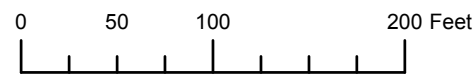


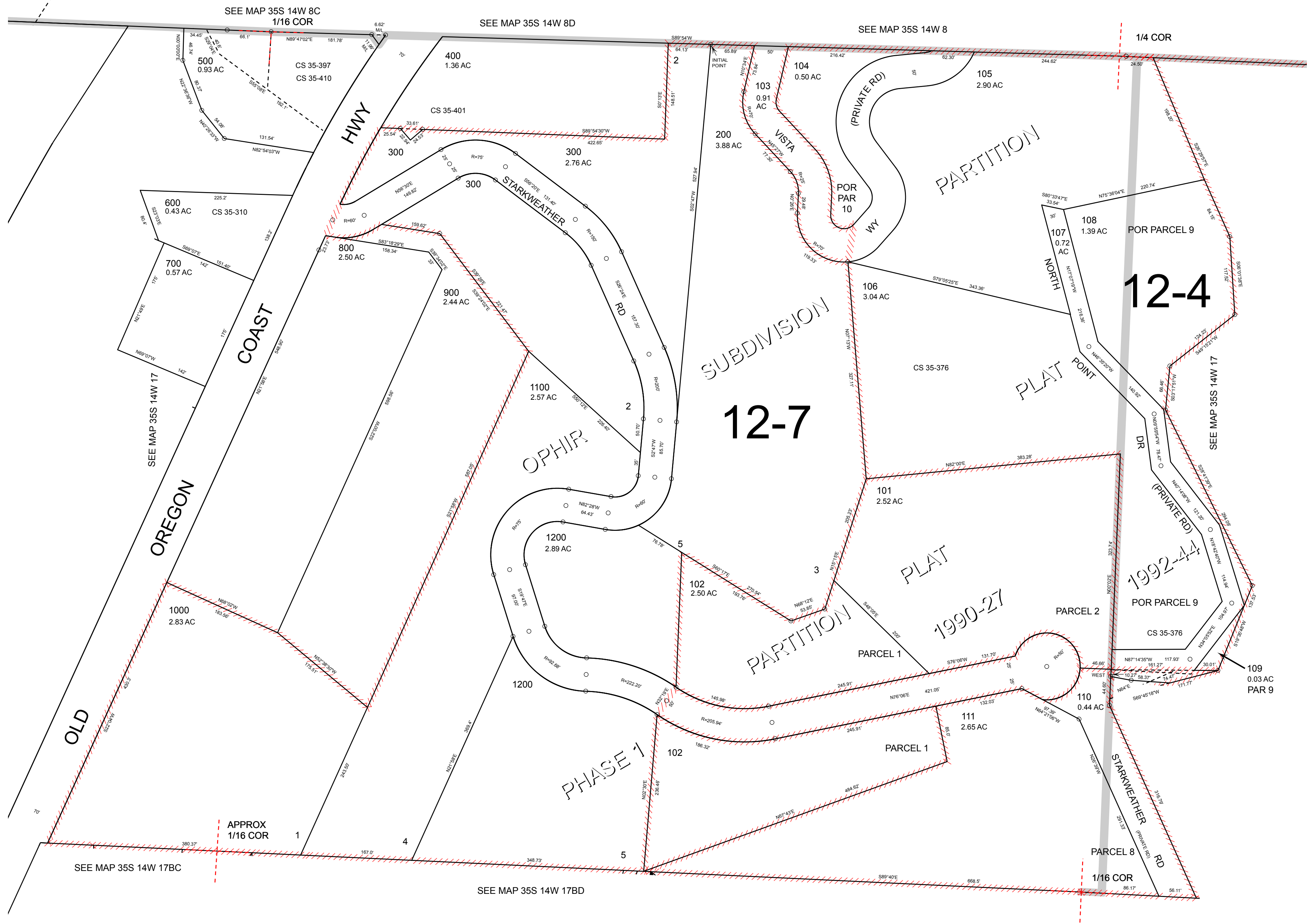
THIS MAP WAS PREPARED FOR ASSESSMENT PURPOSE ONLY



N.E.1/4 N.W.1/4 SEC.17 T.35S. R.14W. W.M. CURRY COUNTY 1" = 100'

35S14W17BA

CANCELLED: 100 1300



APPROX 1/16 COR

Revised: TK 4/26/2012

35S14W17BA

THIS MAP WAS PREPARED FOR ASSESSMENT PURPOSE ONLY

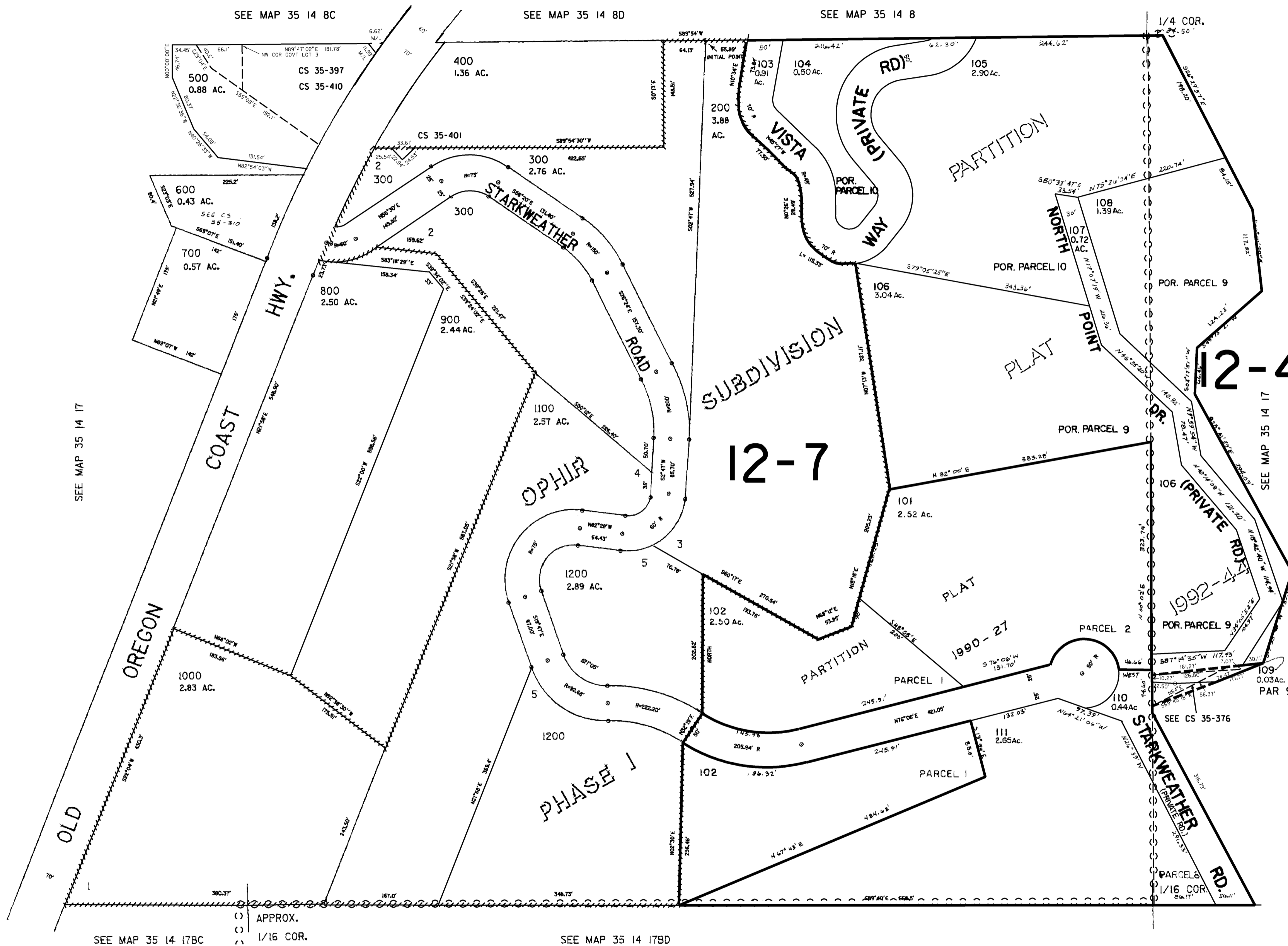
NE1/4 NW1/4 SEC. 17 T.35S. R.14W. W.M. CURRY COUNTY

35 14 17BA



1" = 100'

CANCELLED NO. 100 1300



SEE MAP 35 14 17

SEE MAP 35 14 17BC

SEE MAP 35 14 17BD

SEE MAP 35 14 17

( ) APPROX.  
( ) 1/16 COR.

Revised 11/19/2008, RAA 35 14 17BA

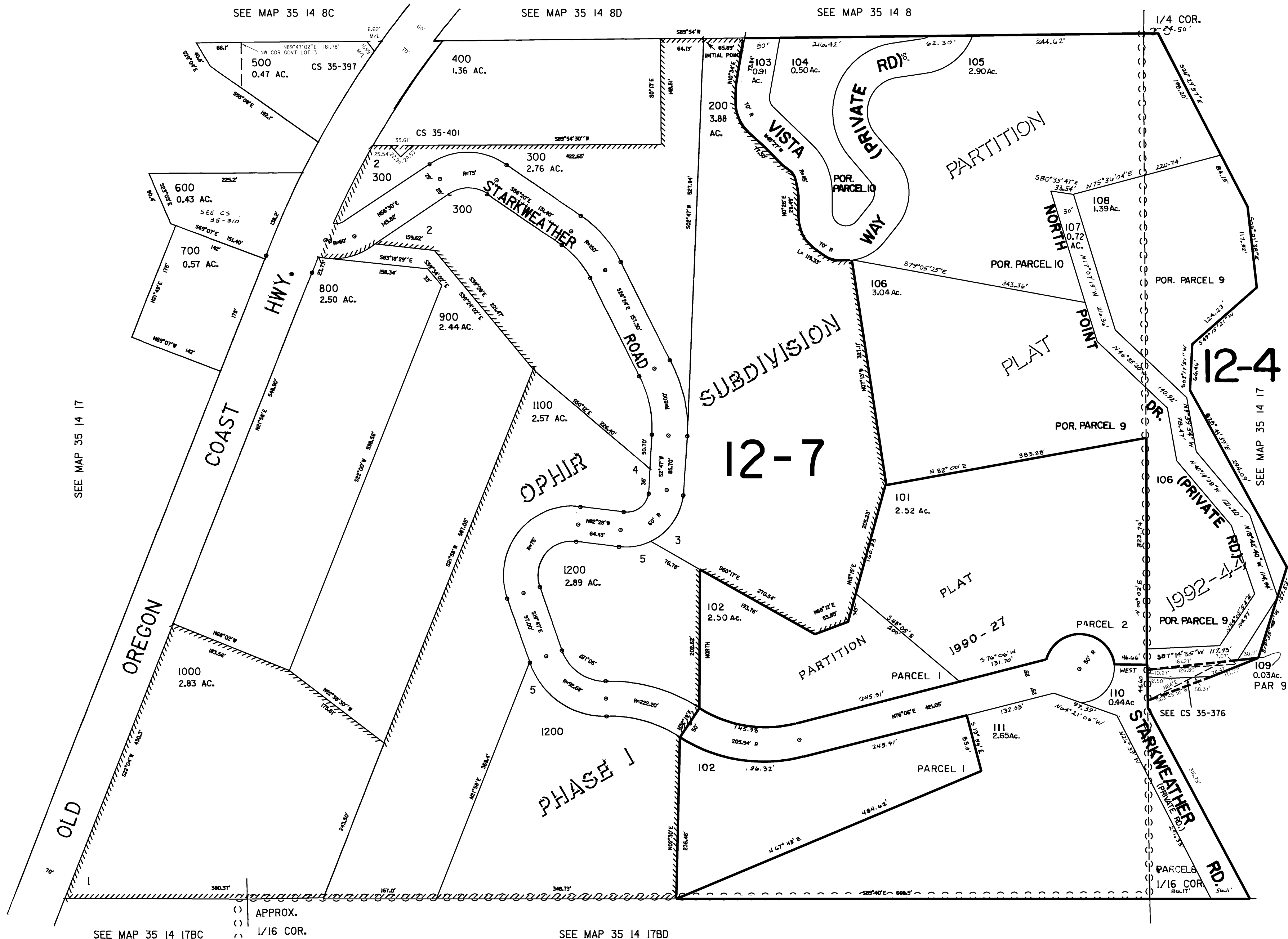
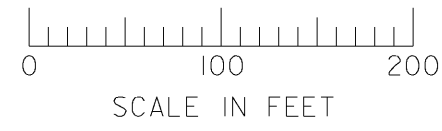
THIS MAP WAS PREPARED FOR  
ASSESSMENT PURPOSE ONLY

NE1/4 NW1/4 SEC. 17 T.35S. R.14W. W.M.  
CURRY COUNTY

35 14 17BA

1" = 100'

CANCELLED NO.  
100  
1300



SEE MAP 35 14 17

SEE MAP 35 14 17

SEE MAP 35 14 17BC

SEE MAP 35 14 17BD

( ) APPROX.  
( ) 1/16 COR.

12-4

12-7

1992-4

109  
0.03Ac.  
PAR 9

Revised  
5/15/02, GE  
35 14 17BA