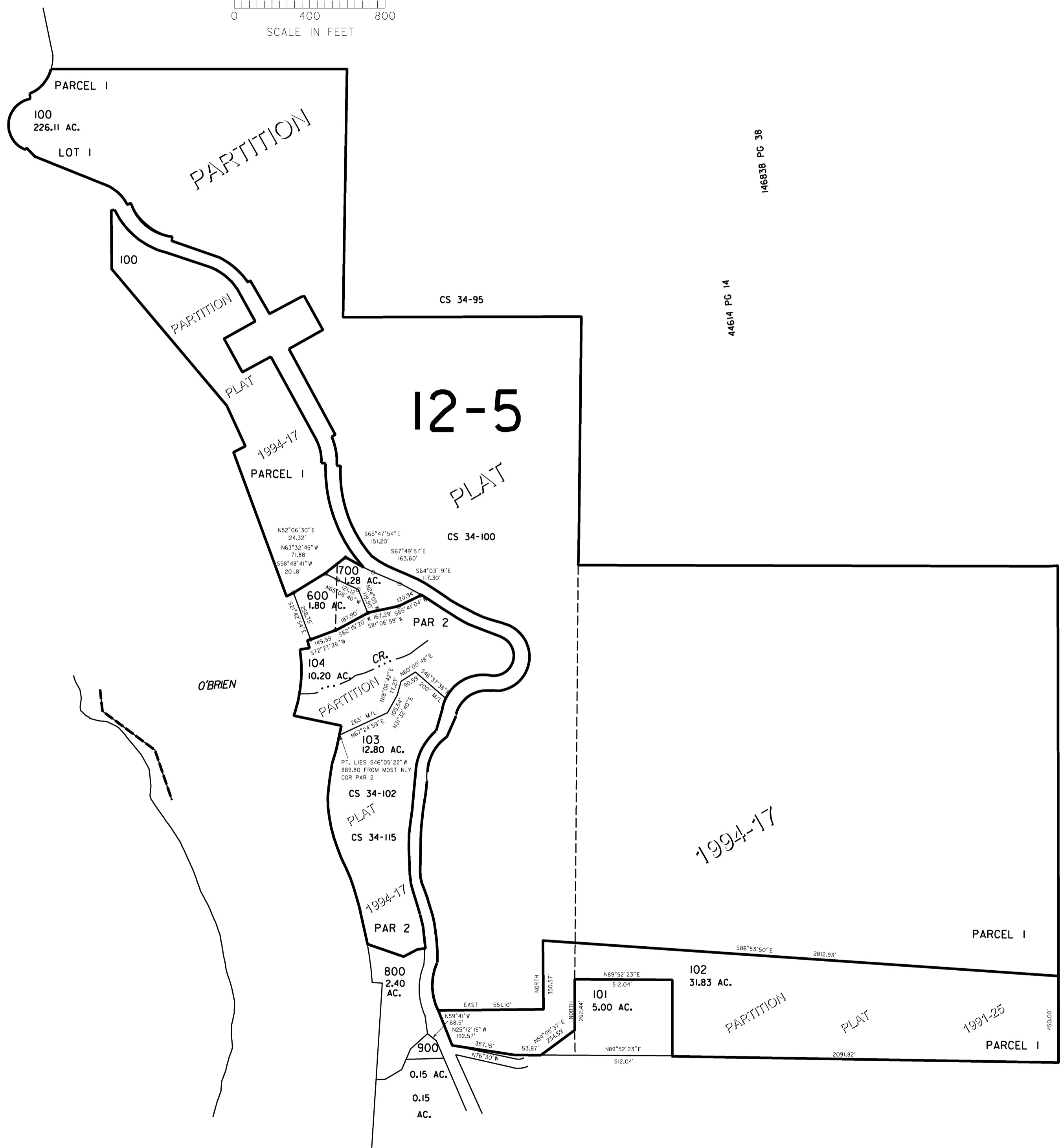


SECTION 32 T.34S. R.14W. W.M.
CURRY COUNTY

THIS MAP WAS PREPARED FOR
ASSESSMENT PURPOSE ONLY

1" = 400'



1. S02°37'E 91.00'
2. S43°48' W 114.95'
3. S24°14' W 117.26'
4. S58°22' W 98.62'
5. S84°34' W 46.12'
6. N03°37'25"E 513.18'
7. S87°50'50"W 47.65'
8. N5°43'55" W 208.63'
9. S69°56'40"E 95.03'
10. S68°46'47"E 86.47'
11. N59°28'49"E 96.49'
12. N86°28'17"E 37.12'
13. S04°30'40"W 83.33'
14. S8°32'49"W 89.75'
15. S7°33'36"E 192.28'
16. S23°40'E 7.86'

Revised
11/3/2008

