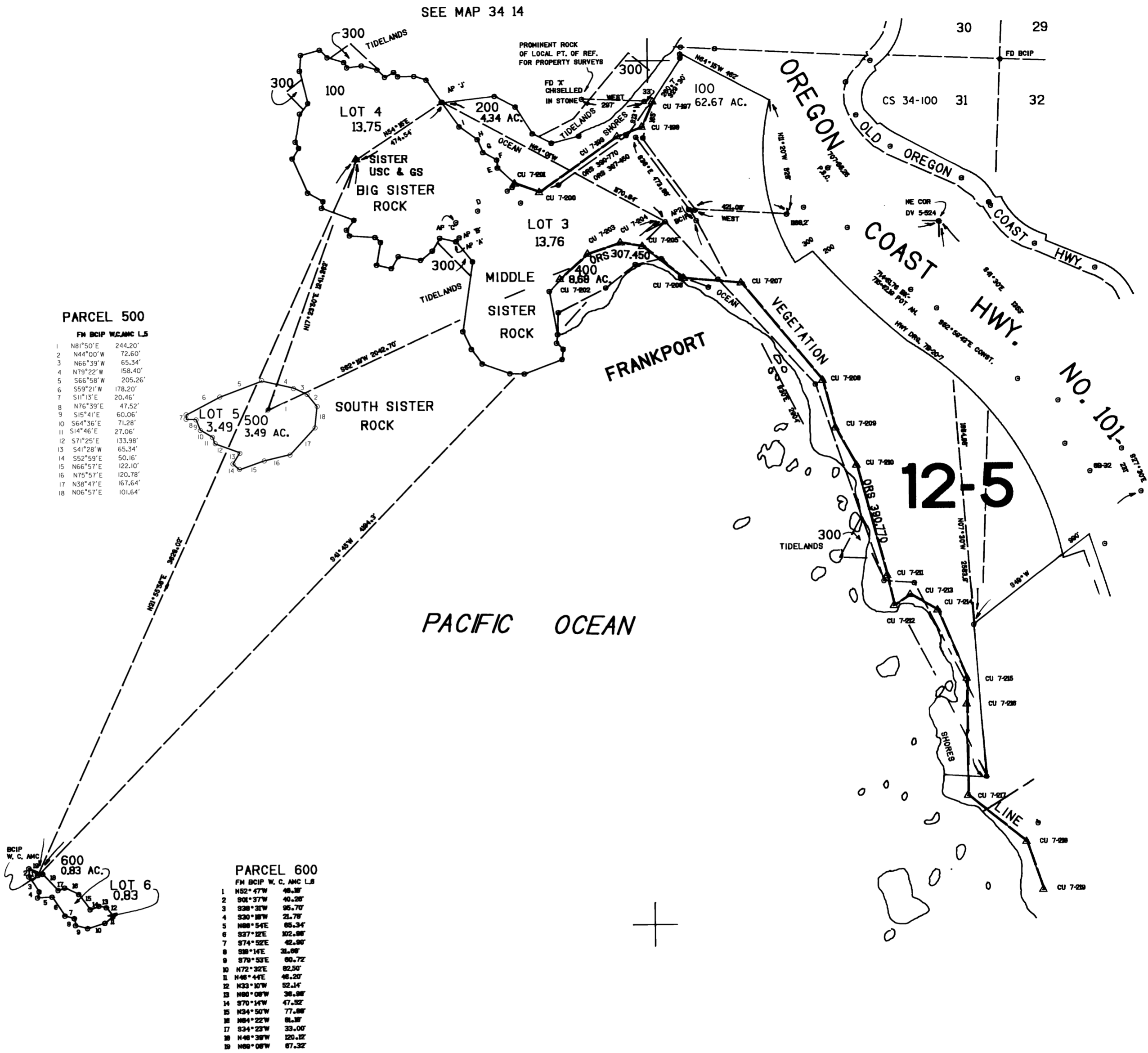
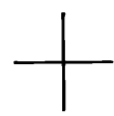


THIS MAP WAS PREPARED FOR
ASSESSMENT PURPOSE ONLY

SECTION 31 T.34S. R.14W. W.M.
CURRY COUNTY

1" = 400'



PARCEL 500

FM BCIP W.C. ANC L.S.

1	N81°50'E	244.20'
2	N44°00'W	72.60'
3	N66°39'W	65.34'
4	N75°22'W	158.40'
5	S66°58'W	205.26'
6	S59°21'W	178.20'
7	S11°13'E	20.46'
8	N76°39'E	47.52'
9	S15°41'E	60.06'
10	S64°36'E	71.28'
11	S14°46'E	27.06'
12	S17°25'E	133.38'
13	S41°28'W	65.34'
14	S52°59'E	50.16'
15	N66°57'E	122.10'
16	N75°57'E	120.78'
17	N38°47'E	167.64'
18	N06°57'E	101.64'

PARCEL 600

FM BCIP W. C. ANC L.S.

1	N52°47'W	48.88'
2	S01°57'W	40.28'
3	S26°31'W	95.70'
4	S30°18'W	21.78'
5	N88°54'E	85.34'
6	S37°12'E	102.88'
7	S74°12'E	82.50'
8	S88°14'E	31.88'
9	S79°53'E	80.72'
10	N72°32'E	82.50'
11	N48°44'E	48.20'
12	N23°10'W	52.14'
13	N80°08'W	38.88'
14	S70°14'W	47.32'
15	N34°50'W	77.88'
16	N84°22'W	81.88'
17	S34°23'W	33.00'
18	N48°38'W	120.12'
19	N88°08'W	87.32'