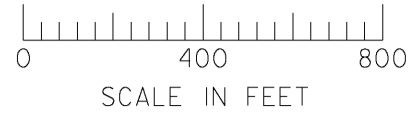


THIS MAP WAS PREPARED FOR
ASSESSMENT PURPOSE ONLY

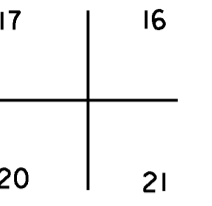
SECTION 20 T.34S. R.14W. W.M.
CURRY COUNTY

34 14 20

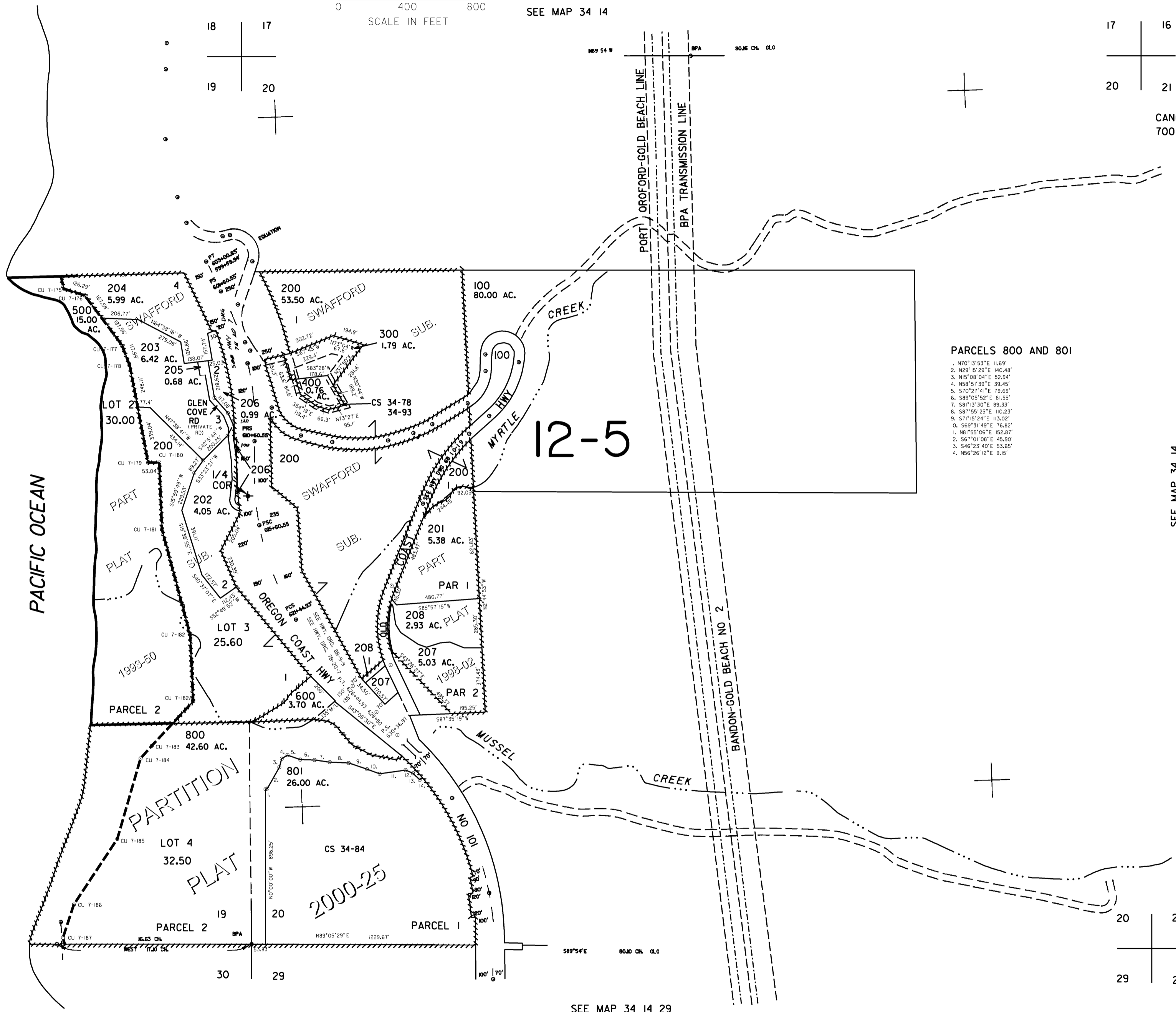


1" = 400'

SEE MAP 34 14



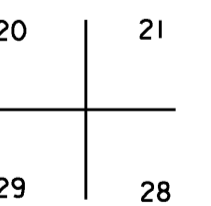
CANCELLED NO.
700



- PARCELS 800 AND 801
1. N70°13'53"E 116.69'
 2. N29°15'29"E 140.48'
 3. N15°08'04"E 52.94'
 4. N58°51'39"E 39.45'
 5. S70°27'41"E 79.69'
 6. S89°05'52"E 81.55'
 7. S81°13'30"E 89.33'
 8. S87°55'25"E 110.23'
 9. S77°15'24"E 113.02'
 10. S69°31'49"E 176.82'
 11. N81°55'06"E 152.87'
 12. S67°01'08"E 45.90'
 13. S46°23'40"E 53.65'
 14. N58°26'12"E 9.15'

SEE MAP 34 14

369 000



SEE MAP 34 14 29

Revised
3/6/2007, RAA
34 14 20

\$TIMES
\$DATES
\$FILES
\$USERNAMES

952 000

THIS MAP WAS PREPARED FOR
ASSESSMENT PURPOSE ONLY

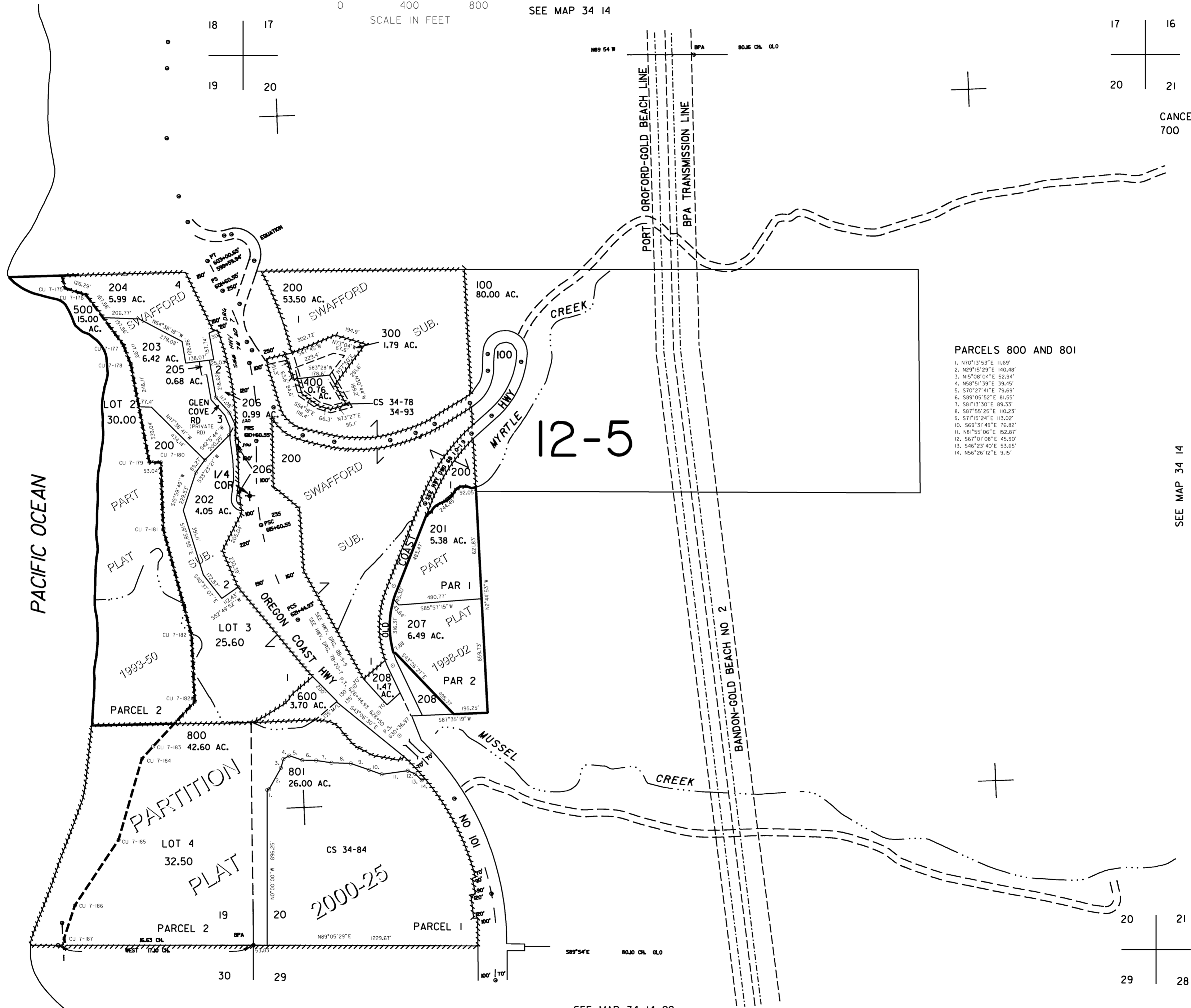
SECTION 20 T.34S. R.14W. W.M.
CURRY COUNTY

34 14 20

1" = 400'



SEE MAP 34 14



PARCELS 800 AND 801

- 1. N70°13'53"E 11.65'
- 2. N29°15'29"E 140.48'
- 3. N15°08'04"E 52.94'
- 4. N58°51'39"E 39.45'
- 5. S70°27'41"E 79.69'
- 6. S89°05'52"E 81.55'
- 7. S81°13'30"E 89.33'
- 8. S87°55'25"E 110.23'
- 9. S71°15'24"E 113.02'
- 10. S69°31'49"E 76.82'
- 11. N81°55'06"E 152.87'
- 12. S67°01'08"E 45.90'
- 13. S46°23'40"E 53.65'
- 14. N56°26'12"E 9.15'

CANCELLED NO.
700

SEE MAP 34 14

369 000

SEE MAP 34 14 29

Revised
3/31/2004, DBJ
34 14 20

952 000