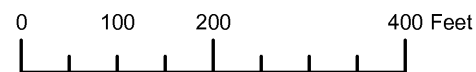


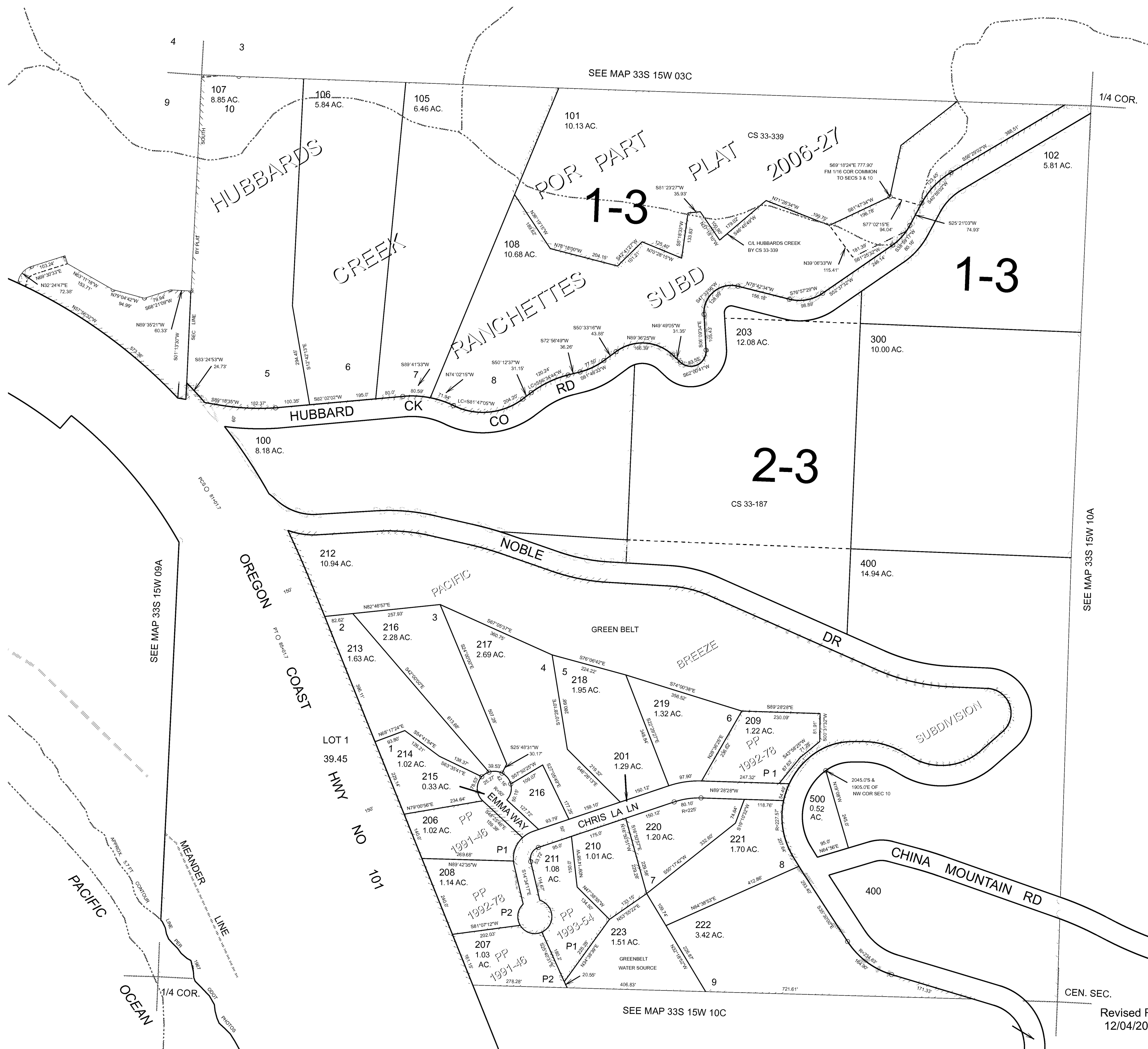
THIS MAP WAS PREPARED FOR ASSESSMENT PURPOSE ONLY



N.W. 1/4 SEC. 10 T.33S. R.15W. W.M. CURRY COUNTY 1" = 200'

33S15W10B

- CANCELLED:
- 103
- 103U1
- 103U2
- 104
- 200
- 202
- 204
- 205



SEE MAP 33S 15W 10A

SEE MAP 33S 15W 09A

SEE MAP 33S 15W 10C

CEN. SEC.

Revised RAA 12/04/2007

33S15W10B

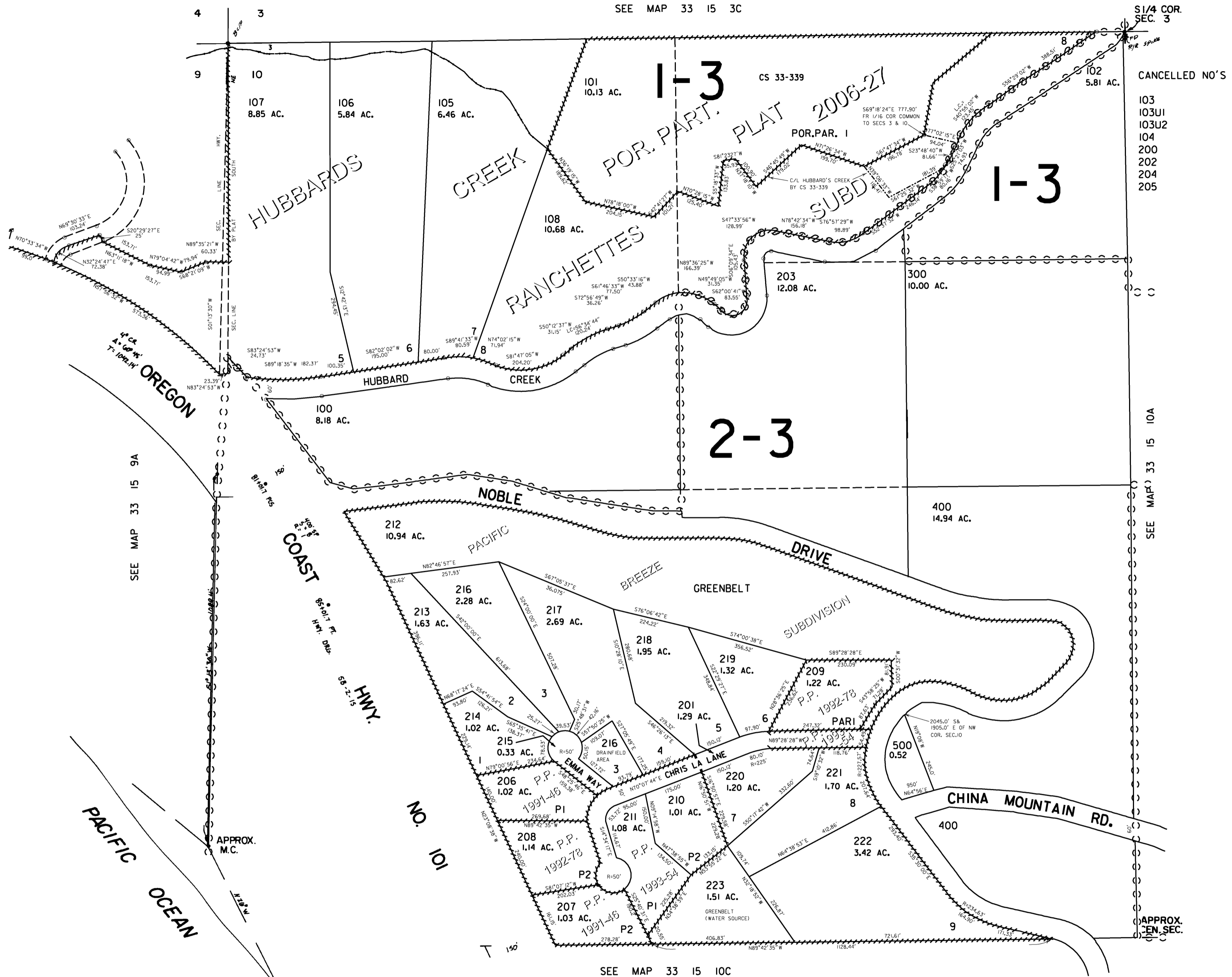
THIS MAP WAS PREPARED FOR
ASSESSMENT PURPOSE ONLY

NW1/4 SEC. 10 T.33S. R.15W. W.M.
CURRY COUNTY

33 15 10B

1" = 200'

SEE MAP 33 15 3C



S1/4 COR.
SEC. 3

CANCELLED NO'S

- 103
- 103U1
- 103U2
- 104
- 200
- 202
- 204
- 205

SEE MAP 33 15 10A

APPROX.
EN. SEC.

SEE MAP 33 15 10C

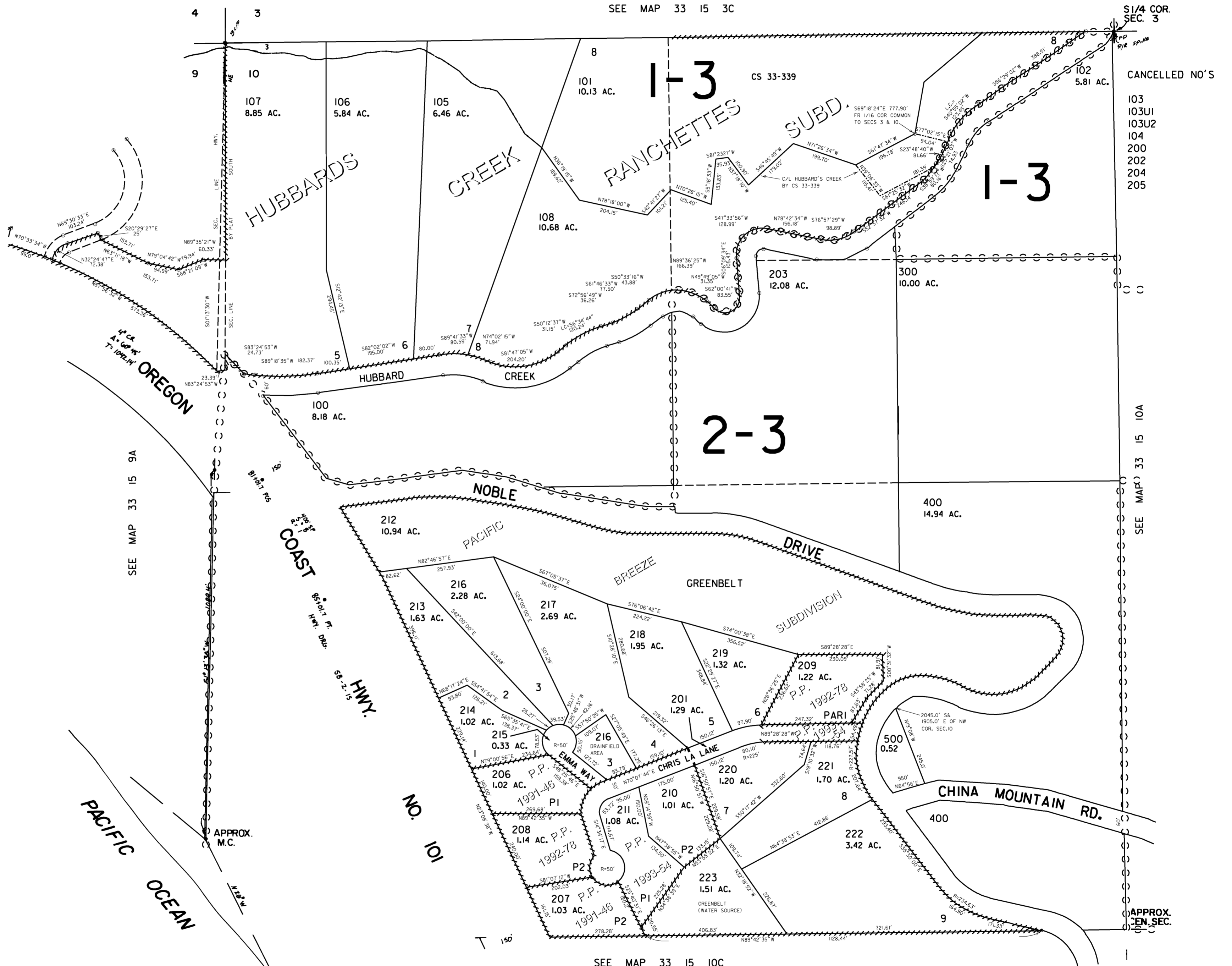
Revised
7/31/2006, RAA
33 15 10B

THIS MAP WAS PREPARED FOR
ASSESSMENT PURPOSE ONLY

NW1/4 SEC. 10 T.33S. R.15W. W.M.
CURRY COUNTY

33 15 10B

1" = 200'



THIS MAP WAS PREPARED FOR ASSESSMENT PURPOSE ONLY

NW1/4 SEC. 10 T.33S. R.15W. W.M. CURRY COUNTY

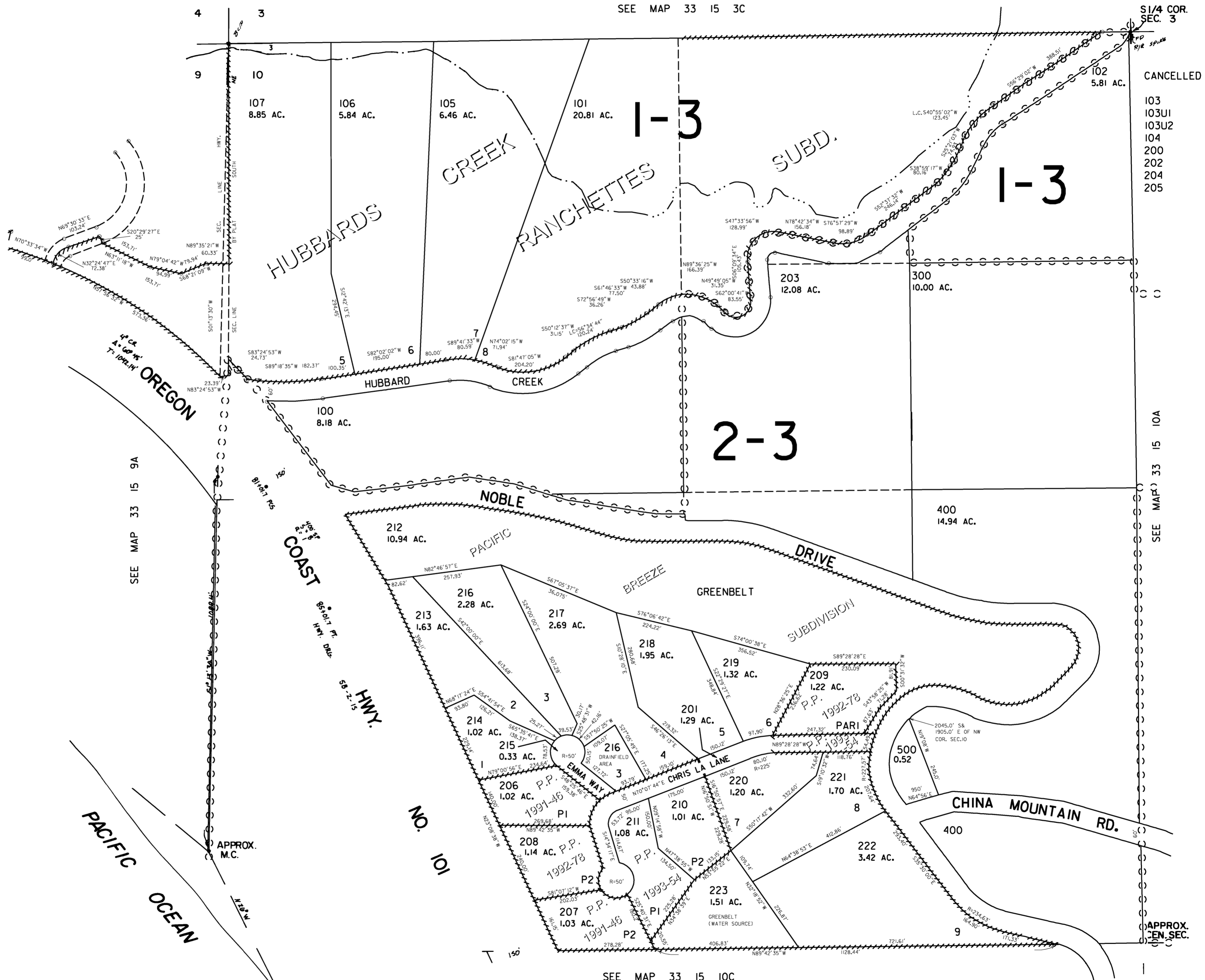
33 15 10B

1" = 200'

SEE MAP 33 15 3C

1/4 COR. SEC. 3

CANCELLED NO'S



SEE MAP 33 15 9A

SEE MAP 33 15 10A

APPROX. TEN SEC.

SEE MAP 33 15 10C

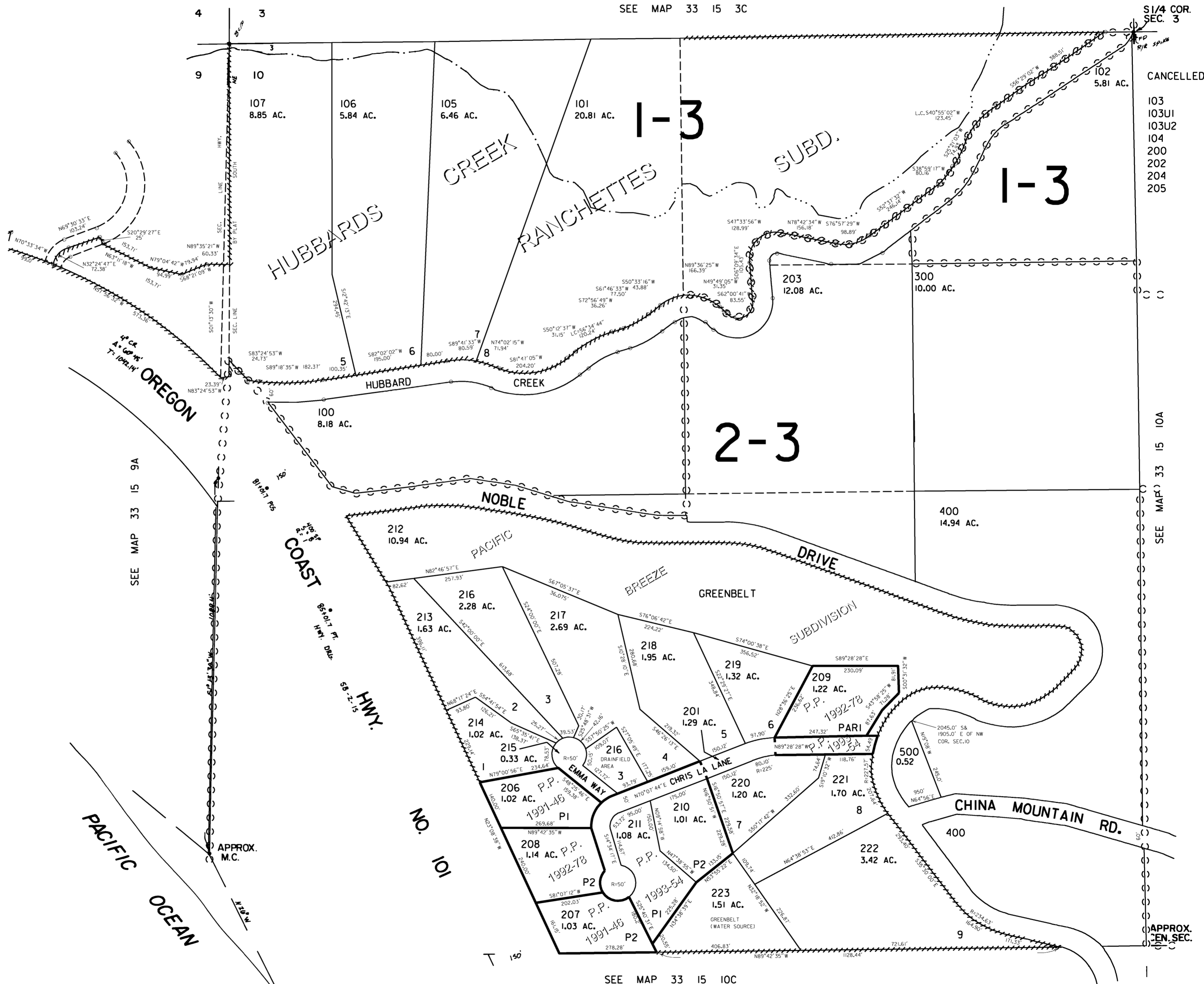
THIS MAP WAS PREPARED FOR
ASSESSMENT PURPOSE ONLY

NW1/4 SEC. 10 T.33S. R.15W. W.M.
CURRY COUNTY

33 15 10B

1" = 200'

SEE MAP 33 15 3C



1/4 COR.
SEC. 3

CANCELLED NO'S

- 103
- 103U1
- 103U2
- 104
- 200
- 202
- 204
- 205

SEE MAP 33 15 10A

APPROX.
TEN SEC.

SEE MAP 33 15 10C