

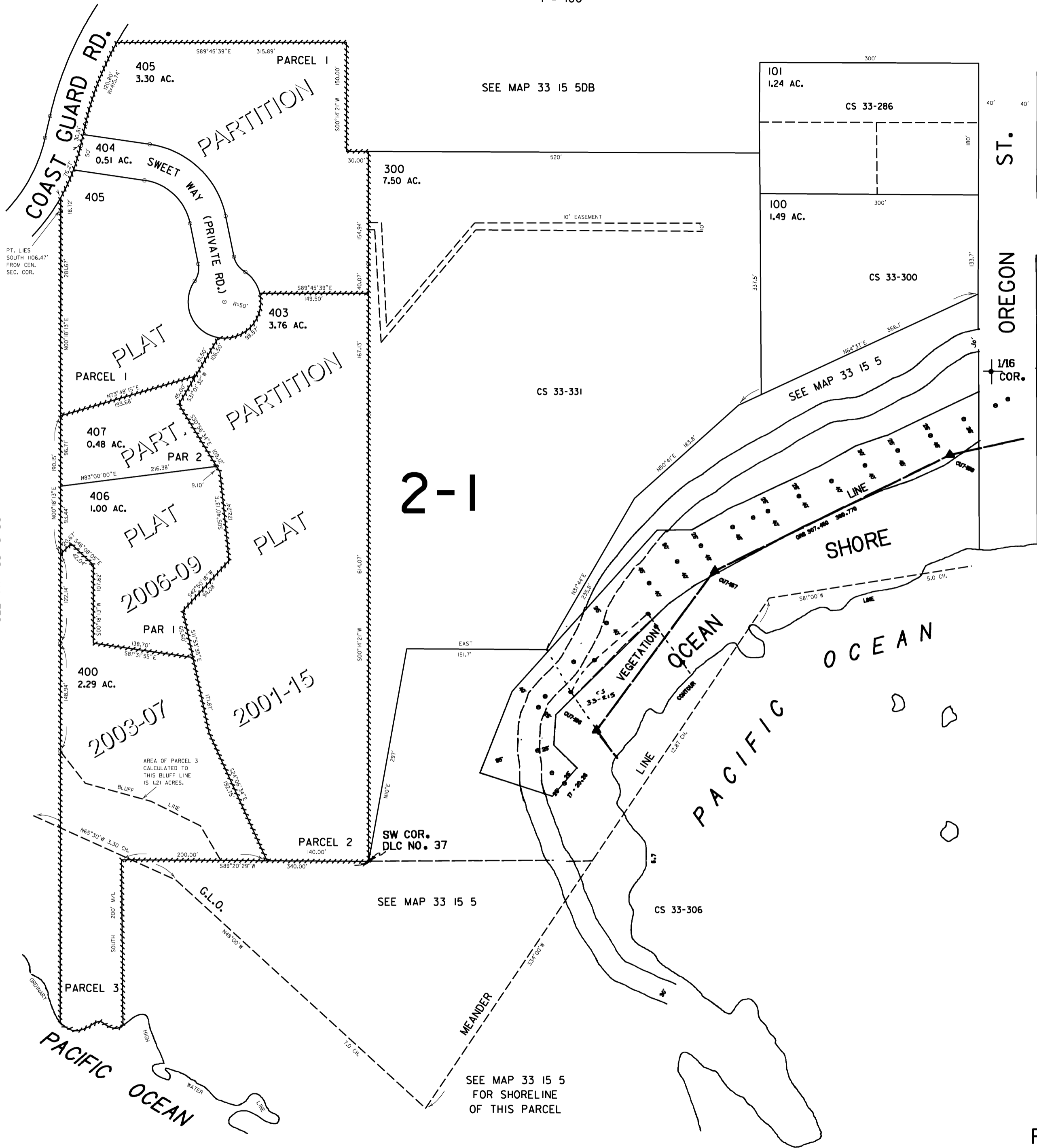
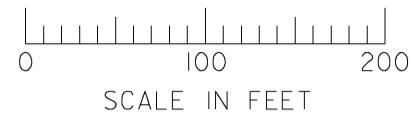


THIS MAP WAS PREPARED FOR  
ASSESSMENT PURPOSE ONLY

SW1/4 SE1/4 SEC. 5 T.33S. R.15W. W.M.  
CURRY COUNTY

33 15 5DC  
PORT ORFORD

1" = 100'



CANCELLED NO.  
200  
401  
402  
500  
500A1 THRU 500A5

SEE MAP 33 15 5DA

SEE MAP 33 15 5C

SEE MAP 33 15 5

SEE MAP 33 15 5  
FOR SHORELINE  
OF THIS PARCEL

Revised  
7/18/2006 RAA  
33 15 5DC  
PORT ORFORD

