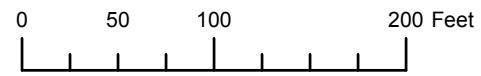


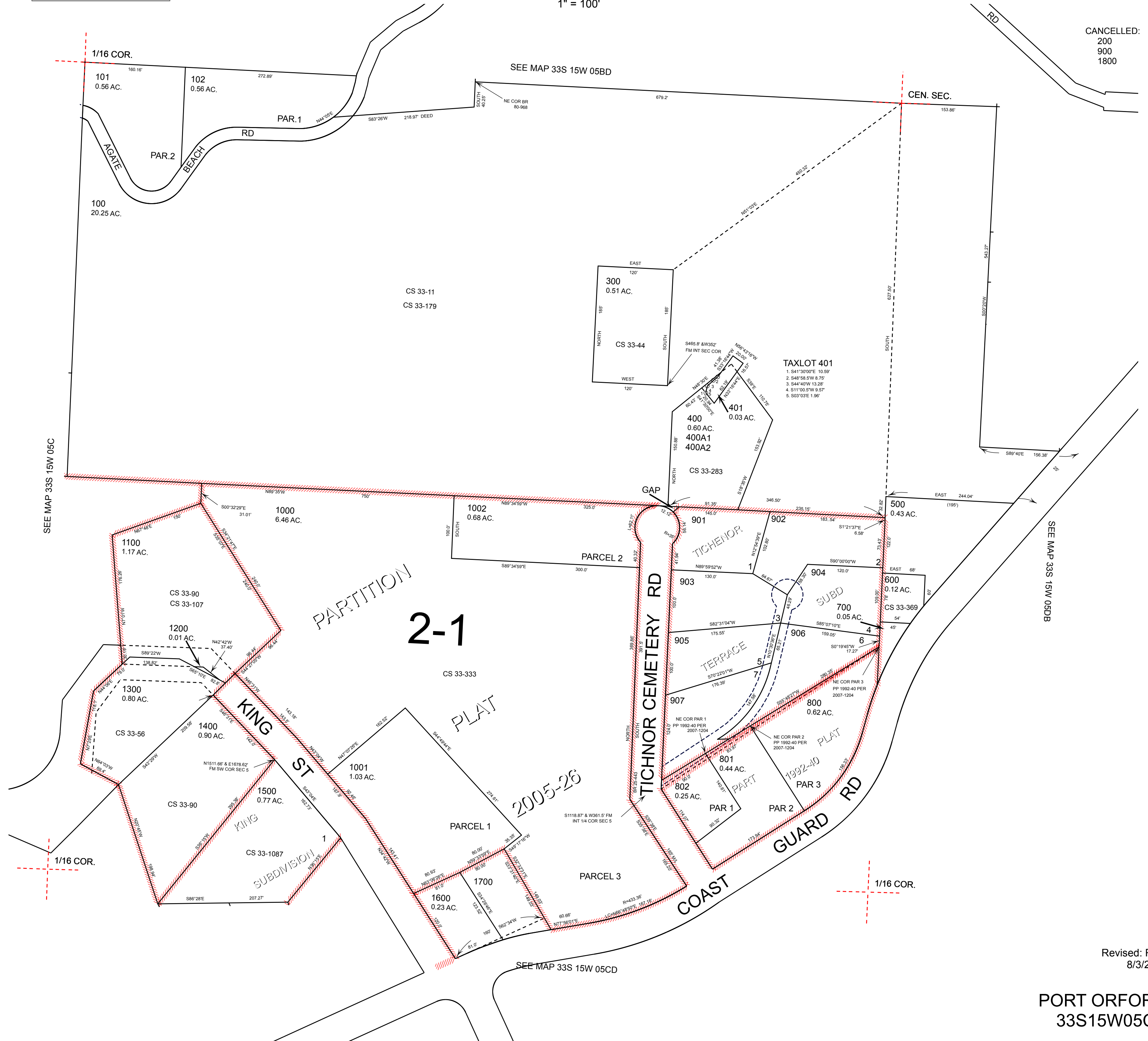
THIS MAP WAS PREPARED FOR ASSESSMENT PURPOSE ONLY



N.E.1/4 S.W.1/4 SEC.5 T.33S. R.15W. W.M. CURRY COUNTY
1" = 100'

33S15W05CA
PORT ORFORD

CANCELLED:
200
900
1800



2005-26

SEE MAP 33S 15W 05DB

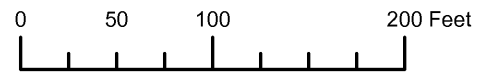
SEE MAP 33S 15W 05C

SEE MAP 33S 15W 05CD

Revised: RAA
8/3/2011

PORT ORFORD
33S15W05CA

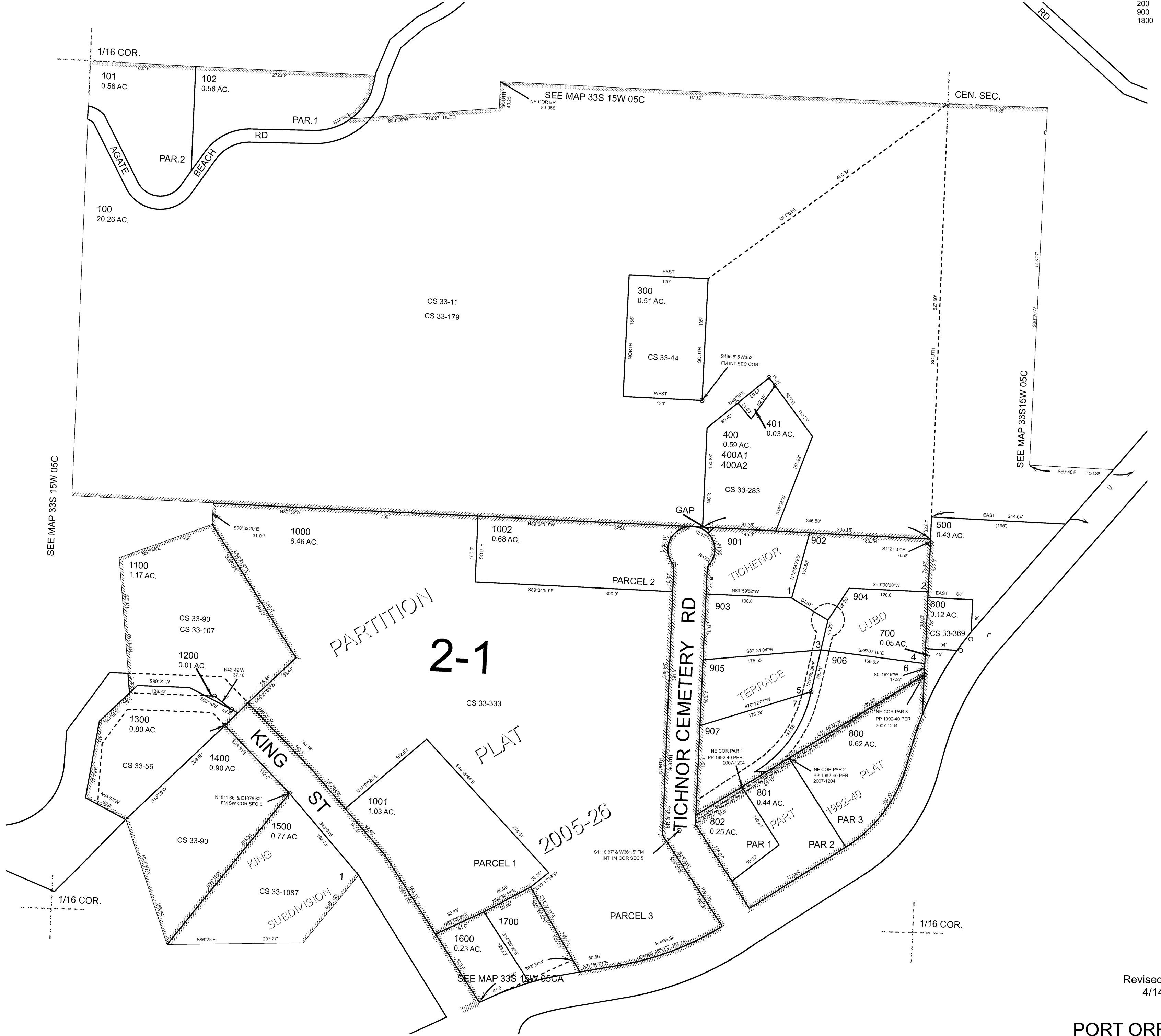
THIS MAP WAS PREPARED FOR ASSESSMENT PURPOSE ONLY



N.E. 1/4 S.W. 1/4 SEC. 5 T. 33S. R. 15W. W.M. CURRY COUNTY
1" = 100'

33S15W05CA
PORT ORFORD

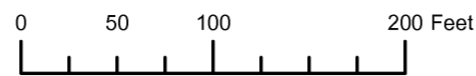
CANCELLED:
200
900
1800



Revised: RAA
4/14/2009

PORT ORFORD
33S15W05CA

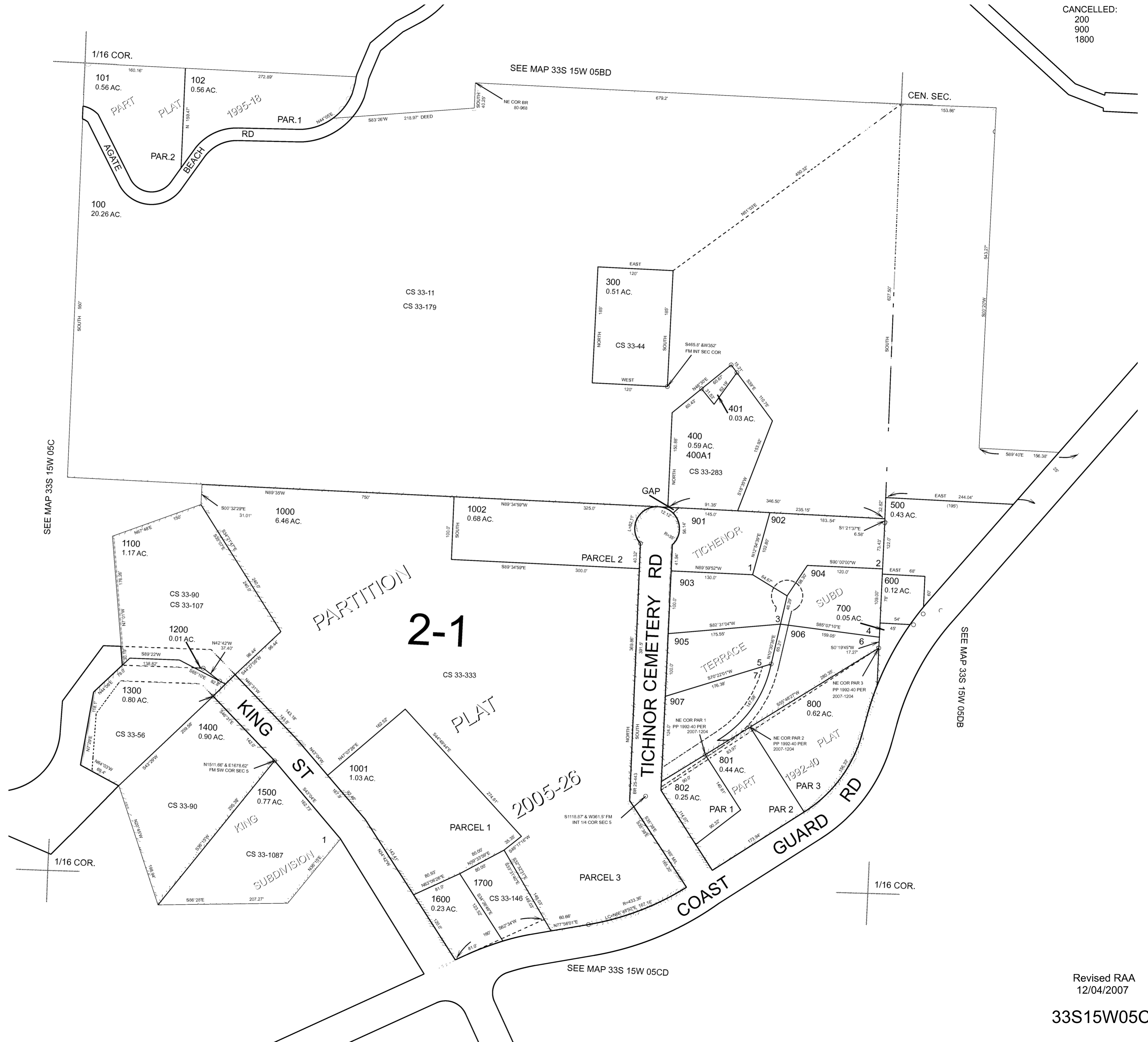
THIS MAP WAS PREPARED FOR ASSESSMENT PURPOSE ONLY



N.E. 1/4 S.W. 1/4 SEC. 5 T. 33S. R. 15W. W.M. CURRY COUNTY 1" = 100'

33S15W05CA

CANCELLED:
200
900
1800



Revised RAA
12/04/2007

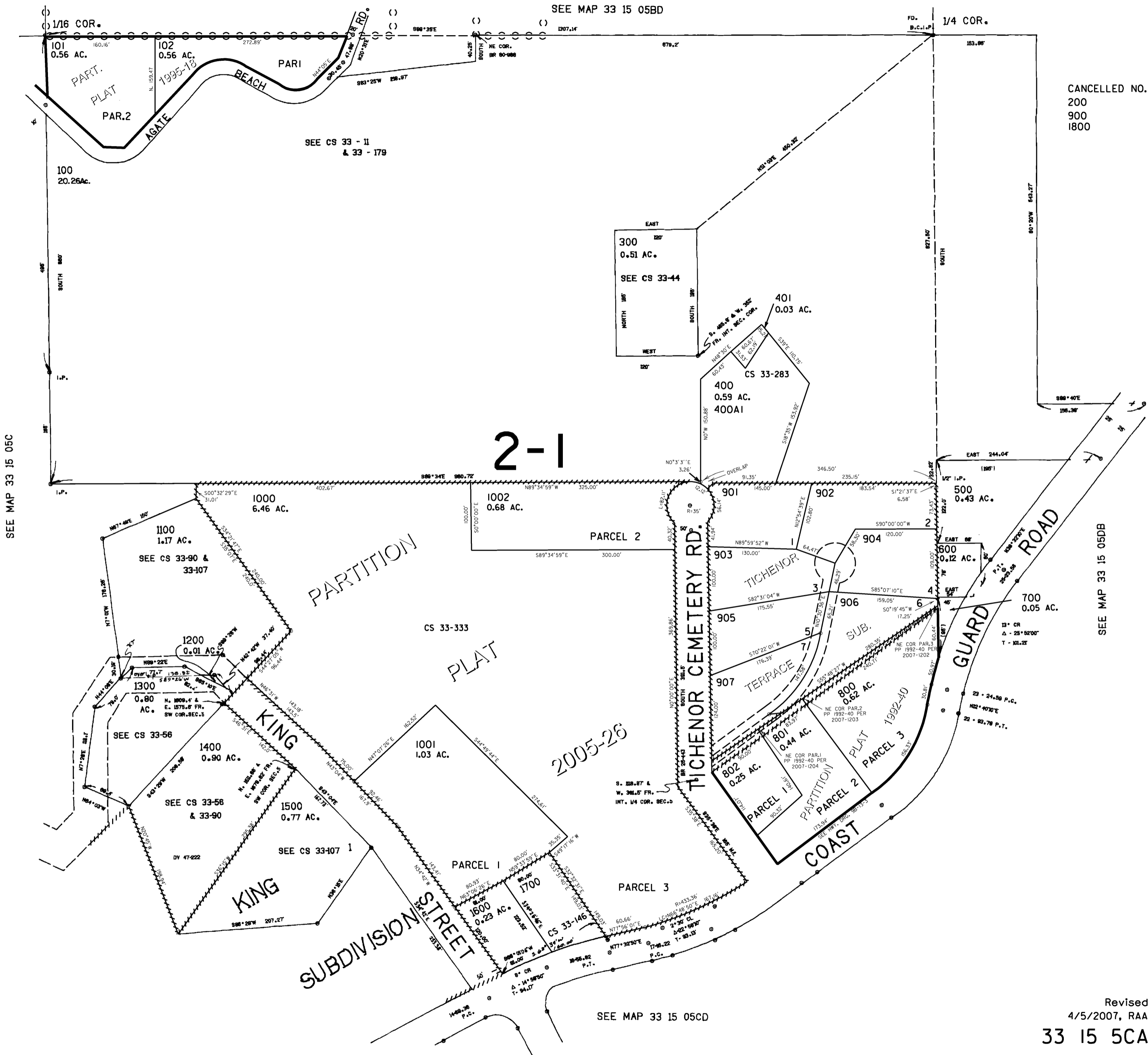
33S15W05CA

THIS MAP WAS PREPARED FOR
ASSESSMENT PURPOSE ONLY

NE1/4 SW1/4 SEC. 5 T.33S. R.15W. W.M.
CURRY COUNTY

33 15 5CA

1" = 100'



SEE MAP 33 15 05C

SEE MAP 33 15 05DB

SEE MAP 33 15 05CD

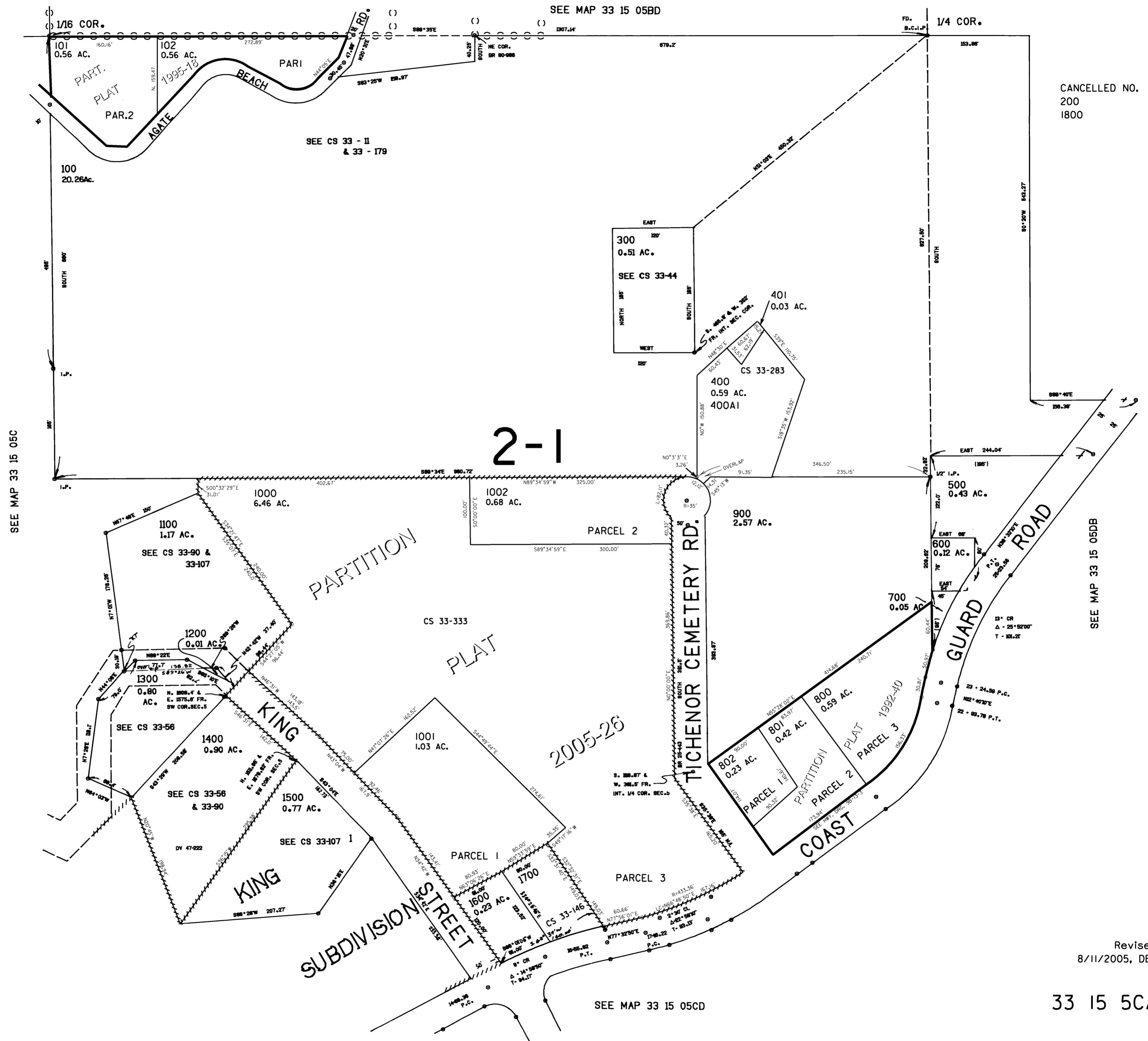
Revised
4/5/2007, RAA
33 15 5CA

THIS MAP WAS PREPARED FOR
ASSESSMENT PURPOSE ONLY

NE1/4 SW1/4 SEC. 5 T.33S. R.15W. W.M.
CURRY COUNTY

33 15 5CA

1" = 100'



33 15 5CA