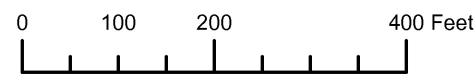


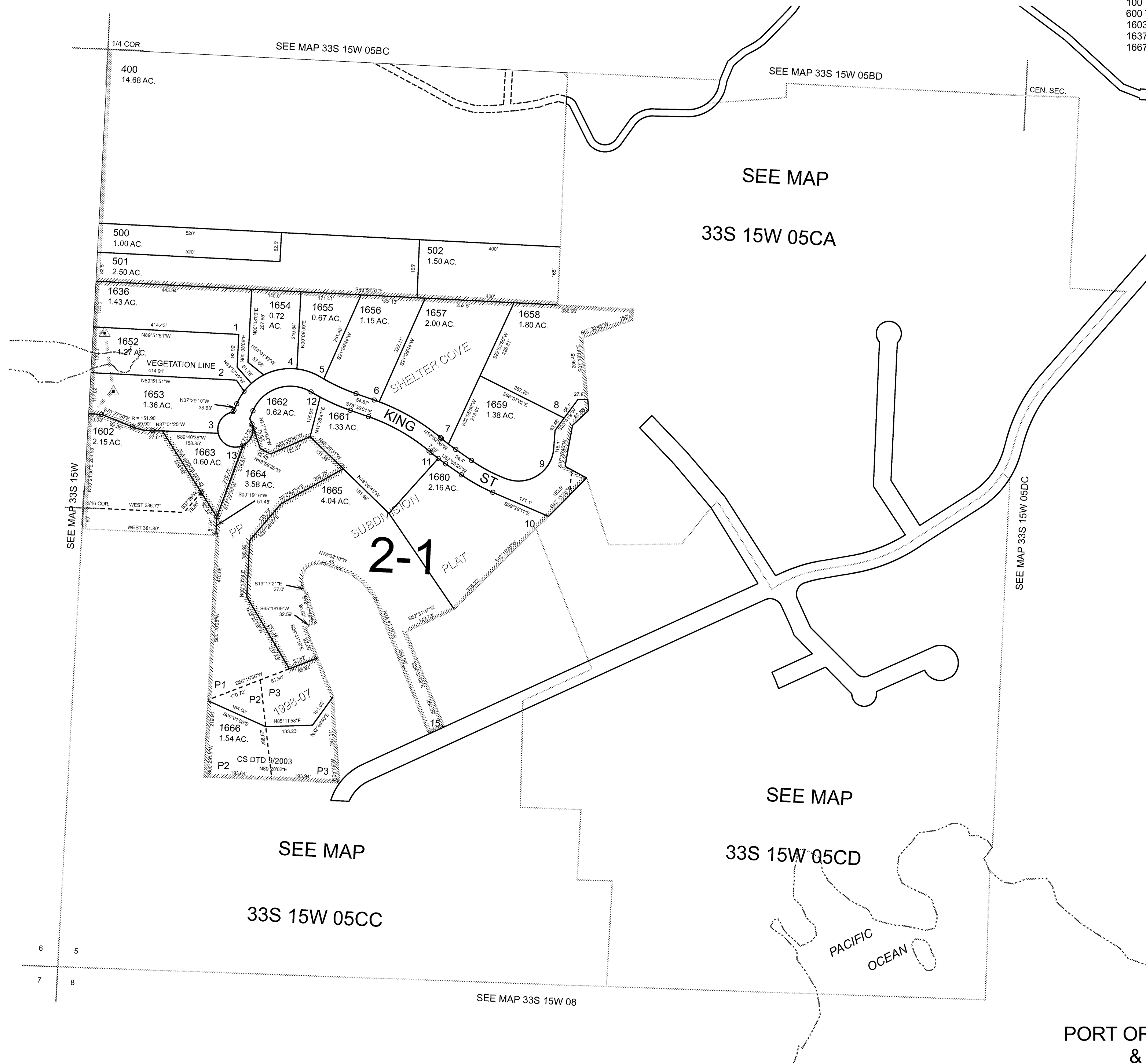
THIS MAP WAS PREPARED FOR ASSESSMENT PURPOSE ONLY



S.W.1/4 SEC.5 T.33S. R.15W. W.M.
CURRY COUNTY
1" = 200'

33S15W05C
& INDEX
PORT ORFORD

CANCELLED:
100 THRU 300
600 THRU 1601
1603 THRU 1635
1637 THRU 1651
1667



6 5
7 8

SEE MAP 33S 15W 08

SEE MAP

33S 15W 05CD

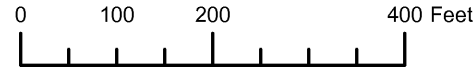
SEE MAP

33S 15W 05CC

PACIFIC OCEAN

Revised MRT
8/27/2008

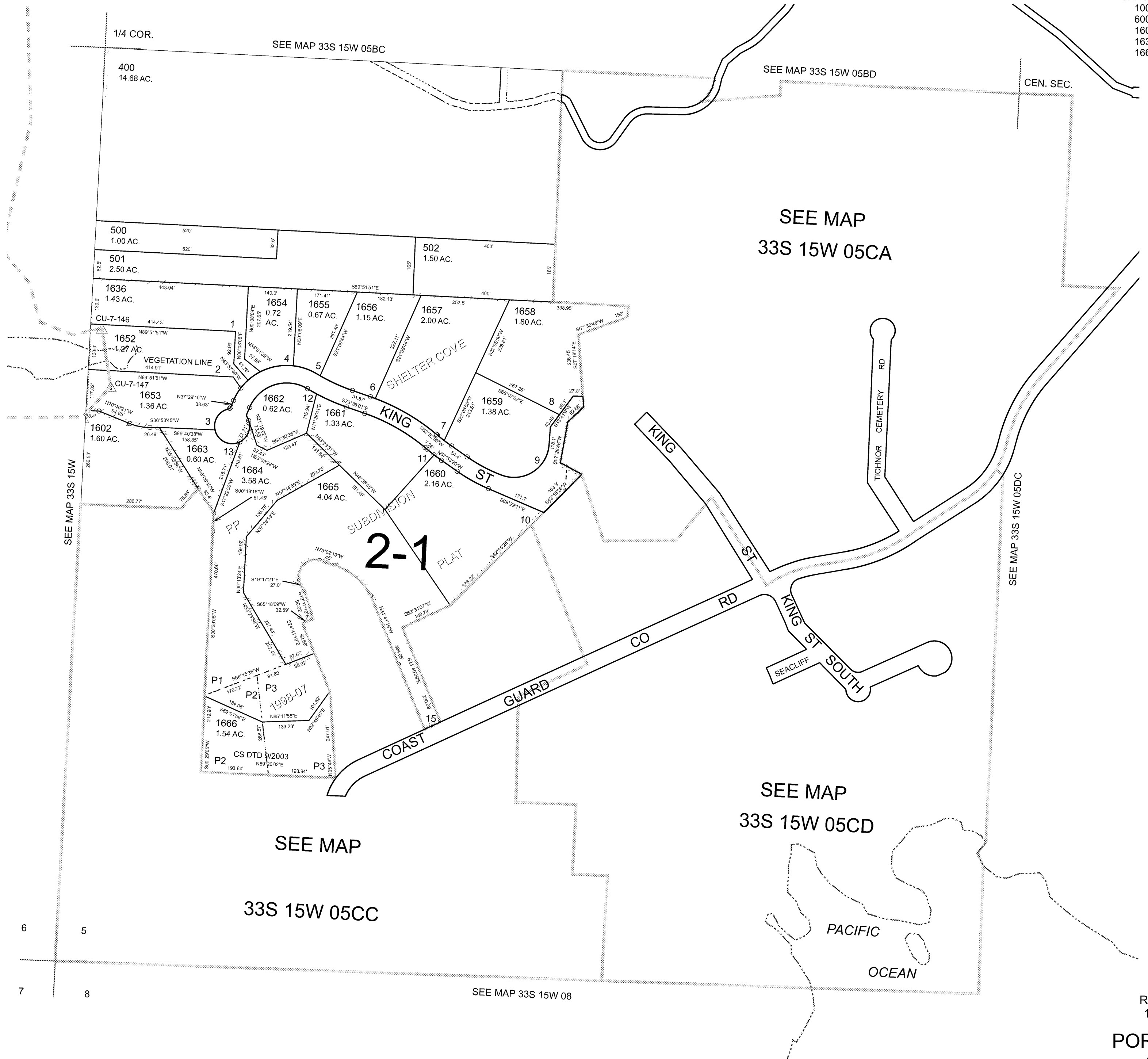
THIS MAP WAS PREPARED FOR ASSESSMENT PURPOSE ONLY



S.W.1/4 SEC.5 T.33S. R.15W. W.M.
CURRY COUNTY
1" = 200'

33S15W05C
& INDEX
PORT ORFORD

CANCELLED:
100 THRU 300
600 THRU 1601
1603 THRU 1635
1637 THRU 1651
1667



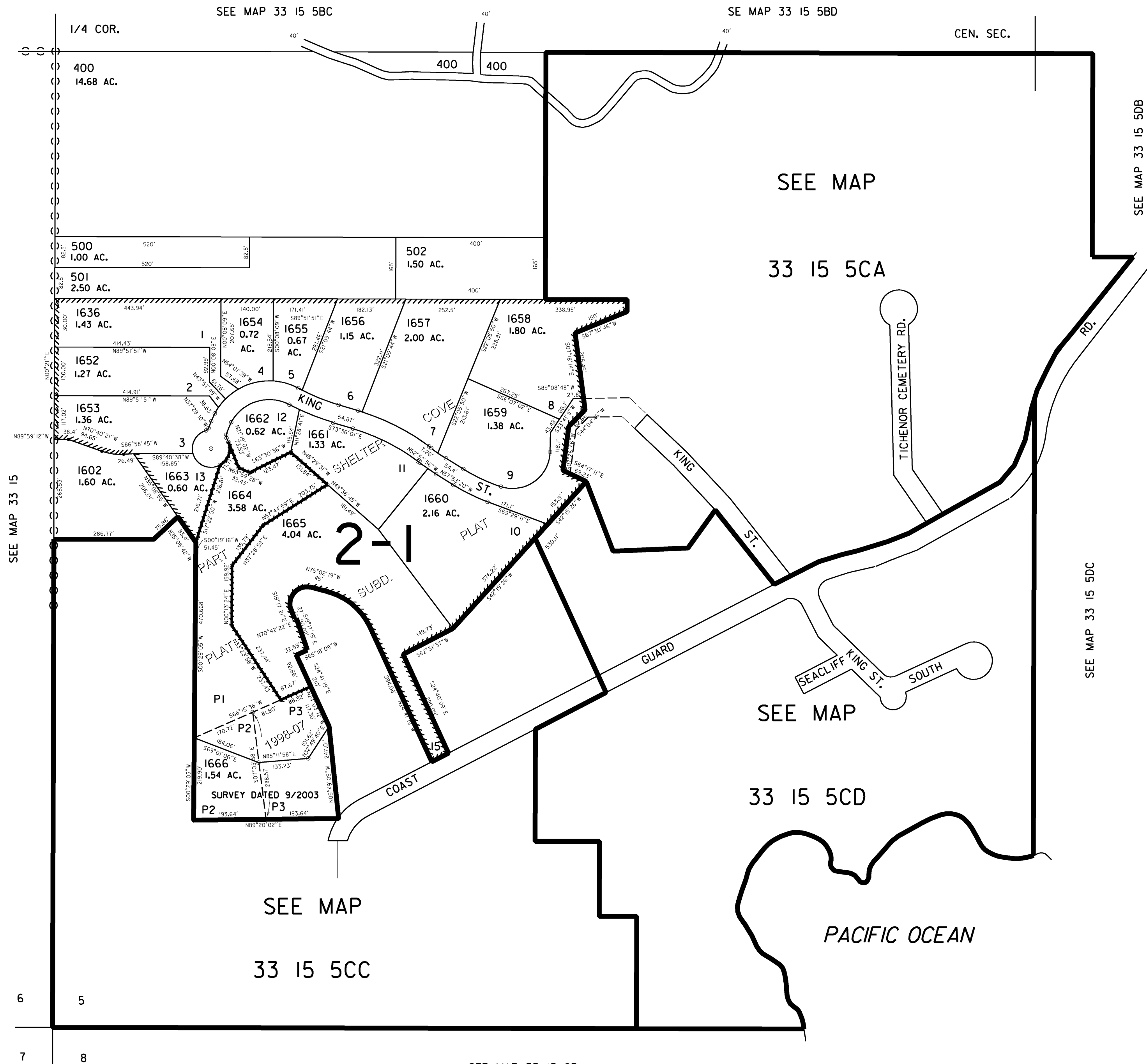
6 5
7 8

THIS MAP WAS PREPARED FOR
ASSESSMENT PURPOSE ONLY

SW1/4 SEC. 5 T.33S. R.15W. W.M
CURRY COUNTY

1" = 200'

33 15 5C
& INDEX
PORT ORFORD



CANCELLED NO.S
100 THRU 300
600 THRU 1601
1603 THRU 1635
1637 THRU 1651
1667

SEE MAP 33 15 5DB

SEE MAP 33 15 5DC

SEE MAP 33 15 8B

33 15 5C
& INDEX
PORT ORFORD
Revised
1/14/2004, DBJ