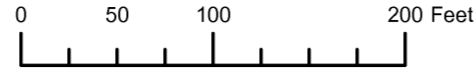


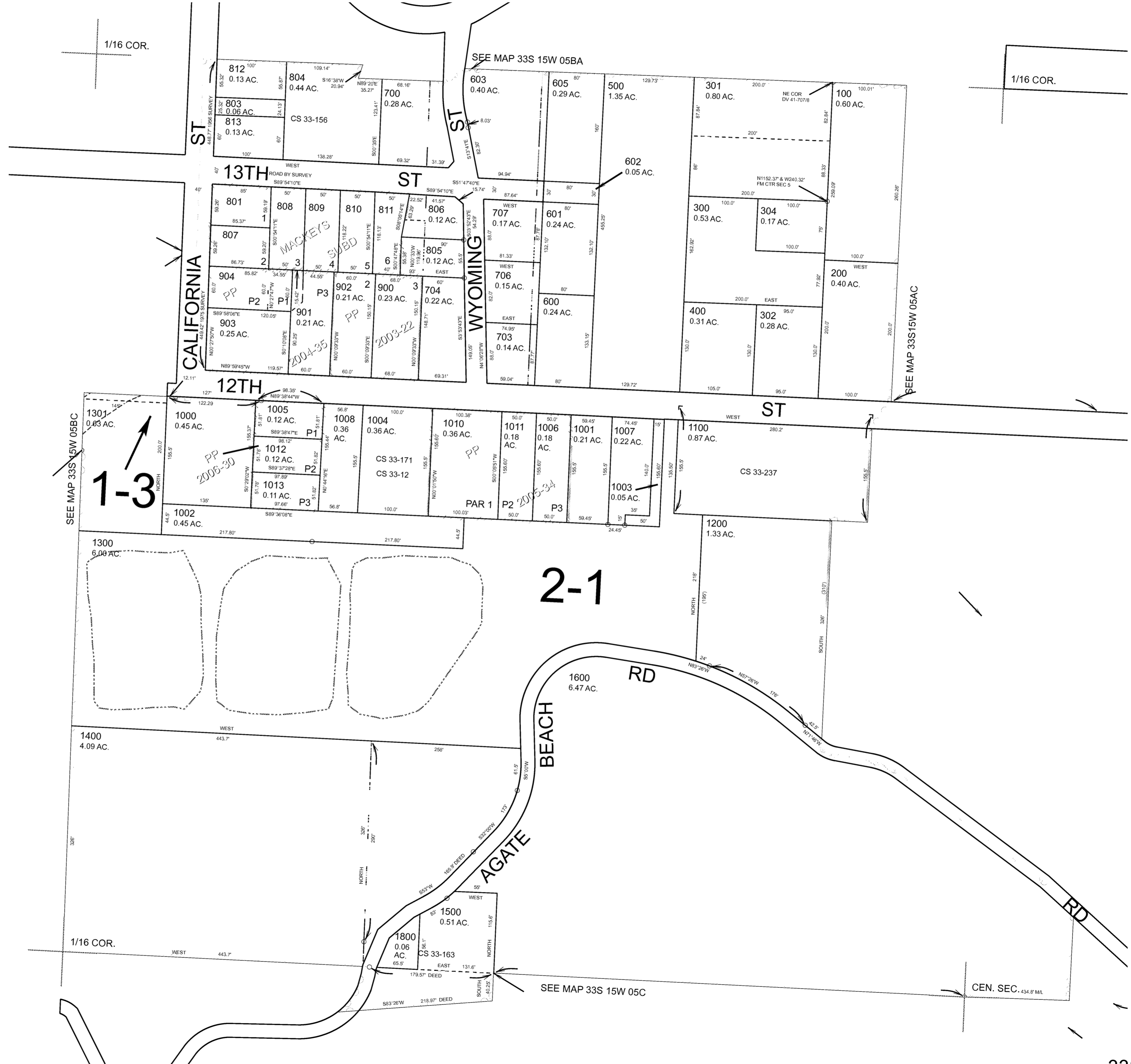
THIS MAP WAS PREPARED FOR ASSESSMENT PURPOSE ONLY



S.E.1/4 N.W.1/4 SEC.5 T.33S. R.15W. W.M. CURRY COUNTY 1" = 100'

33S15W05BD

- CANCELLED:
- 303
- 604
- 701
- 702
- 705
- 800
- 802
- 1001U1
- 1001U2
- 1009
- 1700



Revised RAA 12/04/2007

33S15W05BD

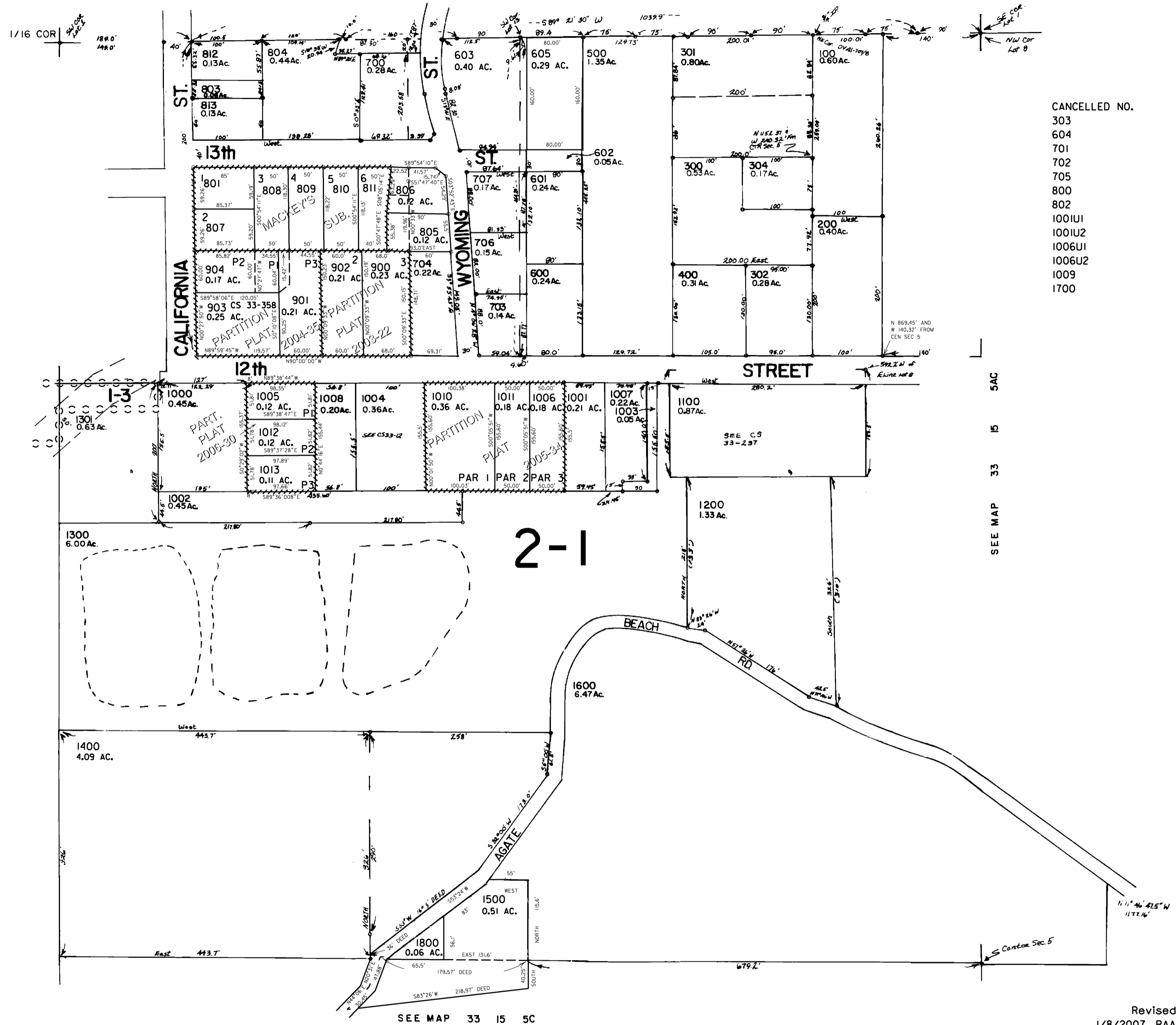
THIS MAP WAS PREPARED FOR
ASSESSMENT PURPOSE ONLY

SE1/4 NW1/4 SEC. 5 T.33S. R.15W. W.M.
CURRY COUNTY

33 15 5 BD

1" = 100'

SEE MAP 33 15 5BA



CANCELLED NO.

- 303
- 604
- 701
- 702
- 705
- 800
- 802
- 1001U1
- 1001U2
- 1006U1
- 1006U2
- 1009
- 1700

SEE MAP 33 15 5BC

SEE MAP 33 15 5A

SEE MAP 33 15 5C

Revised
1/8/2007, RAA
33 15 5 BD

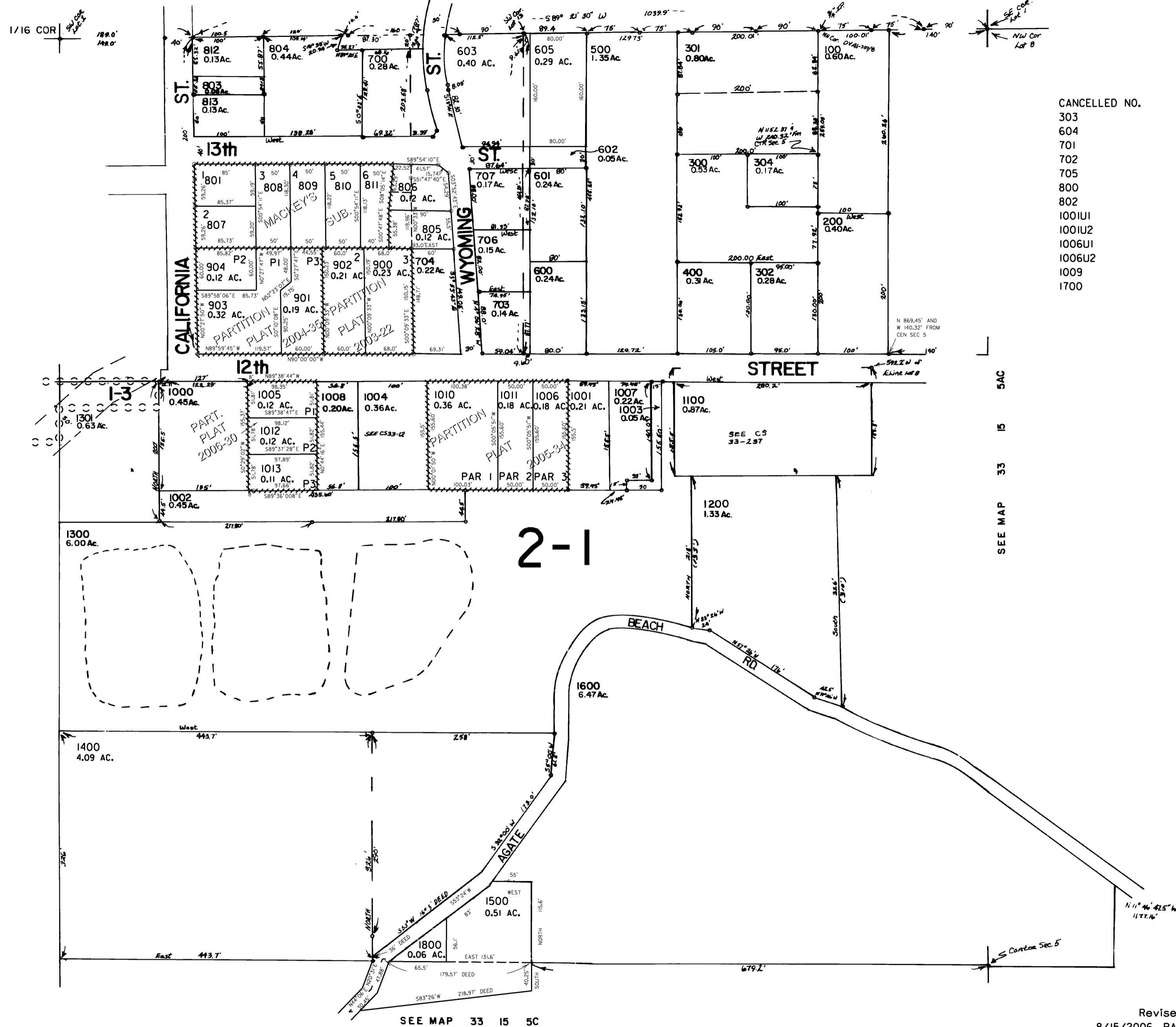
THIS MAP WAS PREPARED FOR
ASSESSMENT PURPOSE ONLY

SE1/4 NW1/4 SEC. 5 T.33S. R.15W. W.M.
CURRY COUNTY

33 15 5 BD

1" = 100'

SEE MAP 33 15 5BA



- CANCELLED NO.
- 303
 - 604
 - 701
 - 702
 - 705
 - 800
 - 802
 - 100IU1
 - 100IU2
 - 1006U1
 - 1006U2
 - 1009
 - 1700

SEE MAP 33 15 5BC

SEE MAP 33 15 5AC

SEE MAP 33 15 5C

Revised
8/15/2006, RAA
33 15 5 BD

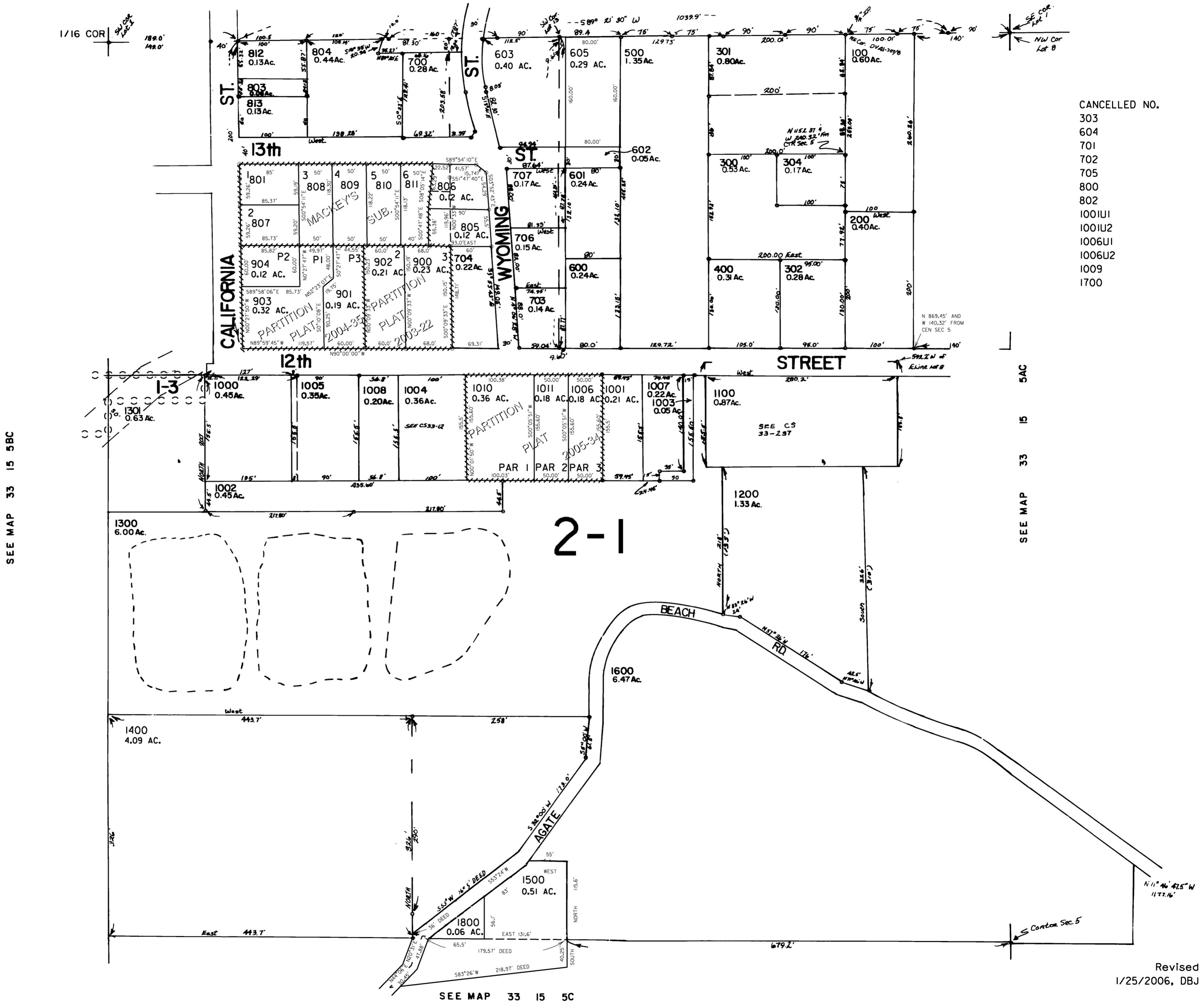
THIS MAP WAS PREPARED FOR ASSESSMENT PURPOSE ONLY

SE1/4 NW1/4 SEC. 5 T.33S. R.15W. W.M. CURRY COUNTY

33 15 5 BD

1" = 100'

SEE MAP 33 15 5BA



- CANCELLED NO.
- 303
 - 604
 - 701
 - 702
 - 705
 - 800
 - 802
 - 1001U1
 - 1001U2
 - 1006U1
 - 1006U2
 - 1009
 - 1700

Revised 1/25/2006, DBJ

33 15 5 BD

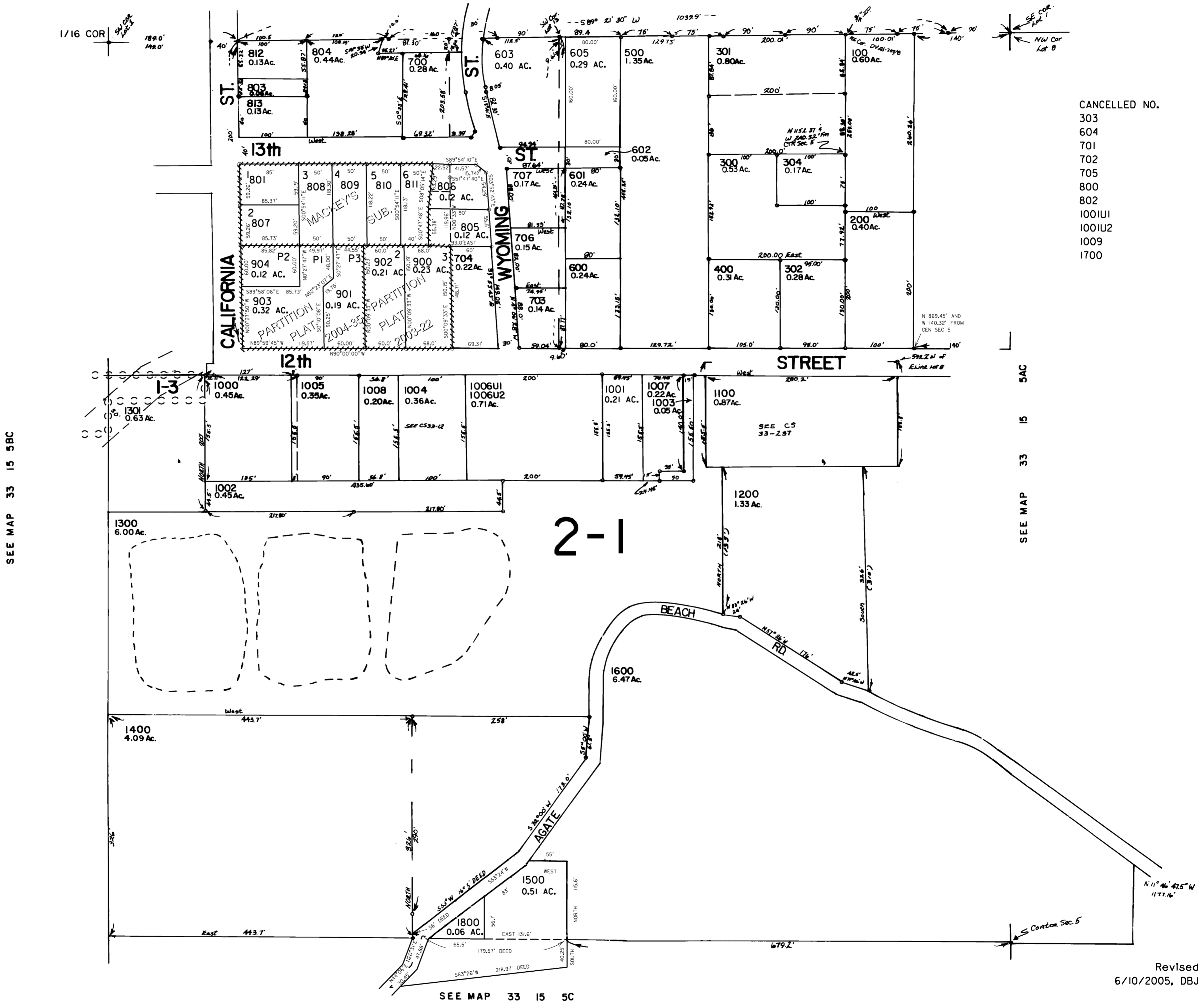
THIS MAP WAS PREPARED FOR
ASSESSMENT PURPOSE ONLY

SE1/4 NW1/4 SEC. 5 T.33S. R.15W. W.M.
CURRY COUNTY

33 15 5 BD

1" = 100'

SEE MAP 33 15 5BA



Revised
6/10/2005, DBJ

33 15 5 BD