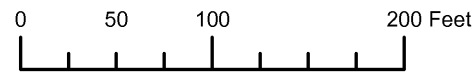


THIS MAP WAS PREPARED FOR ASSESSMENT PURPOSE ONLY

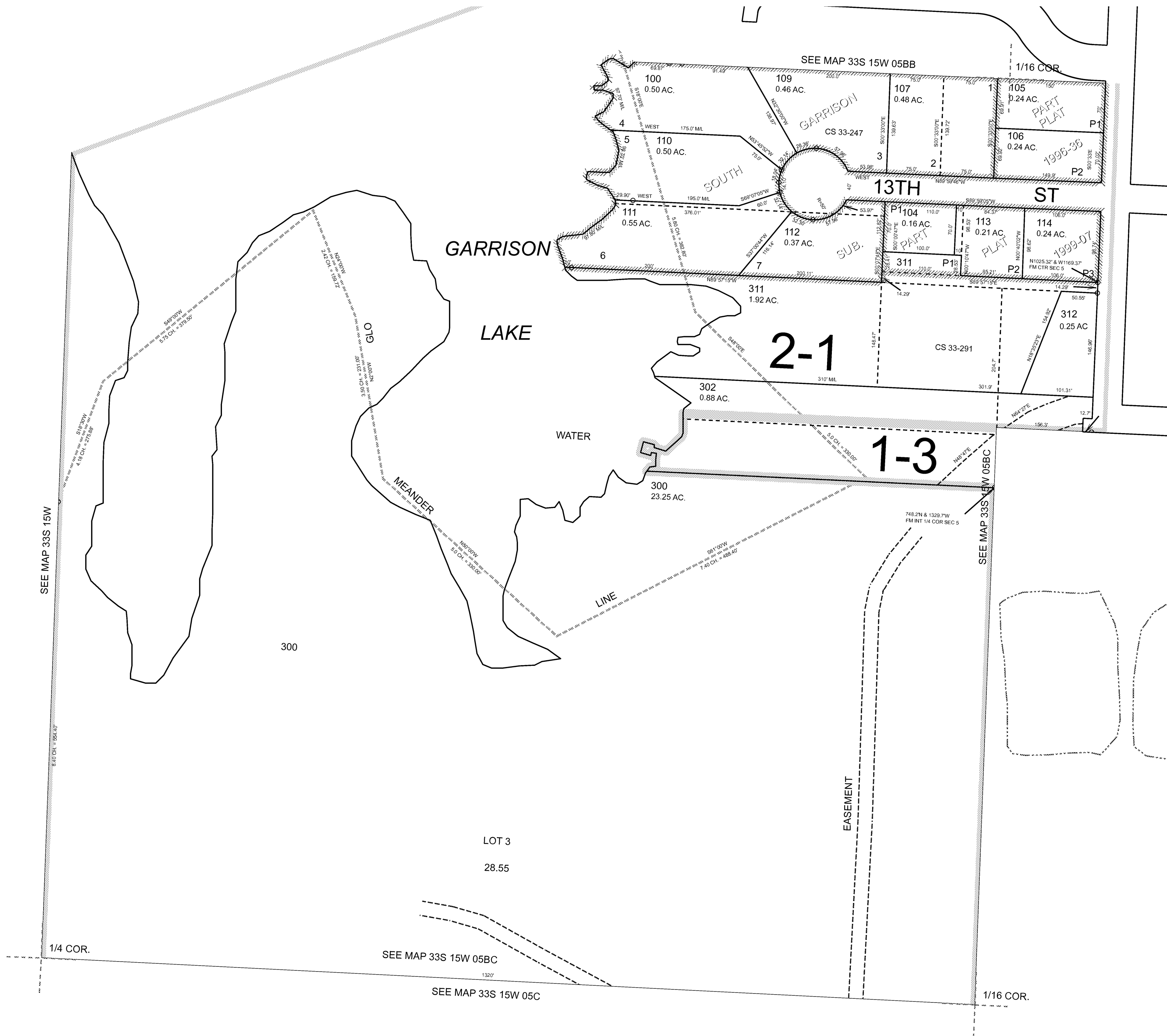


S.W. 1/4 N.W. 1/4 SEC. 5 T.33S. R.15W. W.M.  
CURRY COUNTY

1" = 100'

33S15W05BC  
PORT ORFORD

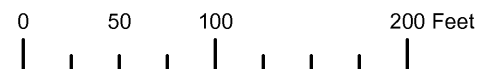
CANCELLED:  
101  
102  
200  
310  
103  
108



Revised: RAA  
5/26/2009

PORT ORFORD  
33S15W05BC

THIS MAP WAS PREPARED FOR ASSESSMENT PURPOSE ONLY



S.W.1/4 N.W.1/4 SEC.5 T.33S. R.15W. W.M.  
CURRY COUNTY

1" = 100'

33S15W05BC  
PORT ORFORD

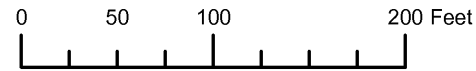
CANCELLED:  
101  
102  
200  
310  
103  
108



Revised RAA  
9/18/2008

PORT ORFORD  
33S15W05BC

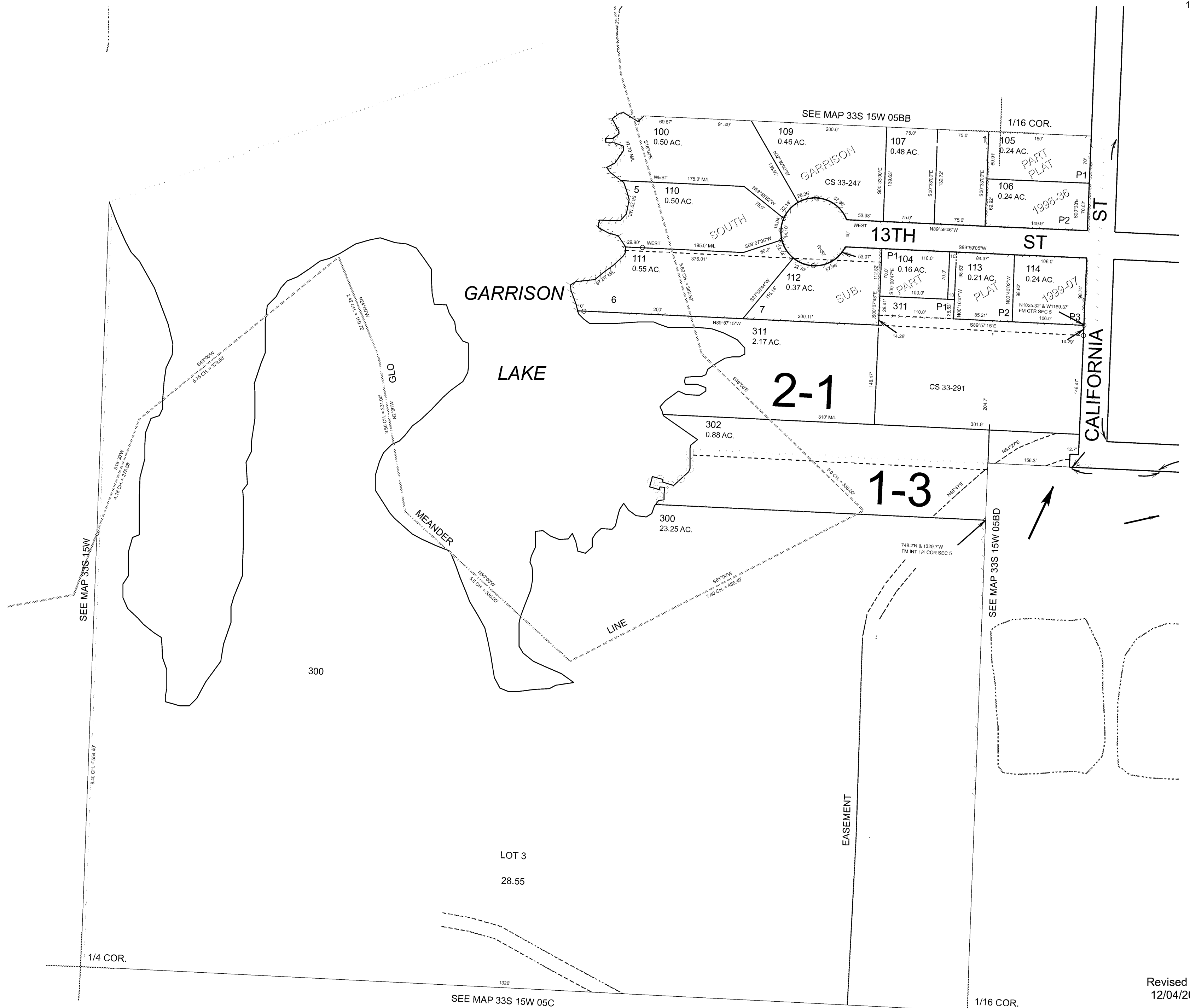
THIS MAP WAS PREPARED FOR ASSESSMENT PURPOSE ONLY



S.W.1/4 N.W.1/4 SEC.5 T.33S. R.15W. W.M.  
CURRY COUNTY  
1" = 100'

33S15W05BC  
PORT ORFORD

- CANCELLED:  
101  
102  
200  
310  
103  
108



Revised RAA  
12/04/2007  
PORT ORFORD  
33S15W05BC

THIS MAP WAS PREPARED FOR  
ASSESSMENT PURPOSE ONLY

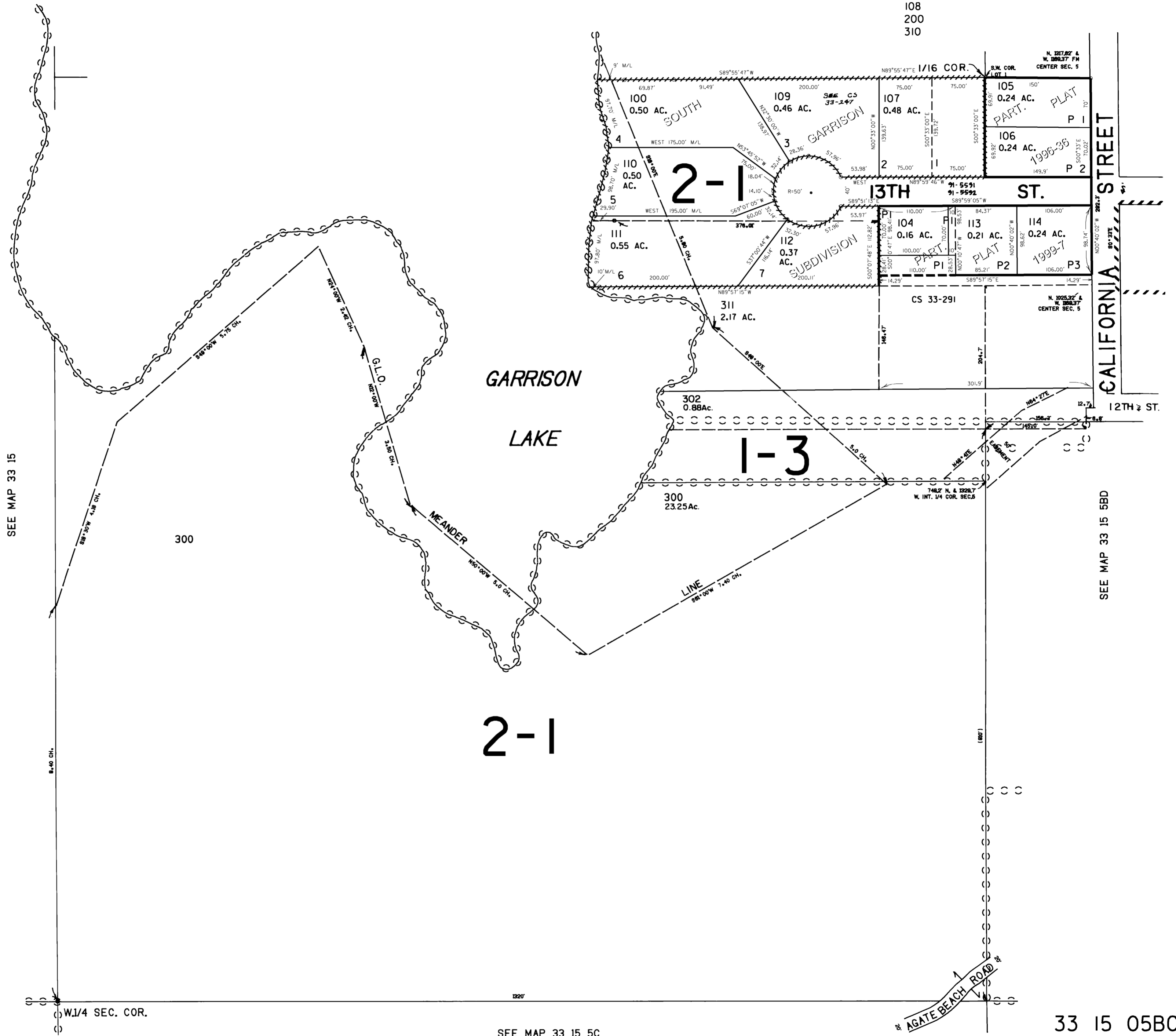
SW1/4 NW1/4 SEC. 5 T.33S. R.15W. W.M.  
CURRY COUNTY

33 15 05BC  
PORT ORFORD

1" = 100'

SEE MAP 33 15 5BB

CANCELLED NO.'S  
101  
102  
103  
108  
200  
310



SEE MAP 33 15

SEE MAP 33 15 5BB

2-1

1-3

GARRISON  
LAKE

2-1

105  
0.24 AC.  
PART. PLAT  
P 1

106  
0.24 AC.  
PART. PLAT  
P 2

104  
0.16 AC.  
PART. PLAT  
P 1

113  
0.21 AC.  
PART. PLAT  
P 2

114  
0.24 AC.  
PART. PLAT  
P 3

311  
2.17 AC.

302  
0.88 AC.

300  
23.25 AC.

W.1/4 SEC. COR.

SEE MAP 33 15 5C

33 15 05BC  
PORT ORFORD

Revised  
9/15/2004, DBJ