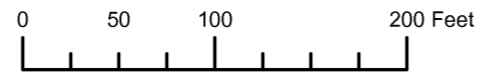


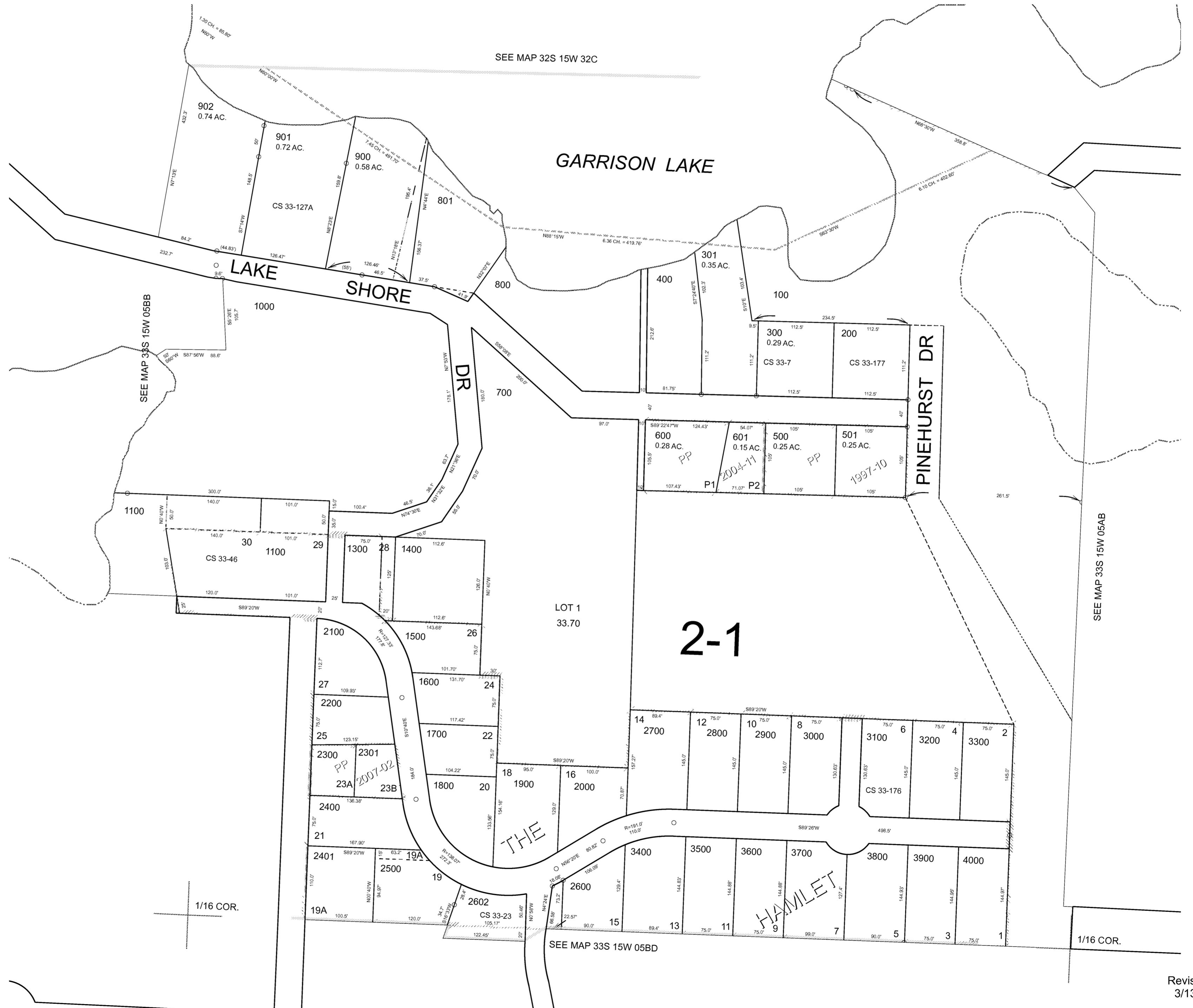
THIS MAP WAS PREPARED FOR ASSESSMENT PURPOSE ONLY



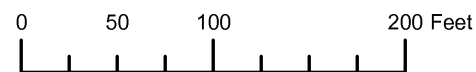
N.E.1/4 N.W.1/4 SEC.5 T.33S. R.15W. W.M.
CURRY COUNTY
1" = 100'

33S15W05BA
PORT ORFORD

CANCELLED:
1200
2501
2601
2603
2604



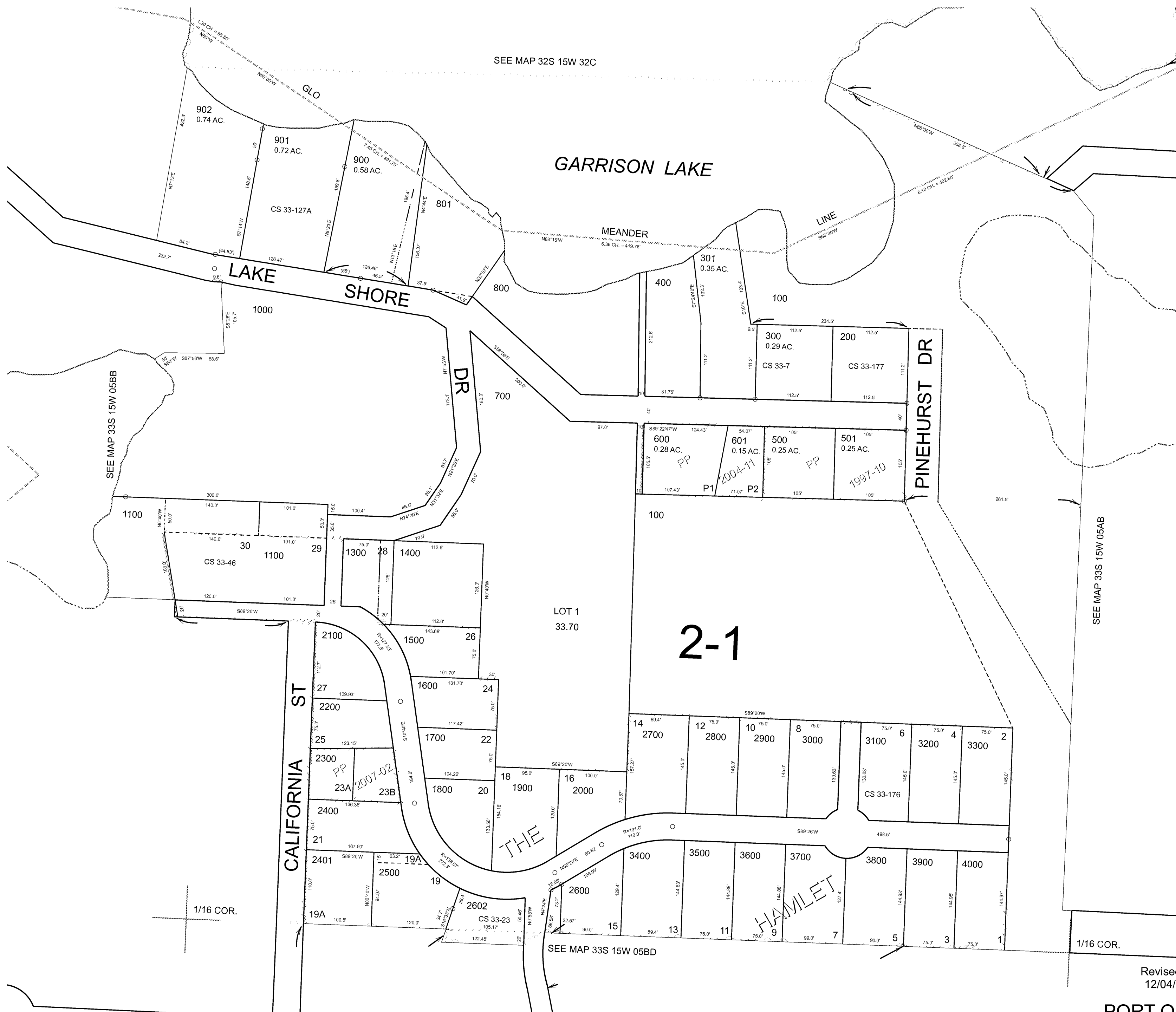
THIS MAP WAS PREPARED FOR ASSESSMENT PURPOSE ONLY



N.E.1/4 N.W.1/4 SEC.5 T.33S. R.15W. W.M. CURRY COUNTY 1" = 100'

33S15W05BA PORT ORFORD

CANCELLED: 1200 2501 2601 2603 2604



SEE MAP 33S 15W 05AB

SEE MAP 32S 15W 32C

SEE MAP 33S 15W 05BB

SEE MAP 33S 15W 05BD

1/16 COR.

1/16 COR.

Revised RAA 12/04/2007

PORT ORFORD 33S15W05BA

THIS MAP WAS PREPARED FOR
ASSESSMENT PURPOSE ONLY

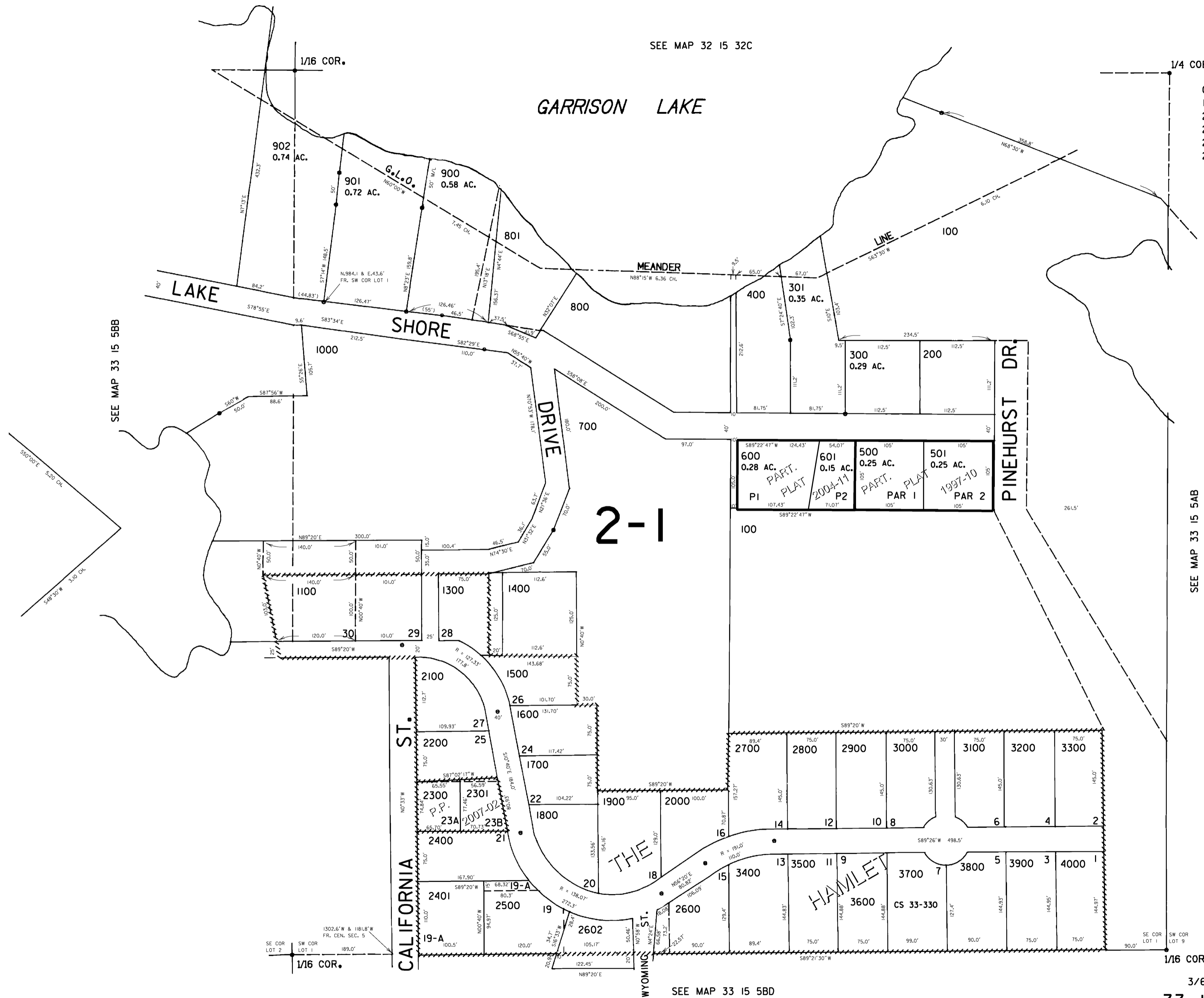
NE1/4 NW1/4 SEC. 5 T.33S. R.15W. W.M.
CURRY COUNTY

1" = 100'

33 15 5BA
PORT ORFORD

SEE MAP 32 15 32C

CANCELLED NO.
1200
2501
2601
2603
2604



SEE MAP 33 15 5BB

SEE MAP 33 15 5AB

2-1

SEE MAP 33 15 5BD

Revised
3/6/2007, RAA
33 15 5BA
PORT ORFORD

THIS MAP WAS PREPARED FOR
ASSESSMENT PURPOSE ONLY

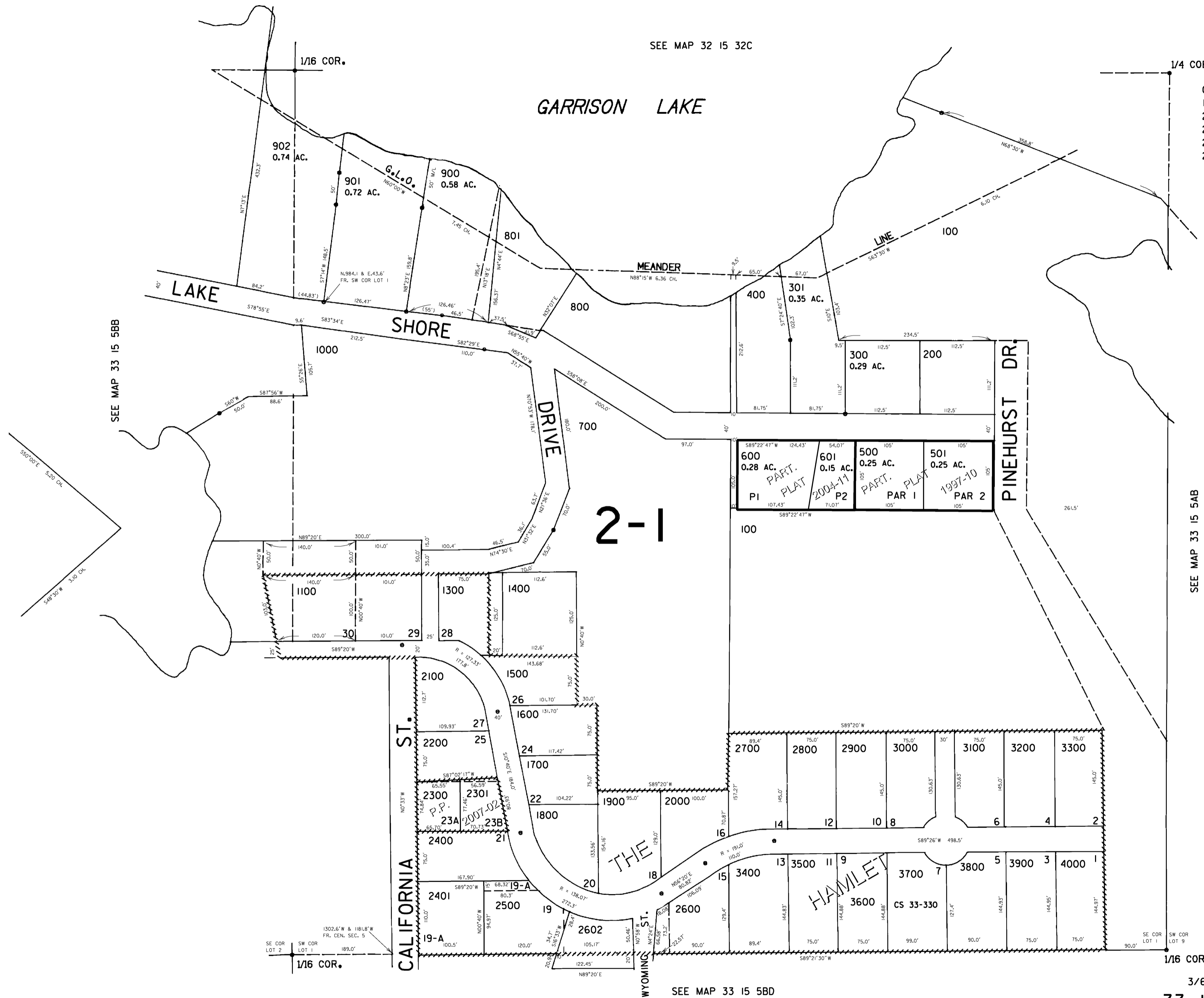
NE1/4 NW1/4 SEC. 5 T.33S. R.15W. W.M.
CURRY COUNTY

1" = 100'

33 15 5BA
PORT ORFORD

SEE MAP 32 15 32C

CANCELLED NO.
1200
2501
2601
2603
2604



SEE MAP 33 15 5BB

SEE MAP 33 15 5AB

2-1

SEE MAP 33 15 5BD

Revised
3/6/2007, RAA
33 15 5BA
PORT ORFORD

THIS MAP WAS PREPARED FOR
ASSESSMENT PURPOSE ONLY

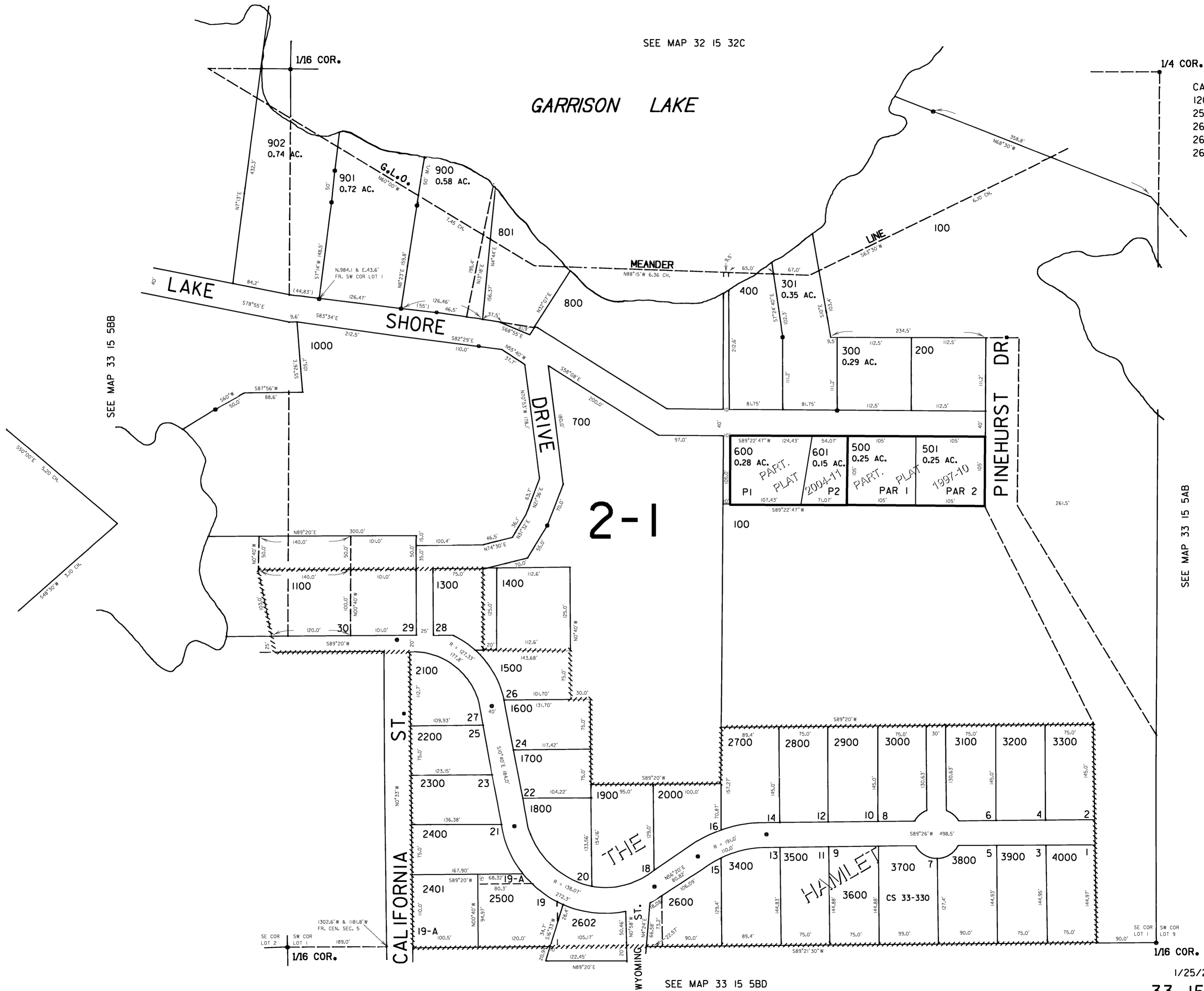
NE1/4 NW1/4 SEC. 5 T.33S. R.15W. W.M.
CURRY COUNTY

33 15 5BA
PORT ORFORD

1" = 100'

SEE MAP 32 15 32C

CANCELLED NO.
1200
2501
2601
2603
2604



SEE MAP 33 15 5BB

SEE MAP 33 15 5AB

SEE MAP 33 15 5BD

Revised
1/25/2006, DBJ
33 15 5BA
PORT ORFORD

THIS MAP WAS PREPARED FOR
ASSESSMENT PURPOSE ONLY

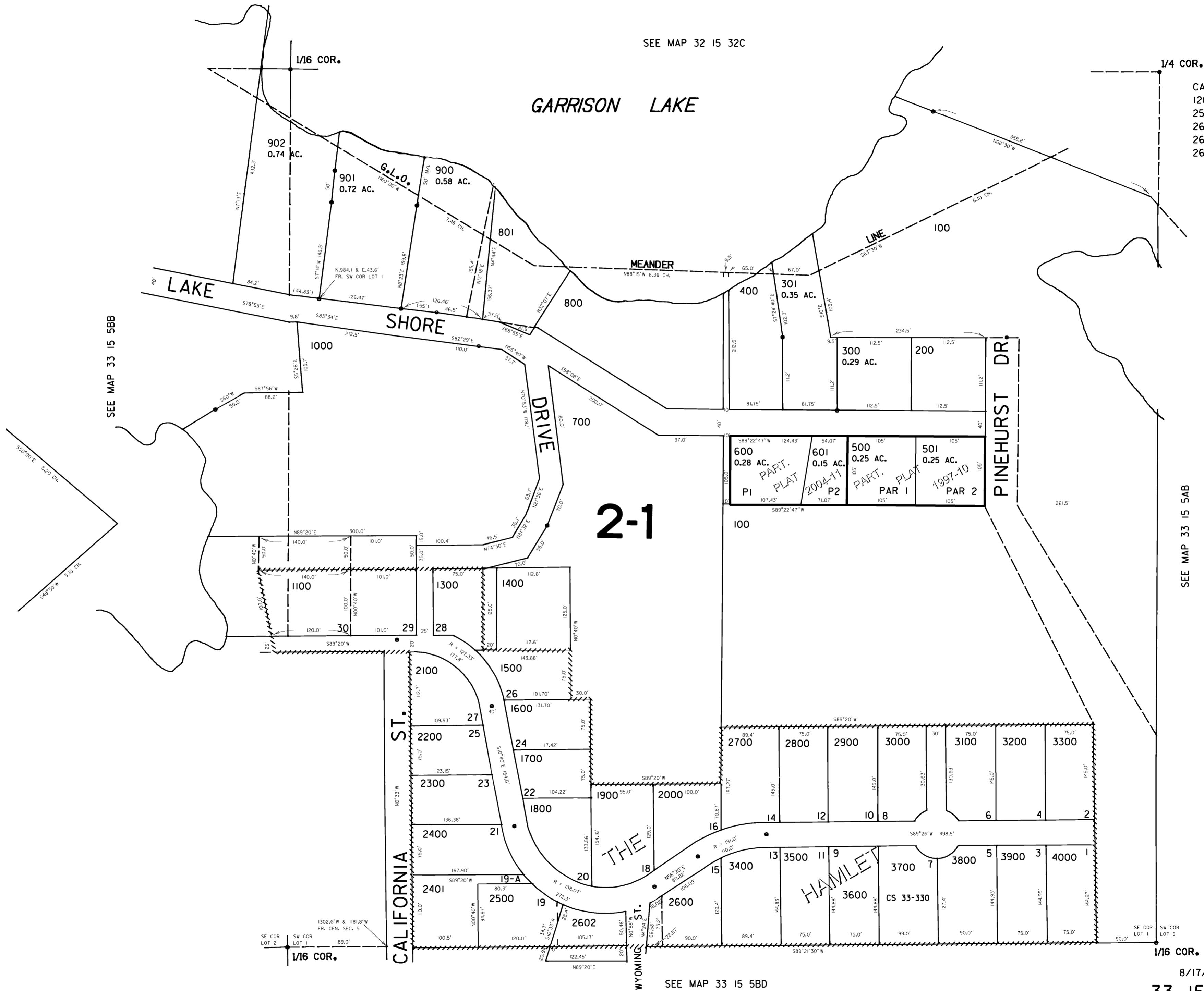
NE1/4 NW1/4 SEC. 5 T.33S. R.15W. W.M.
CURRY COUNTY

1" = 100'

33 15 5BA
PORT ORFORD

SEE MAP 32 15 32C

CANCELLED NO.
1200
2501
2601
2603
2604



SEE MAP 33 15 5AB

SEE MAP 33 15 5BD

Revised
8/17/2004, CS
33 15 5BA
PORT ORFORD