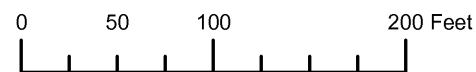


THIS MAP WAS PREPARED FOR ASSESSMENT PURPOSE ONLY

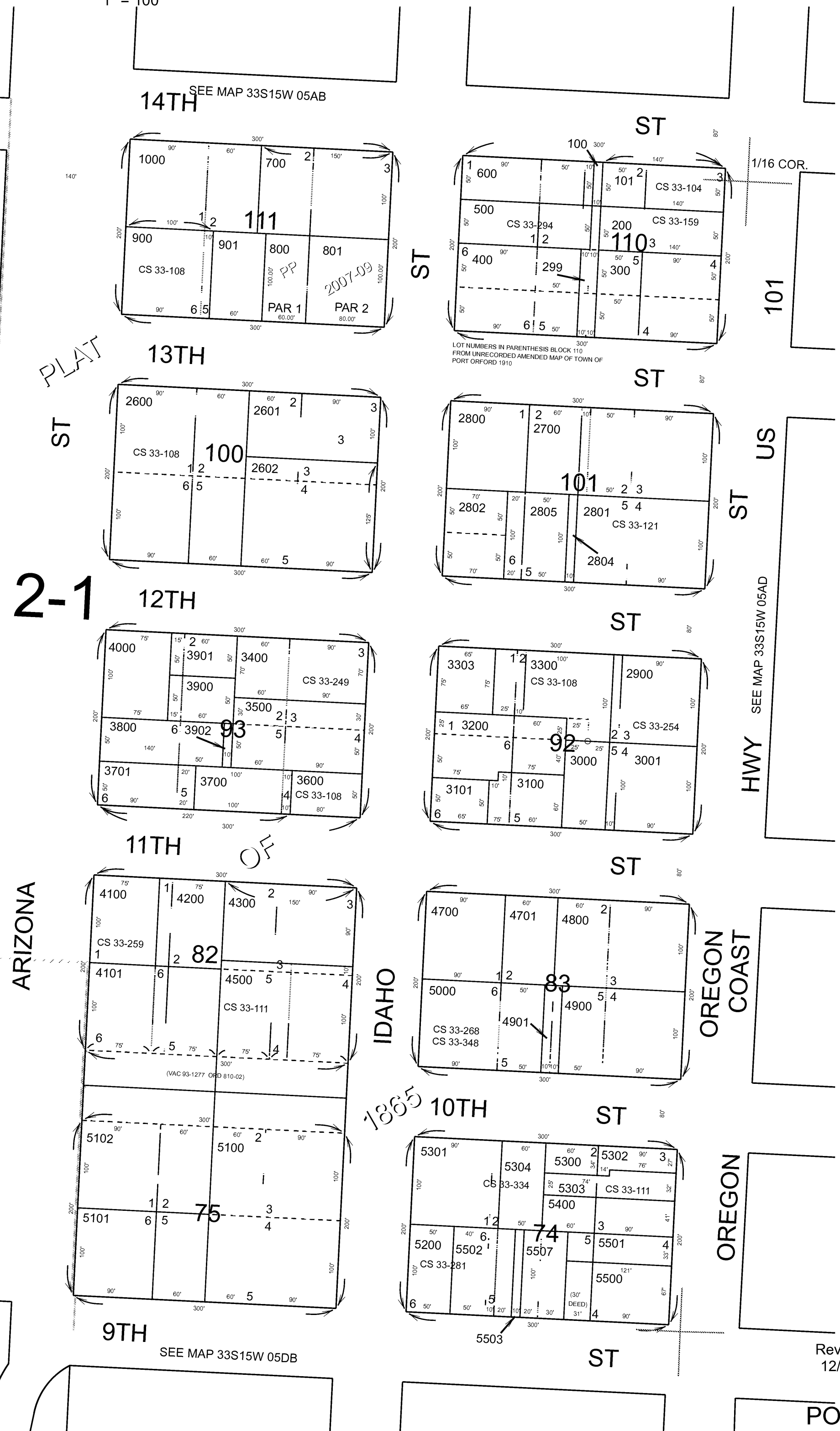


S.W.1/4 N.E.1/4 SEC.5 T.33S. R.15W. W.M. CURRY COUNTY

1" = 100'

33S15W05AC PORT ORFORD

- CANCELLED:
- 1001
 - 1303
 - 1400
 - 1500
 - 1601
 - 2100
 - 2200
 - 2402
 - 2502
 - 2803
 - 2806
 - 3301
 - 3302
 - 4400
 - 4501
 - 4600
 - 5001
 - 5504 THRU 5506



Revised RAA 12/04/2007

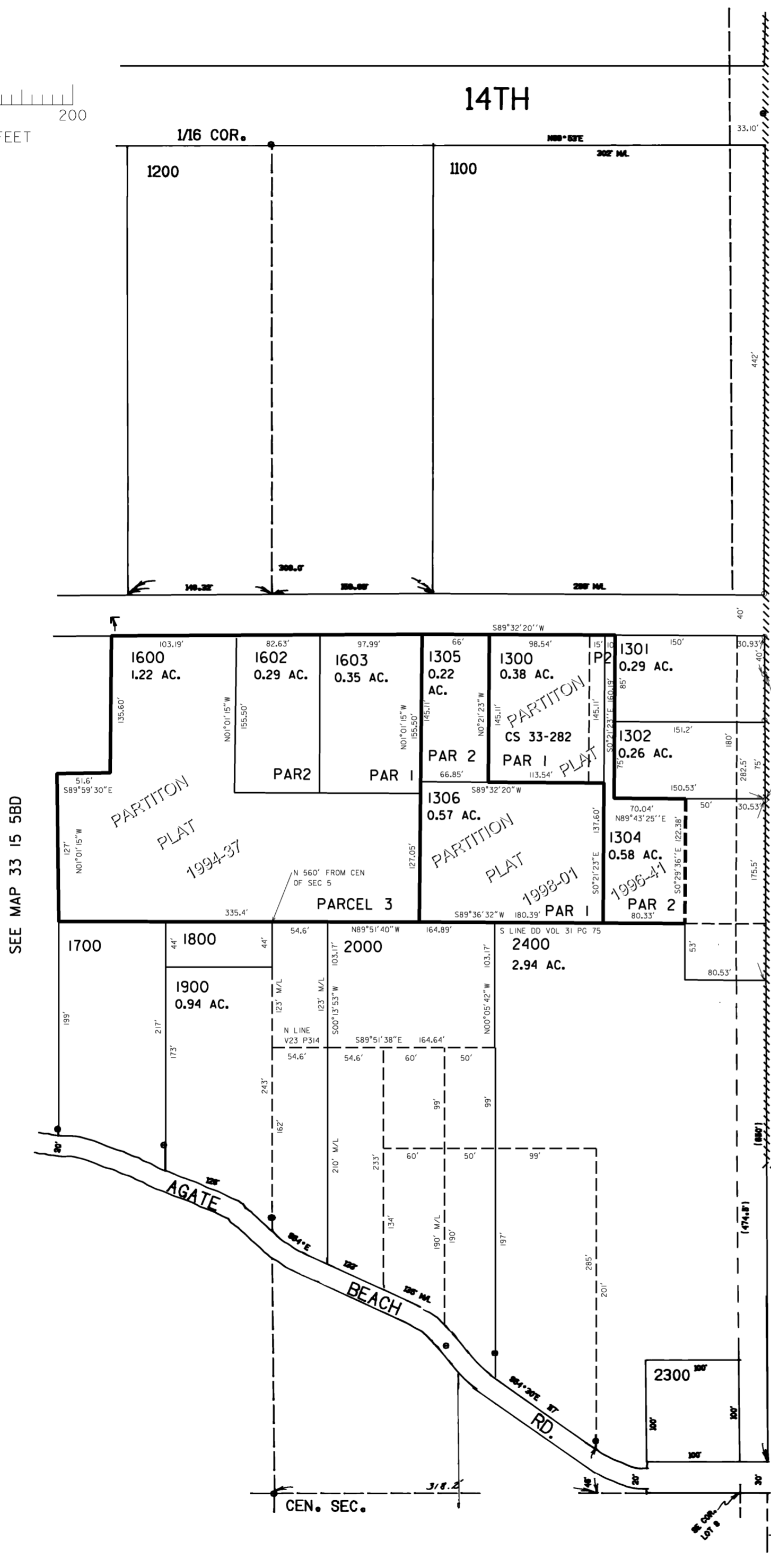
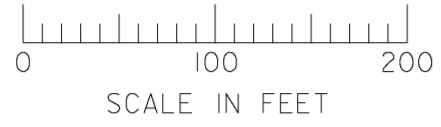
PORT ORFORD 33S15W05AC

THIS MAP WAS PREPARED FOR
ASSESSMENT PURPOSE ONLY

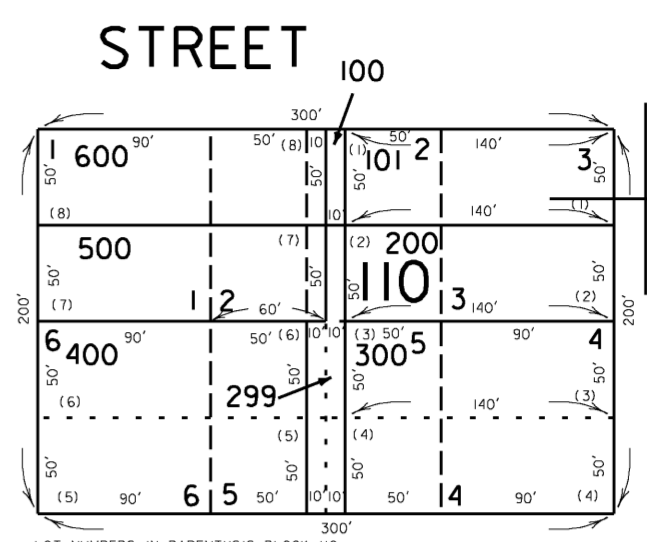
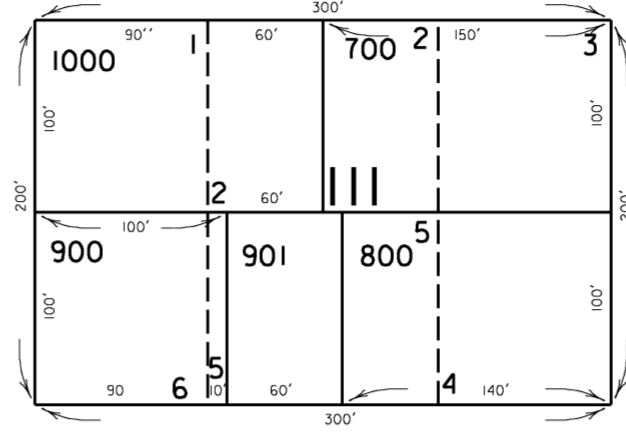
SW1/4 NE1/4 SEC.5 T.33S. R.15W. W.M.
CURRY COUNTY

33 15 5AC
PORT ORFORD

1"=100'



SEE MAP 33 15 5AB



1/16 COR. CANCELLED NO.

- 1001
- 1303
- 1400
- 1500
- 1601
- 2100
- 2200
- 2402
- 2502
- 2803
- 2806
- 3301
- 3302
- 4400
- 4501
- 4600
- 5001
- 5504 THRU
- 5506

STREET

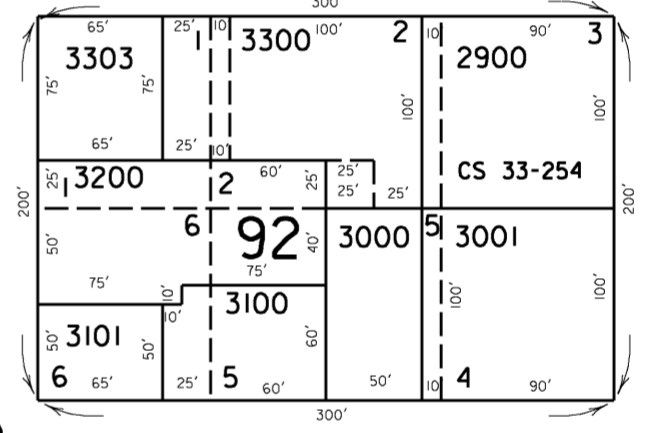
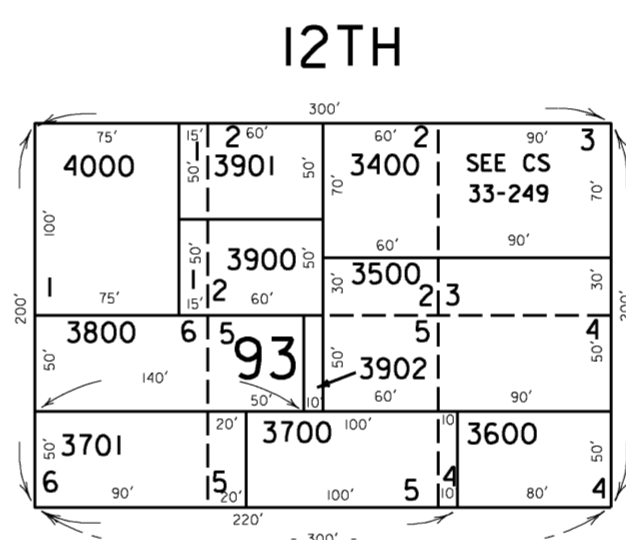
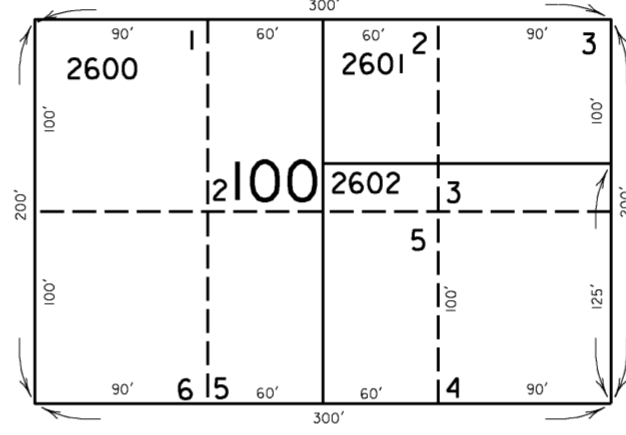
PLAT

STREET

STREET

U.S. 101

2-1

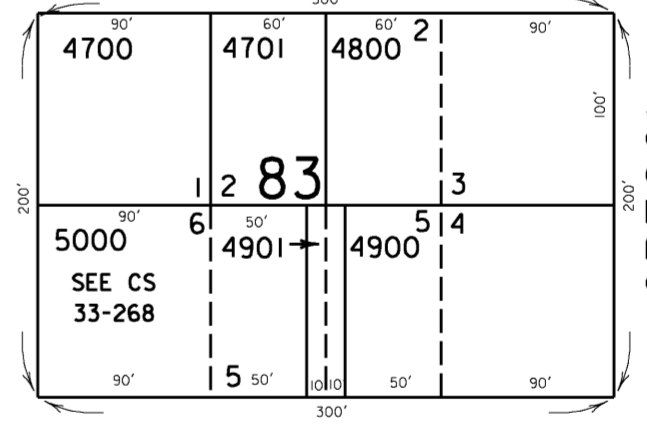
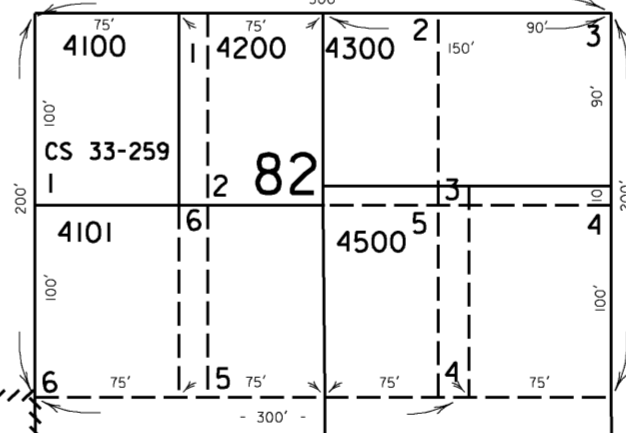


HIGHWAY

SEE MAP 33 15 5AD

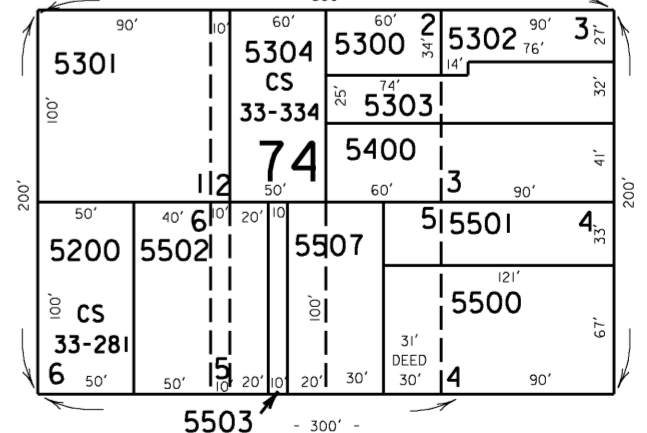
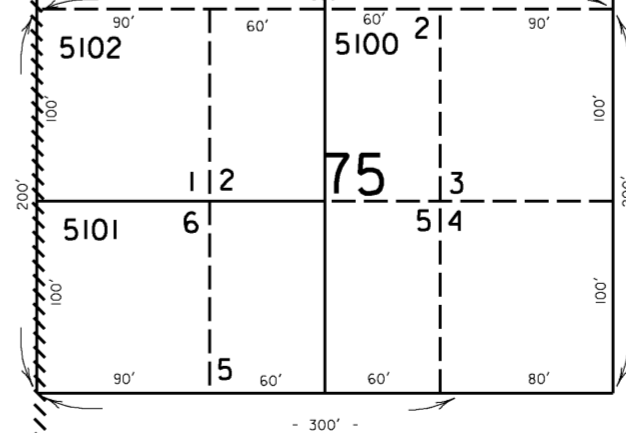
ARIZONA

1865



IDAHO

OREGON COAST



1/16 COR. Revised 8/10/2005, DBJ

SEE MAP 33 15 5DB

33 15 5AC
PORT ORFORD