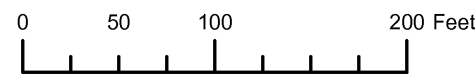


THIS MAP WAS PREPARED FOR ASSESSMENT PURPOSE ONLY



N.W.1/4 N.E.1/4 SEC.5 T.33S. R.15W. W.M. CURRY COUNTY

1" = 100'

33S15W05AB PORT ORFORD

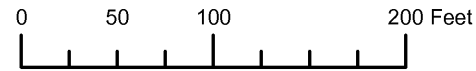
CANCELLED:

- 801
- 1703
- 1707
- 1709
- 1711
- 1712
- 1901
- 2101
- 2301
- 2400
- 3501
- 3502
- 3600
- 3800
- 3801
- 4000



Revised MRT 8/18/2008

THIS MAP WAS PREPARED FOR ASSESSMENT PURPOSE ONLY



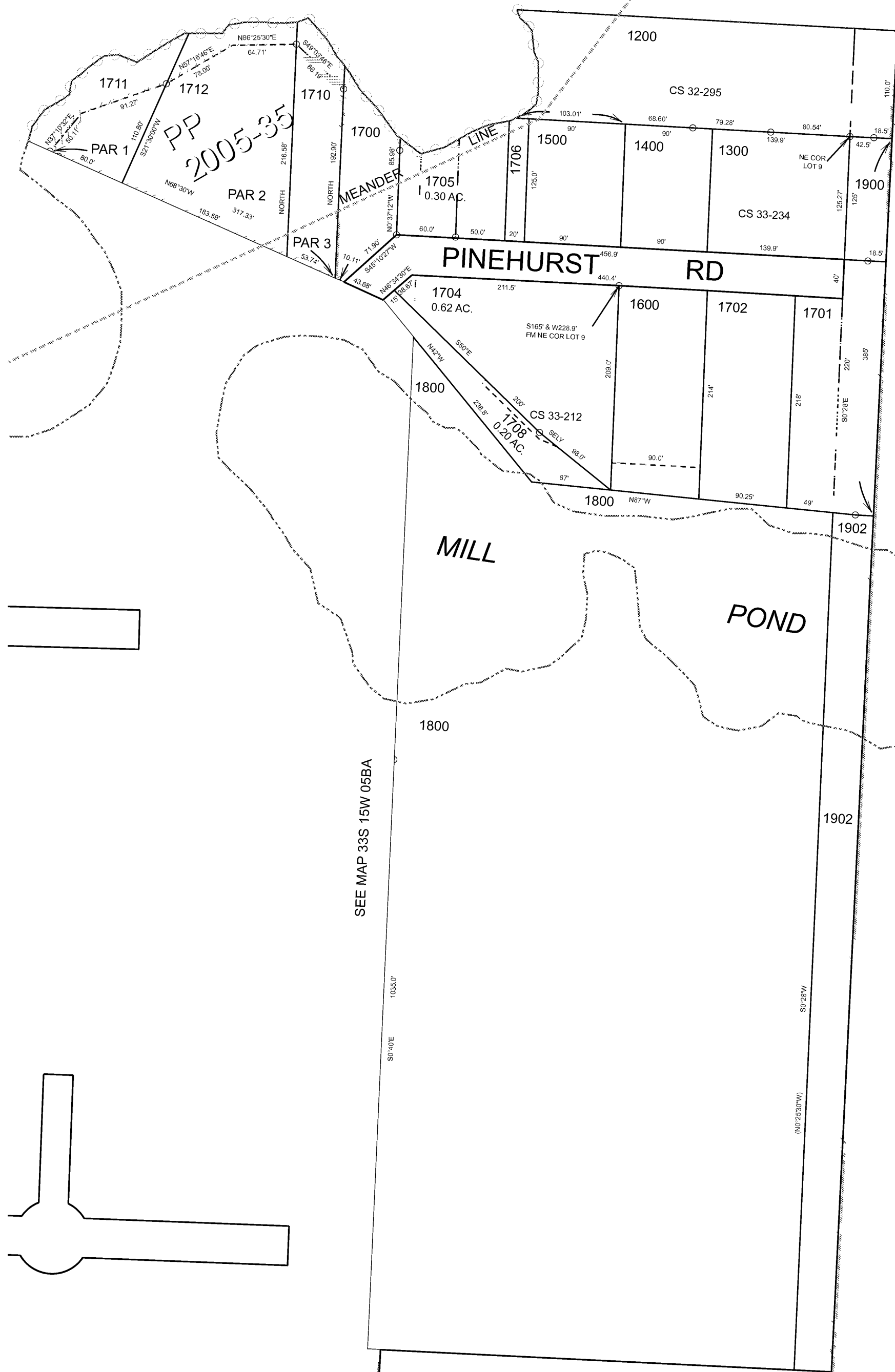
N.W.1/4 N.E.1/4 SEC.5 T.33S. R.15W. W.M.
CURRY COUNTY
1" = 100'

33S15W05AB
PORT ORFORD

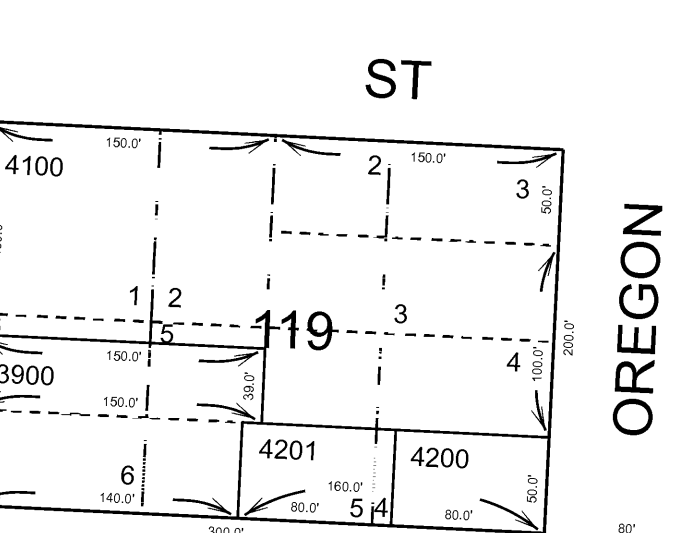
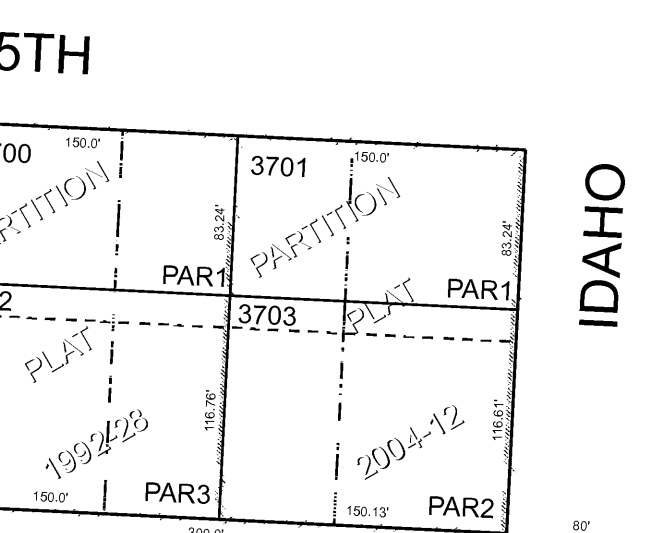
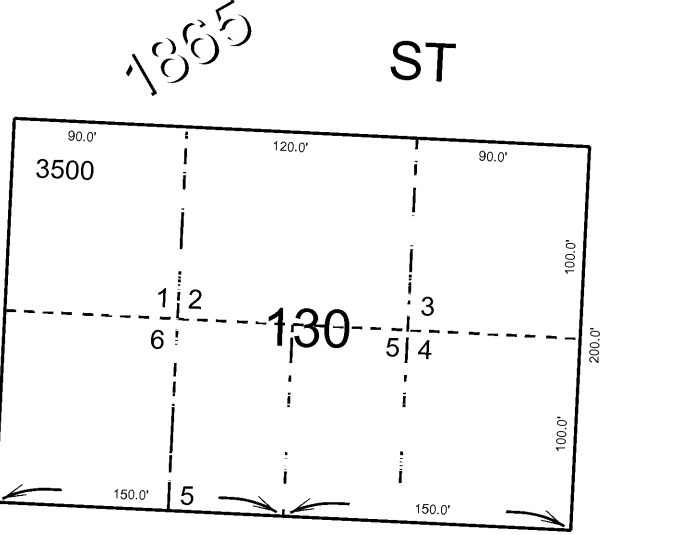
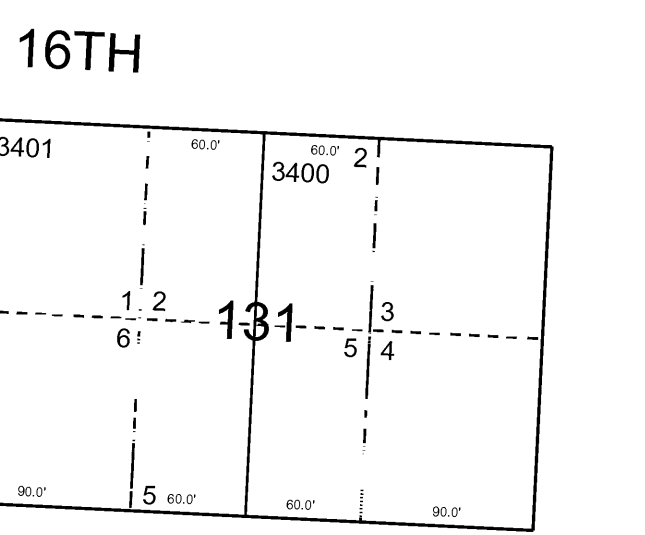
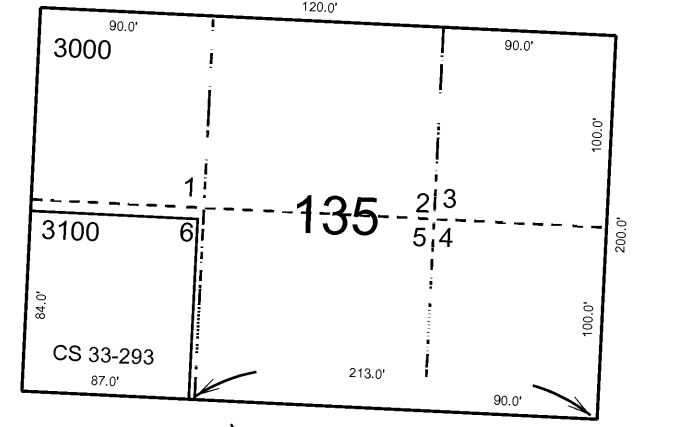
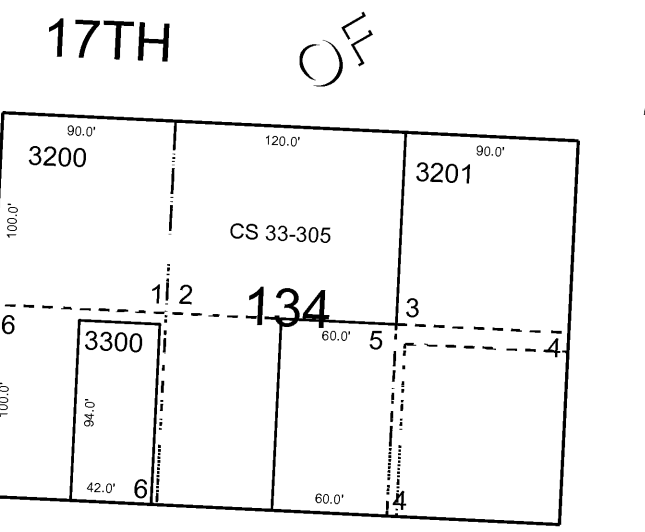
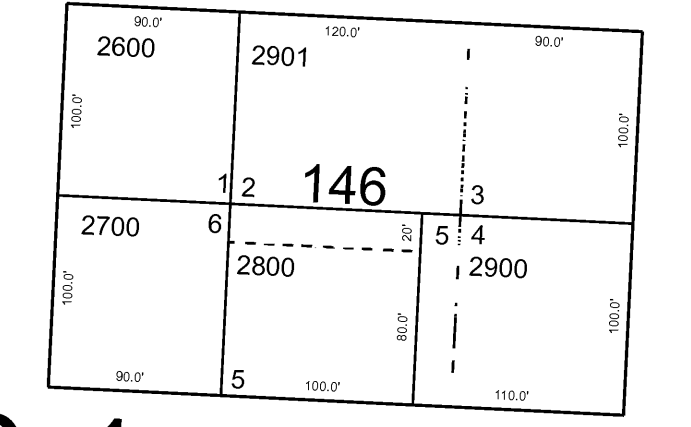
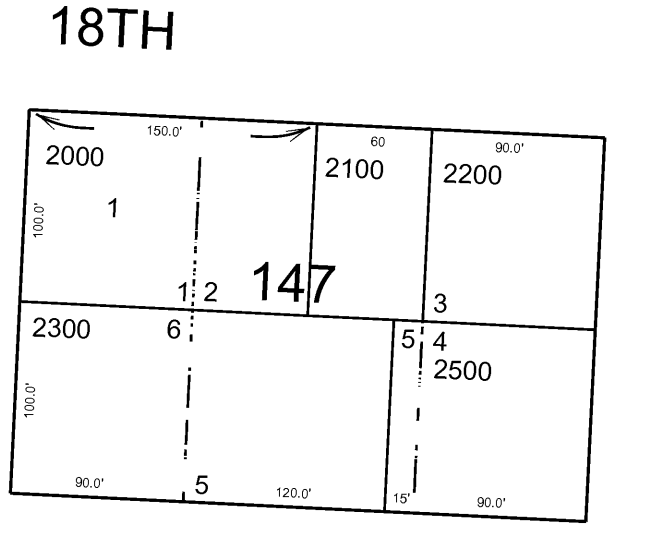
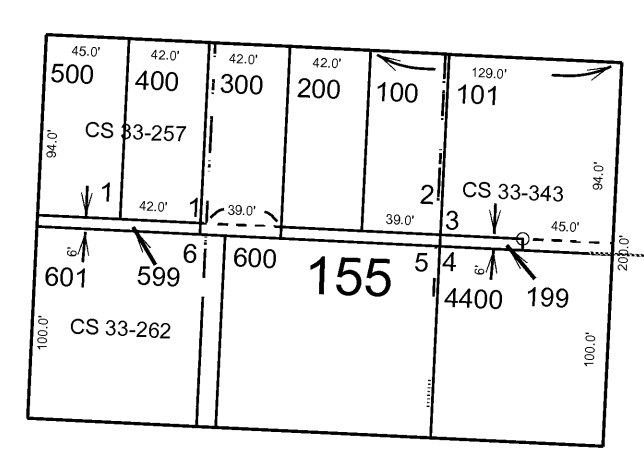
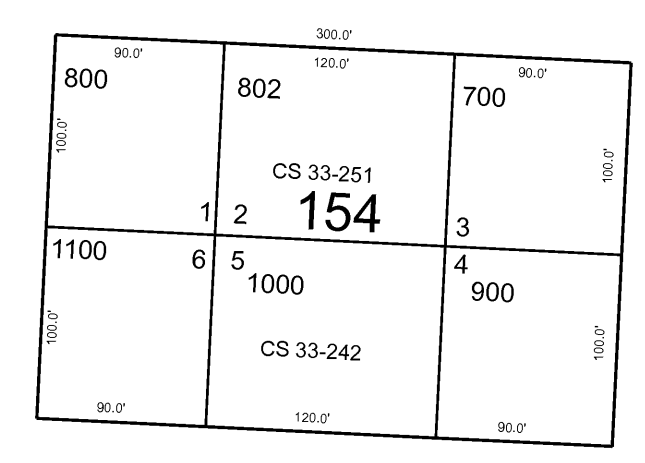
CANCELLED:

- 801
- 1703
- 1707
- 1709
- 1901
- 2101
- 2301
- 2400
- 3501
- 3502
- 3600
- 3800
- 3801
- 4000

SEE MAP 32S 15W 32DC



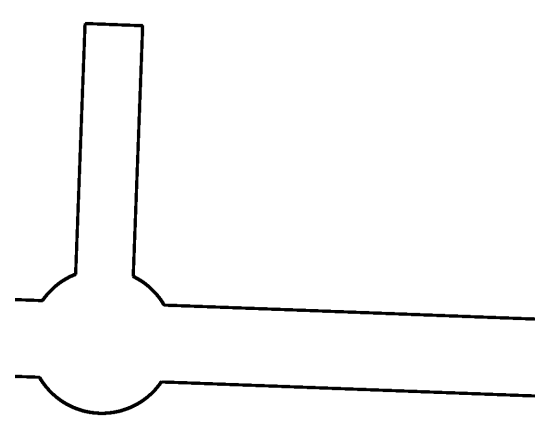
PLAT ST



SEE MAP 33S 15W 05BA

SEE MAP 33S 15W 05AA

SEE MAP 33S 15W 05AC



14TH ST
1/16 COR.

1/16 COR.

Revised RAA
12/04/2007

PORT ORFORD
33S15W05AB

THIS MAP WAS PREPARED FOR ASSESSMENT PURPOSE ONLY

NW1/4 NE1/4 SEC. 5 T.33S. R.15W. W.M. CURRY COUNTY

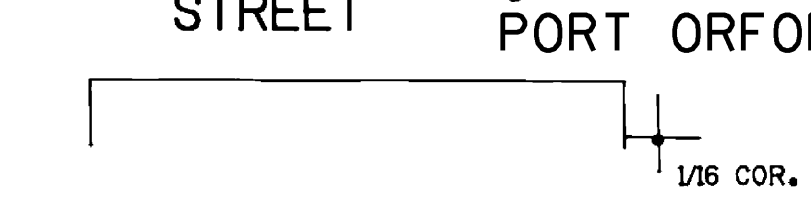
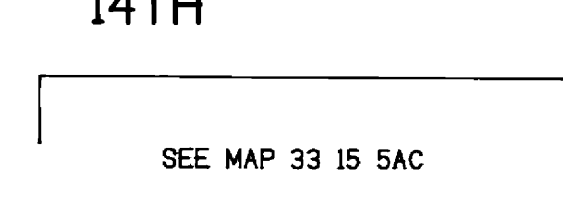
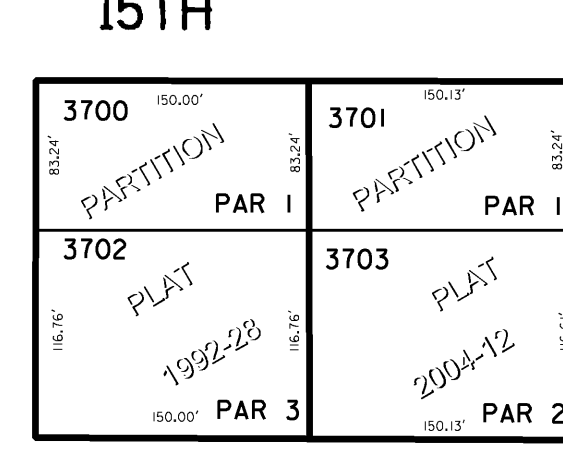
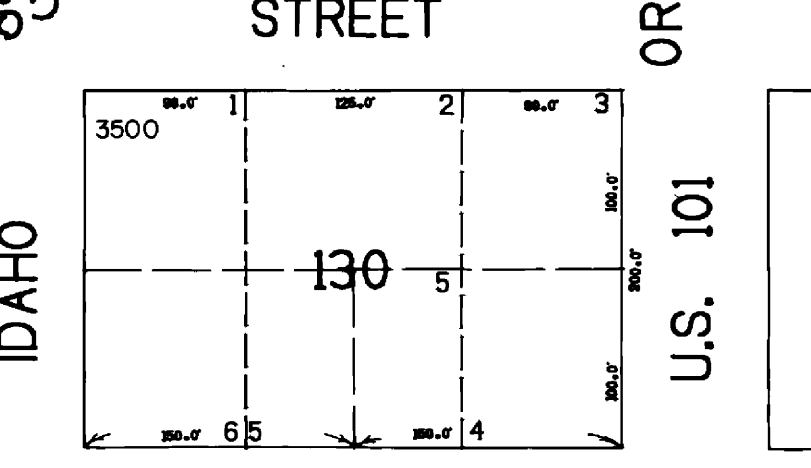
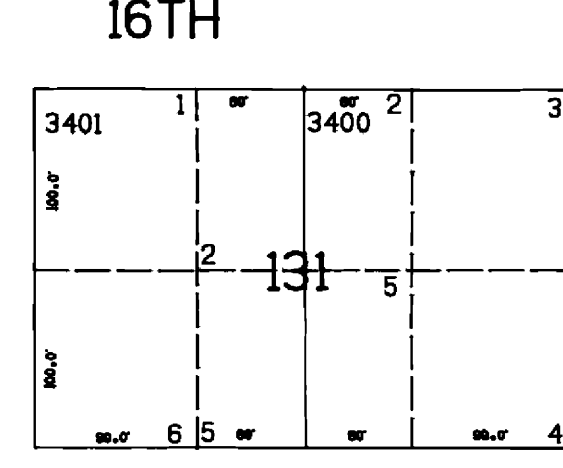
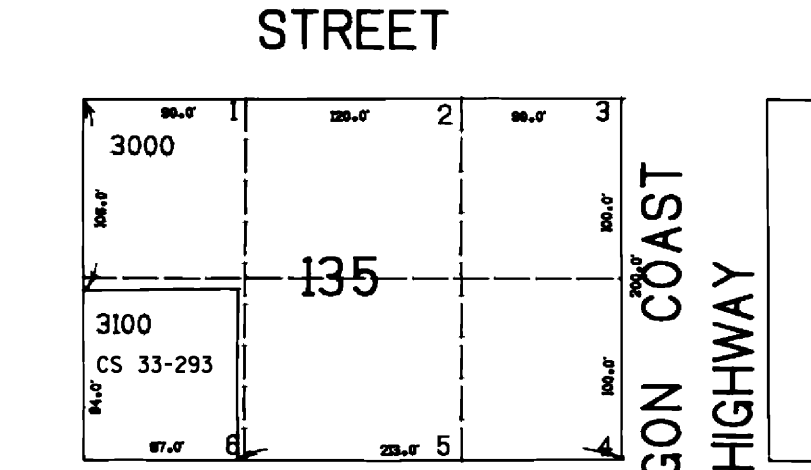
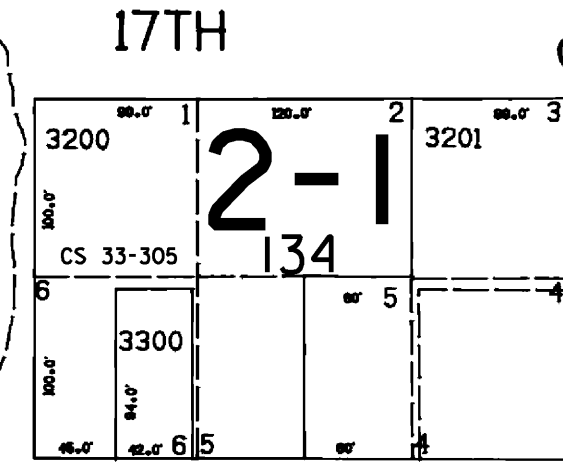
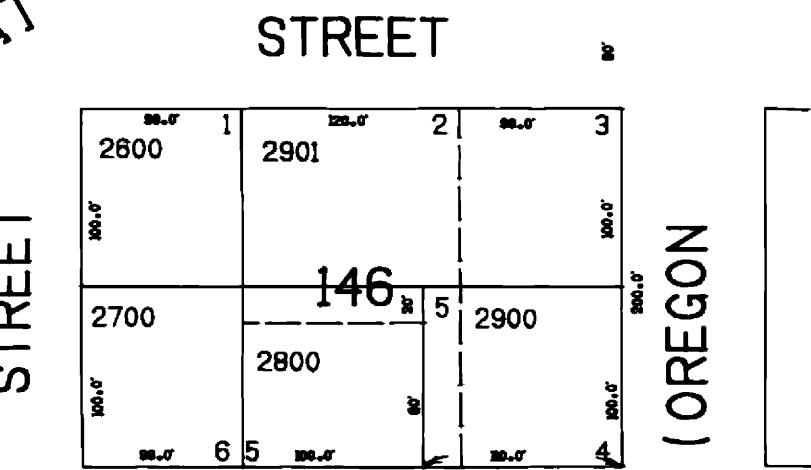
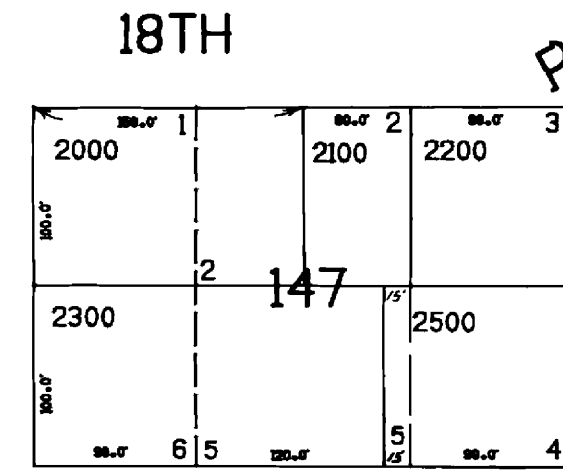
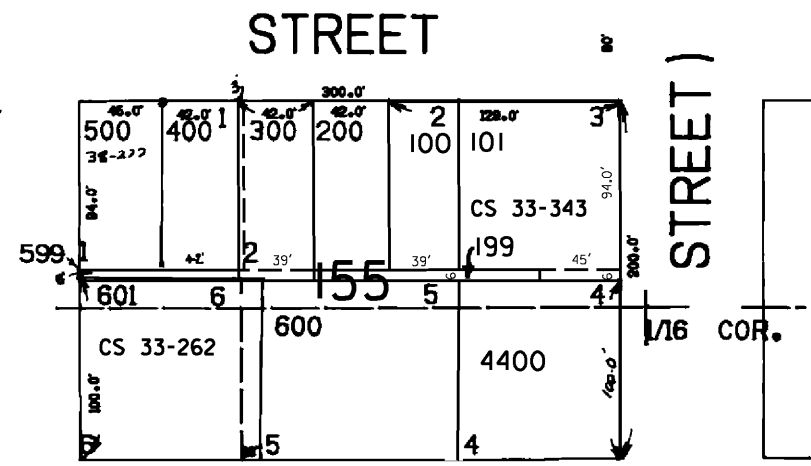
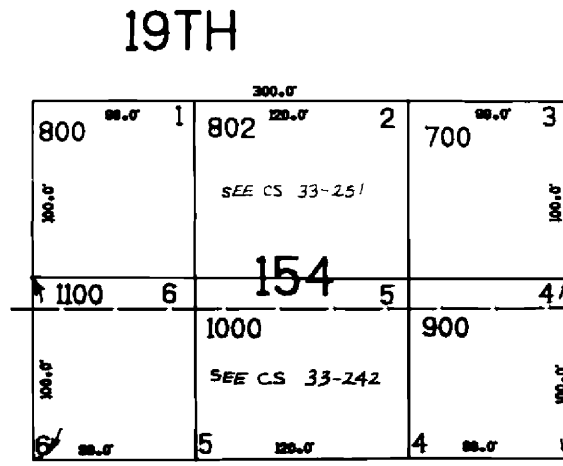
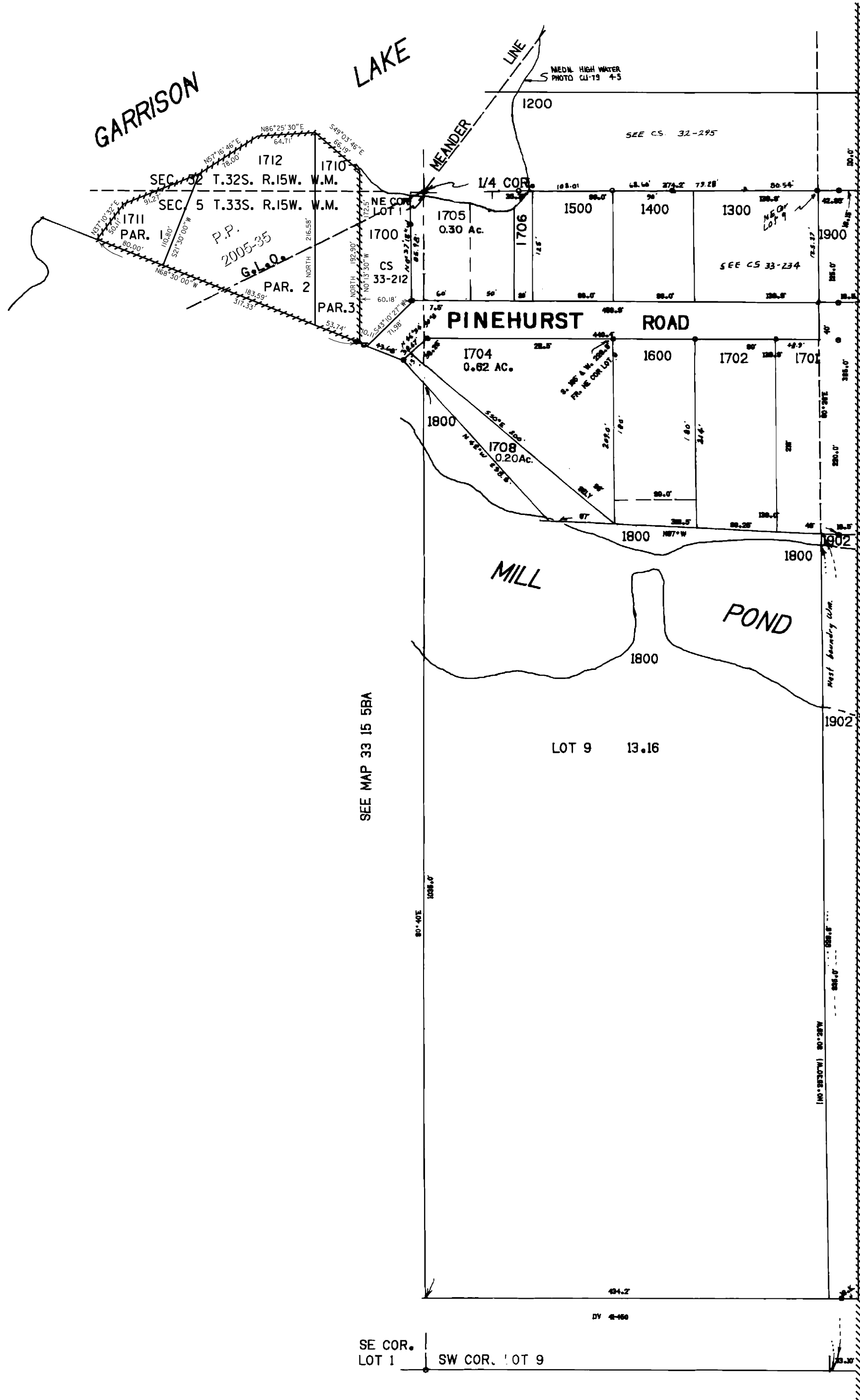
1" = 100'

SEE MAP 32 15 32DC

CANCELLED NO.'S

1707 2301
801 2400
1703 3502
1901 3801
2101 3501
4000 3600
3800

33 15 5AB
PORT ORFORD



Revised 7/25/2007, RAA

\$TIMES \$DATES \$FILES \$USERNAME\$

THIS MAP WAS PREPARED FOR
ASSESSMENT PURPOSE ONLY

NW1/4 NE1/4 SEC. 5 T.33S. R.15W. W.M.
CURRY COUNTY

1" = 100'

CANCELLED NO.'S

1707 2301
801 2400
1703 3502
1901 3801
2101 3501
4000 3600
3800

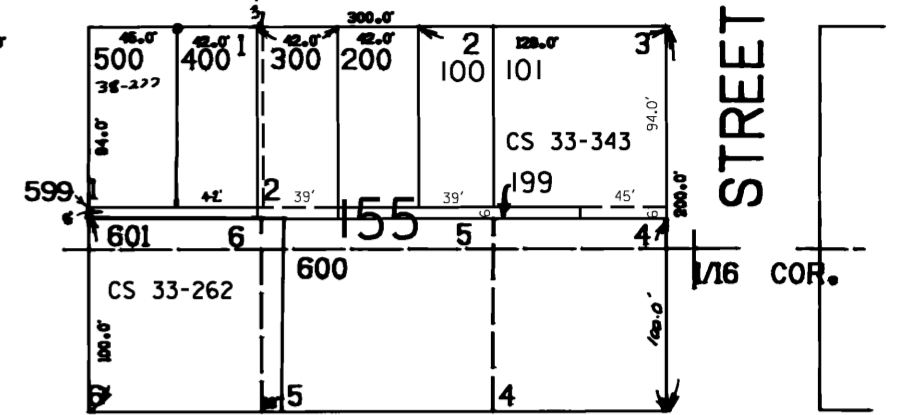
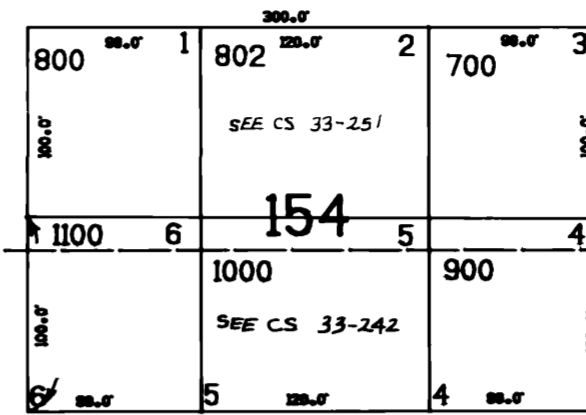
33 15 5AB
PORT ORFORD

SEE MAP 32 15 32DC

1709

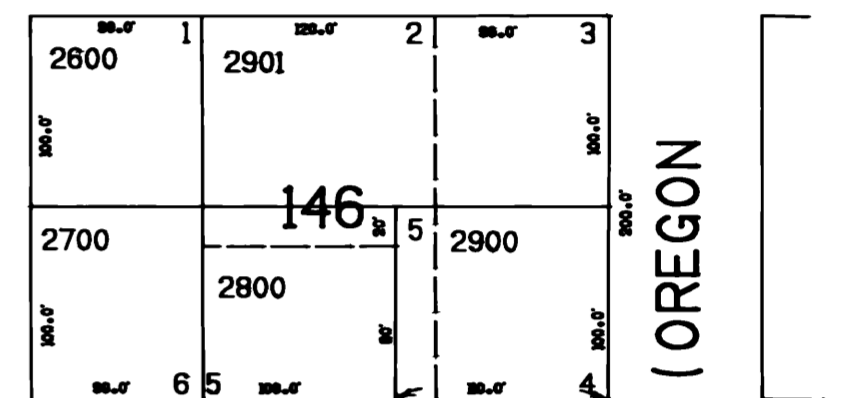
19TH

STREET



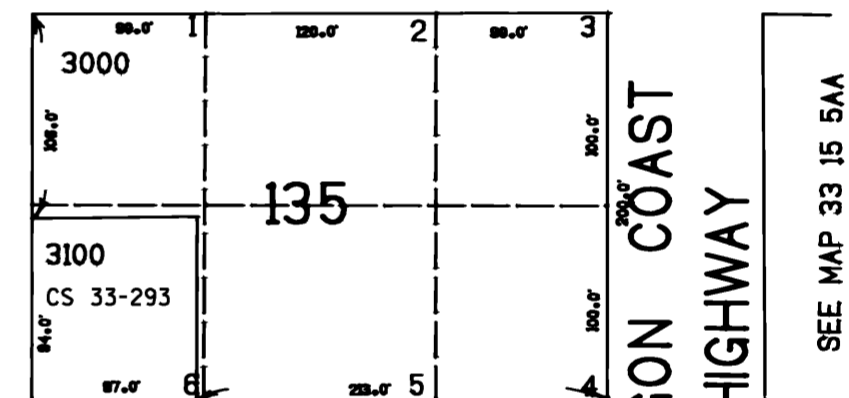
18TH

STREET



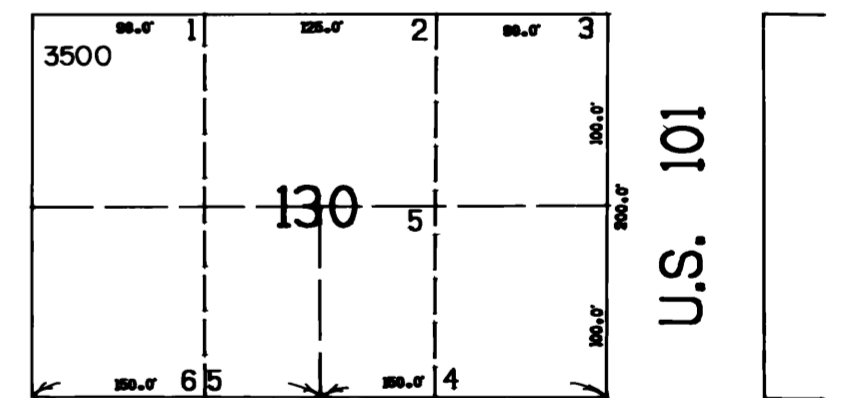
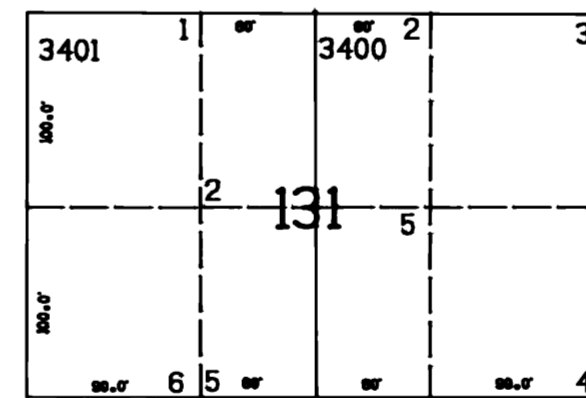
17TH

STREET



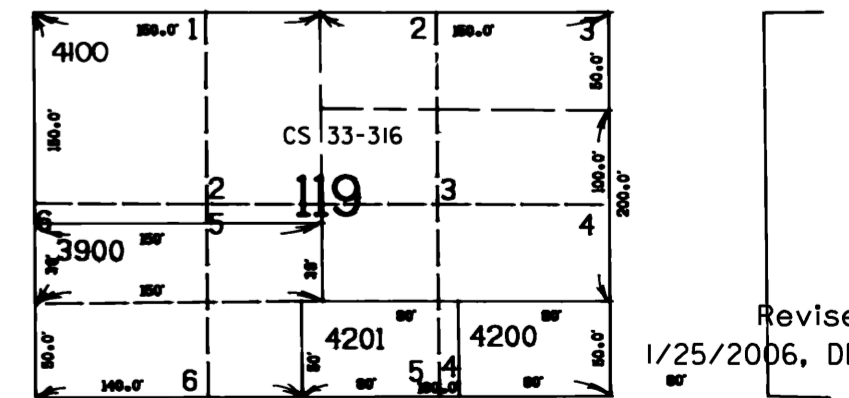
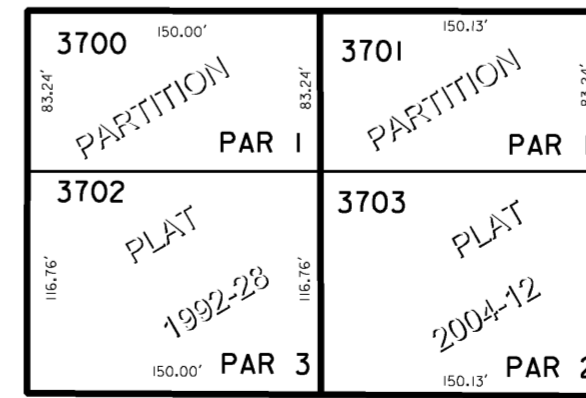
16TH

STREET



15TH

STREET



14TH

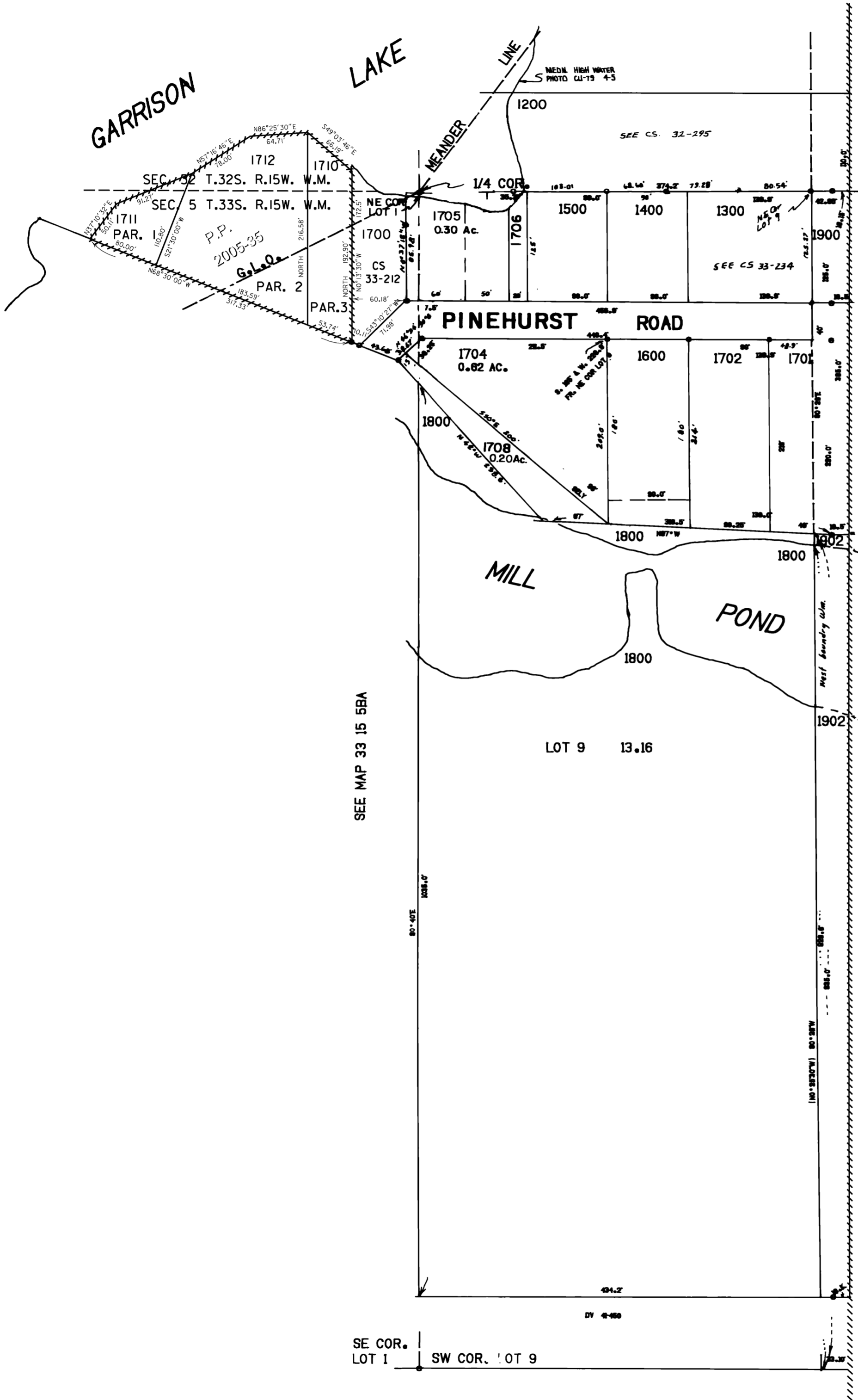
STREET

SEE MAP 33 15 5AC

33 15 5AB
PORT ORFORD

SEE MAP 33 15 5AC

1/16 COR.



THIS MAP WAS PREPARED FOR
ASSESSMENT PURPOSE ONLY

NW1/4 NE1/4 SEC. 5 T.33S. R.15W. W.M.
CURRY COUNTY

1" = 100'

CANCELLED NO.'S

1707 2301
801 2400
1703 3502
1901 3801
2101 3501
4000 3600
3800

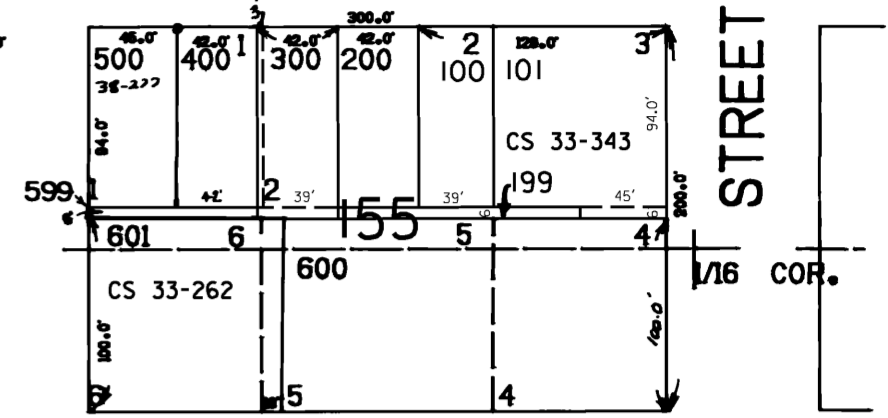
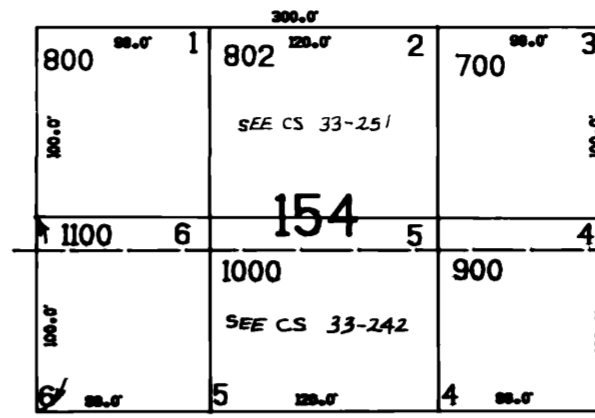
33 15 5AB
PORT ORFORD

SEE MAP 32 15 32DC

1709

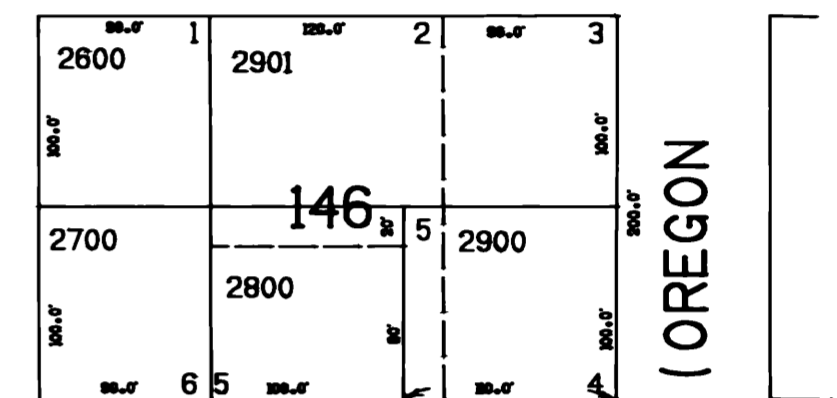
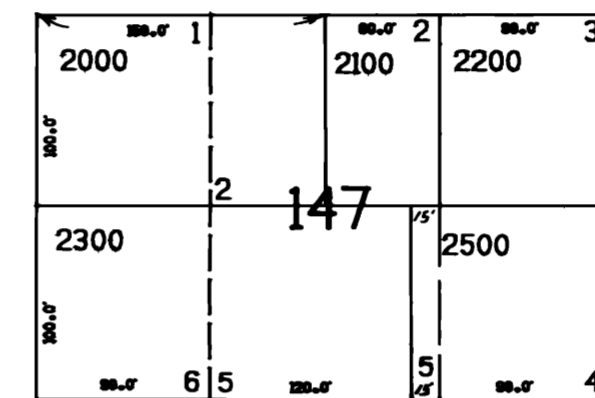
19TH

STREET



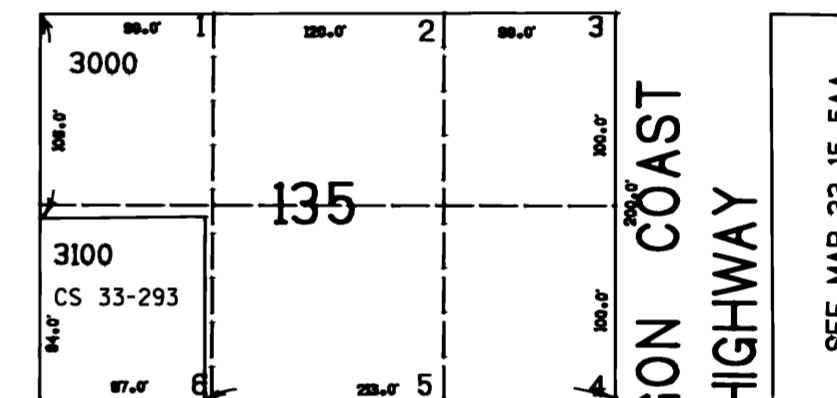
18TH

STREET



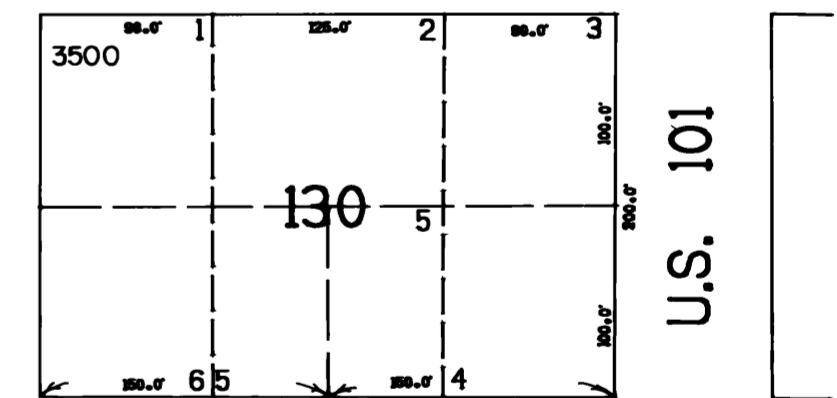
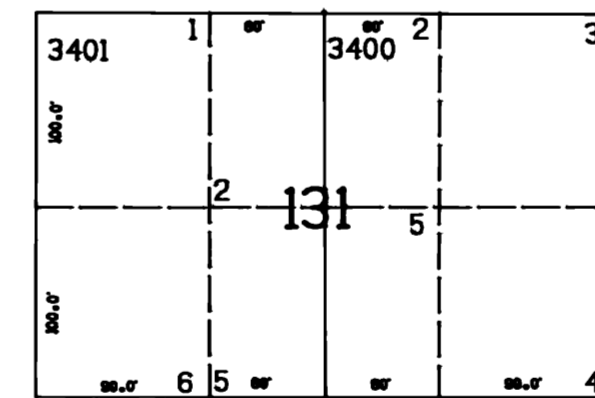
17TH

STREET



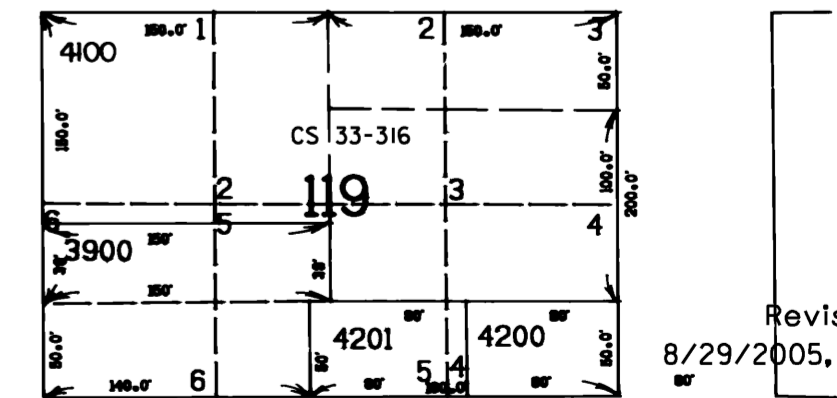
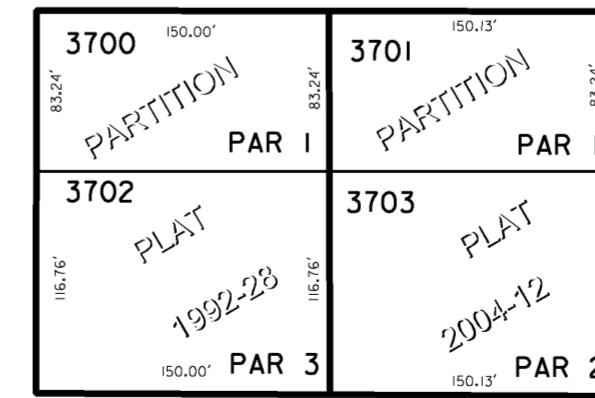
16TH

STREET



15TH

STREET



14TH

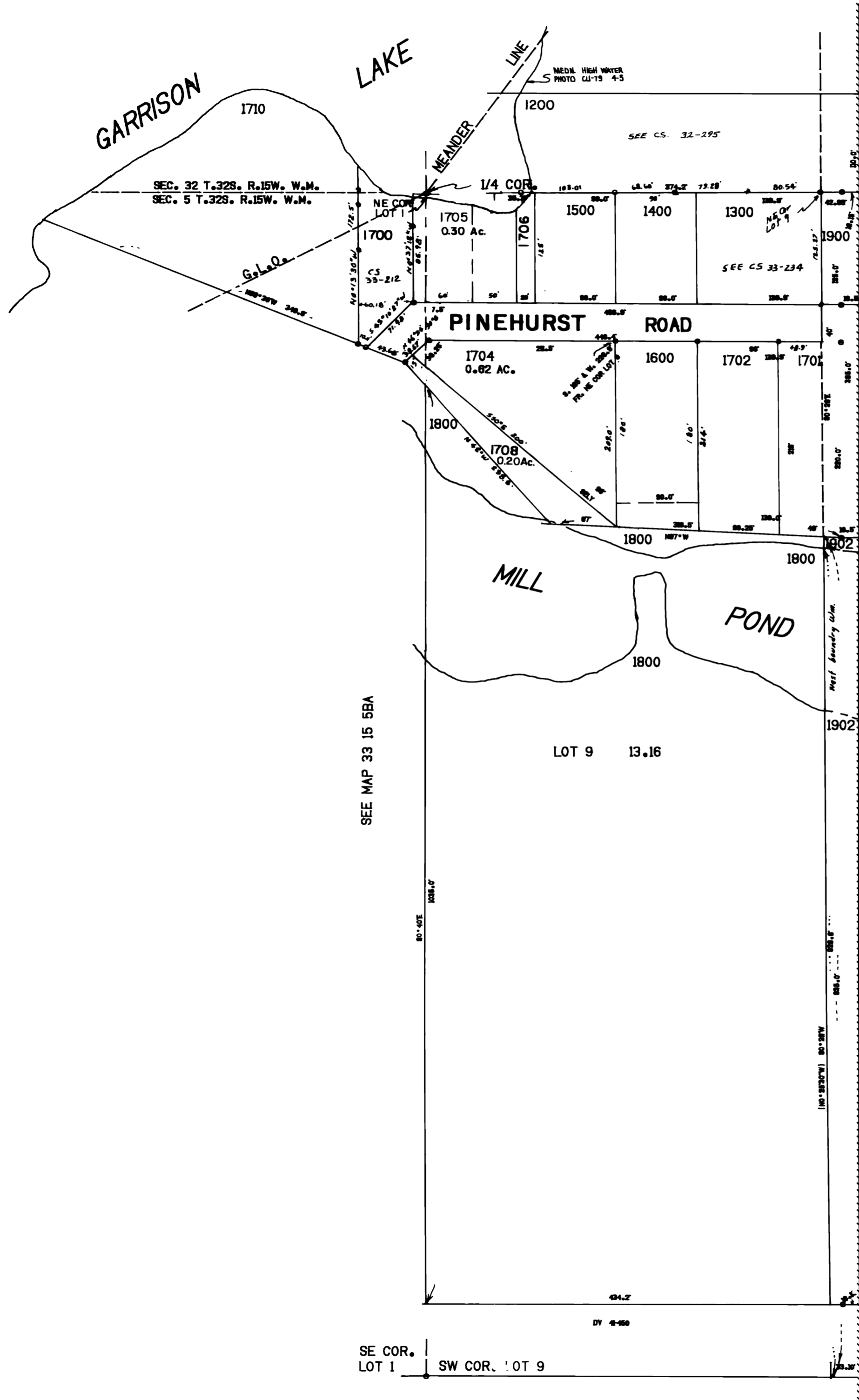
STREET

SEE MAP 33 15 5AC

33 15 5AB
PORT ORFORD

SEE MAP 33 15 5AC

1/16 COR.



SE COR. LOT 1 SW COR. LOT 9

Revised
8/29/2005, 9C