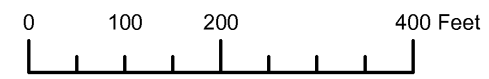


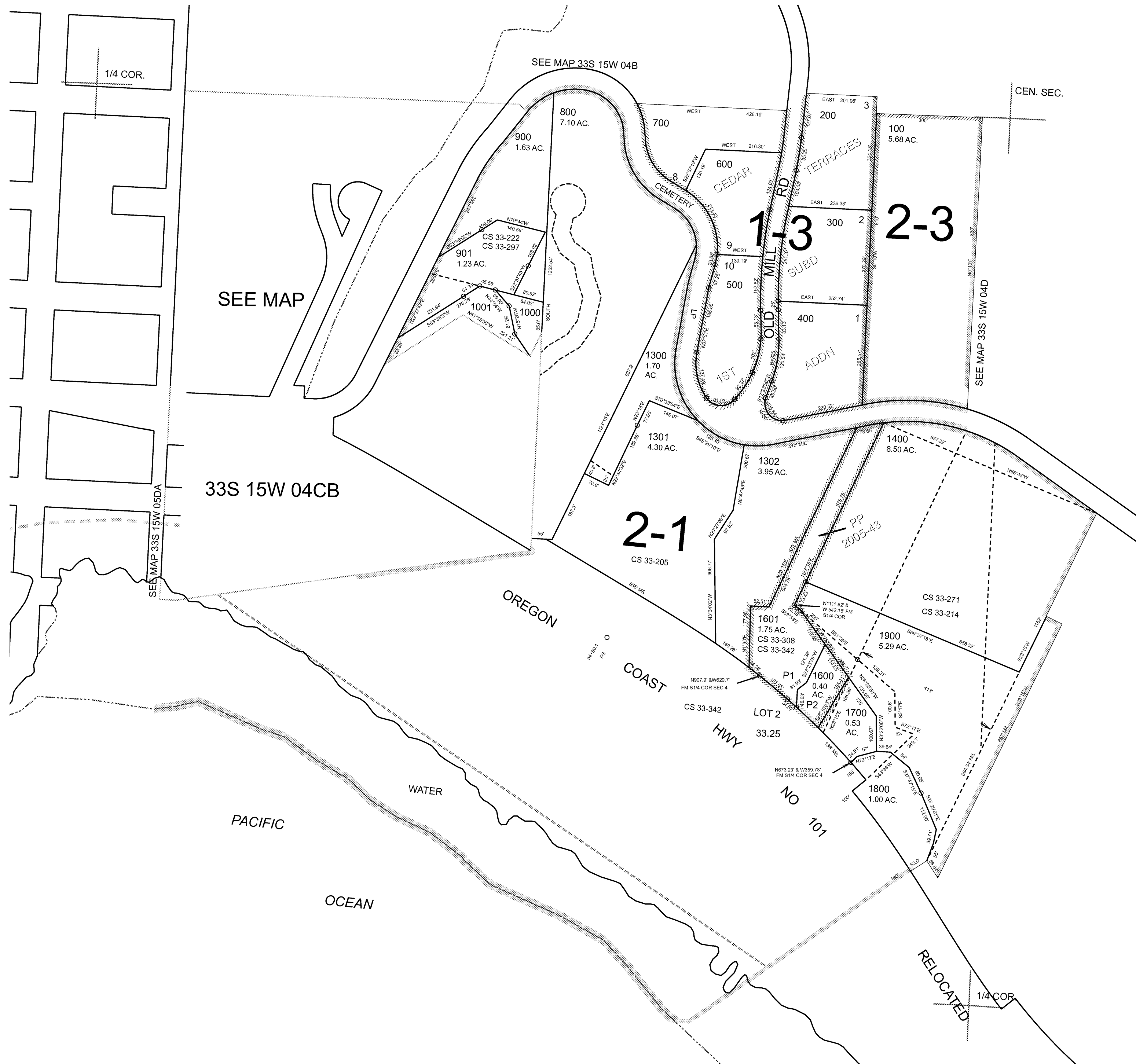
THIS MAP WAS PREPARED FOR ASSESSMENT PURPOSE ONLY



S.W. 1/4 SEC. 4 T. 33S. R. 15W. W.M.  
CURRY COUNTY  
1" = 200'

33S15W04C  
& INDEX

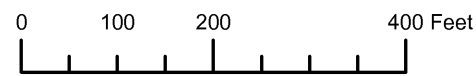
- CANCELLED:
- 1000
- 1002
- 1003
- 1004
- 1005
- 1006
- 1007
- 1100
- 1200
- 1500
- 1701



Revised MRT  
10/08/2008

& INDEX  
33S15W04C

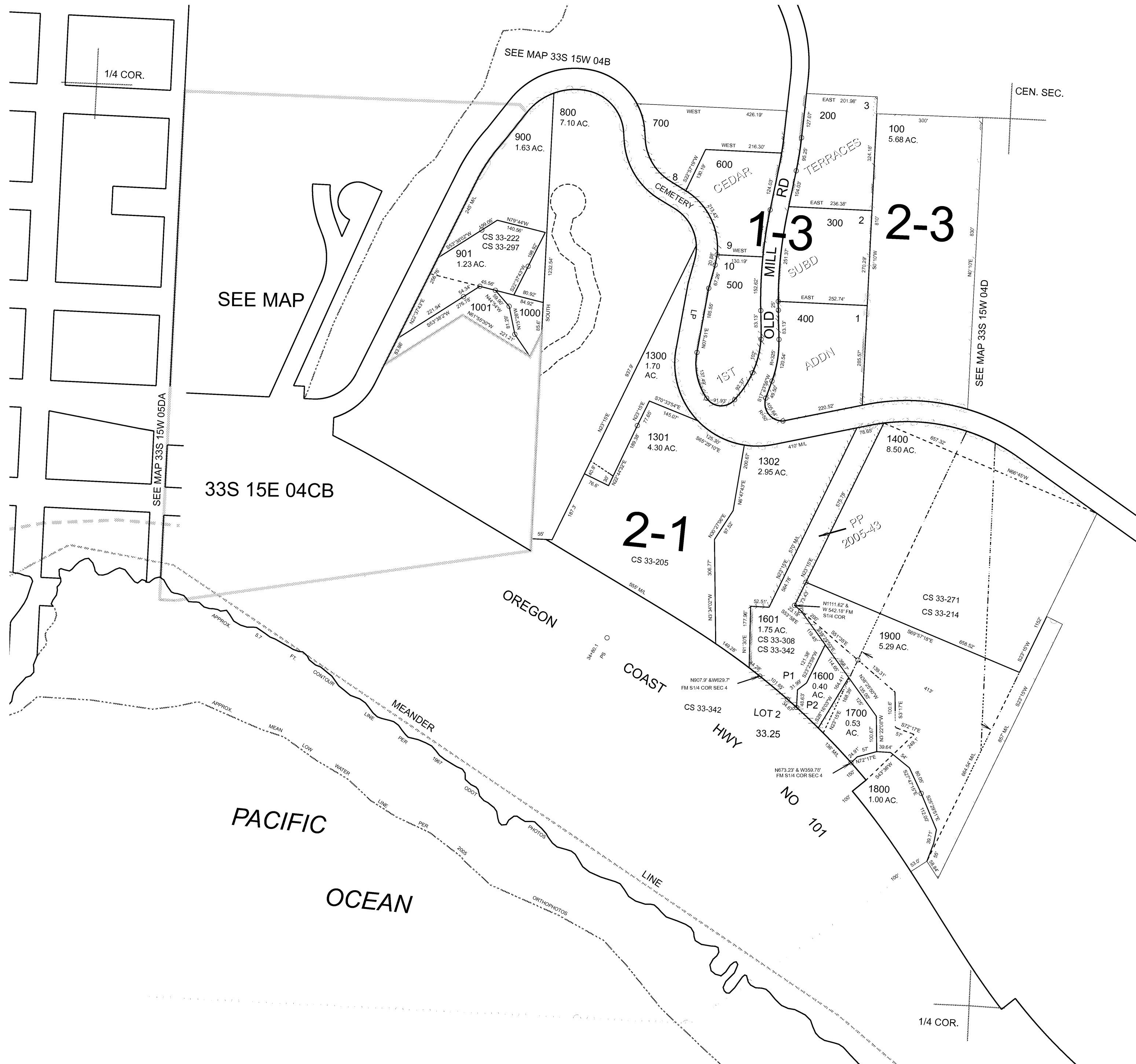
THIS MAP WAS PREPARED FOR  
ASSESSMENT PURPOSE ONLY



S.W.1/4 SEC.4 T.33S. R.15W. W.M.  
CURRY COUNTY  
1" = 200'

33S15W04C  
& INDEX

- CANCELLED:
- 1000
- 1002
- 1003
- 1004
- 1005
- 1006
- 1007
- 1100
- 1200
- 1500
- 1701



Revised RAA  
12/04/2007

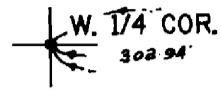
& INDEX  
33S15W04C

THIS MAP WAS PREPARED FOR  
ASSESSMENT PURPOSE ONLY

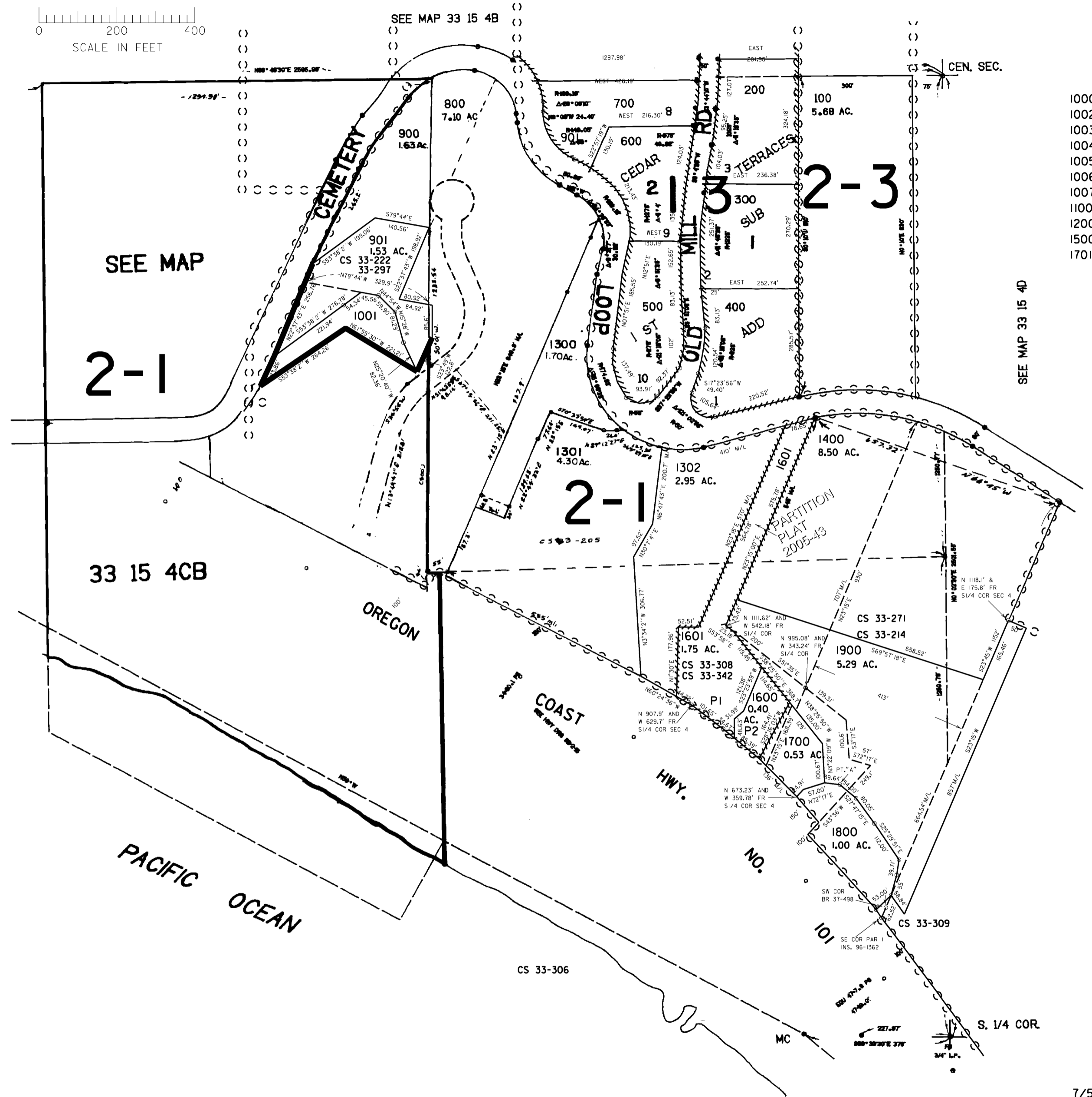
SW1/4 SEC. 4 T.33S. R.15W. W.M.  
CURRY COUNTY

1" = 200'

33 15 4C  
& INDEX



SEE MAP 33 15 5DA



SEE MAP 33 15 4D

- 1000
- 1002
- 1003
- 1004
- 1005
- 1006
- 1007
- 1100
- 1200
- 1500
- 1701

Revised  
7/5/2007, RAA

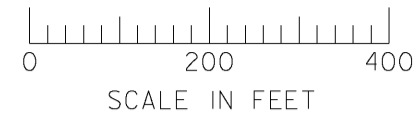
33 15 4C  
& INDEX

THIS MAP WAS PREPARED FOR  
ASSESSMENT PURPOSE ONLY

SW1/4 SEC. 4 T.33S. R.15W. W.M.  
CURRY COUNTY

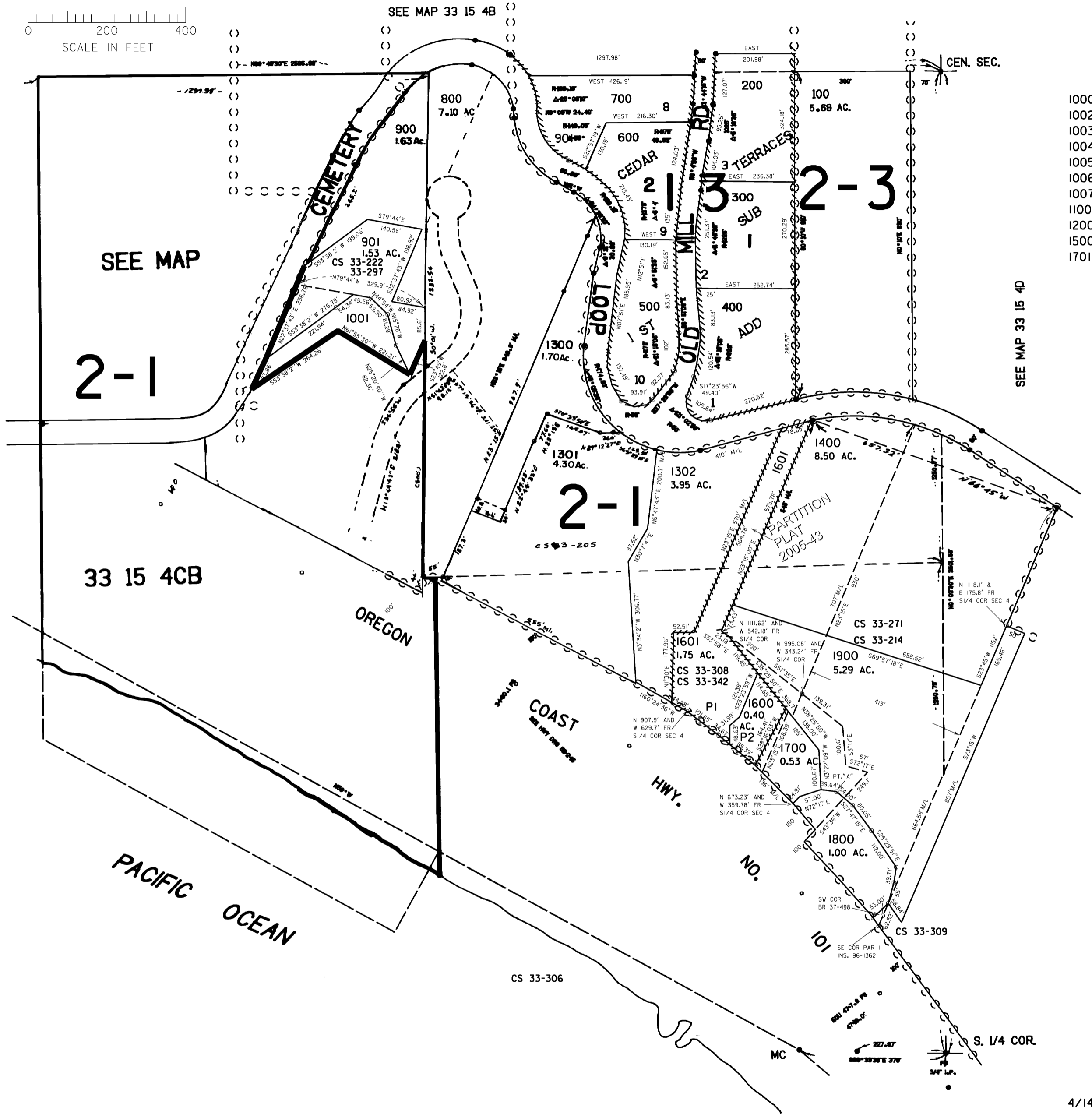
1" = 200'

33 15 4C  
& INDEX



W. 1/4 COR.  
302.94'

SEE MAP 33 15 5DA



SEE MAP 33 15 4D

- 1000
- 1002
- 1003
- 1004
- 1005
- 1006
- 1007
- 1100
- 1200
- 1500
- 1701

Revised  
4/14/2006, DBJ

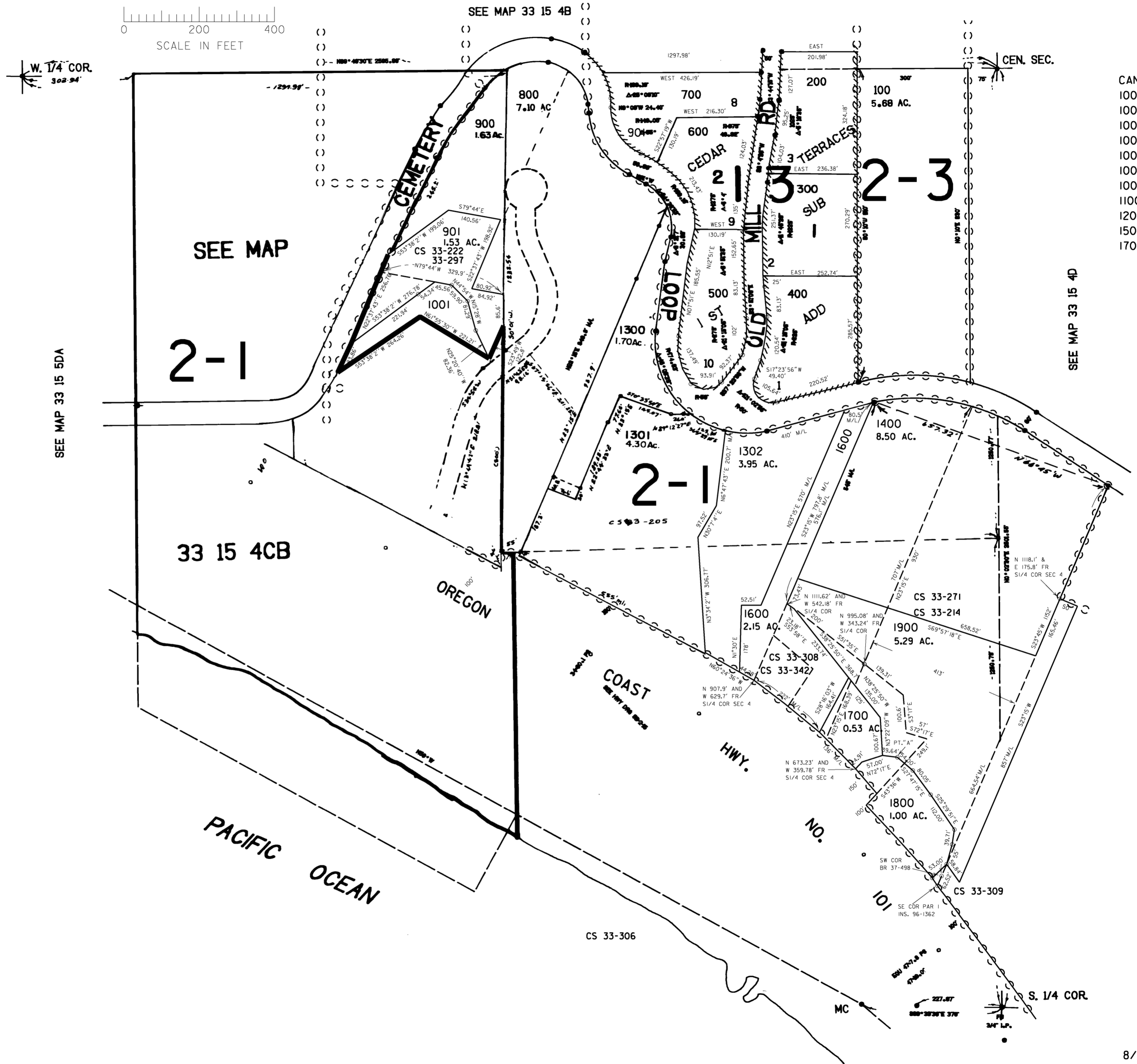
33 15 4C  
& INDEX

THIS MAP WAS PREPARED FOR  
ASSESSMENT PURPOSE ONLY

SW1/4 SEC. 4 T.33S. R.15W. W.M.  
CURRY COUNTY

1" = 200'

33 15 4C  
& INDEX



- CANCELLED NO.
- 1000
  - 1002
  - 1003
  - 1004
  - 1005
  - 1006
  - 1007
  - 1100
  - 1200
  - 1500
  - 1701

Revised  
8/5/2005, DBJ

33 15 4C  
& INDEX