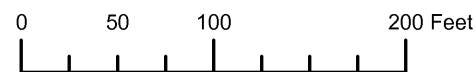
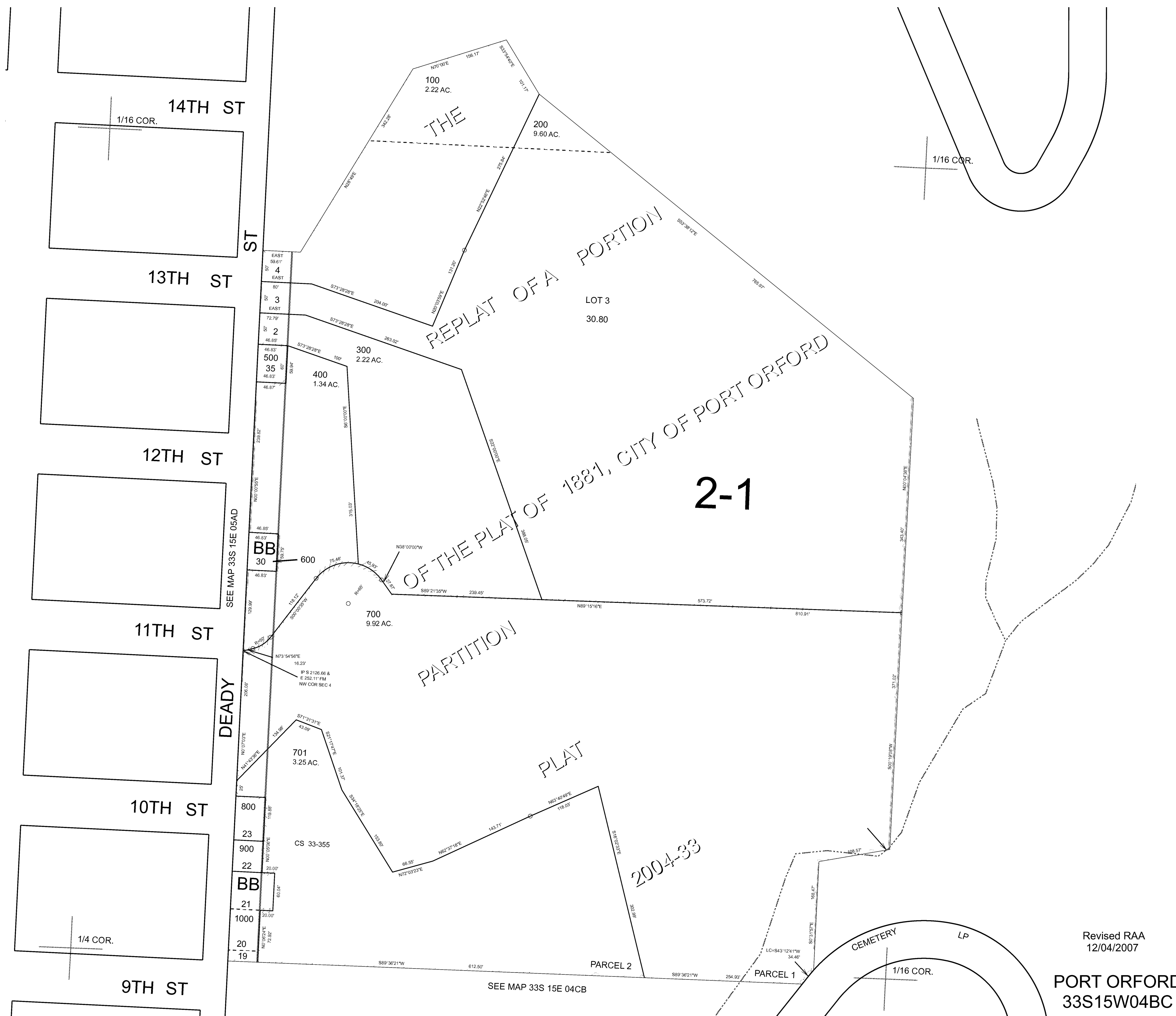


THIS MAP WAS PREPARED FOR ASSESSMENT PURPOSE ONLY



S.W.1/4 N.W.1/4 SEC.4 T.33S. R.15W. W.M.  
CURRY COUNTY  
1" = 100'

33S15W04BC  
PORT ORFORD  
CANCELLED:



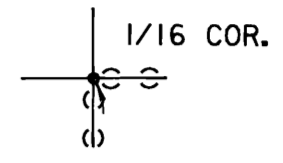
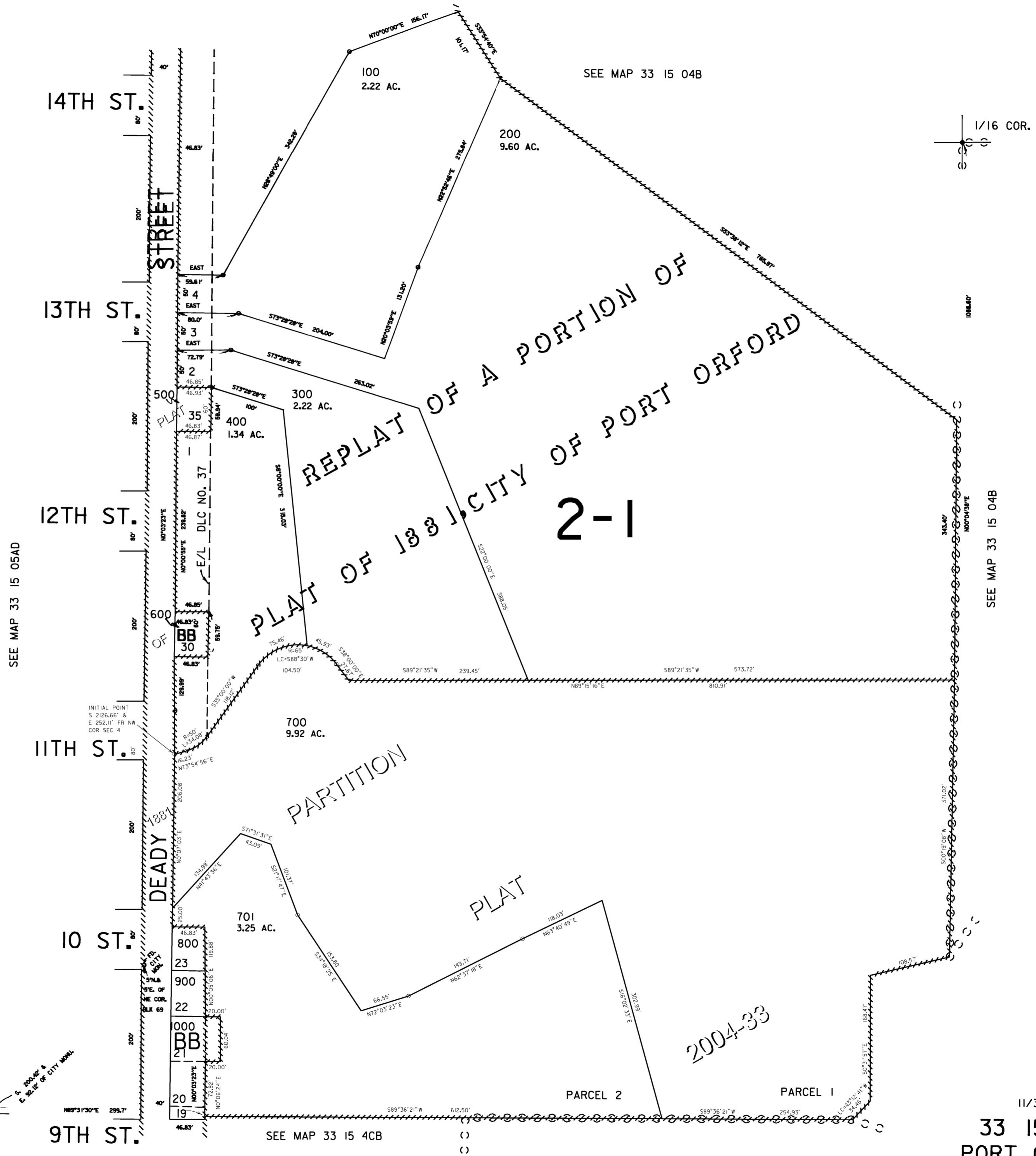
Revised RAA  
12/04/2007  
PORT ORFORD  
33S15W04BC

THIS MAP WAS PREPARED FOR  
ASSESSMENT PURPOSE ONLY

SW 1/4NW 1/4 SEC.04 T.33S. R.15W. W.M.  
CURRY COUNTY

33 15 04BC  
PORT ORFORD

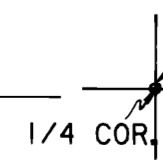
1" = 100'



SEE MAP 33 15 05AD

SEE MAP 33 15 04B

SEE MAP 33 15 4CB



Revised  
11/3/2004, DBJ  
33 15 04BC  
PORT ORFORD