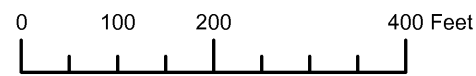


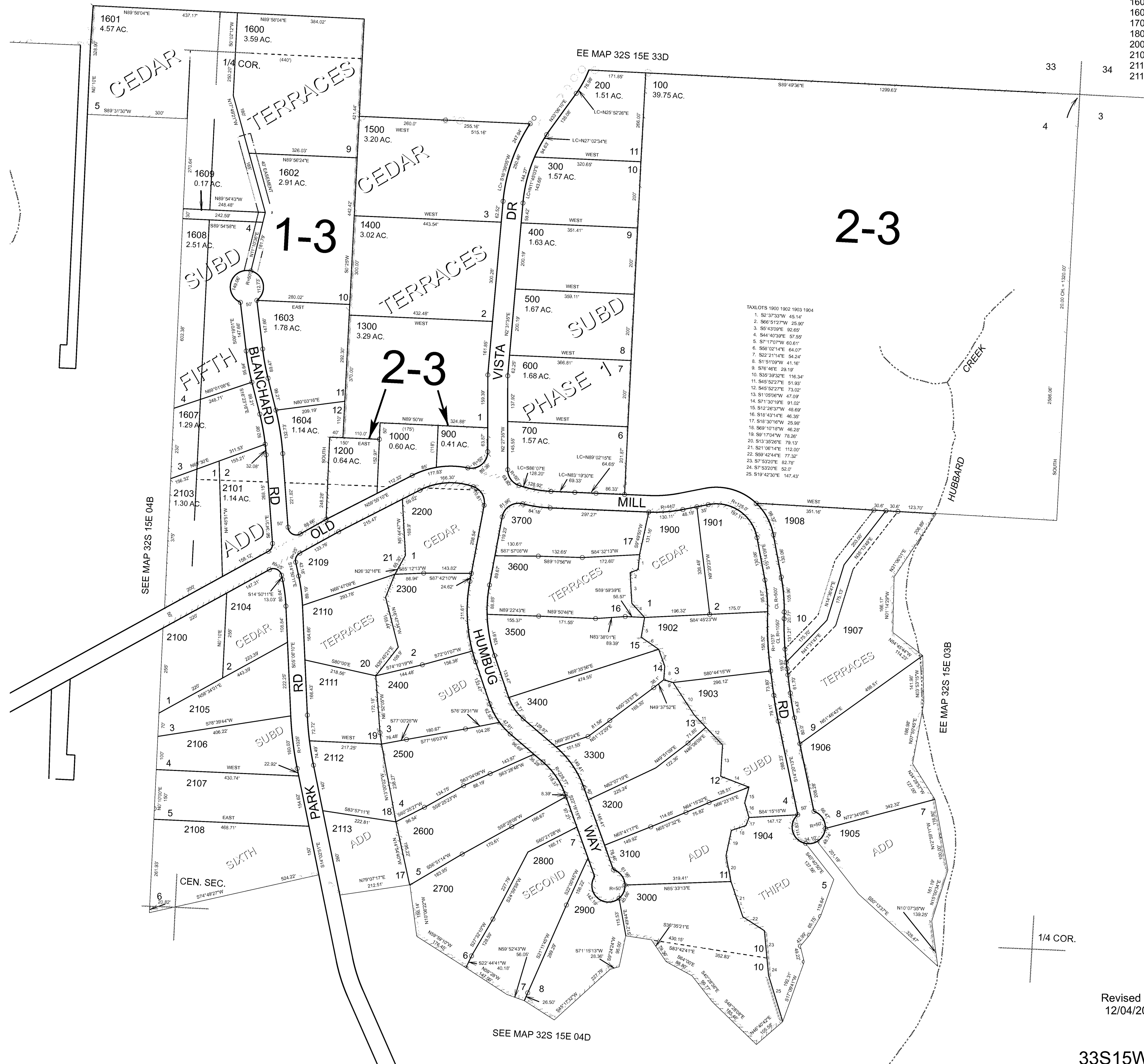
THIS MAP WAS PREPARED FOR ASSESSMENT PURPOSE ONLY



N.E. 1/4 SEC. 4 T.33S. R.15W. W.M. CURRY COUNTY 1" = 200'

33S15W04A

CANCELLED: 800, 1100, 1605, 1606, 1700, 1800, 2000, 2102, 2114, 2115



TAXLOTS 1900 1902 1903 1904

1. S2°37'33"W 45.14'
2. S86°51'27"W 25.90'
3. S5°43'09"E 92.80'
4. S44°40'39"E 57.55'
5. S7°17'07"W 60.61'
6. S88°02'14"E 64.07'
7. S22°21'14"E 54.24'
8. S1°51'09"W 41.16'
9. S76°48'E 29.19'
10. S39°39'32"E 116.34'
11. S45°52'27"E 51.93'
12. S45°52'27"E 73.02'
13. S1°50'06"W 47.09'
14. S71°33'01"E 91.52'
15. S12°26'37"W 48.69'
16. S18°43'14"E 46.35'
17. S18°30'16"W 25.98'
18. S69°10'19"W 46.28'
19. S9°17'04"W 78.26'
20. S13°35'26"E 79.13'
21. S21°06'14"E 112.00'
22. S99°42'44"E 77.32'
23. S7°53'20"E 82.78'
24. S7°53'20"E 52.0'
25. S19°42'30"E 147.43'

SEE MAP 32S 15E 04D

Revised RAA 12/04/2007

33S15W04A

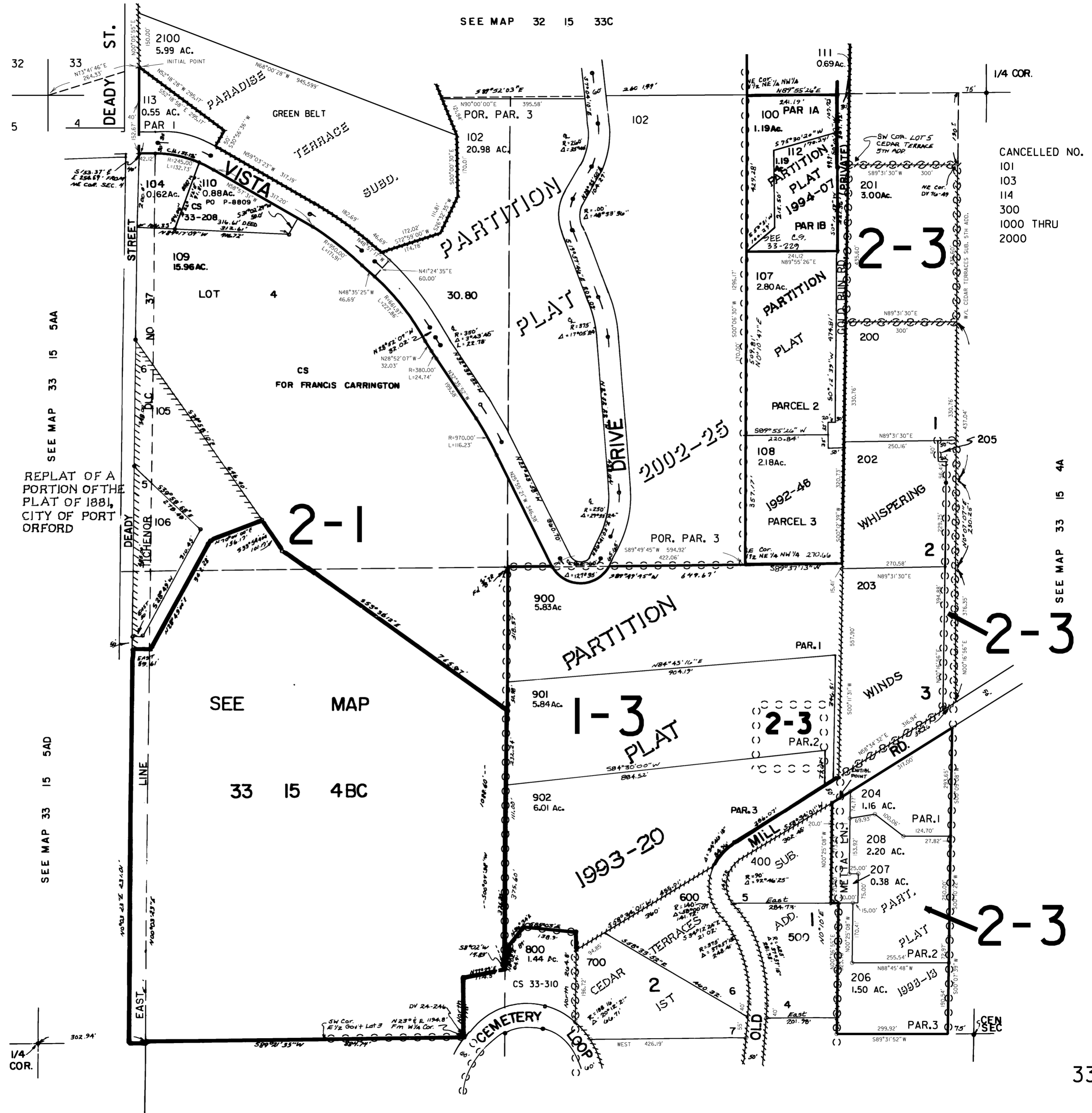
THIS MAP WAS PREPARED FOR
ASSESSMENT PURPOSE ONLY

NW1/4 SEC. 4 T.33S. R.15 W. W.M.
CURRY COUNTY

33 15 04B

1" = 200'

SEE MAP 32 15 33C



CANCELLED NO.
 101
 103
 114
 300
 1000 THRU
 2000

SEE MAP 33 15 5AA

REPLAT OF A
 PORTION OF THE
 PLAT OF 1881,
 CITY OF PORT
 ORFORD

SEE MAP 33 15 5AD

SEE MAP
 33 15 4BC

SEE MAP 33 15 4A

SEE MAP 33 15 4C