

THIS MAP WAS PREPARED FOR
ASSESSMENT PURPOSE ONLY

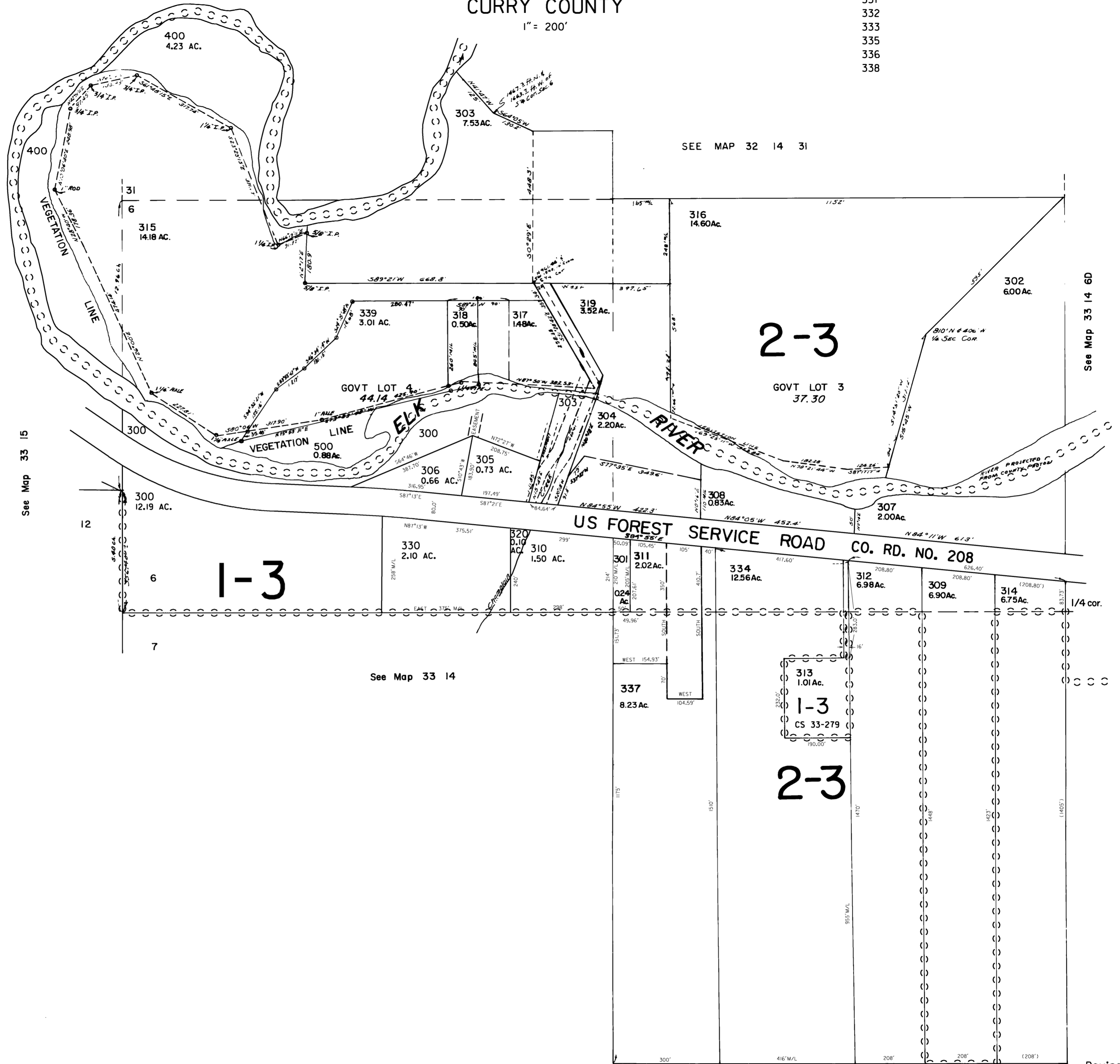
LOTS 3 & 4 SEC. 6 AND
NE1/4NW1/4 SEC 7 T.33S. R.14.W W.M.
CURRY COUNTY

1" = 200'

CANCELLED NO.

33 14 6C

- 331
- 332
- 333
- 335
- 336
- 338



See Map 33 14 6D

See Map 33 15

See Map 33 14

Revised
8/16/2004, CS

33 14 6C

REVISED 8-22-96, 9C