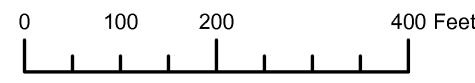
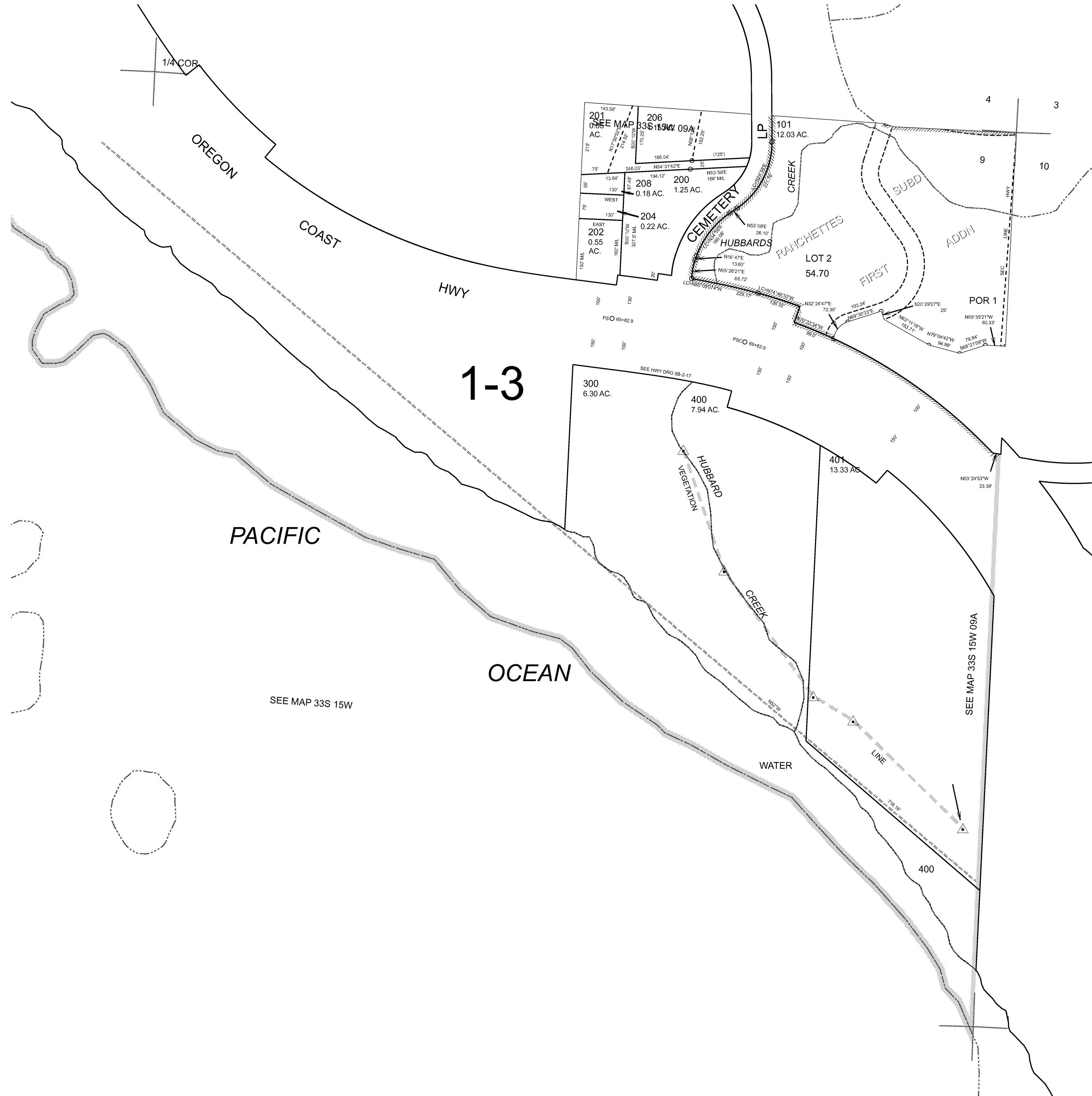


THIS MAP WAS PREPARED FOR  
ASSESSMENT PURPOSE ONLY

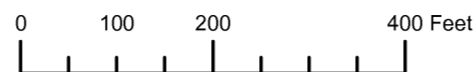


CANCELLED:  
207  
100U1  
100U2  
100  
203  
205



Revised: 9C  
8/28/2008

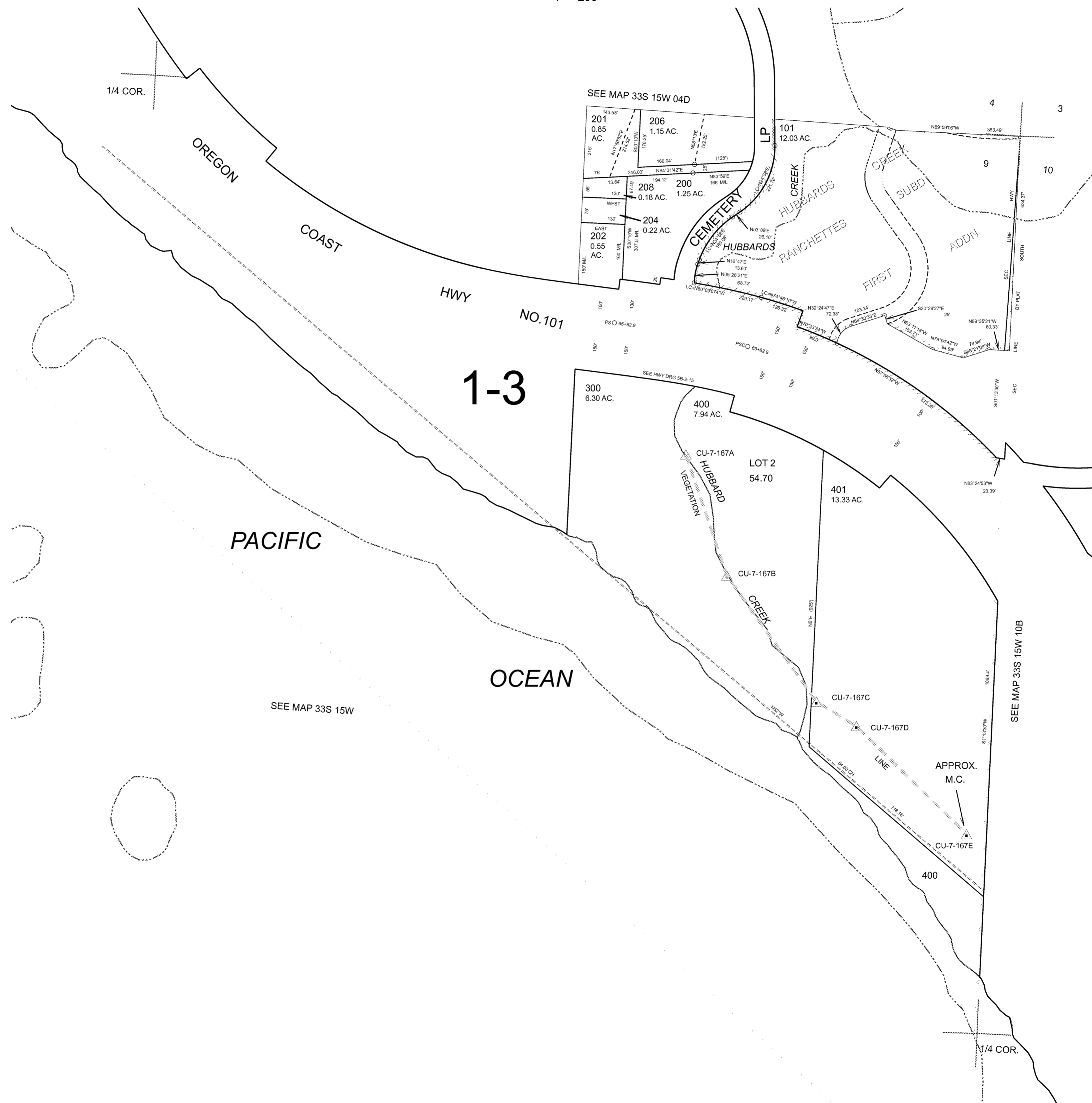
THIS MAP WAS PREPARED FOR ASSESSMENT PURPOSE ONLY



N.E. 1/4 SEC. 9 T. 33S. R. 15W. W.M.  
CURRY COUNTY  
1" = 200'

33S15W09A

CANCELLED:  
207  
100U1  
100U2  
100  
203  
205



Revised RAA  
12/04/2007

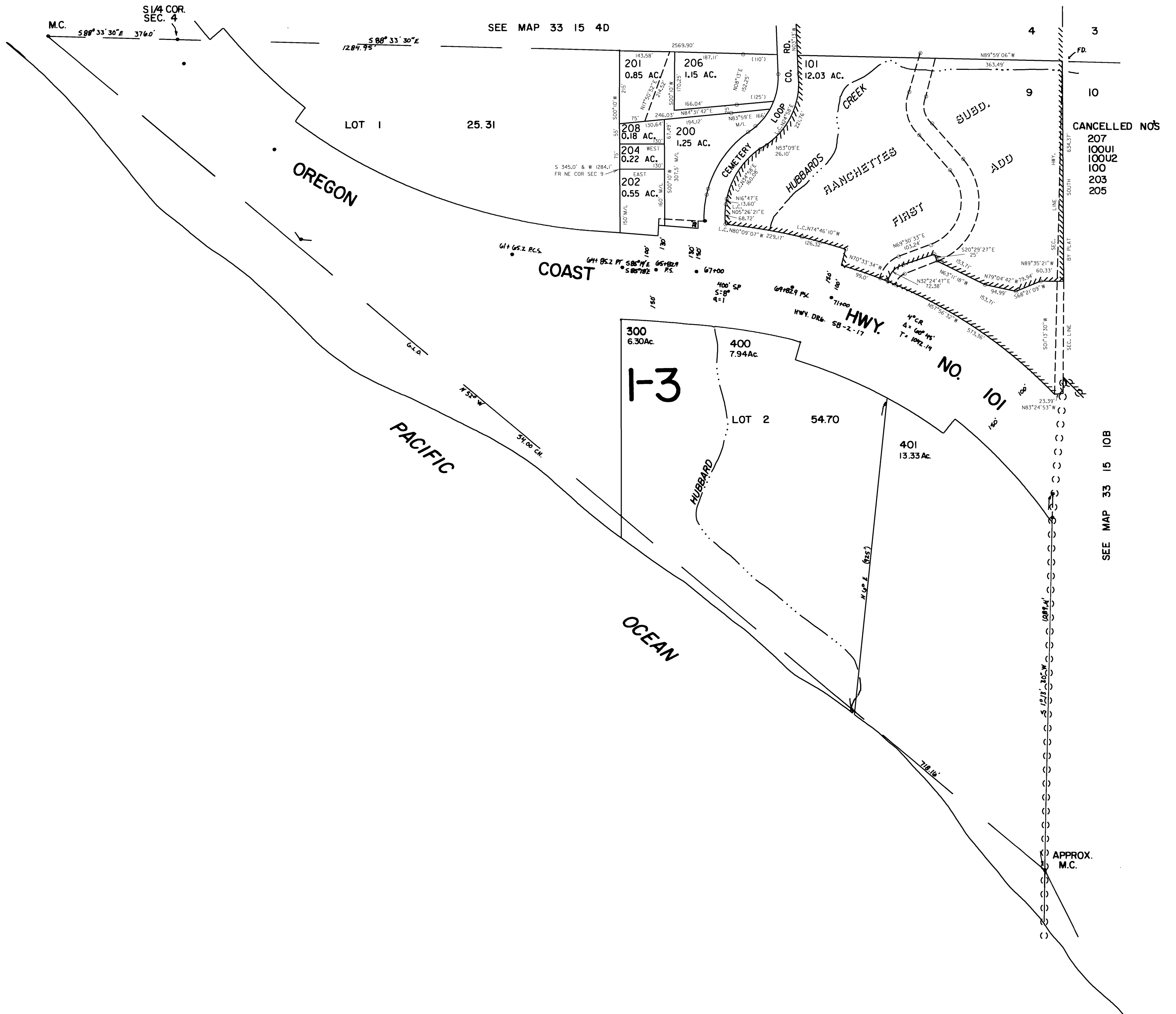
33S15W09A

THIS MAP WAS PREPARED FOR  
ASSESSMENT PURPOSE ONLY

NE 1/4 SEC. 9 T.33S. R.15W. W.M.  
CURRY COUNTY

33 15 9A

1" = 200'



CANCELLED NOS  
207  
100U1  
100U2  
100  
203  
205

SEE MAP 33 15 10B

REVISED 4-13-98, JD

33 15 9A