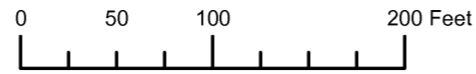
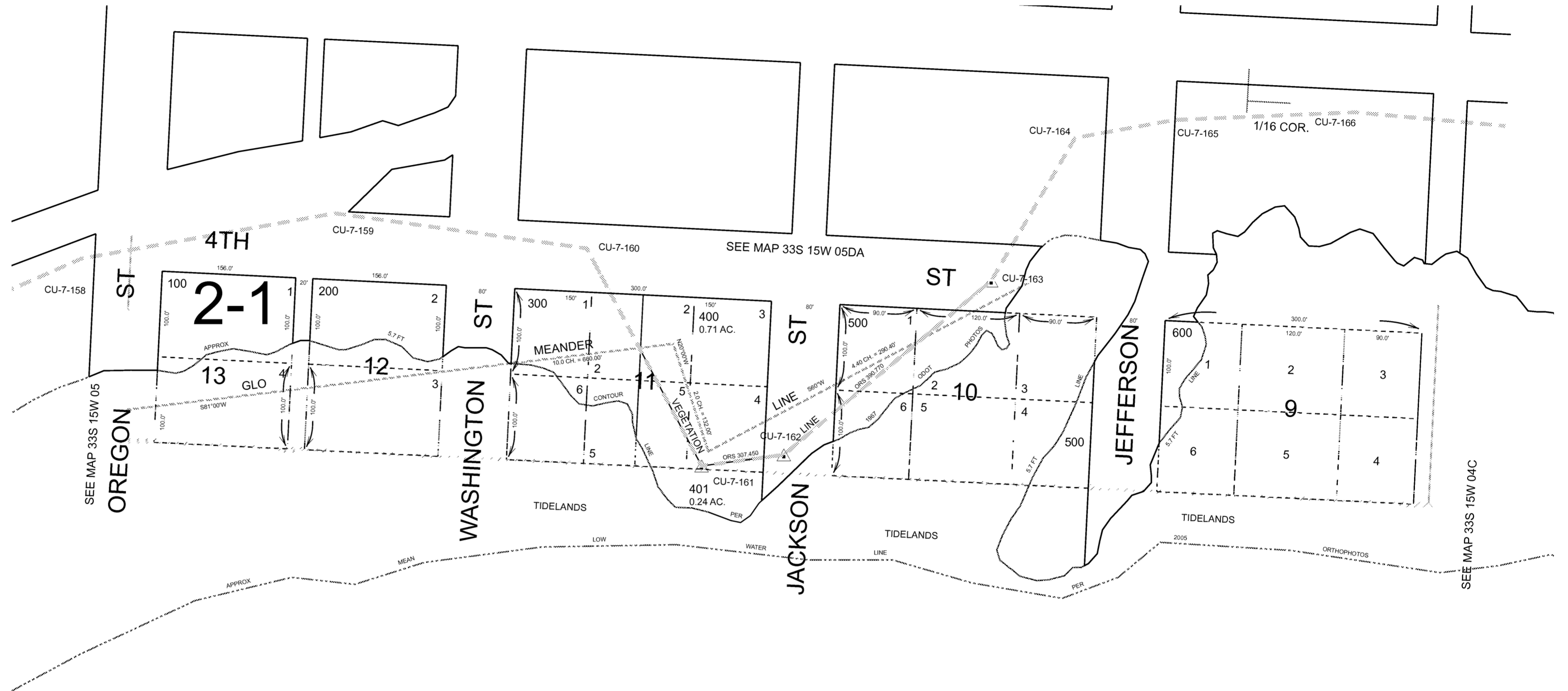


THIS MAP WAS PREPARED FOR ASSESSMENT PURPOSE ONLY



S.E. 1/4 S.E. 1/4 SEC. 5 T. 33S. R. 15W. W.M.
CURRY COUNTY
1" = 100'

33S15W05DD
PORT ORFORD
CANCELLED:



THIS MAP WAS PREPARED FOR
ASSESSMENT PURPOSE ONLY

SE1/4 SE1/4 SEC. 5 T.33S. R.15W. W.M.
CURRY COUNTY

33 15 5DD
PORT ORFORD

1"=100'

