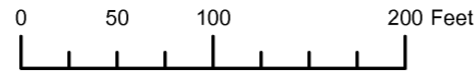


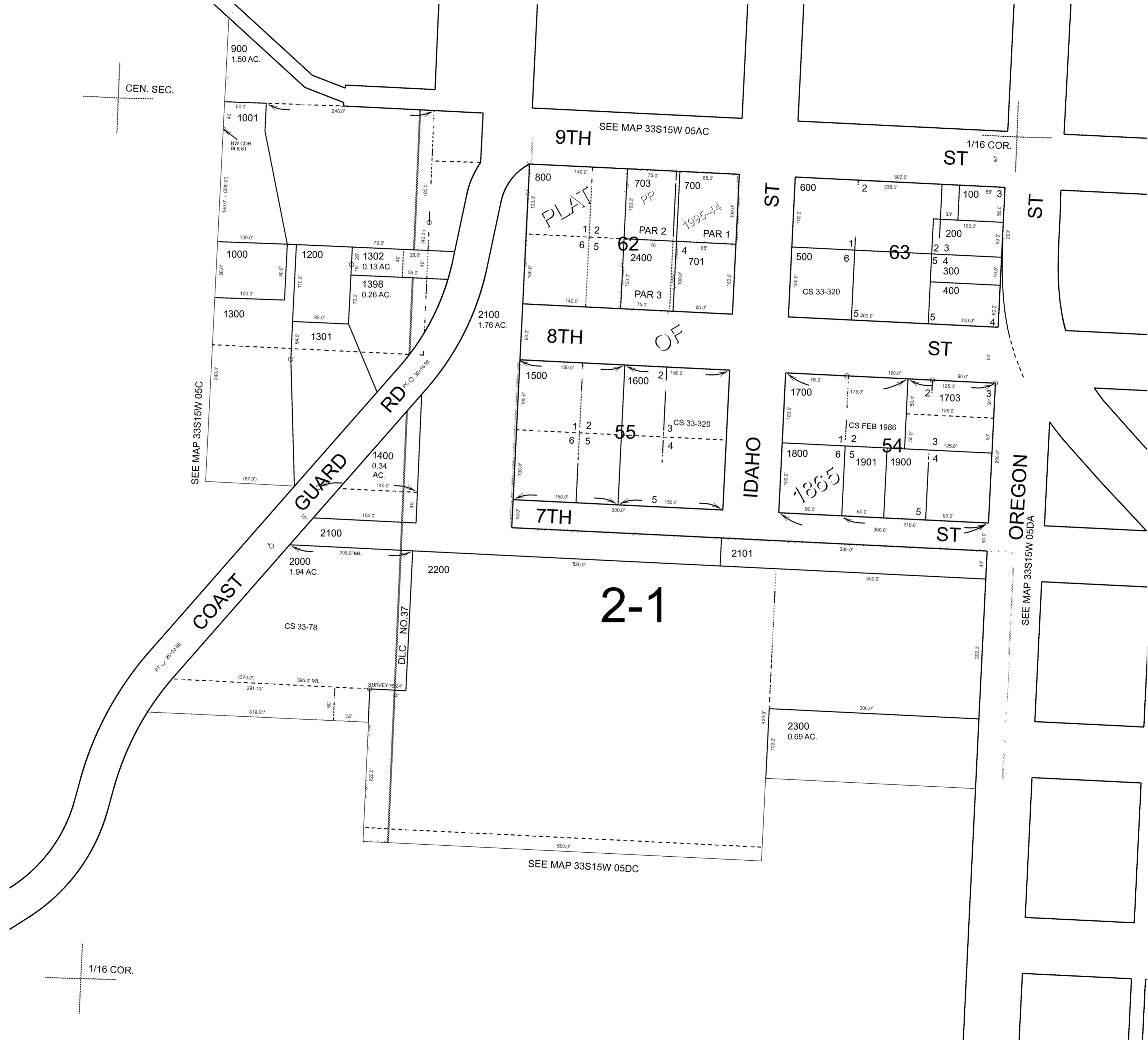
THIS MAP WAS PREPARED FOR ASSESSMENT PURPOSE ONLY



N.W.1/4 S.E.1/4 SEC.5 T.33S. R.15W. W.M.  
CURRY COUNTY  
1" = 100'

33S15W05DB  
PORT ORFORD

- CANCELLED:
- 702
  - 1100
  - 1396
  - 1397
  - 1399
  - 1701
  - 1702
  - 1704
  - 2102 THRU 2105
  - 2301



THIS MAP WAS PREPARED FOR  
ASSESSMENT PURPOSE ONLY

NW1/4 SE1/4 SEC. 5 T.33S R.15W. W.M.  
CURRY COUNTY

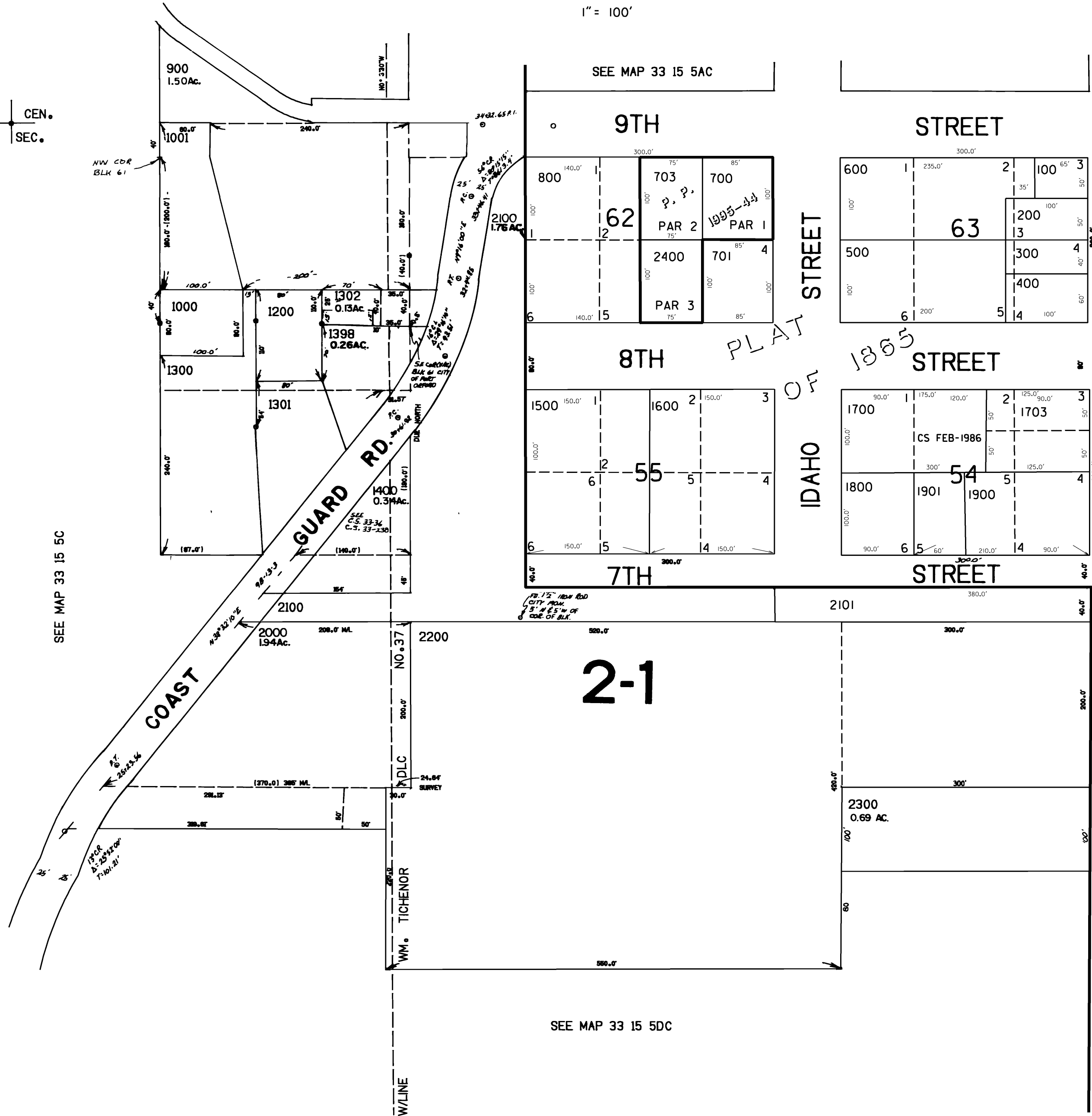
33 15 5DB  
PORT ORFORD

1" = 100'

CEN.  
SEC.

NW COR  
BLK 61

SEE MAP 33 15 5C



APPROX.  
1/16 COR.

CANCELLED NO.  
702  
1100  
1396  
1397  
1399  
1701  
1702  
1704  
2102 THRU  
2105  
2301

SEE MAP 33 15 5DA

APPROX.  
1/16 COR.

APPROX.  
1/16 COR. Revised 5/23/00. CS

33 15 5DB  
PORT ORFORD