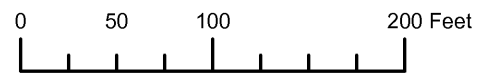


THIS MAP WAS PREPARED FOR ASSESSMENT PURPOSE ONLY

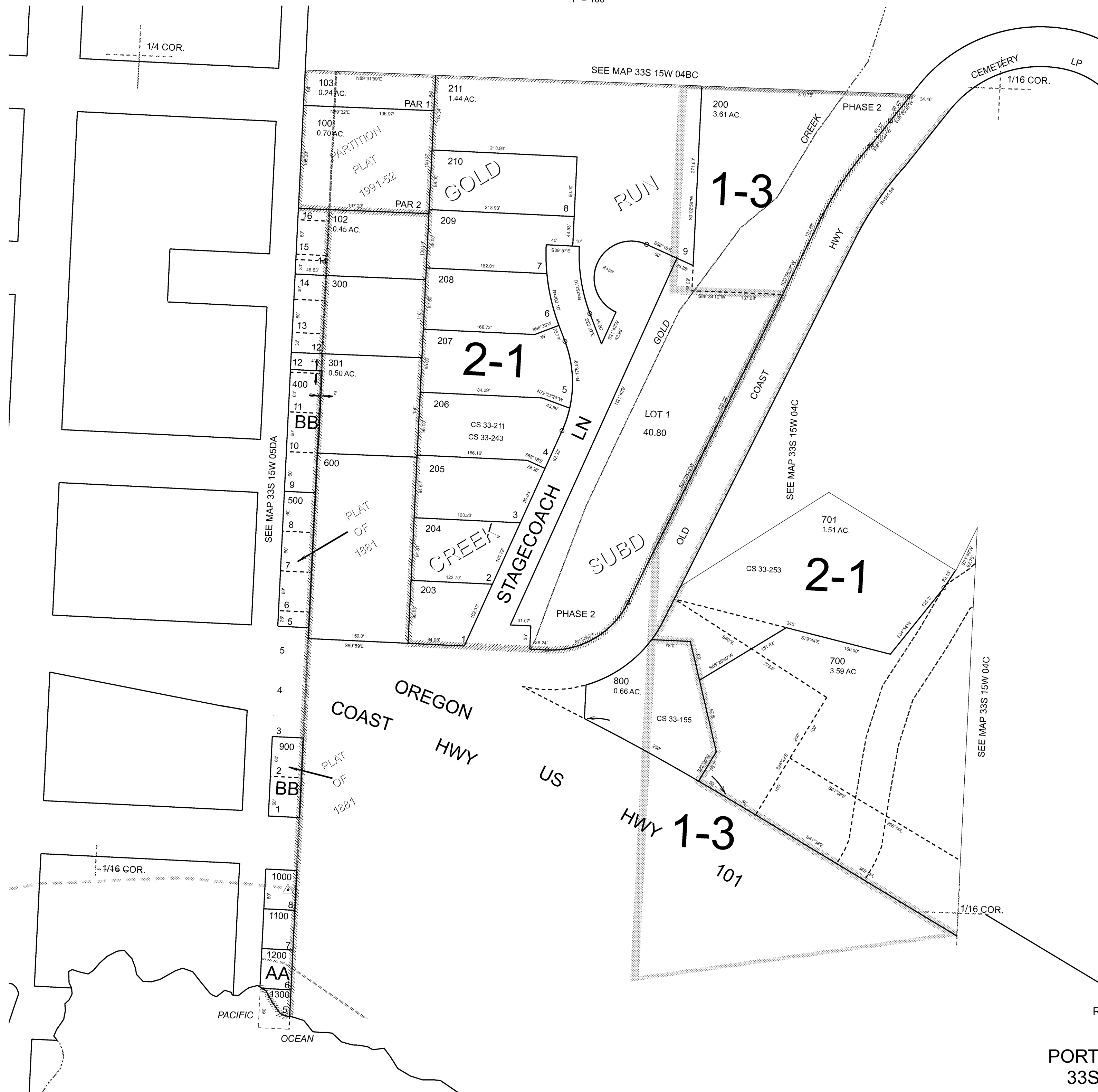


N.W. 1/4 S.W. 1/4 SEC. 4 T. 33S. R. 15W. W.M. CURRY COUNTY

1" = 100'

33S15W04CB PORT ORFORD

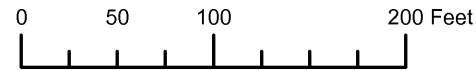
CANCELLED:
101
201
302
303



Revised: RAA 3/11/2009

PORT ORFORD 33S15W04CB

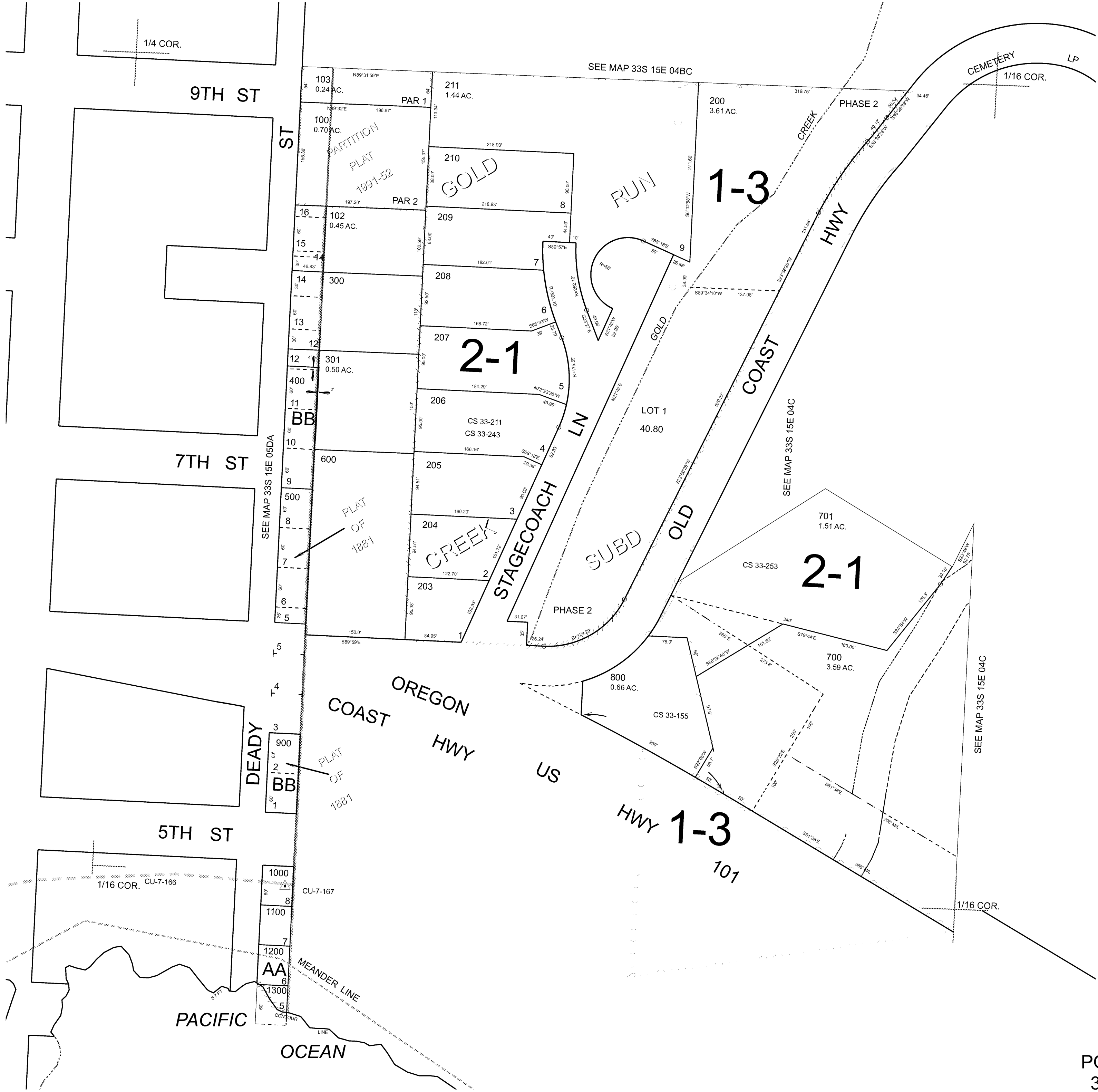
THIS MAP WAS PREPARED FOR ASSESSMENT PURPOSE ONLY



N.W.1/4 S.W.1/4 SEC.4 T.33S. R.15W. W.M.
CURRY COUNTY
1" = 100'

33S15W04CB
PORT ORFORD

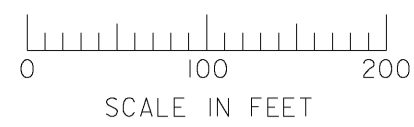
CANCELLED:
101
201
202
302
303



Revised RAA
12/04/2007

PORT ORFORD
33S15W04CB

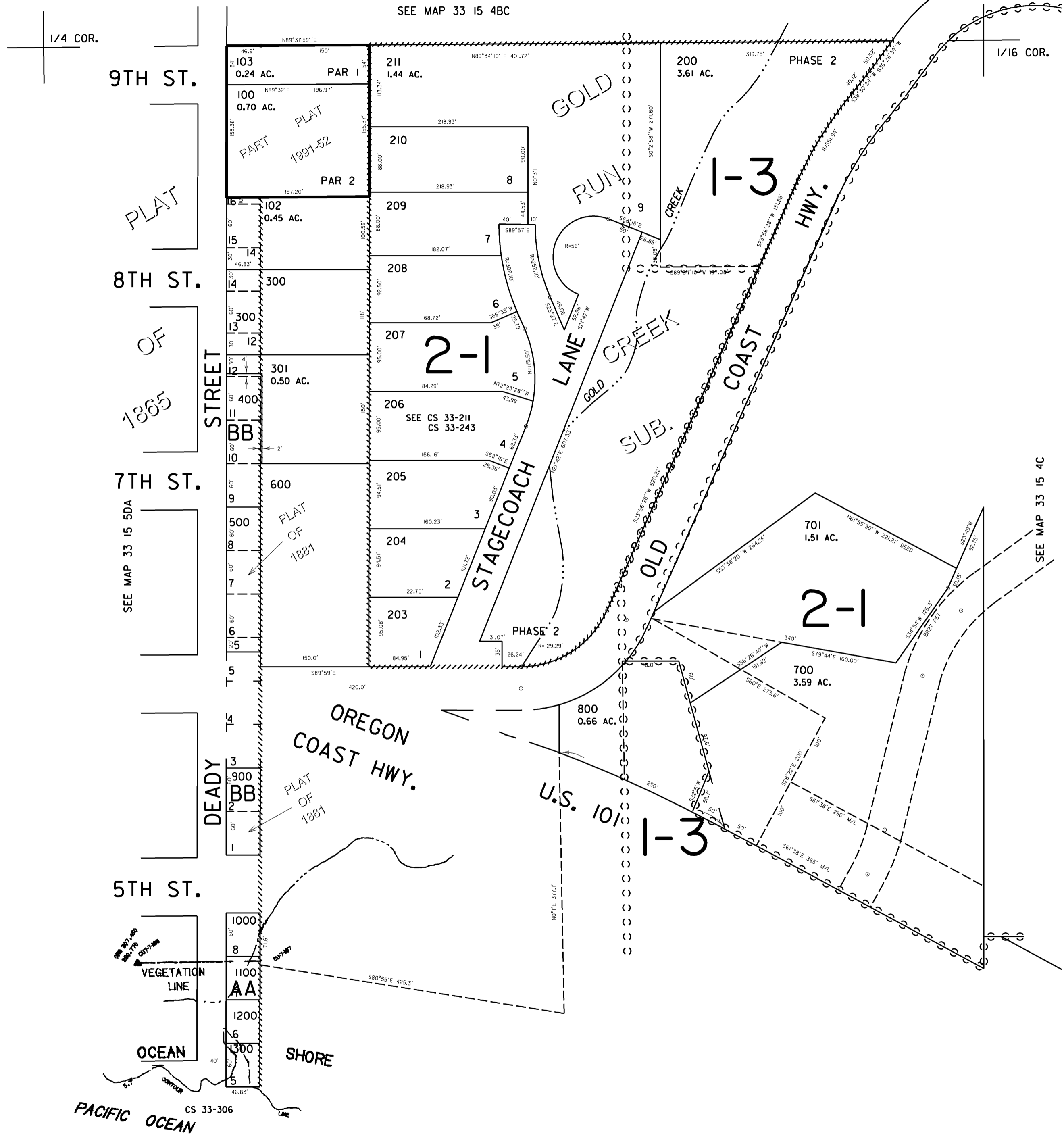
THIS MAP WAS PREPARED FOR
ASSESSMENT PURPOSE ONLY



NW1/4 SW1/4 SEC.4 T.33S. R.15W. W.M.
CURRY COUNTY

1" = 100'

33 15 04CB
PORT ORFORD



CANCELLED NO.
101
201
202
302
303

Revised
7/5/2007, RAA
33 15 04CB
PORT ORFORD

