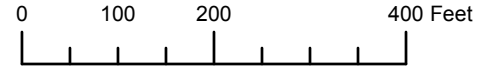


THIS MAP WAS PREPARED FOR ASSESSMENT PURPOSE ONLY

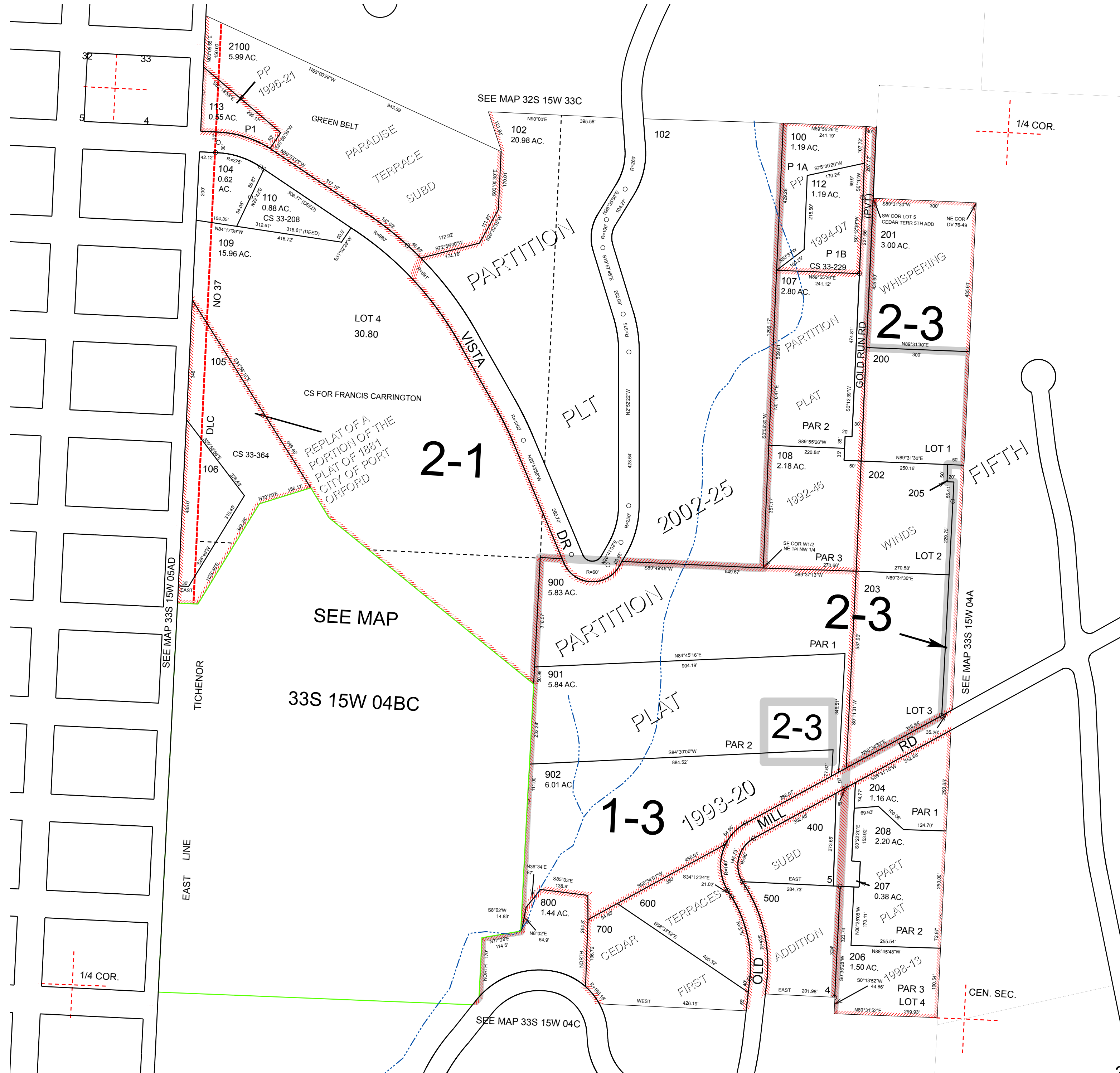


N.W. 1/4 SEC. 4 T. 33S. R. 15W. W.M. CURRY COUNTY

1" = 200'

33S15W04B & INDEX

CANCELLED: 101, 103, 114, 300, 1000 THRU 2000



2-1

2-3

2-3

2-3

1-3

1/4 COR.

1/4 COR.

CEN. SEC.

Revised: RAA 6/17/2010

& INDEX 33S15W04B

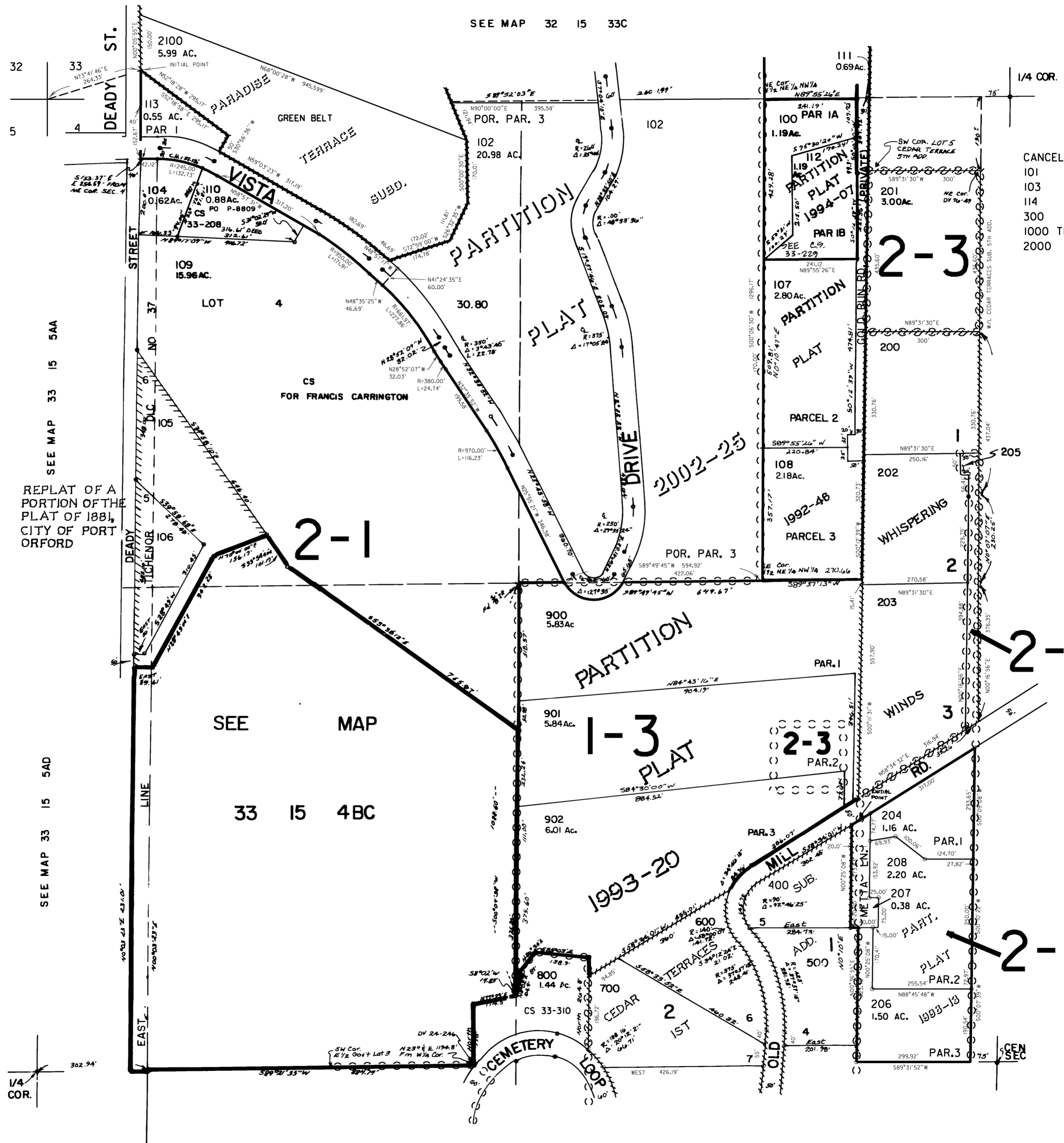
THIS MAP WAS PREPARED FOR
ASSESSMENT PURPOSE ONLY

NW1/4 SEC. 4 T.33S. R.15 W. W.M.
CURRY COUNTY

33 15 04B

1" = 200'

SEE MAP 32 15 33C



CANCELLED NO.
101
103
114
300
1000 THRU
2000

SEE MAP 33 15 5AA

REPLAT OF A
PORTION OF THE
PLAT OF 1881,
CITY OF PORT
ORFORD

SEE MAP 33 15 5AD

SEE MAP
33 15 4BC

SEE MAP 33 15 4C

SEE MAP 33 15 4A