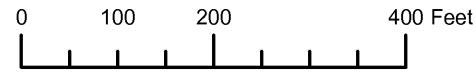


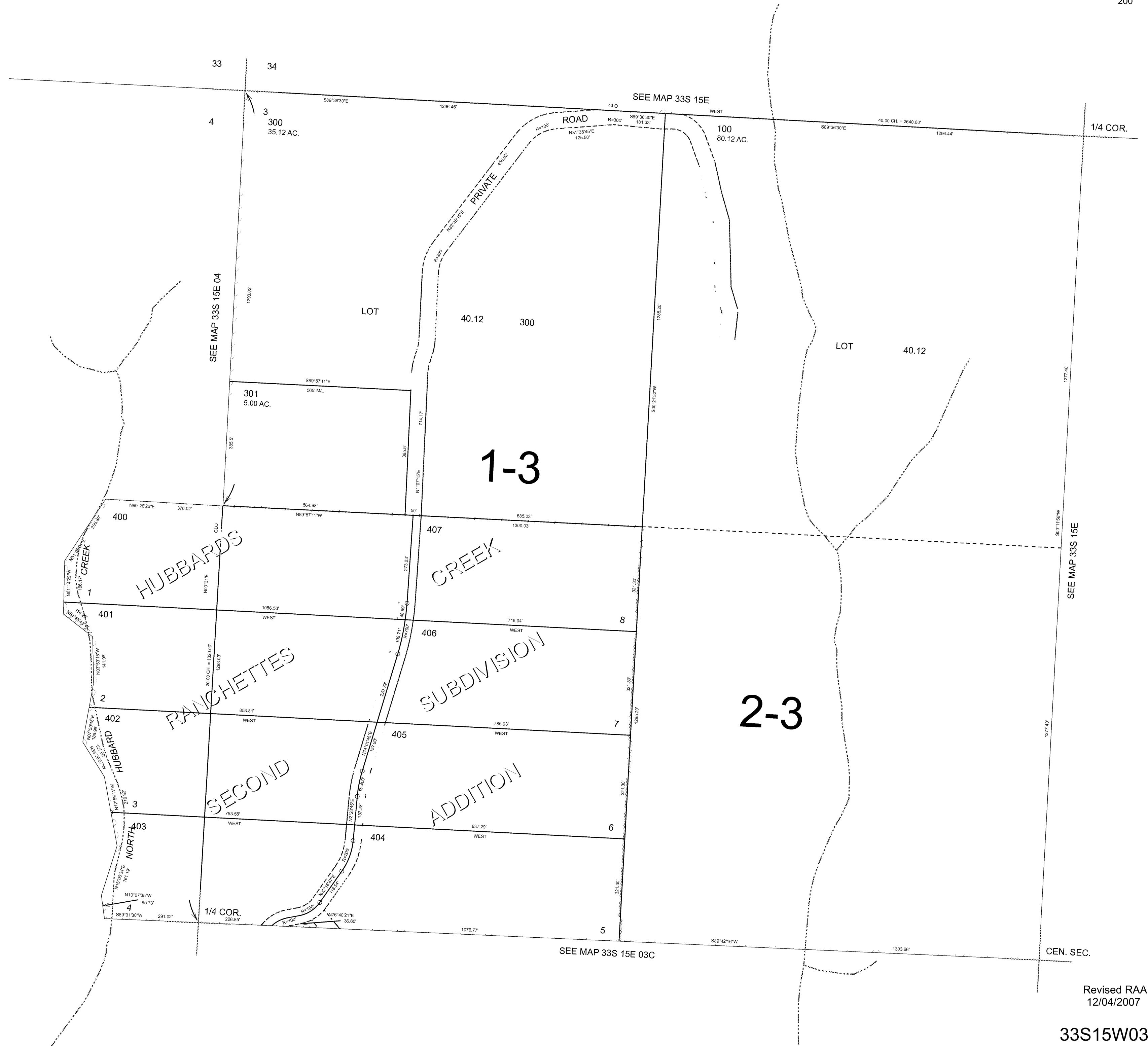
THIS MAP WAS PREPARED FOR ASSESSMENT PURPOSE ONLY



N.W. 1/4 SEC. 3 T. 33S. R. 15W. W.M.
CURRY COUNTY
1" = 200'

33S15W03B

CANCELLED:
200



CEN. SEC.

Revised RAA
12/04/2007

33S15W03B

