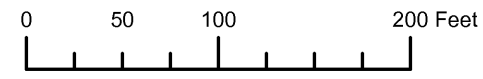


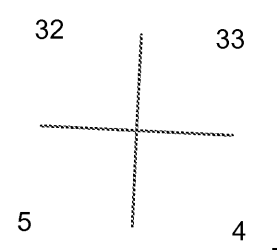
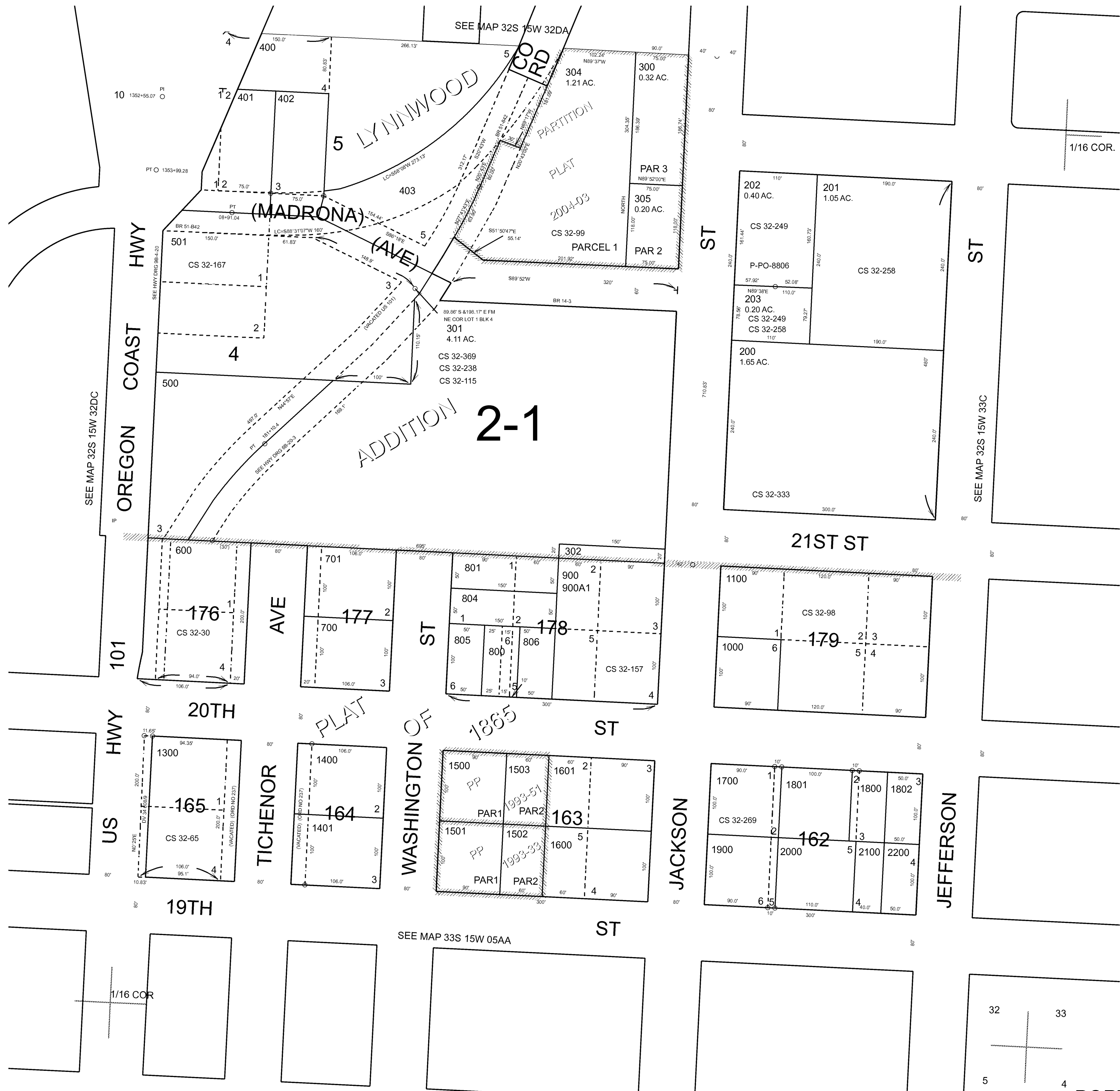
THIS MAP WAS PREPARED FOR ASSESSMENT PURPOSE ONLY



S.E.1/4 S.E.1/4 SEC.32 T.32S. R.15W. W.M.
CURRY COUNTY
1" = 100'

32S15W32DD
PORT ORFORD

- CANCELLED:
- 100
 - 303
 - 802
 - 803
 - 1200
 - 1810
 - 2300 THRU 2900



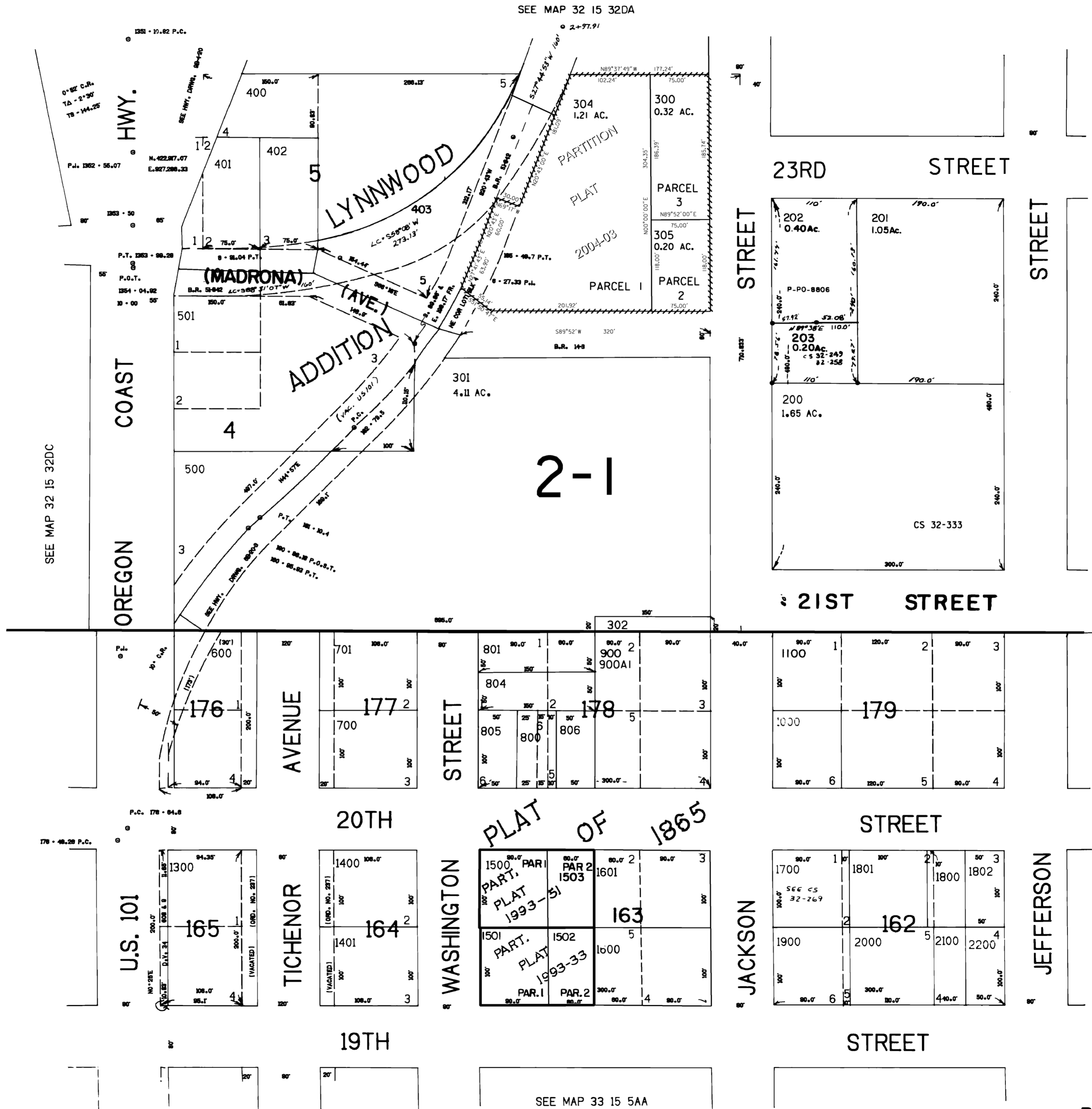
Revised RAA
1/14/2008
PORT ORFORD
32S15W32DD

THIS MAP WAS PREPARED FOR
ASSESSMENT PURPOSE ONLY

SE1/4 SE1/4 SEC. 32 T.32S. R.15W. W.M.
CURRY COUNTY

32 15 32DD
PORT ORFORD

1"=400'



CANCELLED NO.'S
100
303
802
803
1200
1810
2300 THRU 2900

SEE MAP 32 15 33C

SEE MAP 33 15 5AA

Revised
5/19/2004, DBJ
32 15 32DD
PORT ORFORD