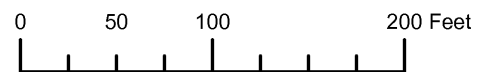


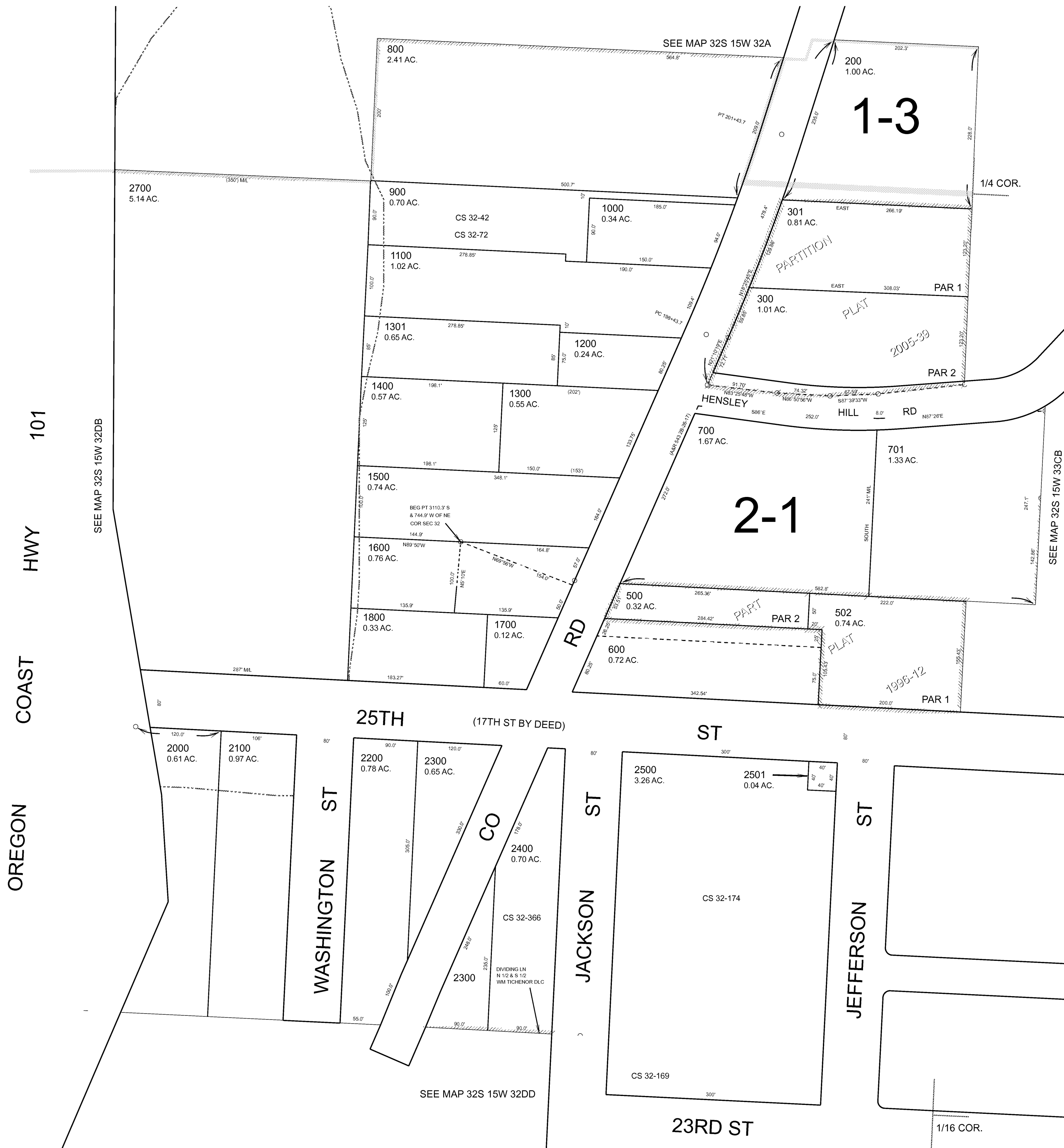
THIS MAP WAS PREPARED FOR ASSESSMENT PURPOSE ONLY



N.E. 1/4 S.E. 1/4 SEC. 32 T.32S. R.15W. W.M. CURRY COUNTY 1" = 100'

32S15W32DA PORT ORFORD

- CANCELLED:
- 100
- 101
- 400
- 401
- 501
- 1900
- 2600
- 2601



Revised RAA 1/11/2008 PORT ORFORD 32S15W32DA

THIS MAP WAS PREPARED FOR ASSESSMENT PURPOSE ONLY

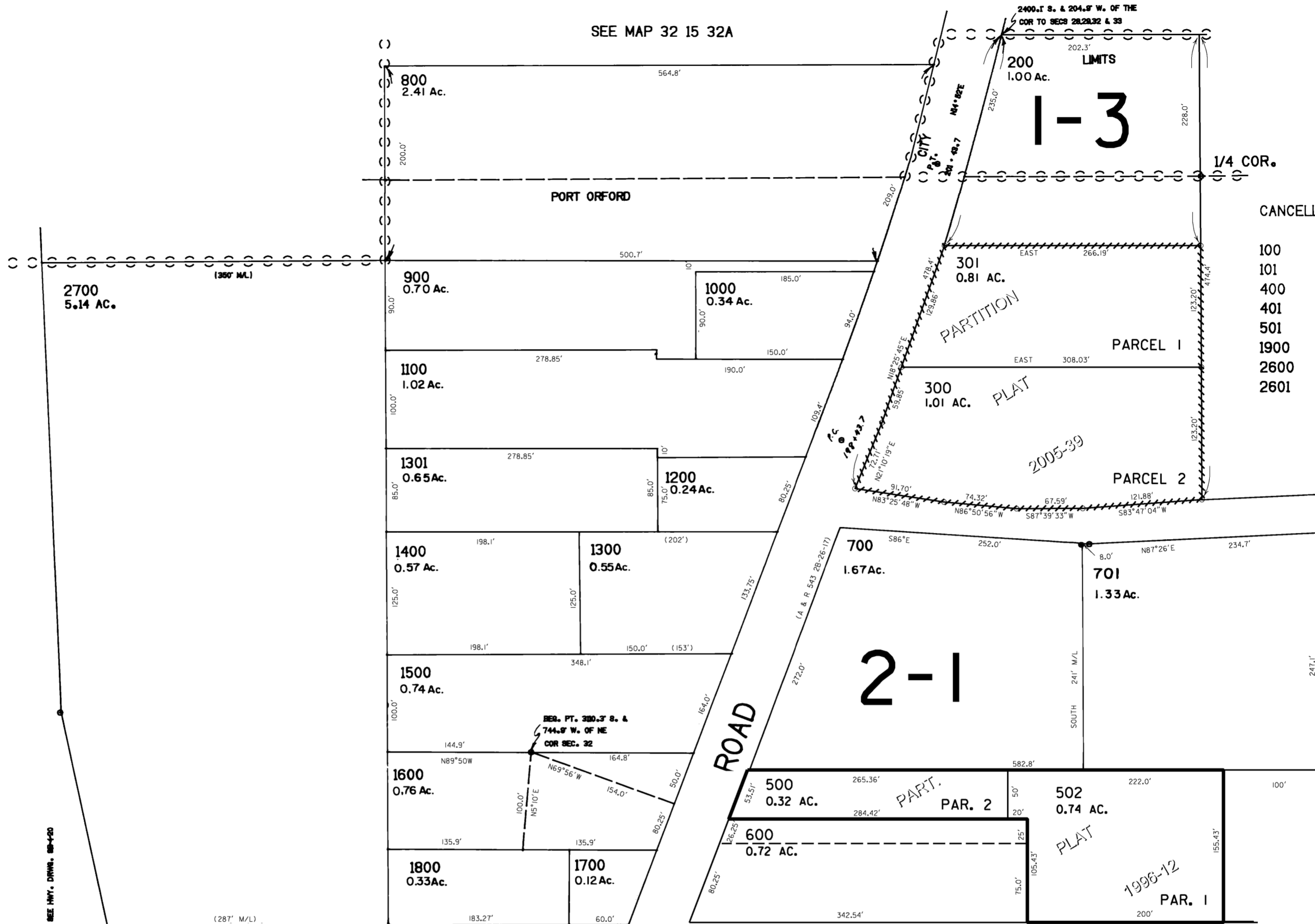
NE1/4 SE1/4 SEC. 32 T.32S. R.15W. W.M.  
CURRY COUNTY

32 15 32DA  
PORT ORFORD

1"=100'

SEE MAP 32 15 32DB

U.S. 101  
OREGON COAST HWY.



SEE MAP 32 15 33C

25TH

STREET



2000  
0.61 AC.

2100  
0.97 AC.

2200  
0.78 AC.

2300  
0.65 AC.

2400  
0.70 AC.

2500  
3.26 AC.

2501  
0.04 AC.

WASHINGTON ST.

COUNTY

JACKSON ST.

JEFFERSON ST.

DIVIDING LINE BETWEEN  
N 1/2 + S 1/2 W.M.  
TICHENOR D.L.C.

SEE MAP 32 15 32DD

23RD

STREET

32 15 32DA  
PORT ORFORD

Revised  
1/25/2006, DBJ

THIS MAP WAS PREPARED FOR  
ASSESSMENT PURPOSE ONLY

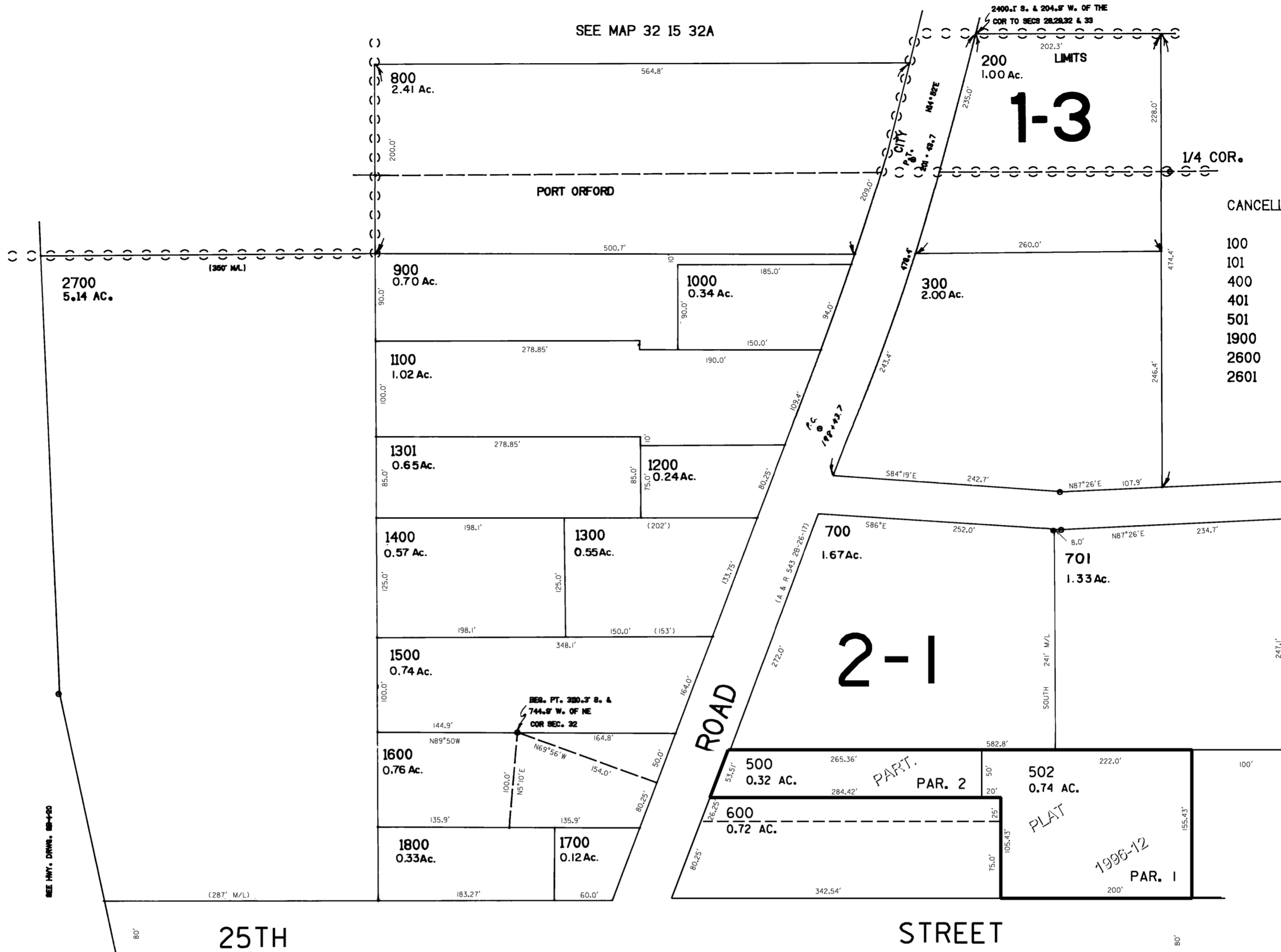
NE1/4 SE1/4 SEC. 32 T.32S. R.15W. W.M.  
CURRY COUNTY

32 15 32DA  
PORT ORFORD

1"=100'

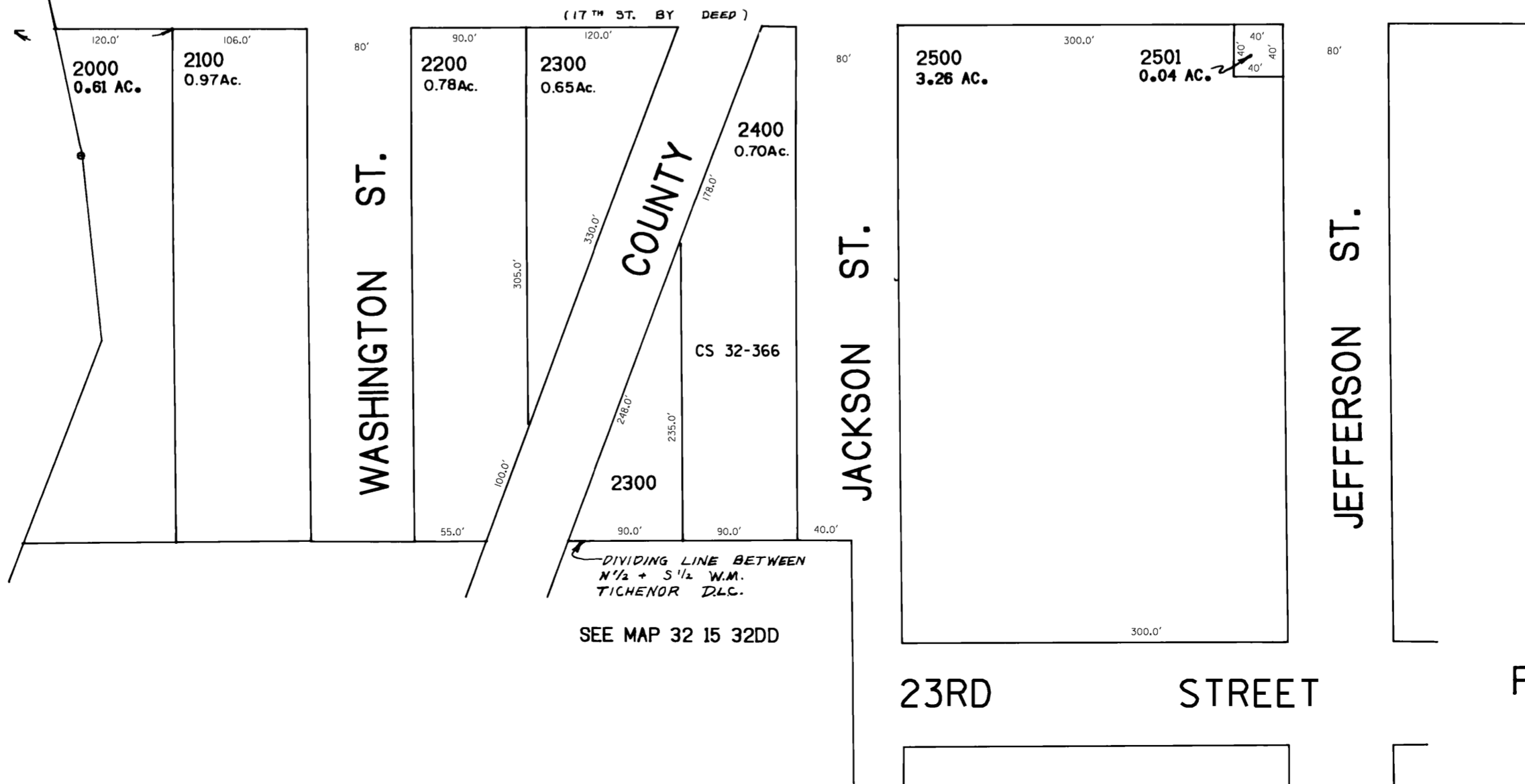
SEE MAP 32 15 32DB

U.S. 101  
OREGON COAST HWY.



SEE MAP 32 15 33C

END 80' TYP  
1348 - 50  
1350 - 00



32 15 32DA  
PORT ORFORD

Revised  
6/23/2005, DBJ