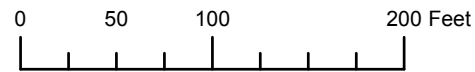


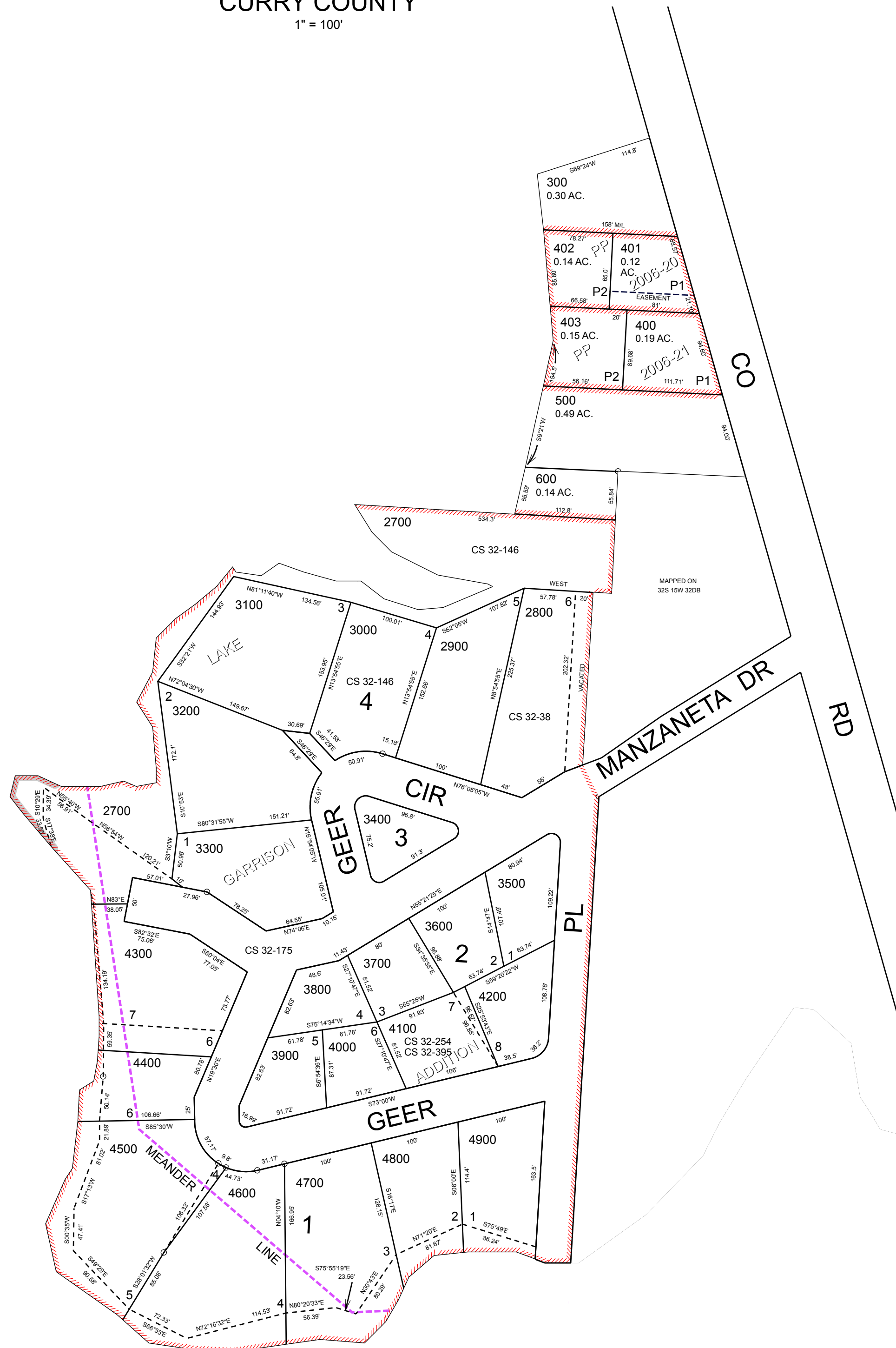
THIS MAP WAS PREPARED FOR  
ASSESSMENT PURPOSE ONLY



DETAIL MAP NO. 1  
S.W.1/4 SEC.32 T.32S. R.15W. W.M.  
CURRY COUNTY  
1" = 100'

32S15W32C  
DETAIL MAP NO 1  
PORT ORFORD

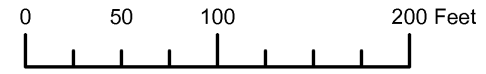
CANCELLED:



Revised: RAA  
01/19/2010

PORT ORFORD  
DETAIL MAP NO 1  
32S15W32C

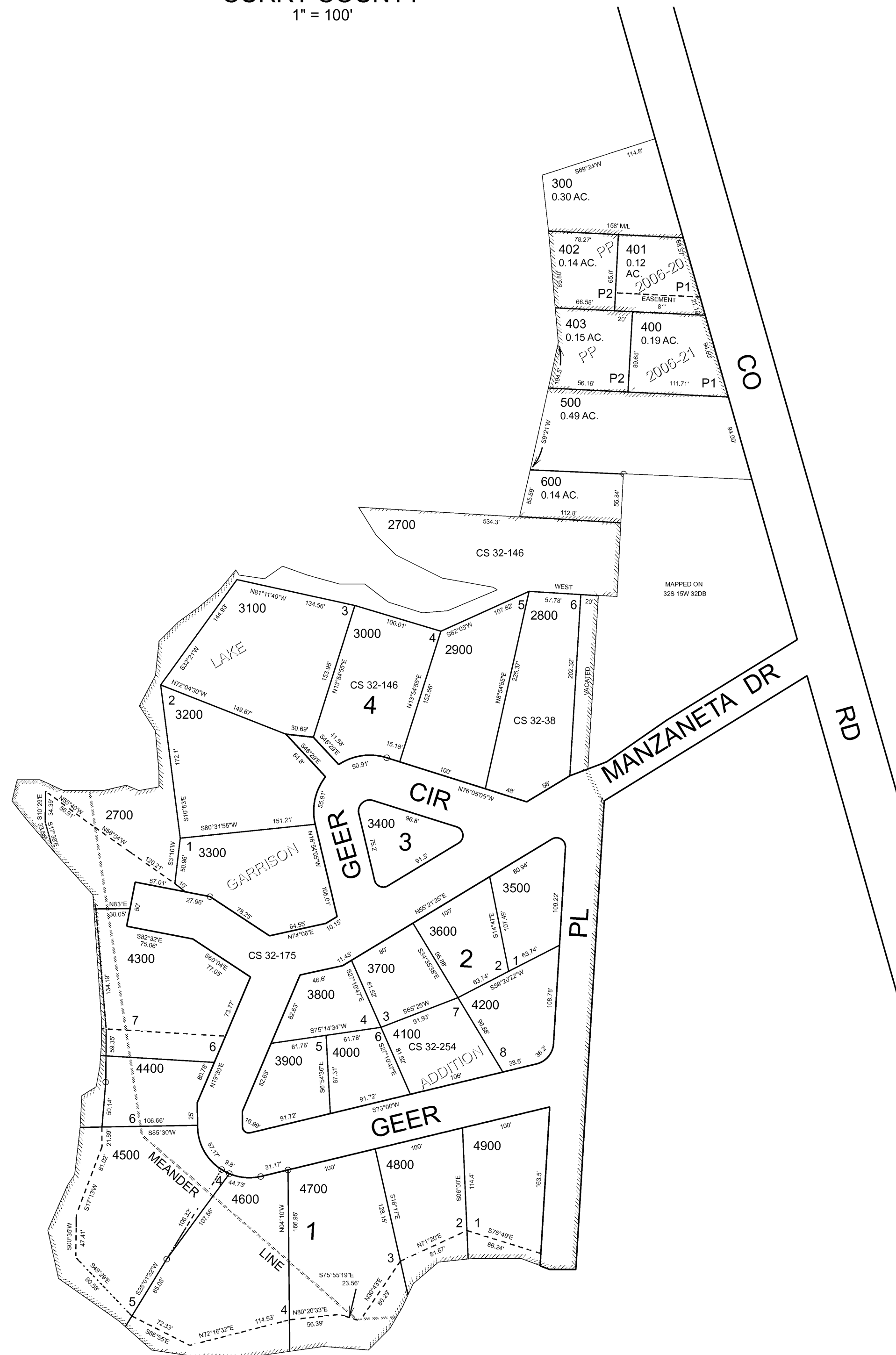
THIS MAP WAS PREPARED FOR ASSESSMENT PURPOSE ONLY



DETAIL MAP NO. 1  
S.W.1/4 SEC.32 T.32S. R.15W. W.M.  
CURRY COUNTY  
1" = 100'

32S15W32C  
DETAIL MAP NO.1

CANCELLED:



Revised RAA  
1/11/2008

DETAIL MAP NO.1  
32S15W32C