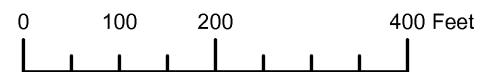


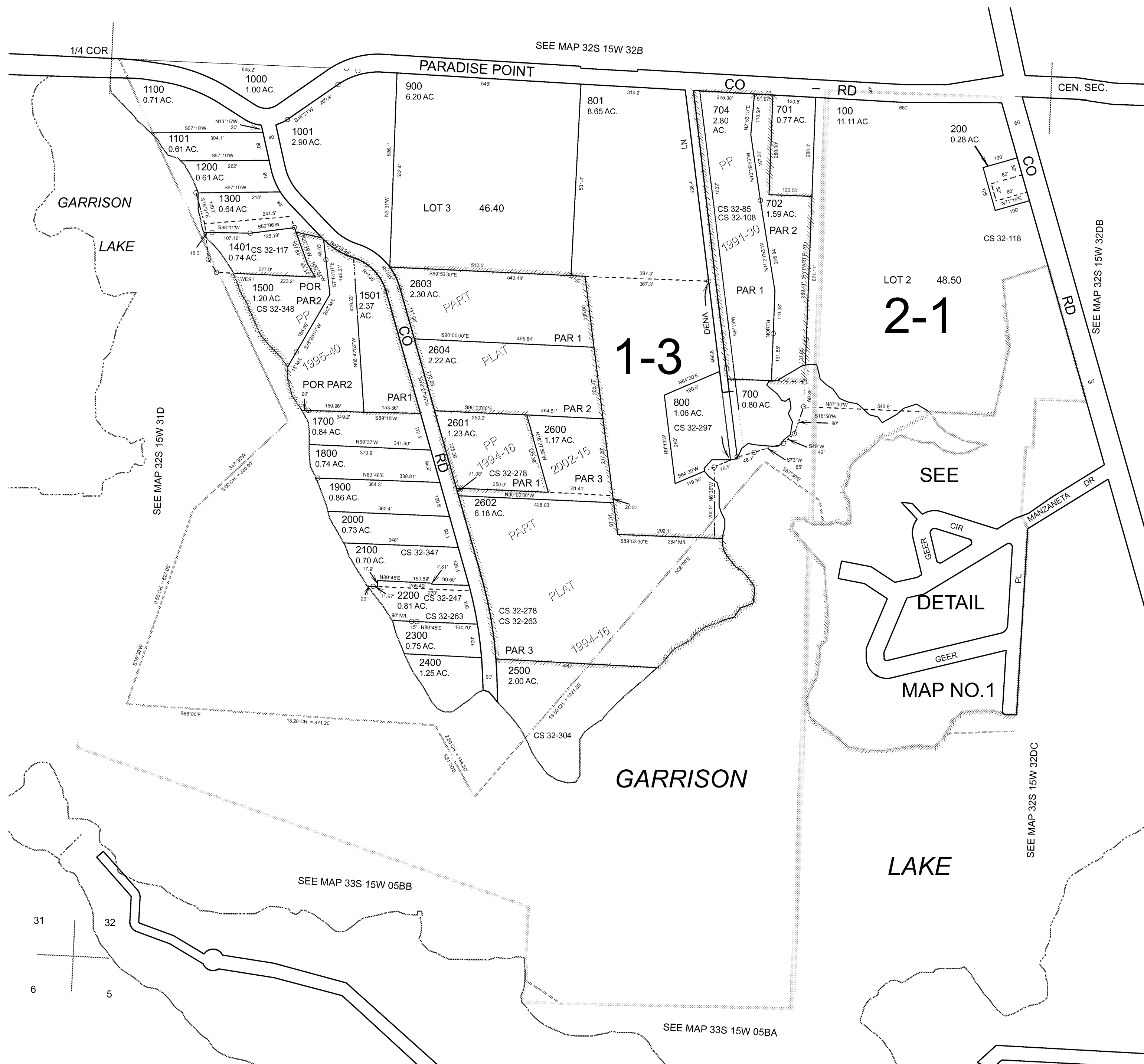
THIS MAP WAS PREPARED FOR ASSESSMENT PURPOSE ONLY



S.W.1/4 SEC.32 T.32S. R.15W. W.M. CURRY COUNTY 1" = 200'

32S15W32C PORT ORFORD

- CANCELLED:
- 101
- 703
- 1400
- 1600
- 2101
- 2600U1
- 2600U2
- 2801
- 5000 THRU 5002
- 5100 THRU 5105



SEE
DETAIL
MAP NO.1

SEE MAP 33S 15W 05BB

SEE MAP 33S 15W 05BA

SEE MAP 32S 15W 32DC

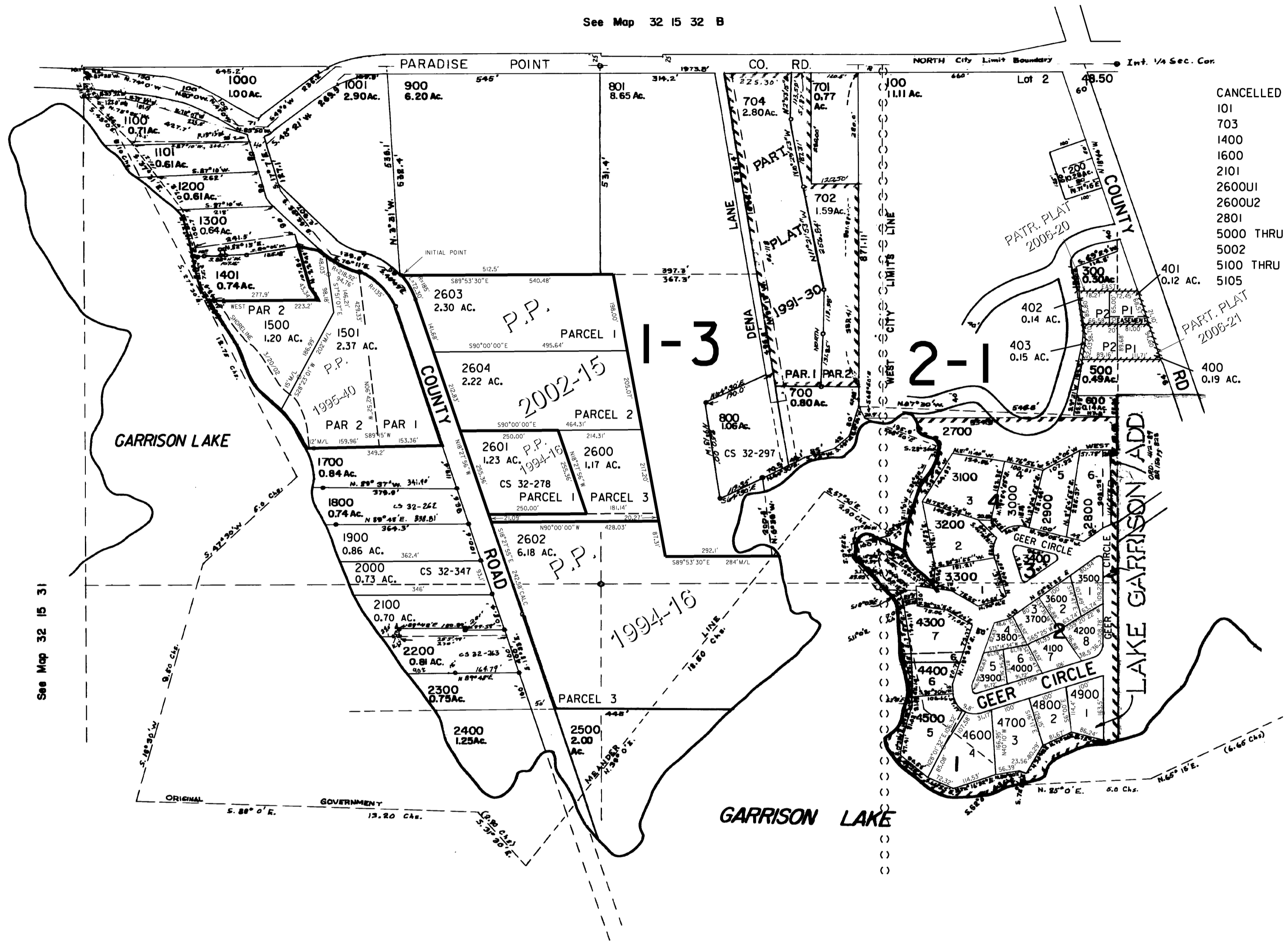
THIS MAP WAS PREPARED FOR
ASSESSMENT PURPOSE ONLY

SW1/4 SEC. 32 T.32S. R.15W. W.M.
CURRY COUNTY

1" = 200'

32 15 32C
PORT ORFORD

See Map 32 15 32 B



- CANCELLED NO.
- 101
- 703
- 1400
- 1600
- 2101
- 2600U1
- 2600U2
- 2801
- 5000 THRU
- 5002
- 5100 THRU
- 5105

See Map 32 15 31

See Map 32 15 32 DB

See Map 33 15 5 BB

See Map 33 15 5 BA

Revised
7/13/2006 RAA
32 15 32C
PORT ORFORD

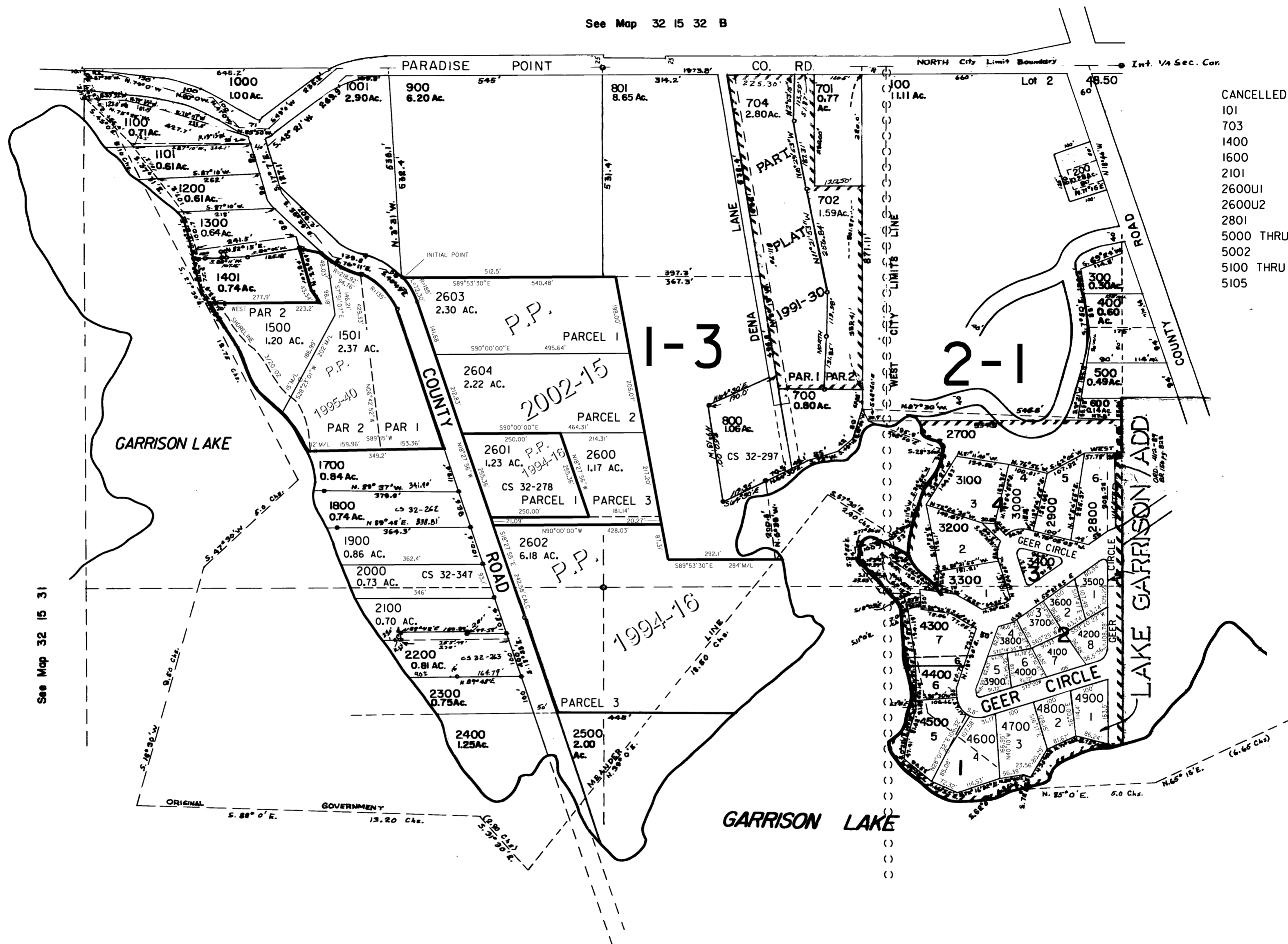
THIS MAP WAS PREPARED FOR
ASSESSMENT PURPOSE ONLY

SW1/4 SEC. 32 T.32S. R.15W. W.M.
CURRY COUNTY

32 15 32C
PORT ORFORD

1" = 200'

See Map 32 15 32 B



- CANCELLED NO.
- 101
- 703
- 1400
- 1600
- 2101
- 2600U1
- 2600U2
- 2801
- 5000 THRU
- 5002
- 5100 THRU
- 5105

See Map 32 15 31

See Map 33 15 5 BB

See Map 33 15 5 BA

See Map 32 15 32 DB

Revised
8/16/2004, CS
32 15 32C
PORT ORFORD