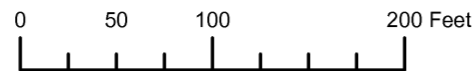


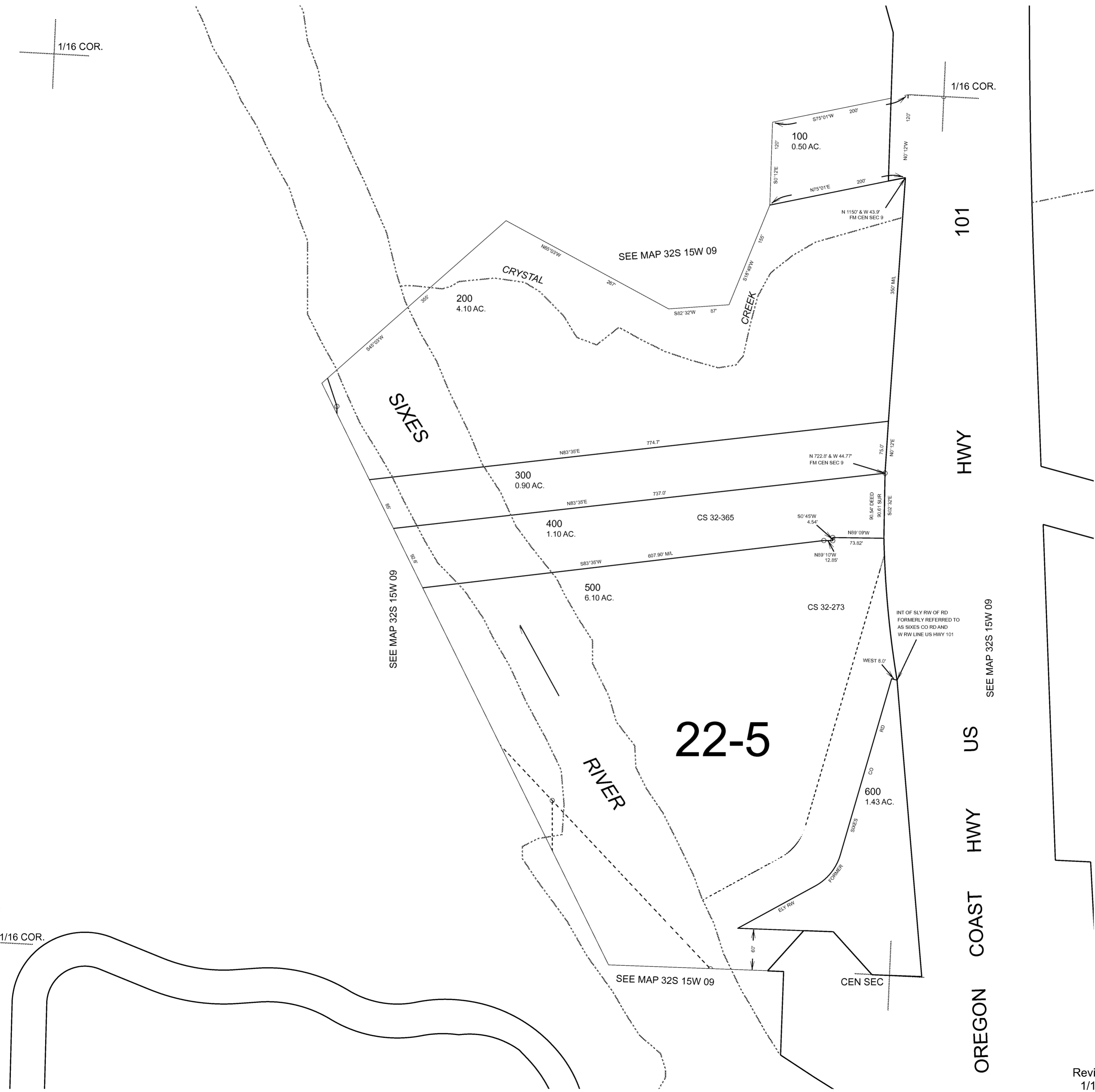
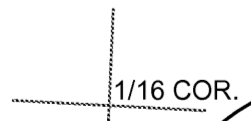
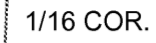
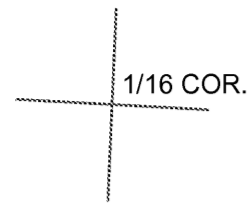
THIS MAP WAS PREPARED FOR ASSESSMENT PURPOSE ONLY



S.E. 1/4 N.W. 1/4 SEC. 9 T. 32S. R. 15W. W.M. CURRY COUNTY 1" = 100'

32S15W09BD

CANCELLED:



SIXES

22-5

101

HWY

US

HWY

COAST

OREGON

SEE MAP 32S 15W 09

SEE MAP 32S 15W 09

SEE MAP 32S 15W 09

SEE MAP 32S 15W 09

CEN SEC

INT OF SLY RW OF RD FORMERLY REFERRED TO AS SIXES CO RD AND W RW LINE US HWY 101

Revised RAA 1/11/2008

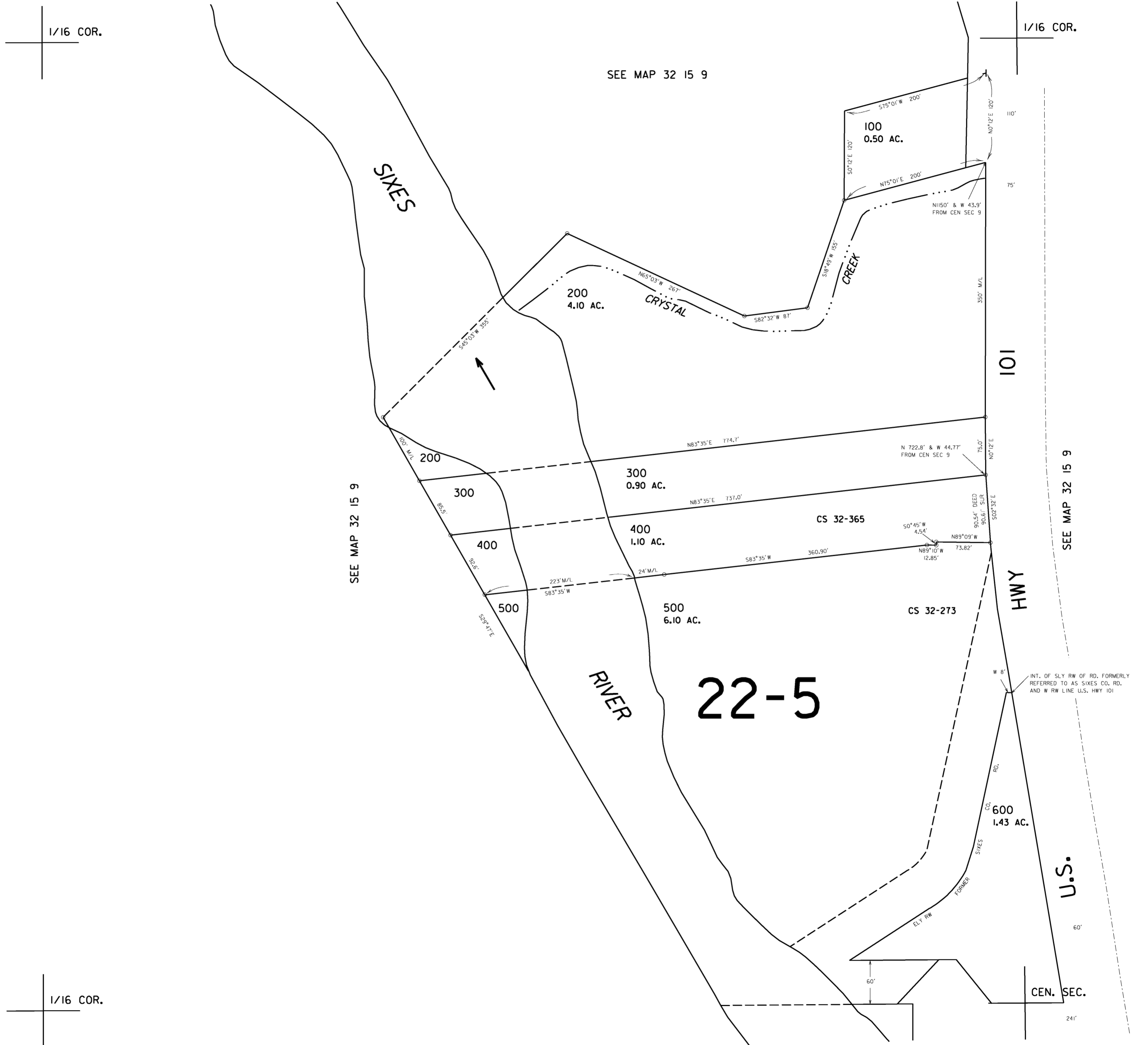
32S15W09BD

THIS MAP WAS PREPARED FOR
ASSESSMENT PURPOSE ONLY

SE1/4 NW1/4 SEC.9 T.32S. R.15W. W.M.
CURRY COUNTY

1" = 100'

32 15 09BD



SEE MAP 32 15 9

32 15 09BD
Revised
4/28/2005, DBJ