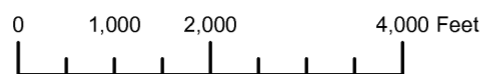


THIS MAP WAS PREPARED FOR ASSESSMENT PURPOSE ONLY



T.32S. R.15W. W.M. CURRY COUNTY

1" = 2000'
SEE MAP 31S 15W

32S15W & INDEX

- CANCELLED:
- 301 THRU 307
- 400
- 401
- 404 THRU 413
- 500
- 600
- 1700
- 1900
- 2500
- 2600
- 2601
- 2700
- 2800
- 2900
- 2902
- 2903
- 2904
- 3000
- 3001
- 4001
- 4100
- 4200
- 4201
- 4203
- 4204
- 4205
- 4206
- 4300
- 4900
- 5000
- 5104
- 5701
- 6100
- 6102 THRU 6107
- 6600 THRU 6605
- 6700U2

22-7

22-5

22-1

22-5

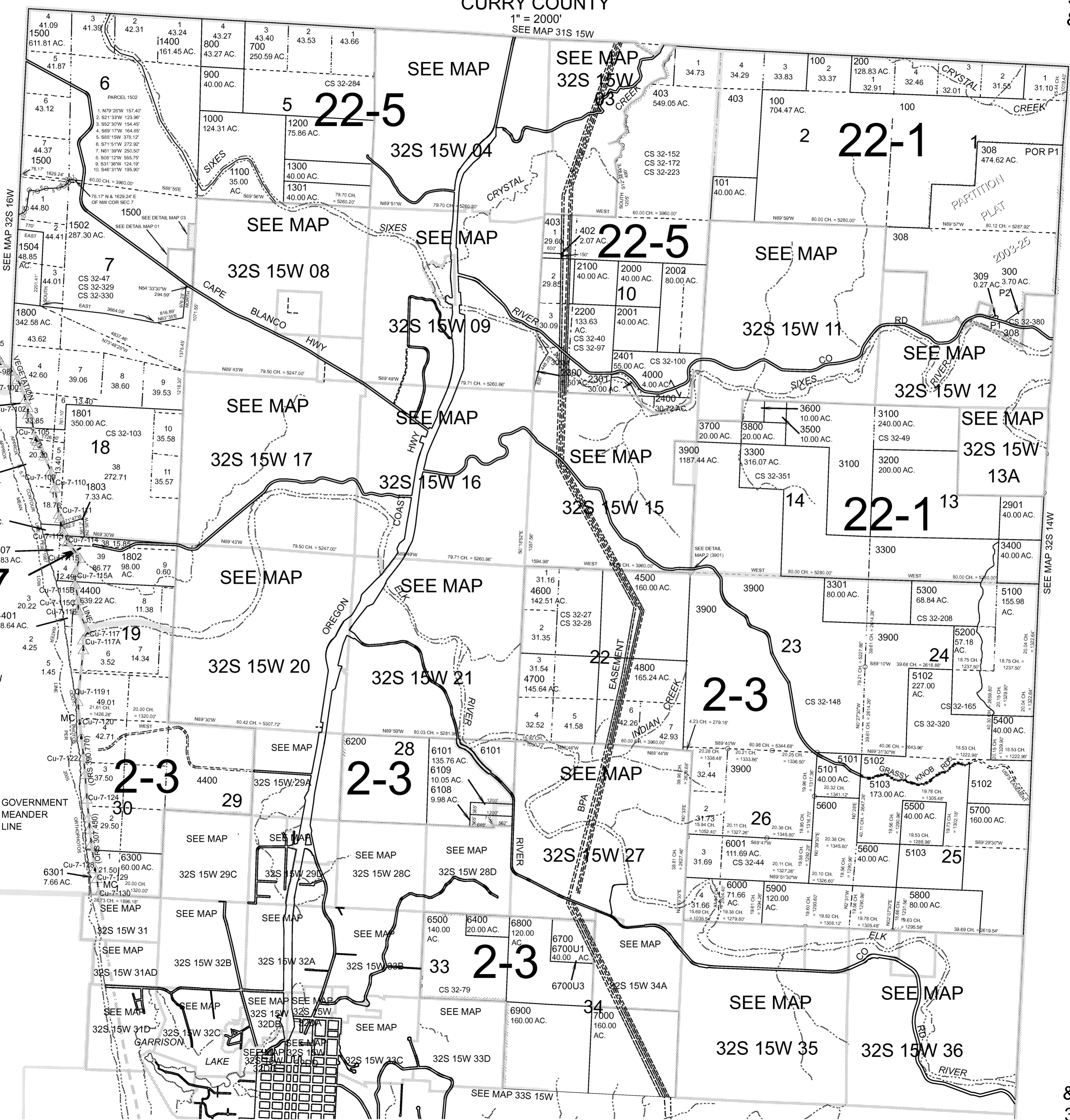
22-1

2-3

2-3

2-3

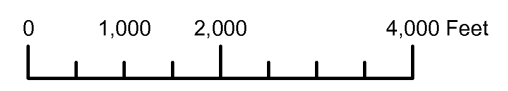
2-3



SEE MAP 32S 14W

SEE MAP 33S 15W

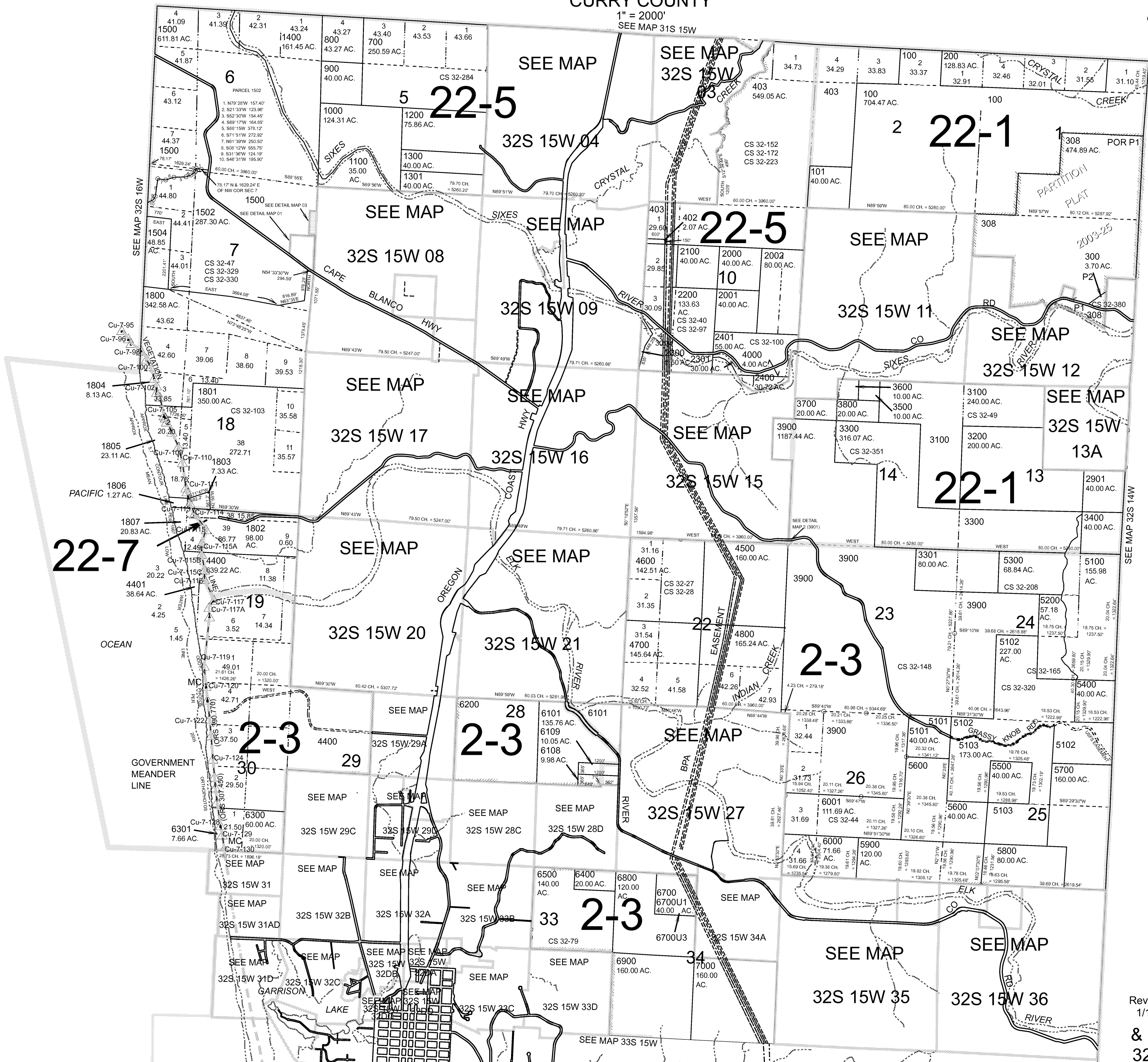
THIS MAP WAS PREPARED FOR ASSESSMENT PURPOSE ONLY



T.32S. R.15W. W.M. CURRY COUNTY

1" = 2000'
SEE MAP 31S 15W

32S15W & INDEX

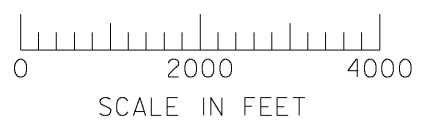


- CANCELLED:
- 301 THRU 307
 - 400
 - 401
 - 404 THRU 413
 - 500
 - 600
 - 1700
 - 1900
 - 2500
 - 2600
 - 2601
 - 2700
 - 2800
 - 2900
 - 2902
 - 2903
 - 2904
 - 3000
 - 3001
 - 4001
 - 4100
 - 4200
 - 4201
 - 4203
 - 4204
 - 4205
 - 4206
 - 4300
 - 4900
 - 5000
 - 5104
 - 5701
 - 6100
 - 6102 THRU 6107
 - 6600 THRU 6605
 - 6700U2

SEE MAP 32S 14W

Revised RAA
1/11/2008
& INDEX
32S15W

THIS MAP WAS PREPARED FOR
ASSESSMENT PURPOSE ONLY

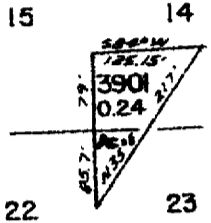


SCALE IN FEET
SEE MAP 31 15

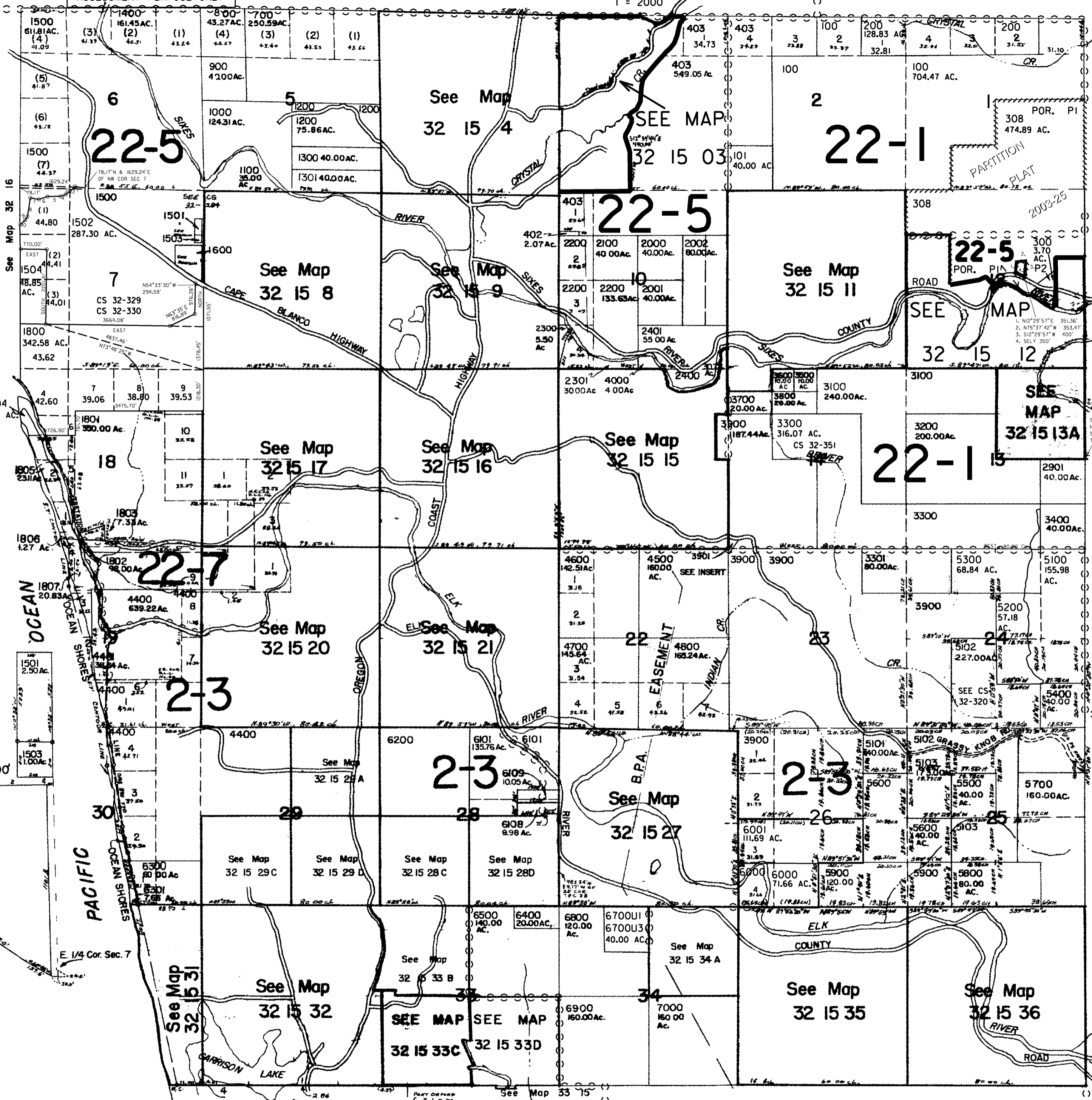
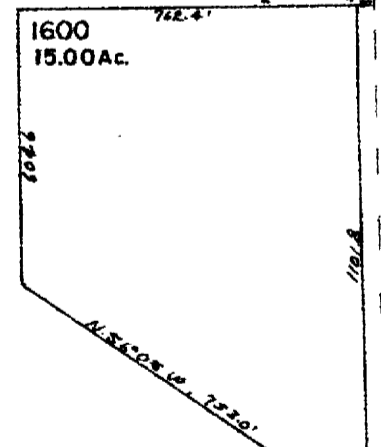
1" = 2000'

PARCEL 1502
1. N79°28'W 151.40'
2. S21°33'W 125.96'
3. S52°30'W 154.45'
4. S69°17'W 164.85'
5. S88°15'W 378.12'
6. S71°51'W 272.92'
7. N61°39'W 250.50'
8. S08°12'W 659.75'
9. S31°36'W 124.19'
10. S46°31'W 195.90'

SEC. 14
PARCEL 3901
1" = 200'



Section 7:
1" = 400'



- CANCELLED NOS.
- 301 THRU 307
- 400
- 401
- 404 THRU 413
- 500
- 600
- 1700
- 1900
- 2500
- 2600
- 2601
- 2700
- 2800
- 2900
- 2902
- 2903
- 2904
- 3000
- 3001
- 4001
- 4100
- 4200
- 4201
- 4203
- 4204
- 4205
- 4206
- 4300
- 4900
- 5000
- 5104
- 5701
- 6100
- 6102 THRU 6107
- 6600 THRU 6605
- 6700U2

T.32S. R.15W. W.M.
CURRY COUNTY

32 15
& INDEX

THIS MAP WAS PREPARED FOR
ASSESSMENT PURPOSE ONLY

SEE MAP 31 15

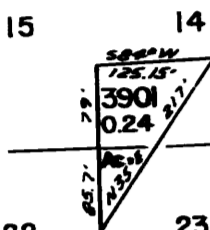
1" = 2000'

(1)

PARCEL 1502

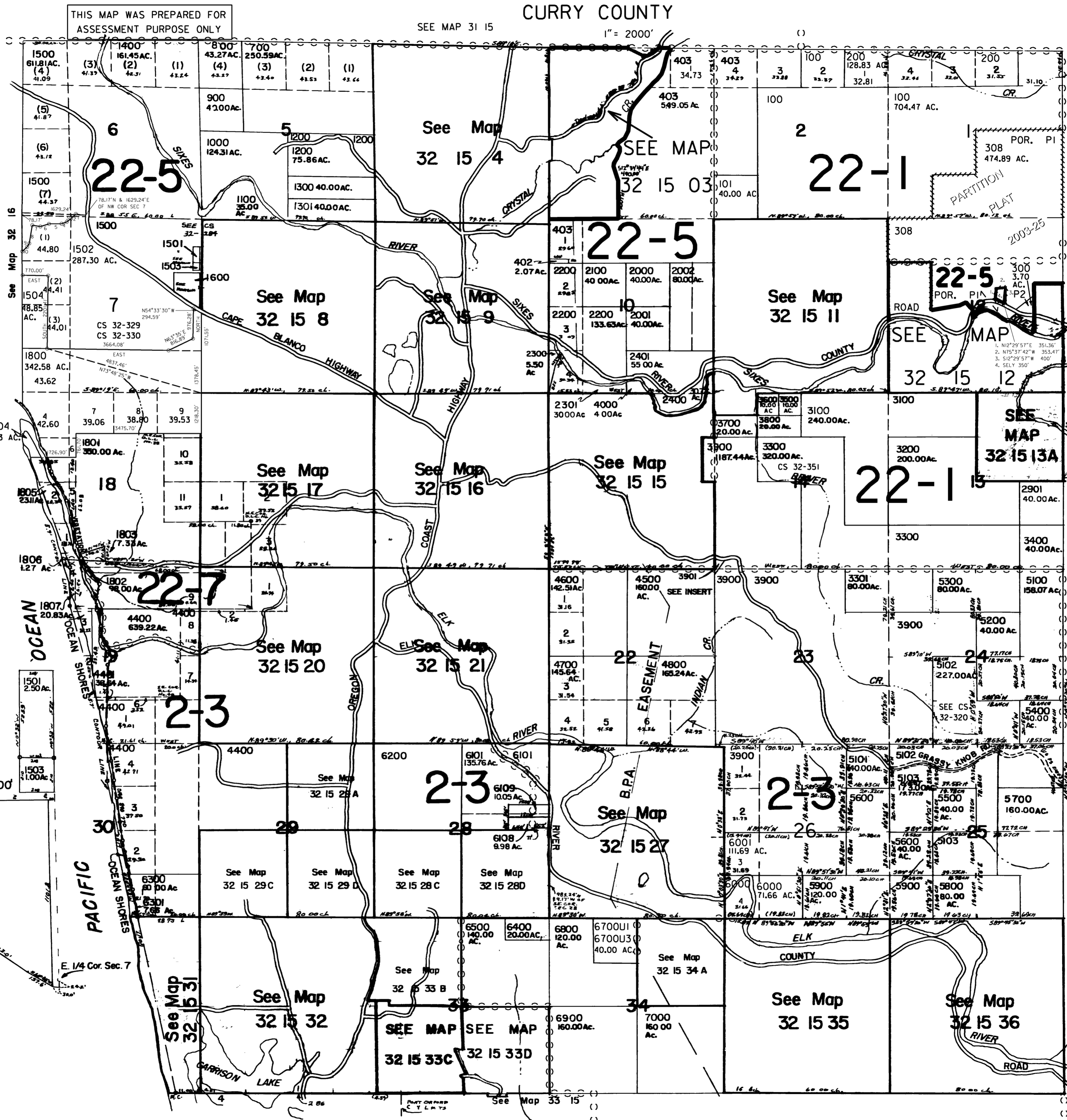
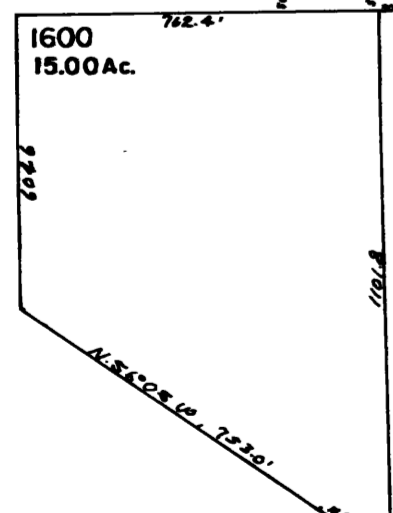
- 1. N79°28'W 151.40'
- 2. S21°33'W 123.96'
- 3. S52°30'W 154.45'
- 4. S69°17'W 164.85'
- 5. S88°15'W 378.12'
- 6. S71°51'W 272.92'
- 7. N81°33'W 250.50'
- 8. S08°12'W 553.75'
- 9. S31°36'W 124.19'
- 10. S46°31'W 195.90'

SEC. 14
PARCEL 3901
1" = 200'



Section 7:

1" = 400'



- CANCELLED NOS.
301 THRU 307
400
401
404 THRU 413
500
600
1700
1900
2500
2600
2601
2700
2800
2900
2902
2903
2904
3000
3001
4001
4100
4200
4201
4203
4204
4205
4206
4300
4900
5000
5104
5701
6100
6102 THRU 6107
6600 THRU 6605
6700U2

Revised
5/5/2005, DBJ
32 15
& INDEX