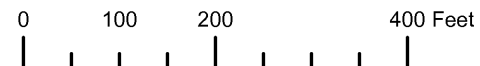


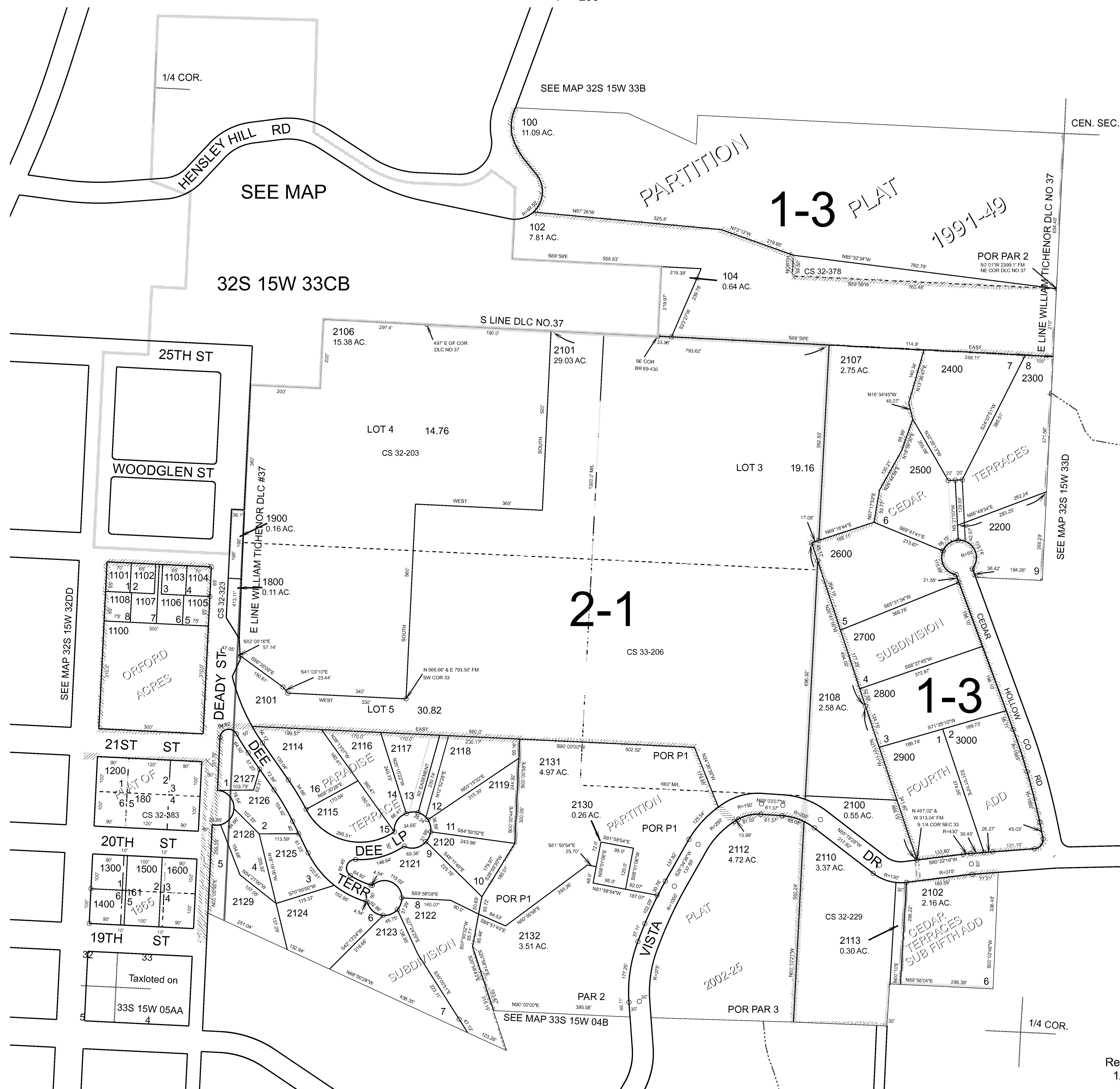
THIS MAP WAS PREPARED FOR ASSESSMENT PURPOSE ONLY



S.W.1/4 SEC.33 T.32S. R.15W. W.M. CURRY COUNTY  
1" = 200'

32S15W33C & INDEX

- CANCELLED:
- 101
  - 103
  - 105
  - 106
  - 200 THRU 1000
  - 1700
  - 1801
  - 2000
  - 2103 THRU 2105
  - 2109



Revised RAA  
1/11/2008

& INDEX  
32S15W33C

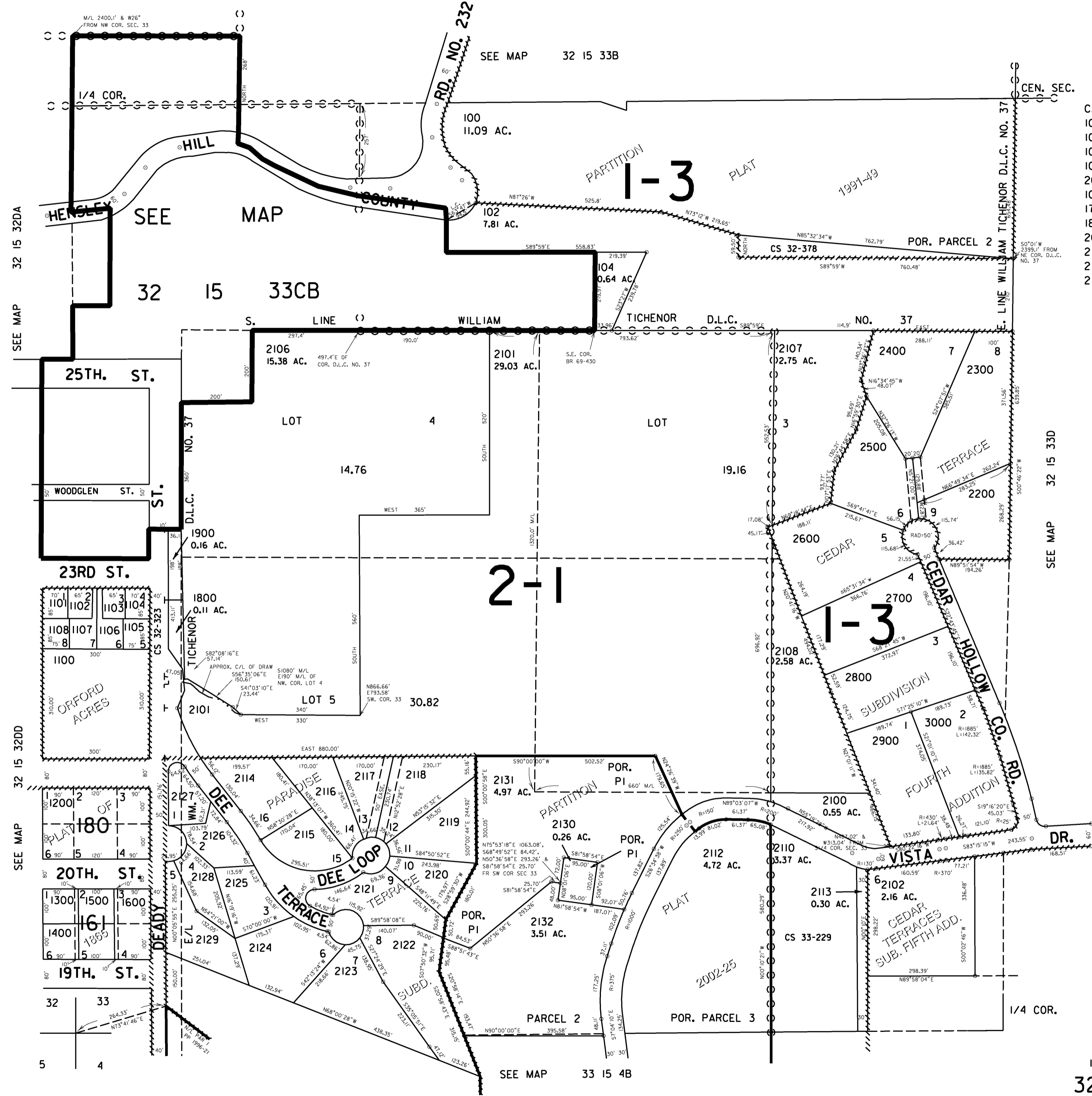
THIS MAP WAS PREPARED FOR ASSESSMENT PURPOSE ONLY



SW1/4 SEC. 33 T.32S. R.15W. W.M. CURRY COUNTY

32 15 33C & INDEX

1" = 200'



- CANCELLED NO.
- 101
- 103
- 105
- 106
- 200 THRU 1000
- 1700
- 1801
- 2000
- 2103 THRU 2109

SEE MAP 32 15 33D

SEE MAP 33 15 4B

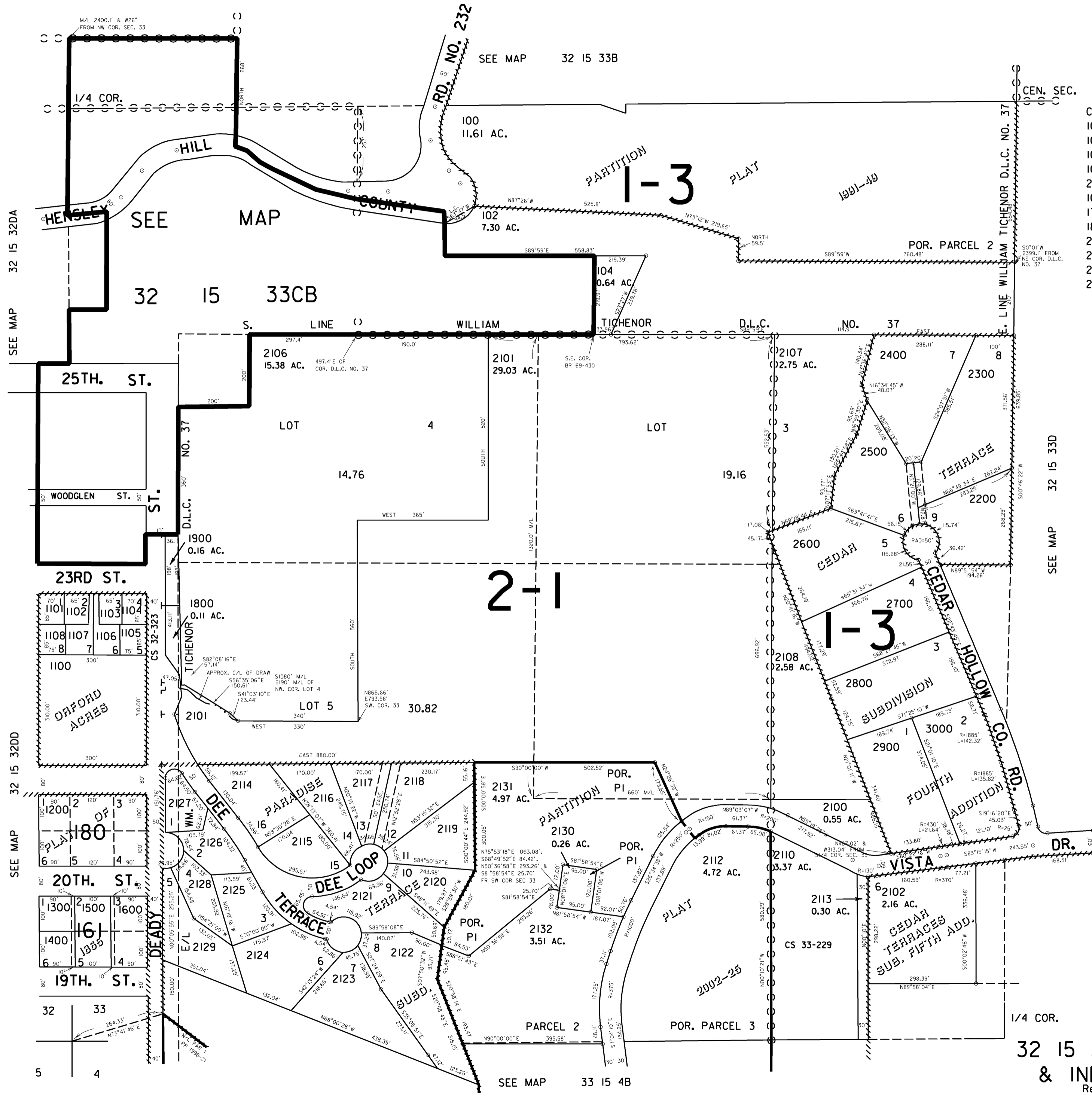
Revised 12/20/2006, RAA 32 15 33C & INDEX

THIS MAP WAS PREPARED FOR  
ASSESSMENT PURPOSE ONLY

SW1/4 SEC. 33 T.32S. R.15W. W.M.  
CURRY COUNTY

1" = 200'

32 15 33C  
& INDEX



CANCELLED NO.  
101  
103  
105  
106  
200 THRU  
1000  
1700  
1801  
2000  
2103 THRU  
2105  
2109

SEE MAP 32 15 32DA

SEE MAP 32 15 32DB

SEE MAP 32 15 32DD

SEE MAP 32 15 32DE

SEE MAP 32 15 32DF

SEE MAP 32 15 33B

SEE MAP 33 15 4B

SEE MAP 32 15 33D

32 15 33C  
& INDEX  
Revised  
2/19/2003, DBJ