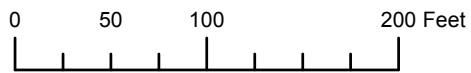


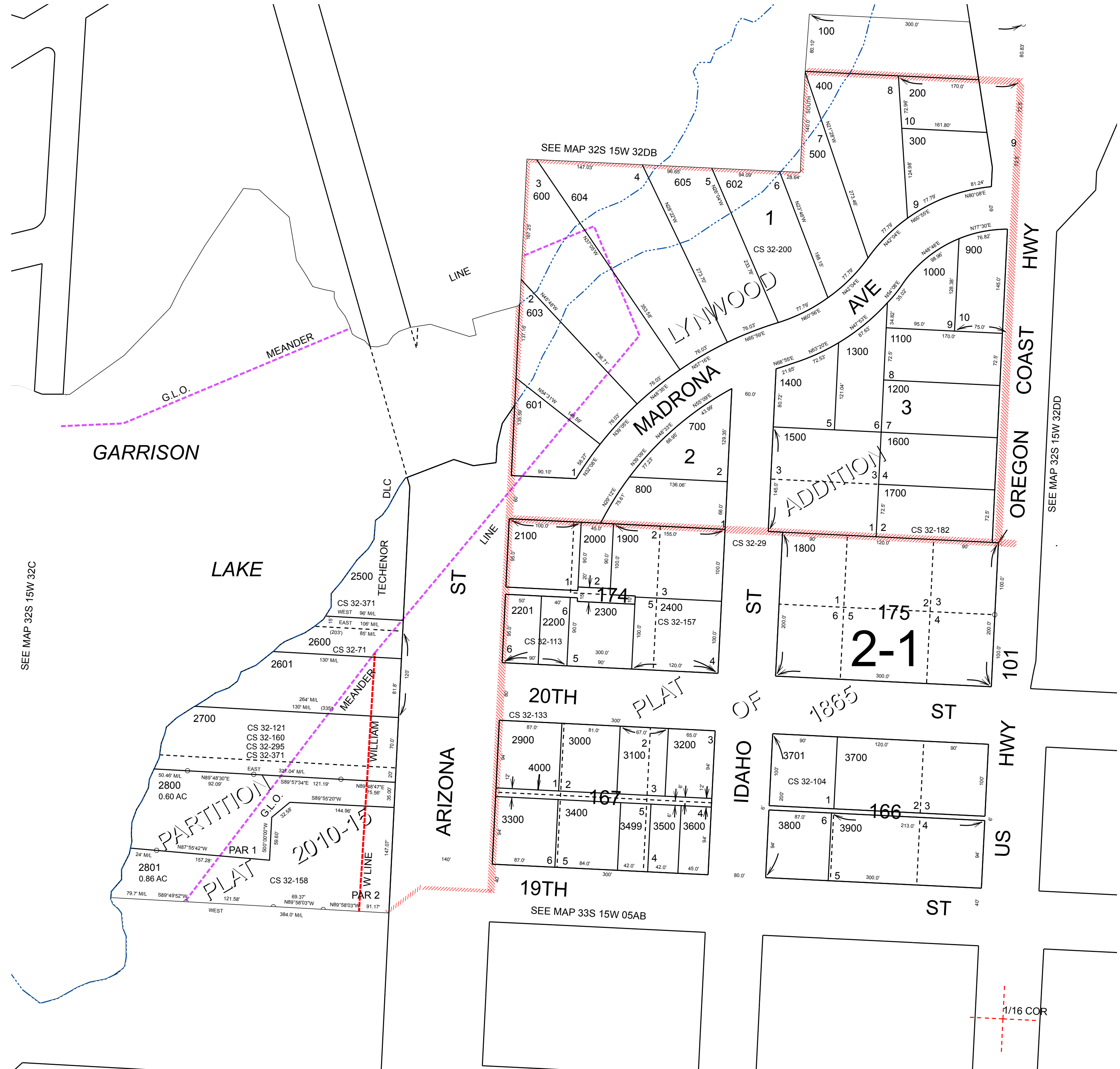
THIS MAP WAS PREPARED FOR ASSESSMENT PURPOSE ONLY



S.W.1/4 S.E.1/4 SEC.32 T.32S. R.15W. W.M. CURRY COUNTY
1" = 100'

32S15W32DC
PORT ORFORD

CANCELLED:
2800



SEE MAP 32S 15W 32DD

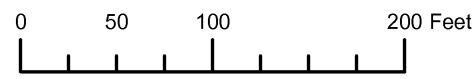
SEE MAP 32S 15W 32C

1/16 COR

Revised: MA
11/1/2010

PORT ORFORD
32S15W32DC

THIS MAP WAS PREPARED FOR
ASSESSMENT PURPOSE ONLY



S.W.1/4 S.E.1/4 SEC.32 T.32S. R.15W. W.M.
CURRY COUNTY
1" = 100'

32S15W32DC
PORT ORFORD

CANCELLED:



SEE MAP 32S 15W 32C

SEE MAP 32S 15W 32DB

SEE MAP 32S 15W 32DD

SEE MAP 33S 15W 05AB

Revised RAA
1/11/2008

PORT ORFORD
32S15W32DC

THIS MAP WAS PREPARED FOR
ASSESSMENT PURPOSE ONLY

SW1/4 SE1/4 SEC. 32 T.32S. R.15W. W.M.
CURRY COUNTY

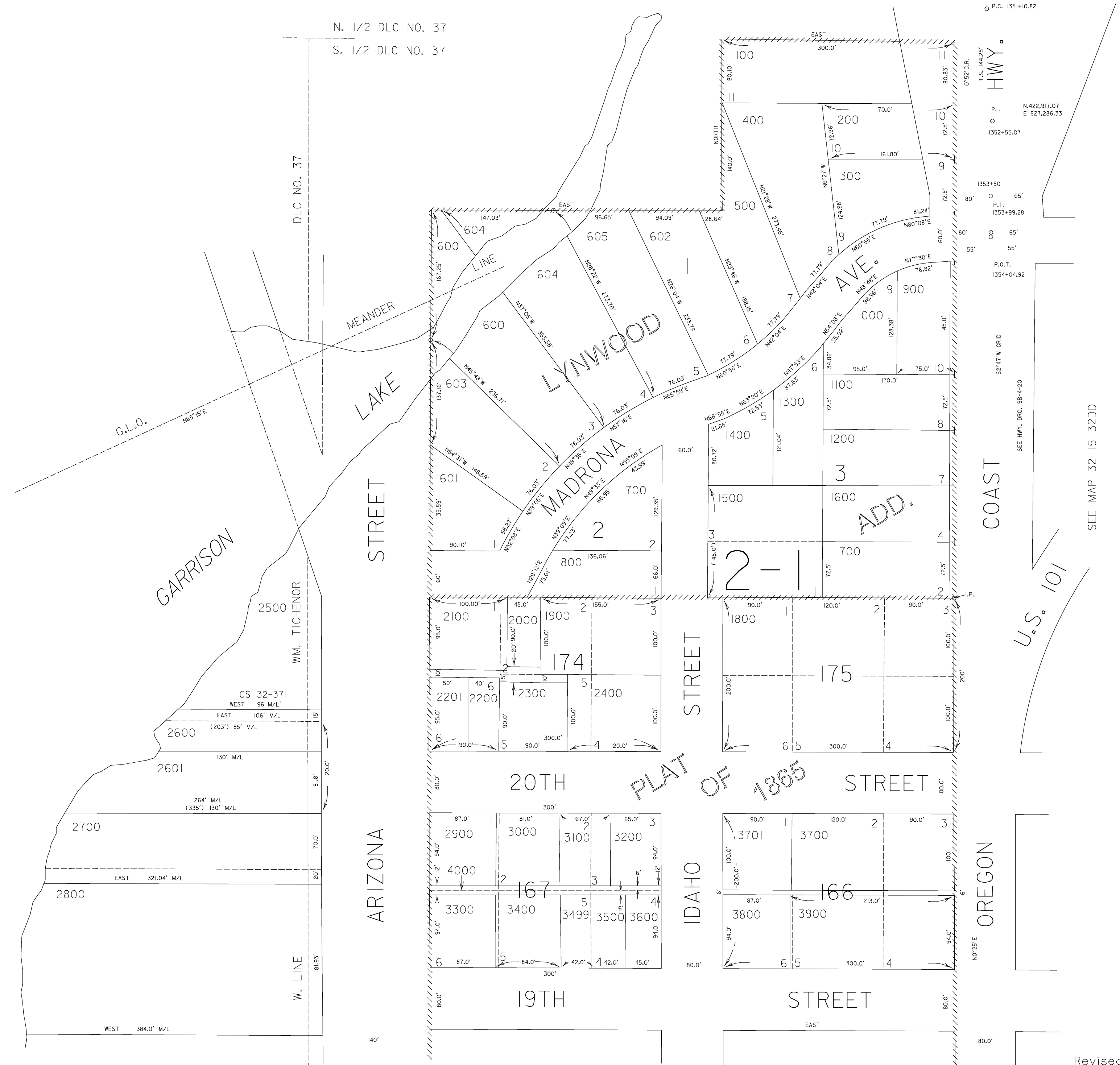
1" = 100'

32 15 32DC
PORT ORFORD

SEE MAP 32 15 32DB

SEE MAP 32 15 32C

SEE MAP 32 15 32DD



Revised 7/10/06, RAA

32 15 32DC
PORT ORFORD

SEE MAP 33 15 5AB

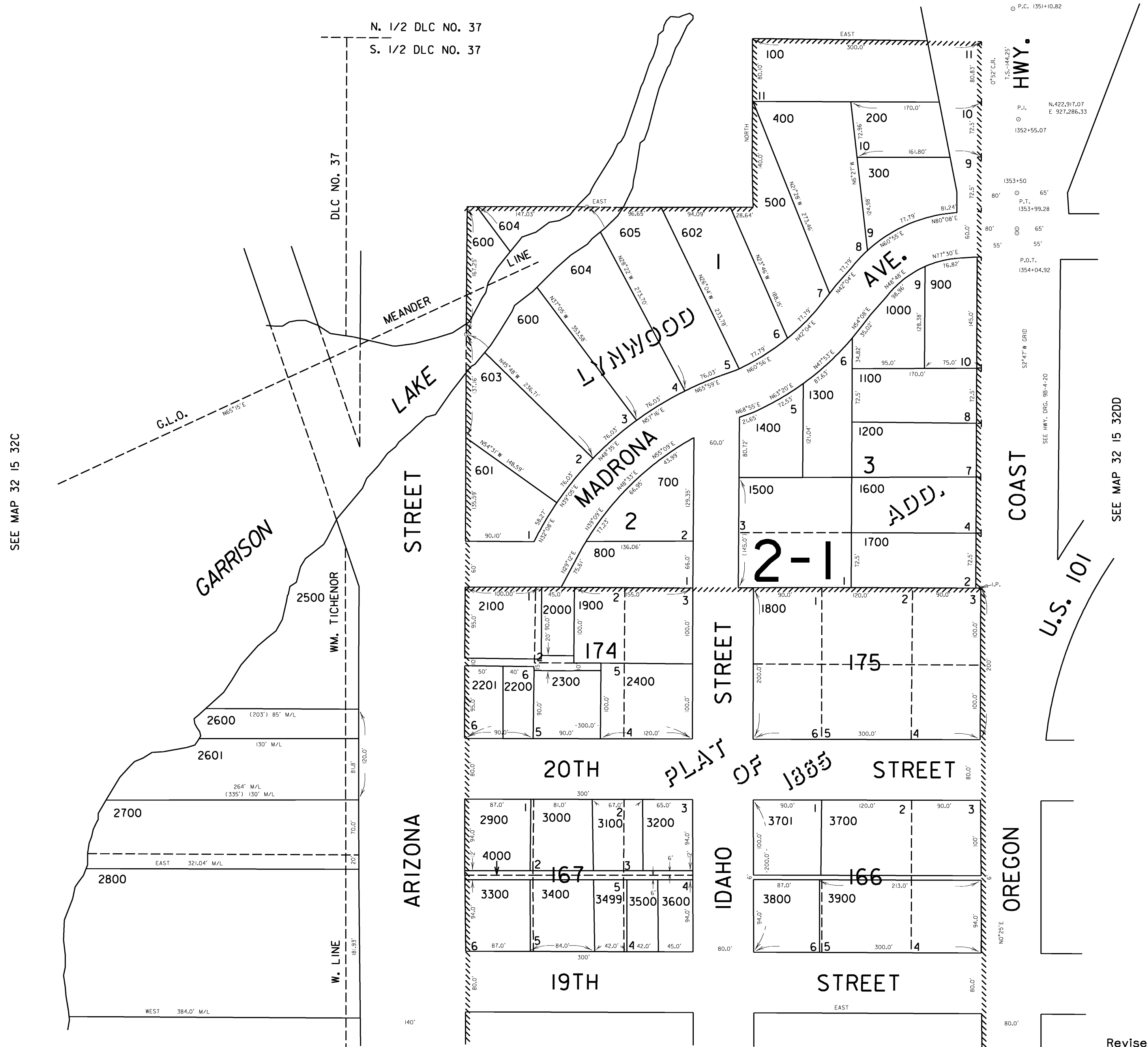
THIS MAP WAS PREPARED FOR
ASSESSMENT PURPOSE ONLY

SW1/4 SE1/4 SEC. 32 T.32S. R.15W. W.M.
CURRY COUNTY

32 15 32DC
PORT ORFORD

1" = 100'

SEE MAP 32 15 32DB



SEE MAP 32 15 32C

© P.C. 1351+10.82

T.35-144.25
HWY.
P.L.
N.422,917.07
E 927,286.33
1352+55.07

P.L.
1353+50
65'
P.L.
1353+99.28
65'
P.L.
1354+04.92
55'

SEE HWY. DRC. SB-4-20
52+47 W. GRD

COAST

U.S. 101

SEE MAP 32 15 32DD

SEE MAP 33 15 5AB

Revised 9/18/00, LA

32 15 32DC
PORT ORFORD