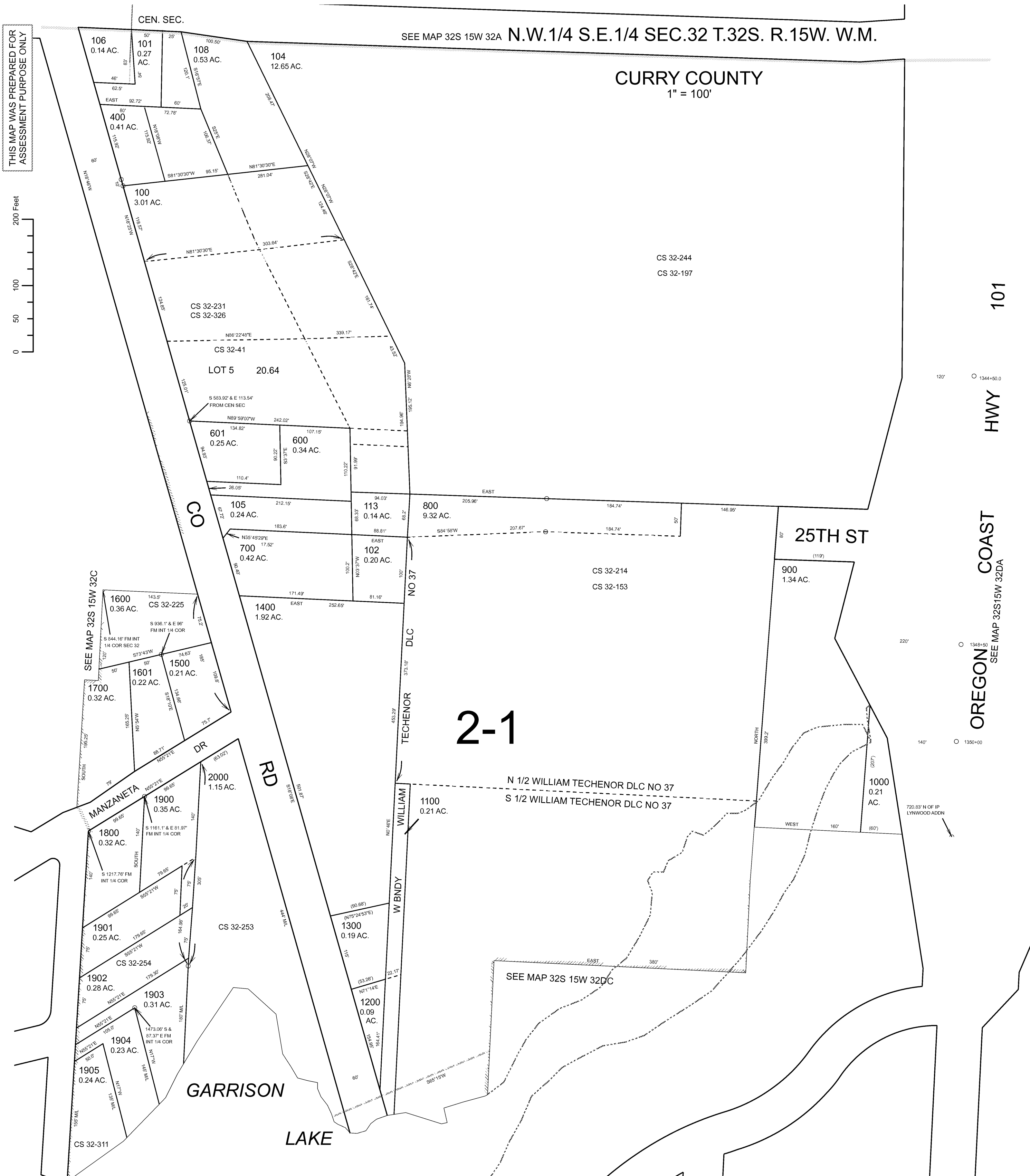


- CANCELLED:
103
107
109
110
111
112
200
300
500
501



THIS MAP WAS PREPARED FOR
ASSESSMENT PURPOSE ONLY

NW1/4 SE 1/4 SEC.32 T.32S. R15W.W.M.
CURRY COUNTY

SEE MAP 32 15 32A

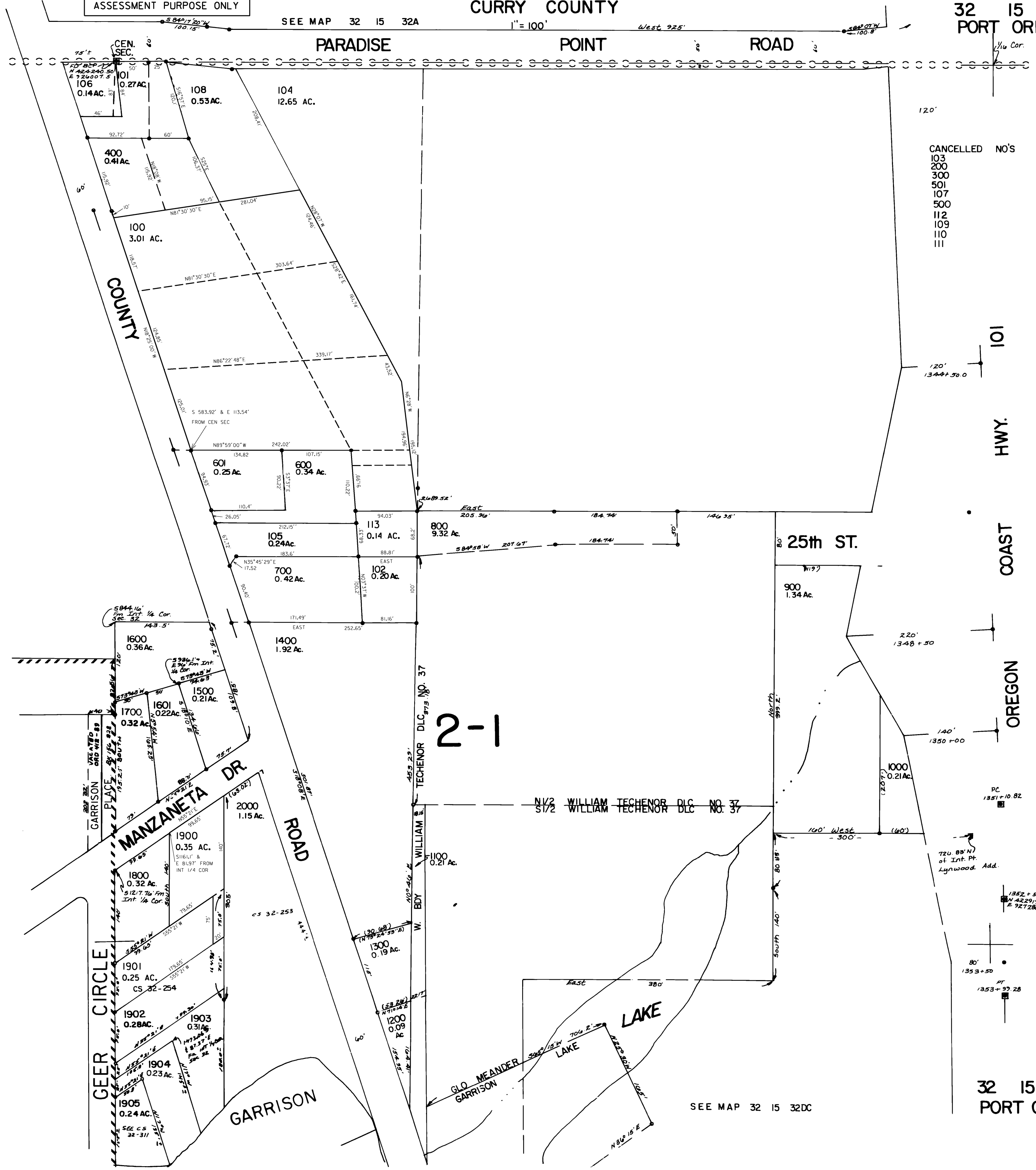
1" = 100'

West 92.5'

32 15 32DB
PORT ORFORD

SEE MAP 32 15 32C

SEE MAP 32 15 32DA



CANCELED NO'S
103
200
300
501
107
500
112
109
110
111

2-1

101
HWY.
COAST

OREGON

PC
1351+10.82
720.83' N
of Int. Pt.
Lynwood Add.

1352+55.07 PI
N 42.29' 07"
E 72.7286 53
PT
1353+97.28

SEE MAP 32 15 32DC

Revised
3/27/02, DBJ
32 15 32DB
PORT ORFORD