

T.32S. R.13W. W.M.
CURRY COUNTY

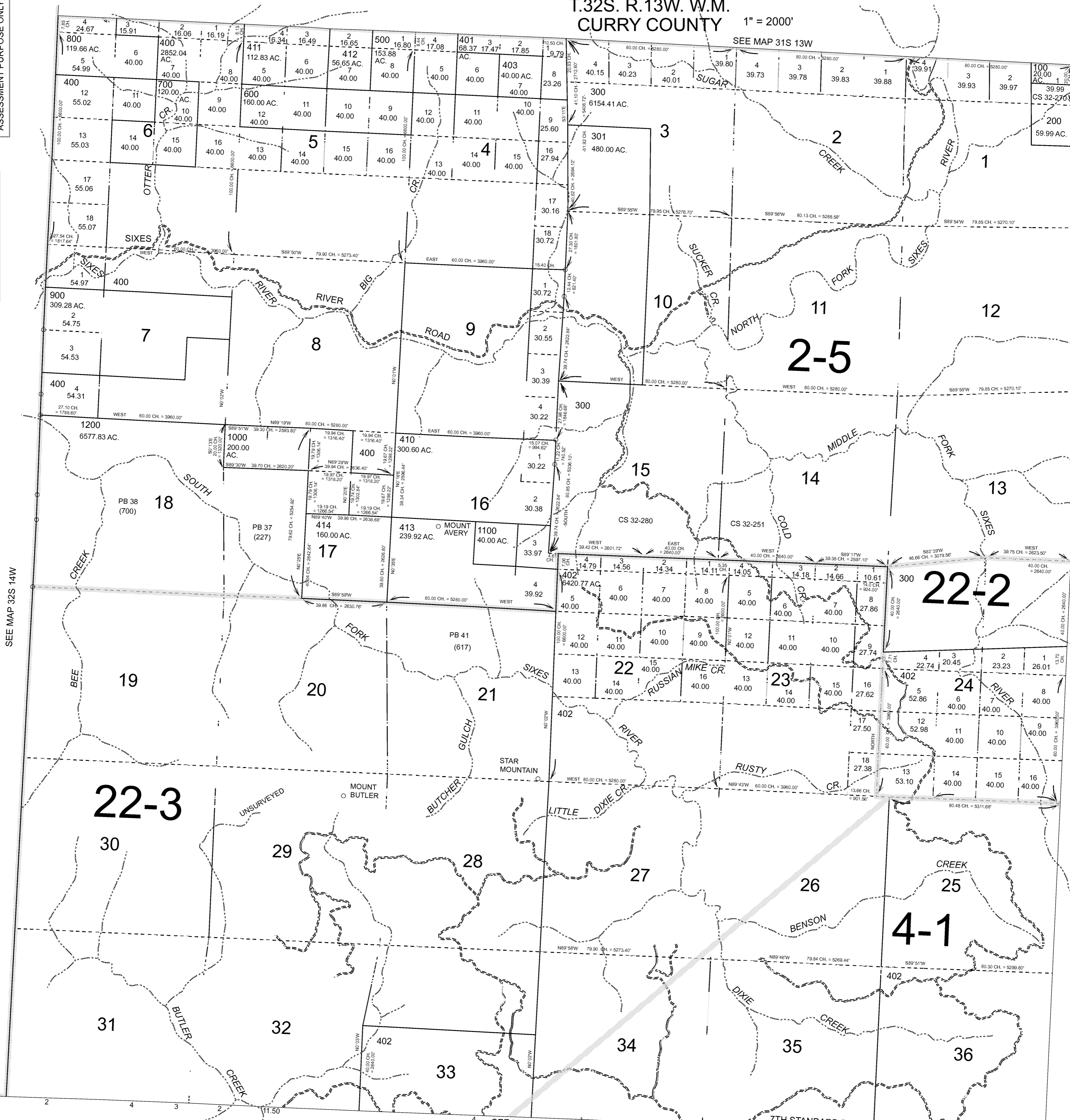
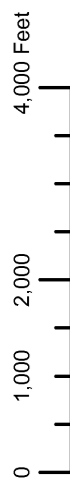
1" = 2000'

SEE MAP 31S 13W

32S13W

CANCELLED:
400A1 THRU 400A9

THIS MAP WAS PREPARED FOR
ASSESSMENT PURPOSE ONLY



SEE MAP 32S 14W

SEE MAP 32S 12W

SEE MAP 33S 13W

Revised RAA
4/17/2008

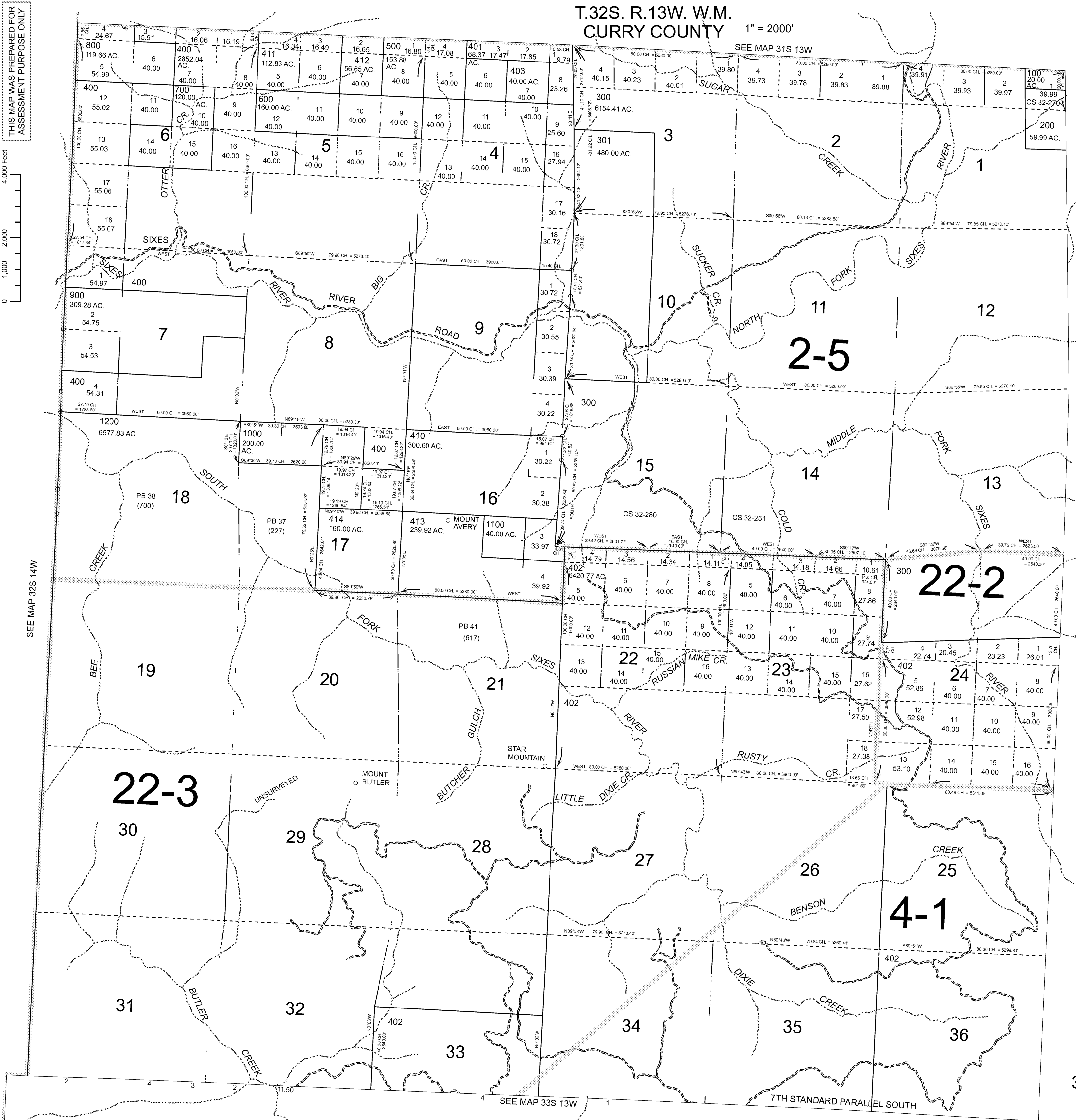
32S13W

7TH STANDARD PARALLEL SOUTH

T.32S. R.13W. W.M.
CURRY COUNTY 1" = 2000'

32S13W

CANCELLED:
400A1 THRU 400A9



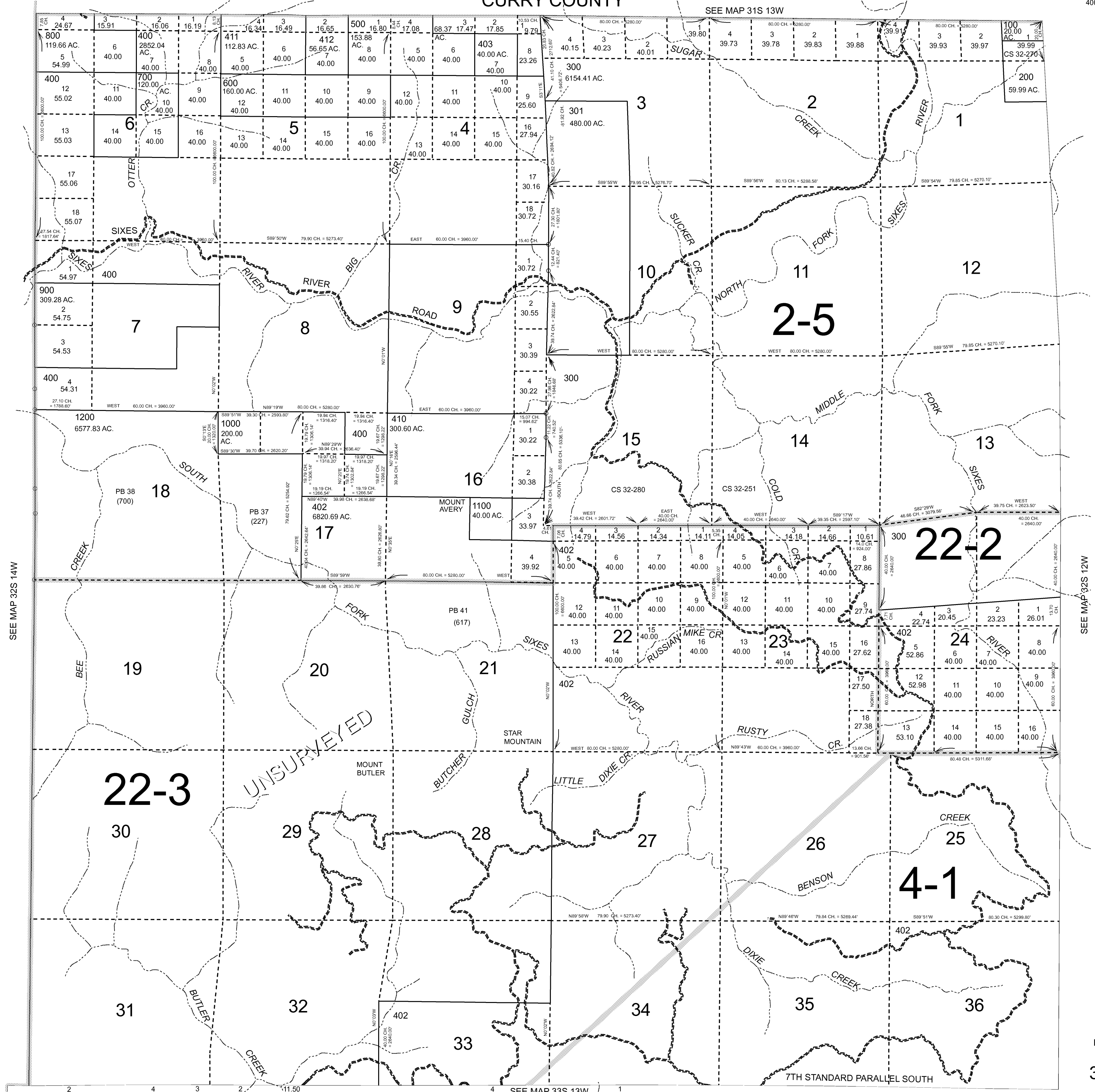
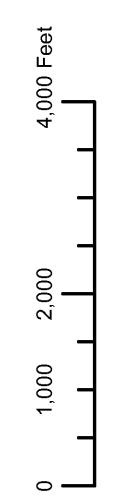
THIS MAP WAS PREPARED FOR
ASSESSMENT PURPOSE ONLY

T.32S. R.13W. W.M.
CURRY COUNTY

1" = 2000'

32S 13W
CANCELLED NO.
400A1 THRU 400A9

THIS MAP WAS PREPARED FOR
ASSESSMENT PURPOSE ONLY



SEE MAP 32S 14W

SEE MAP 32S 12W

SEE MAP 33S 13W

SEE MAP 31S 13W

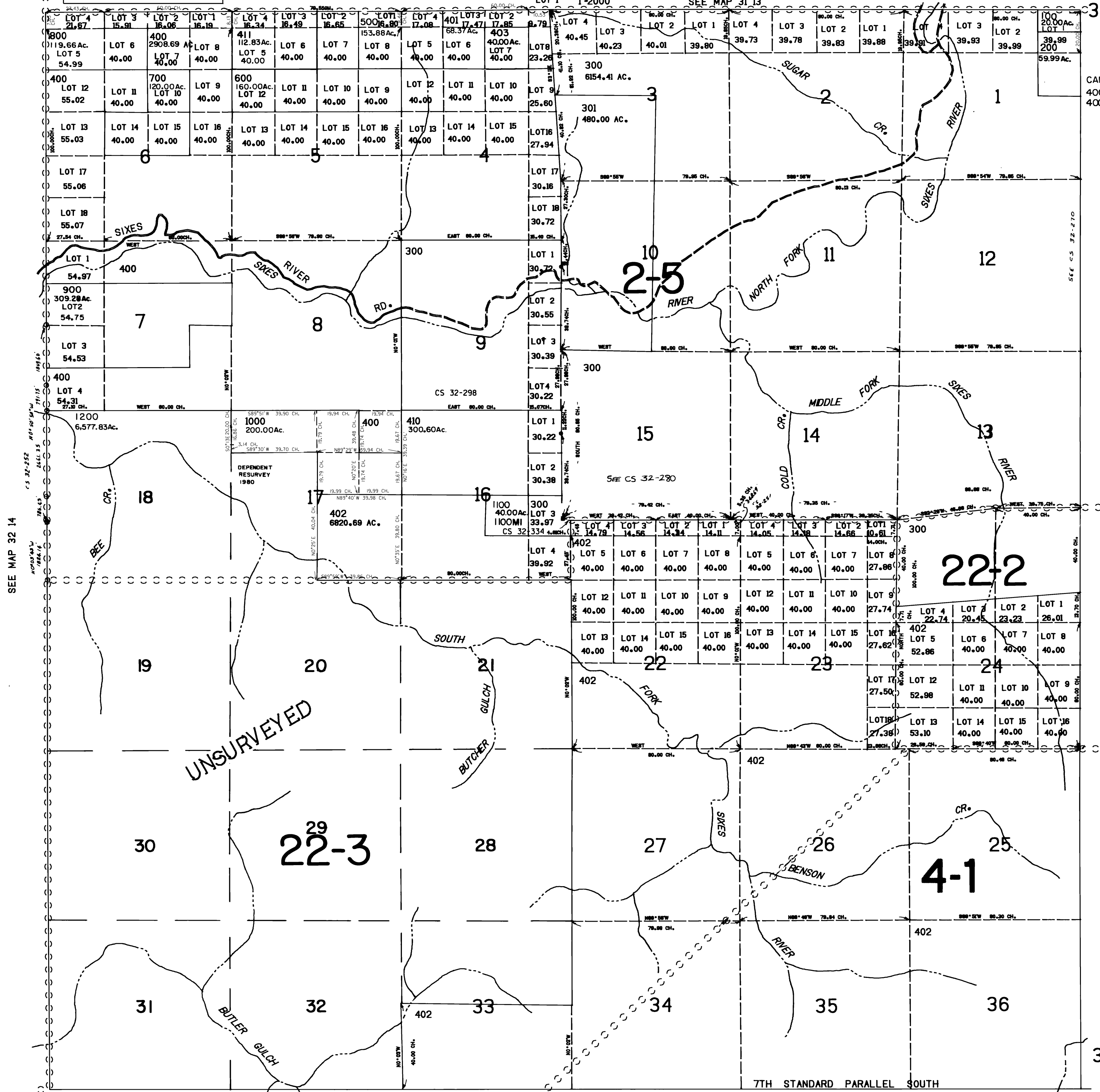
Revised by DBJ
Nov 17, 2005
32S 13W

THIS MAP WAS PREPARED FOR ASSESSMENT PURPOSE ONLY

CURRY COUNTY

LOT 1 1"-2000" SEE MAP 31 13

32 13



CANCELLED NOS 400A1 THRU 400A9

SEE MAP 32 14

SEE MAP 32 12

SEE MAP 33 13

32 13