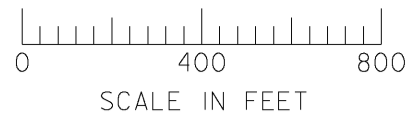


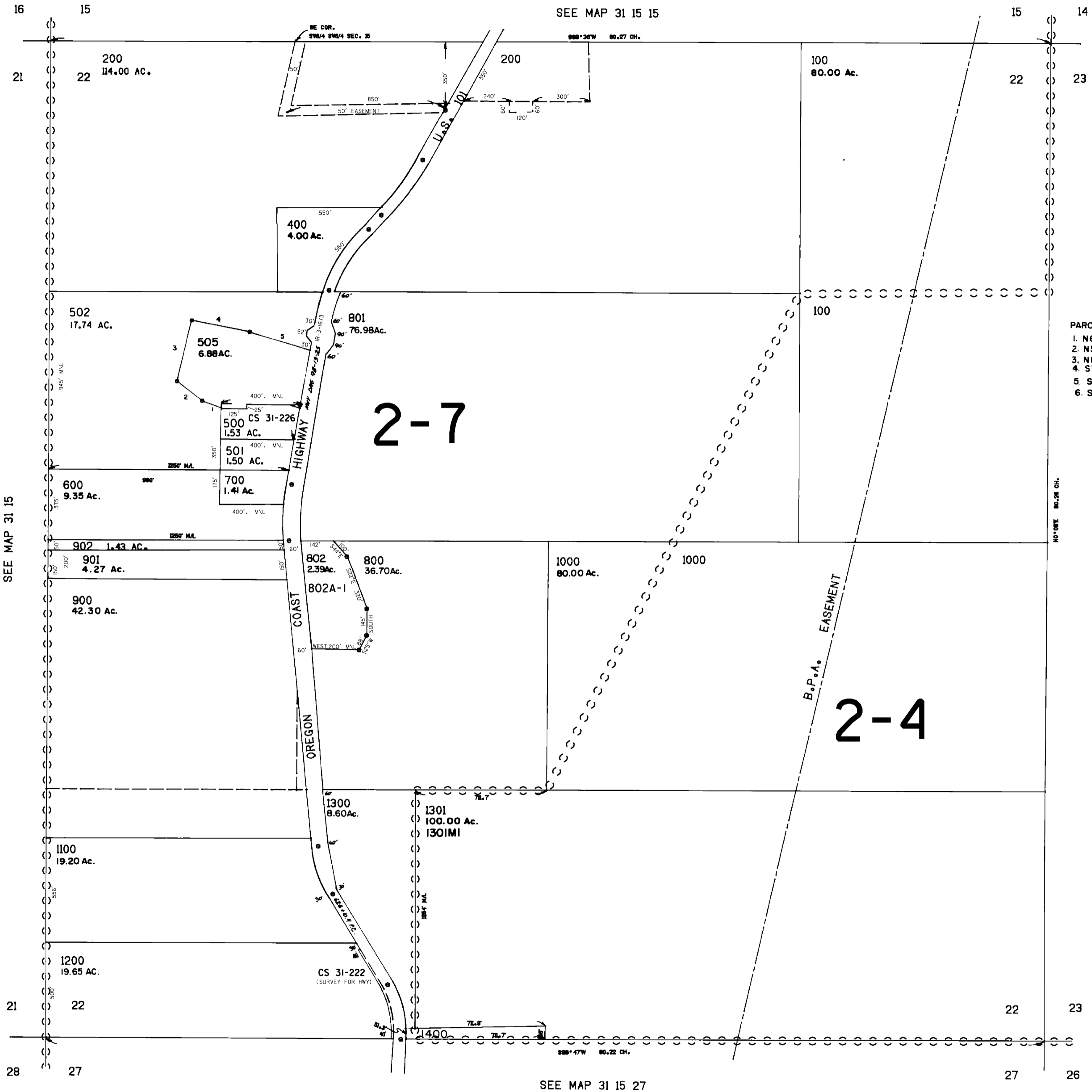
THIS MAP WAS PREPARED FOR ASSESSMENT PURPOSE ONLY



SECTION 22 T.31S. R.15W. W.M. CURRY COUNTY

1" = 400'

31S 15W 22



CANCELLED NO.'S  
300  
503  
504

PARCEL 505  
1. N69°09' W 112.55'  
2. N51°35' W 280.93'  
3. N13°23' E 329.06'  
4. S78°13' E 309.10'  
5. S69°58' E 441.23'  
6. S8°51' W 313.83'

SEE MAP 31 15

SEE MAP 31 15

SEE MAP 31 15 27

Revised 8/22/2007, RAA

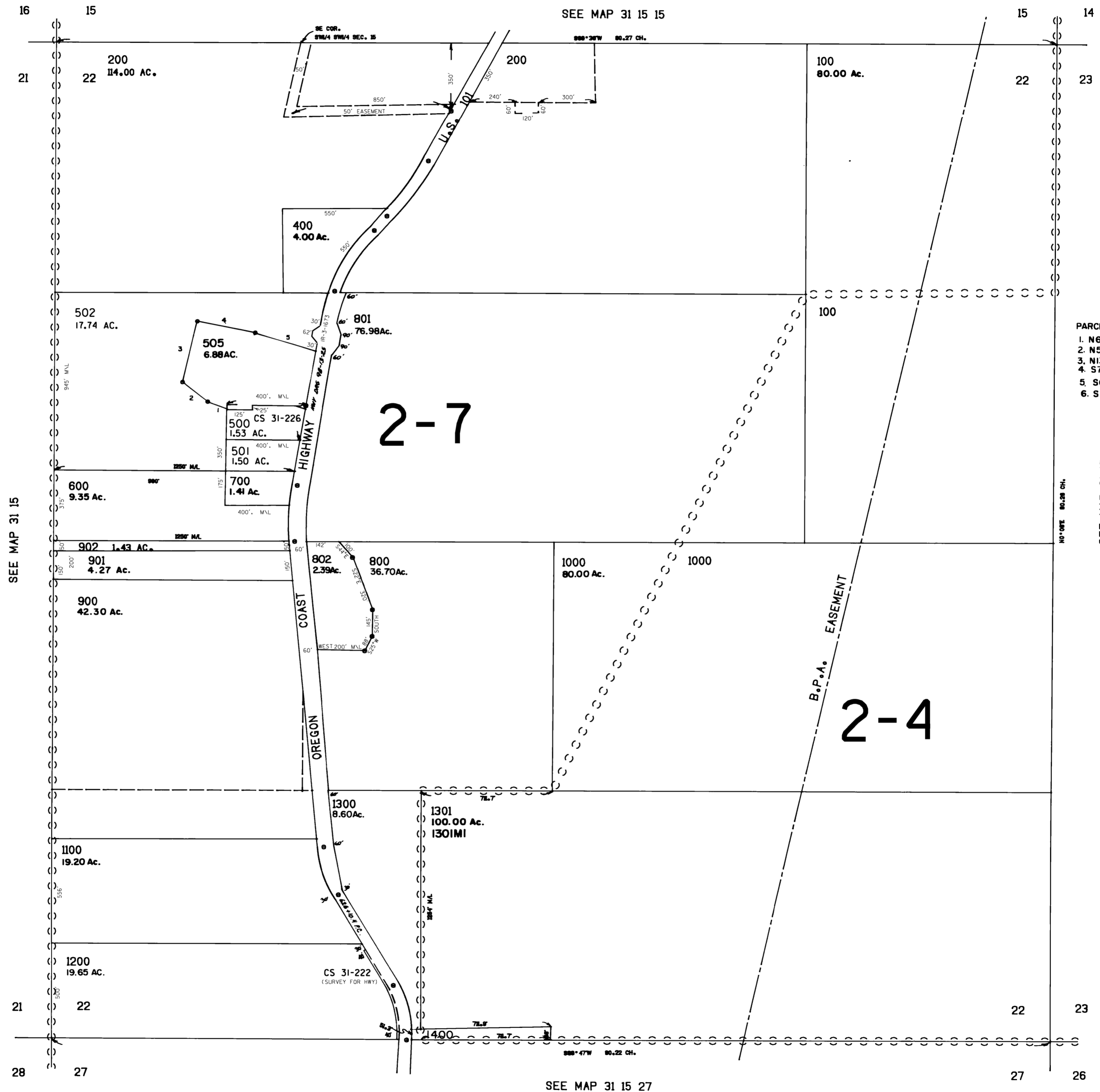
31S 15W 22

THIS MAP WAS PREPARED FOR  
ASSESSMENT PURPOSE ONLY

SECTION 22. T.31S. R.15W. W.M.  
CURRY COUNTY

31 15 22

1"=400'



CANCELLED NO.'S

- 300
- 503
- 504

- PARCEL 505
- 1. N69°09'W 112.55'
  - 2. N51°35'W 280.93'
  - 3. N13°23'E 329.06'
  - 4. S78°13'E 309.10'
  - 5. S69°58'E 441.23'
  - 6. S8°51'W 313.83'

SEE MAP 31 15

Revised  
9/15/2004, DBJ

31 15 22