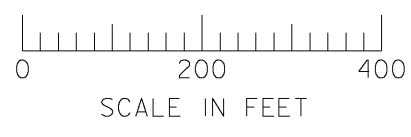


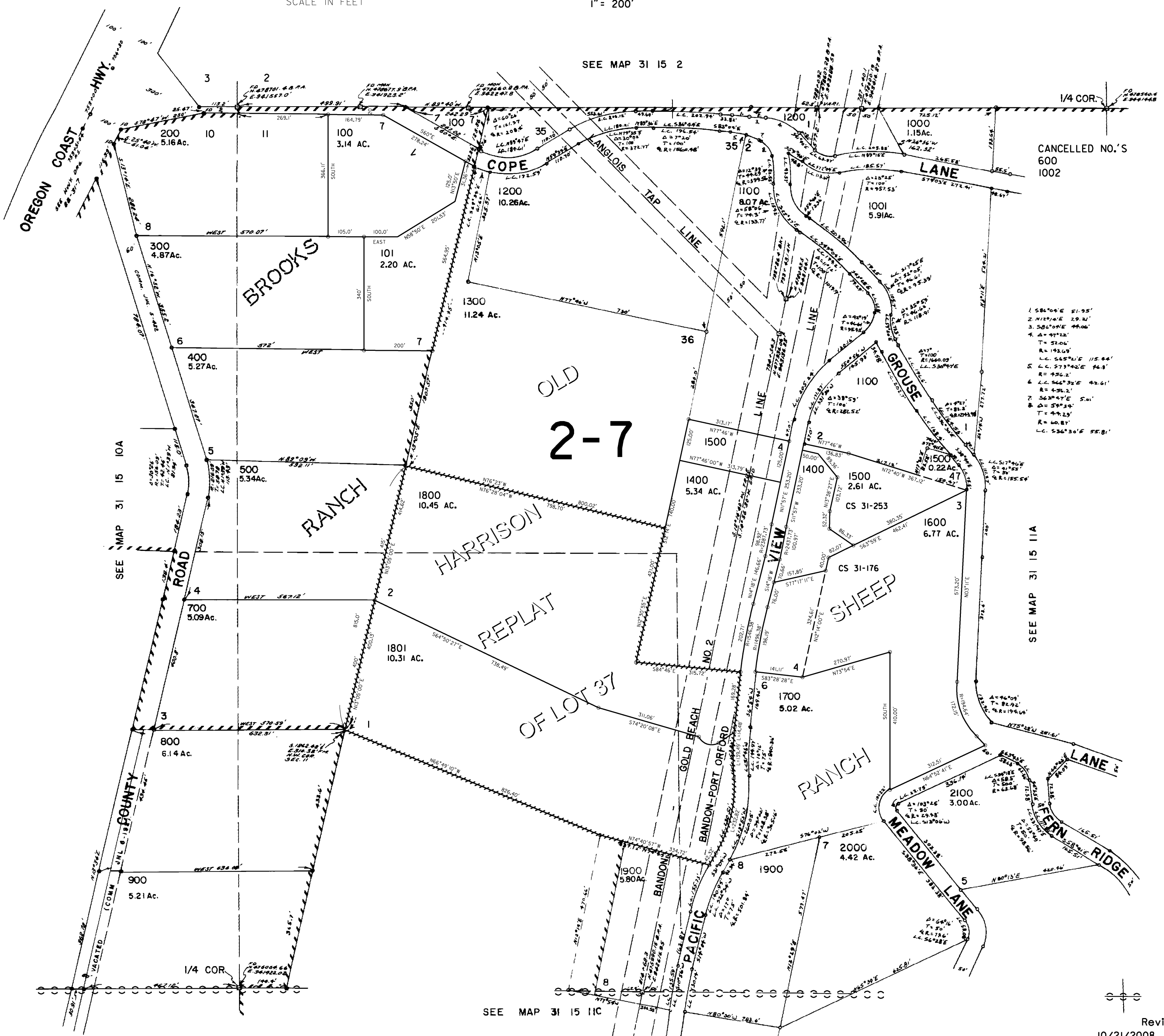
THIS MAP WAS PREPARED FOR ASSESSMENT PURPOSE ONLY



NW1/4 SEC II T.31S. R.15W W.M. CURRY COUNTY

31 15 11B

1" = 200'



SEE MAP 31 15 2

CANCELLED NO.'S 600 1002

- 1 S84°00'E 51.95'
2 N10°00'E 29.22'
3 S82°00'E 44.00'
4 A = 97°12'
T = 32.04'
R = 193.09'
5 L.C. 545°21'E 115.44'
R = 430.2'
6 L.C. 346°32'E 42.61'
R = 430.2'
7 S63°47'E 5.01'
8 A = 54°25'
T = 44.25'
R = 40.87'
L.C. 536°30'E 55.81'

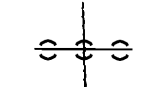
OLD 2-7

OF LOT 37

2-4

SEE MAP 31 15 11C

SEE MAP 31 15 11A

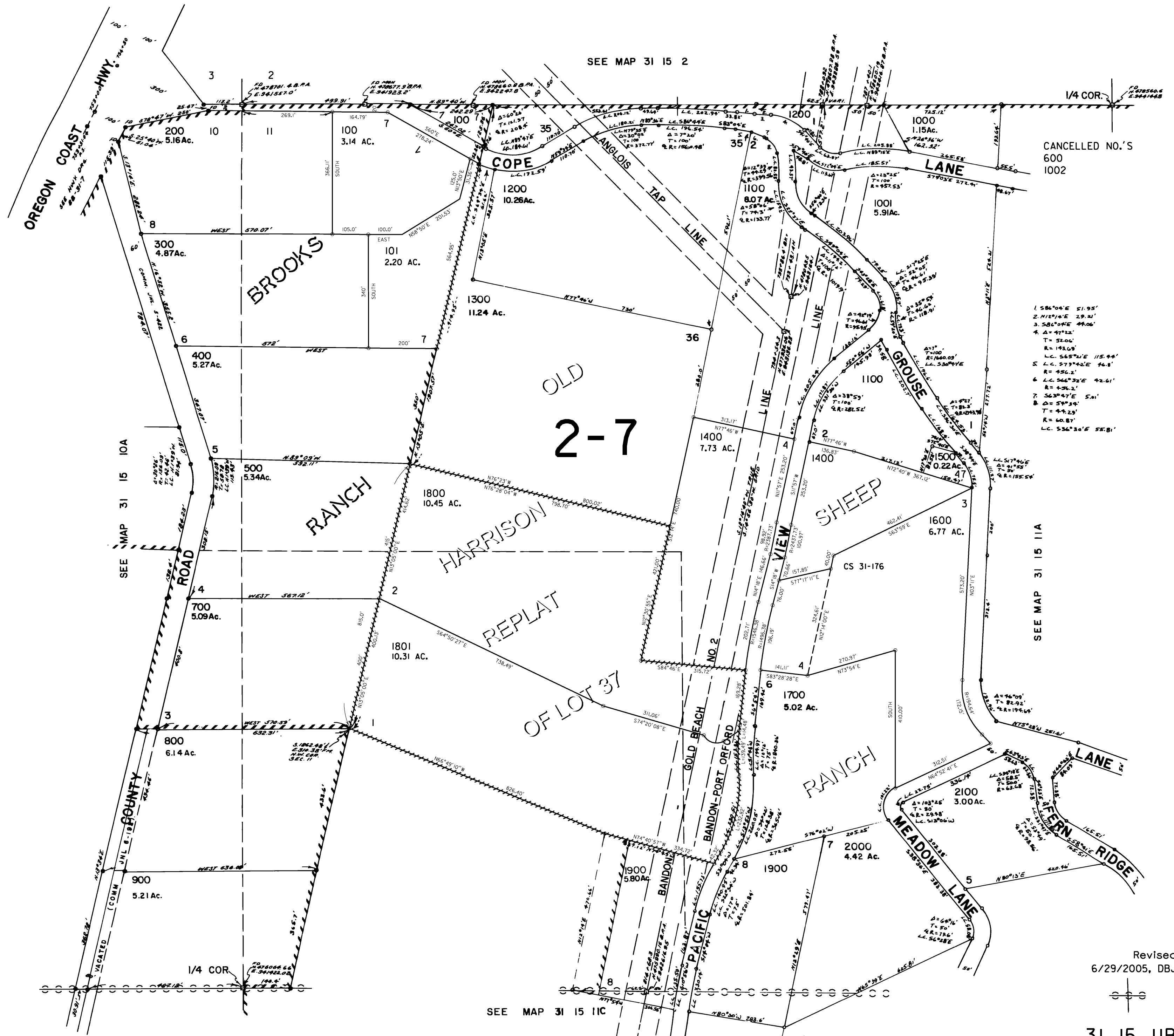


Revised 10/21/2008, RAA 31 15 11B

THIS MAP WAS PREPARED FOR ASSESSMENT PURPOSE ONLY

NW1/4 SEC II T.31S. R.15W W.M.
CURRY COUNTY

1" = 200'



CANCELLED NO.'S
600
1002

- 1. S86°06'E 51.95'
- 2. N72°09'E 29.21'
- 3. S84°09'E 49.06'
- 4. A=47°12'
- T=52.06'
- R=193.69'
- 5. L.C. S65°24'E 115.94'
- L.C. S79°42'E 94.81'
- R=956.2'
- 6. L.C. S66°32'E 92.61'
- R=456.2'
- 7. S63°47'E 5.01'
- A=57°39'
- T=44.23'
- R=60.87'
- L.C. S36°30'E 55.81'

SEE MAP 31 15 11C

SEE MAP 31 15 11A

Revised
6/29/2005, DBJ

