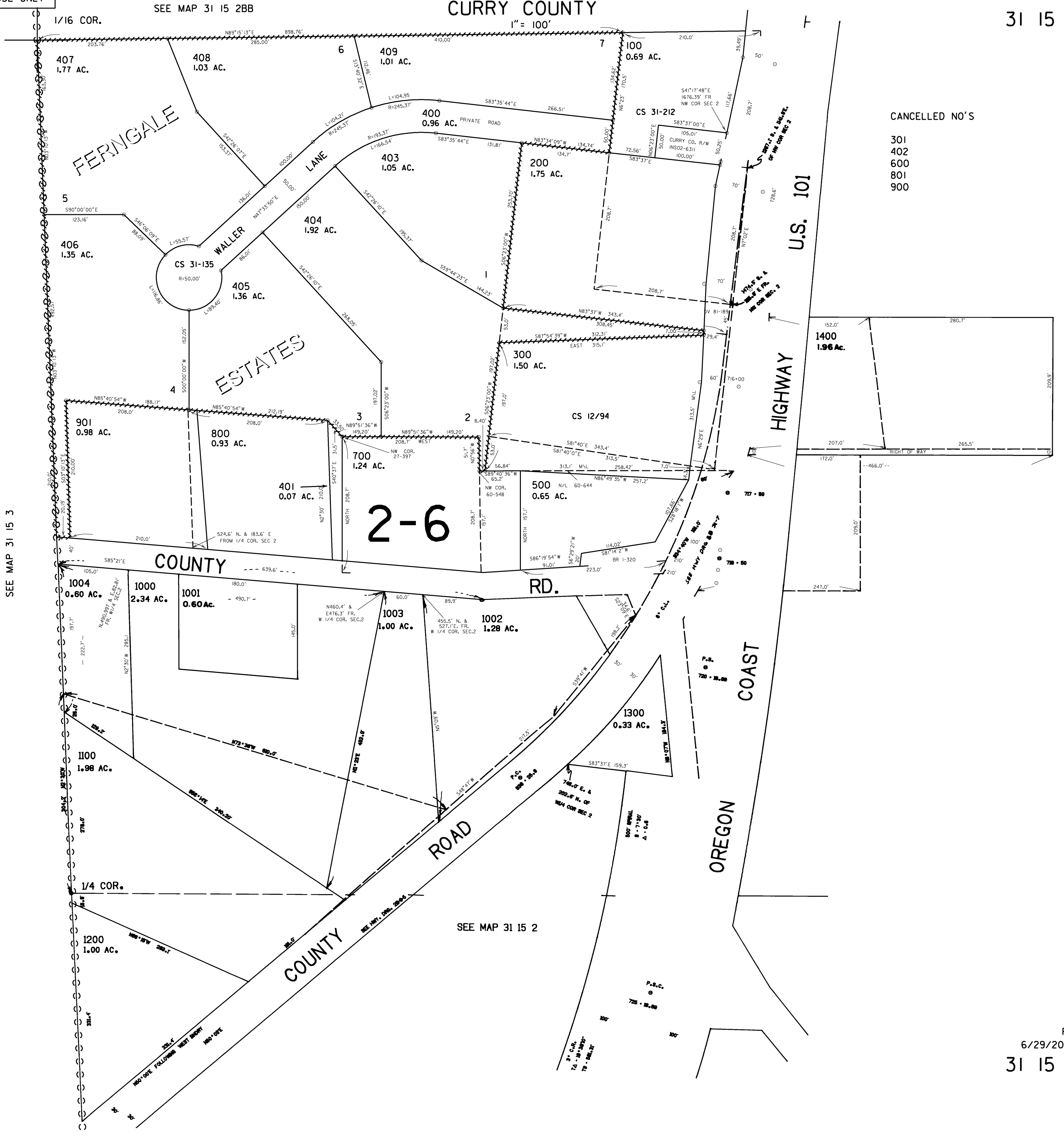


THIS MAP WAS PREPARED FOR ASSESSMENT PURPOSE ONLY

SW1/4 NW1/4 SEC. 2 T.31S. R.15W. W.M. CURRY COUNTY

31 15 2BC



SEE MAP 31 15 2BB

1" = 100'

1/16 COR.

407
1.77 AC.

408
1.03 AC.

409
1.01 AC.

100
0.69 AC.

FERNGALE

LANE

400
0.96 AC.

403
1.05 AC.

200
1.75 AC.

CS 31-212

CANCELLED NO'S

- 301
- 402
- 600
- 801
- 900

5

406
1.35 AC.

CS 31-135

404
1.92 AC.

405
1.36 AC.

U.S. 101

ESTATES

300
1.50 AC.

HIGHWAY

1400
1.96 AC.

901
0.98 AC.

800
0.93 AC.

700
1.24 AC.

500
0.65 AC.

2-6

SEE MAP 31 15 3

COUNTY

RD.

1004
0.60 AC.

1000
2.34 AC.

1001
0.60 AC.

1003
1.00 AC.

1002
1.28 AC.

COAST

1100
1.98 AC.

1300
0.33 AC.

1/4 COR.

1200
1.00 AC.

COUNTY

SEE MAP 31 15 2

OREGON