

THIS MAP WAS PREPARED FOR
ASSESSMENT PURPOSE ONLY

NW1/4 NE1/4 SEC. 17 T.31S. R.15W. W.M.
CURRY COUNTY

31 15 17AB

1" = 100'

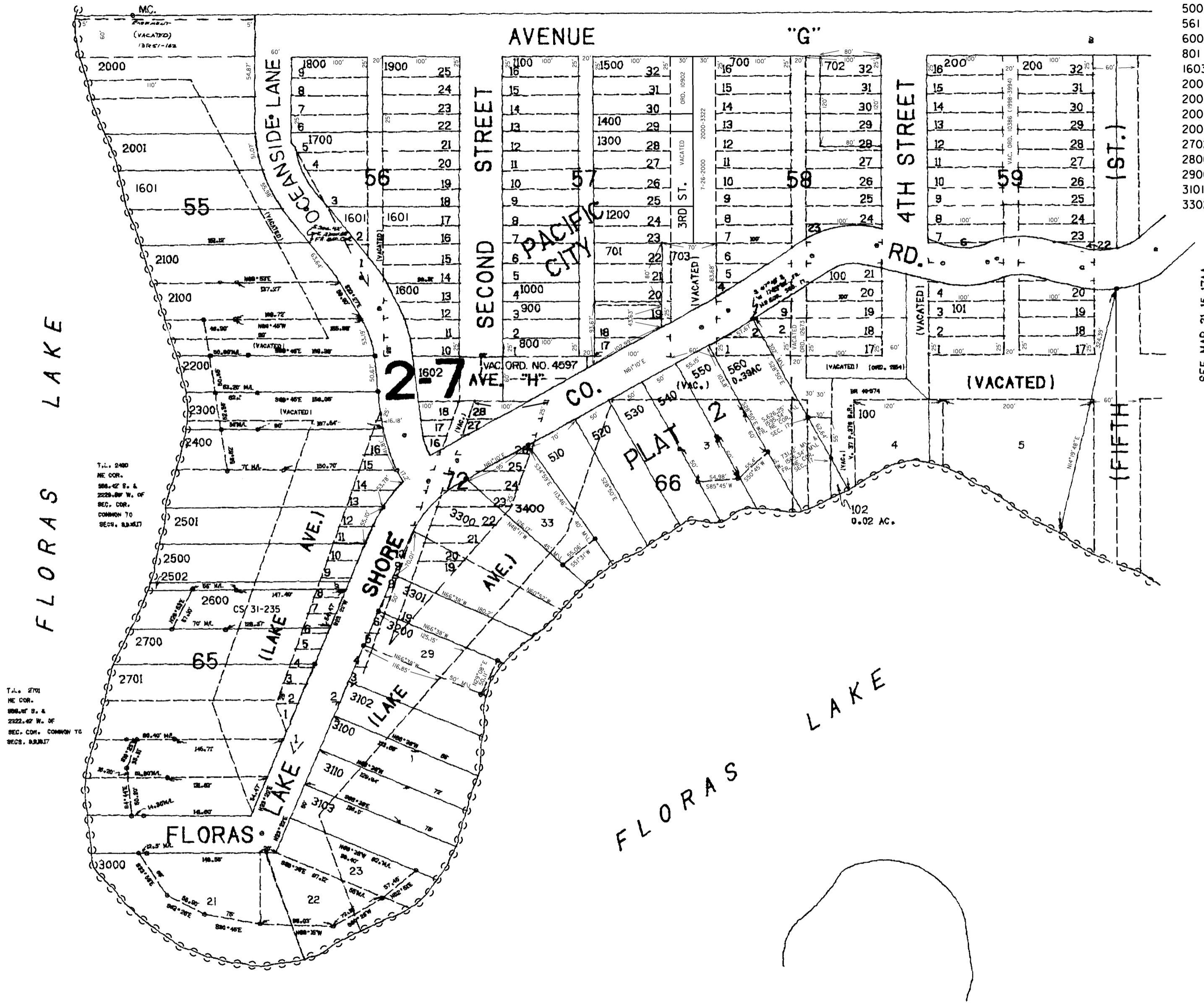


SEE MAP 31 15 8

- CANCELLED NO.
- 103
- 300
- 400
- 500
- 561
- 600
- 801
- 1603
- 2002
- 2003
- 2004
- 2005
- 2702
- 2800
- 2900
- 3101
- 3302

SEE MAP 31 15 17

SEE MAP 31 15 17AA



SEE MAP 31 15 17

Revised
8/17/2009, RAA
31 15 17AB

THIS MAP WAS PREPARED FOR
ASSESSMENT PURPOSE ONLY

NW1/4 NE1/4 SEC. 17 T.31S. R.15W. W.M.
CURRY COUNTY

31 15 17AB

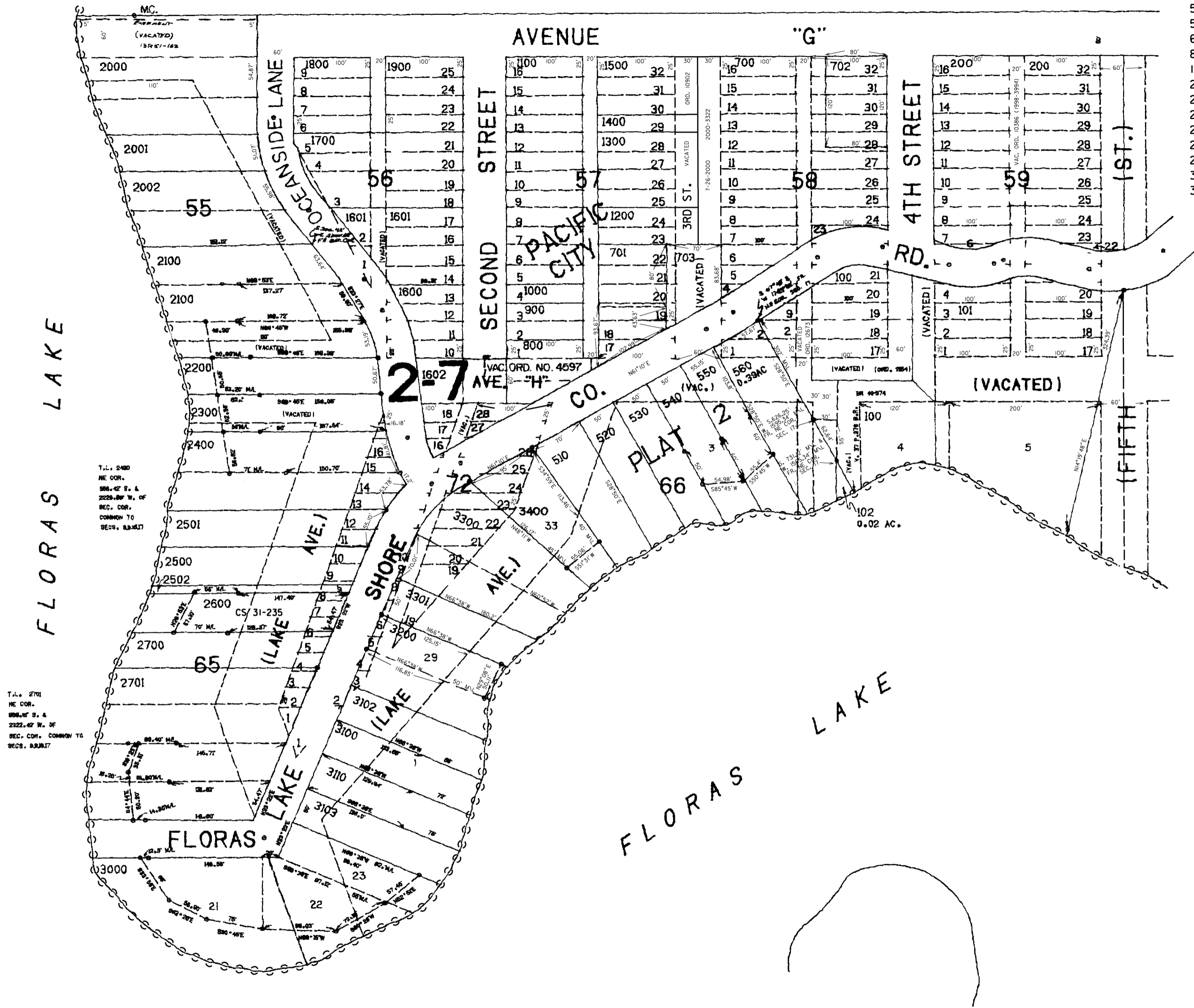
1" = 100'



SEE MAP 31 15 8

SEE MAP 31 15 17

SEE MAP 31 15 17AA



- CANCELLED NO.
- 103
- 300
- 400
- 500
- 561
- 600
- 801
- 1603
- 2003
- 2004
- 2005
- 2702
- 2800
- 2900
- 3101
- 3302

SEE MAP 31 15 17

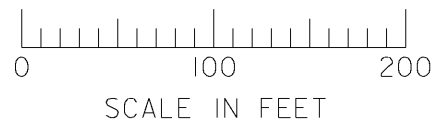
THIS MAP WAS PREPARED FOR
ASSESSMENT PURPOSE ONLY

NW1/4 NE1/4 SEC. 17 T.31S. R.15W. W.M.
CURRY COUNTY

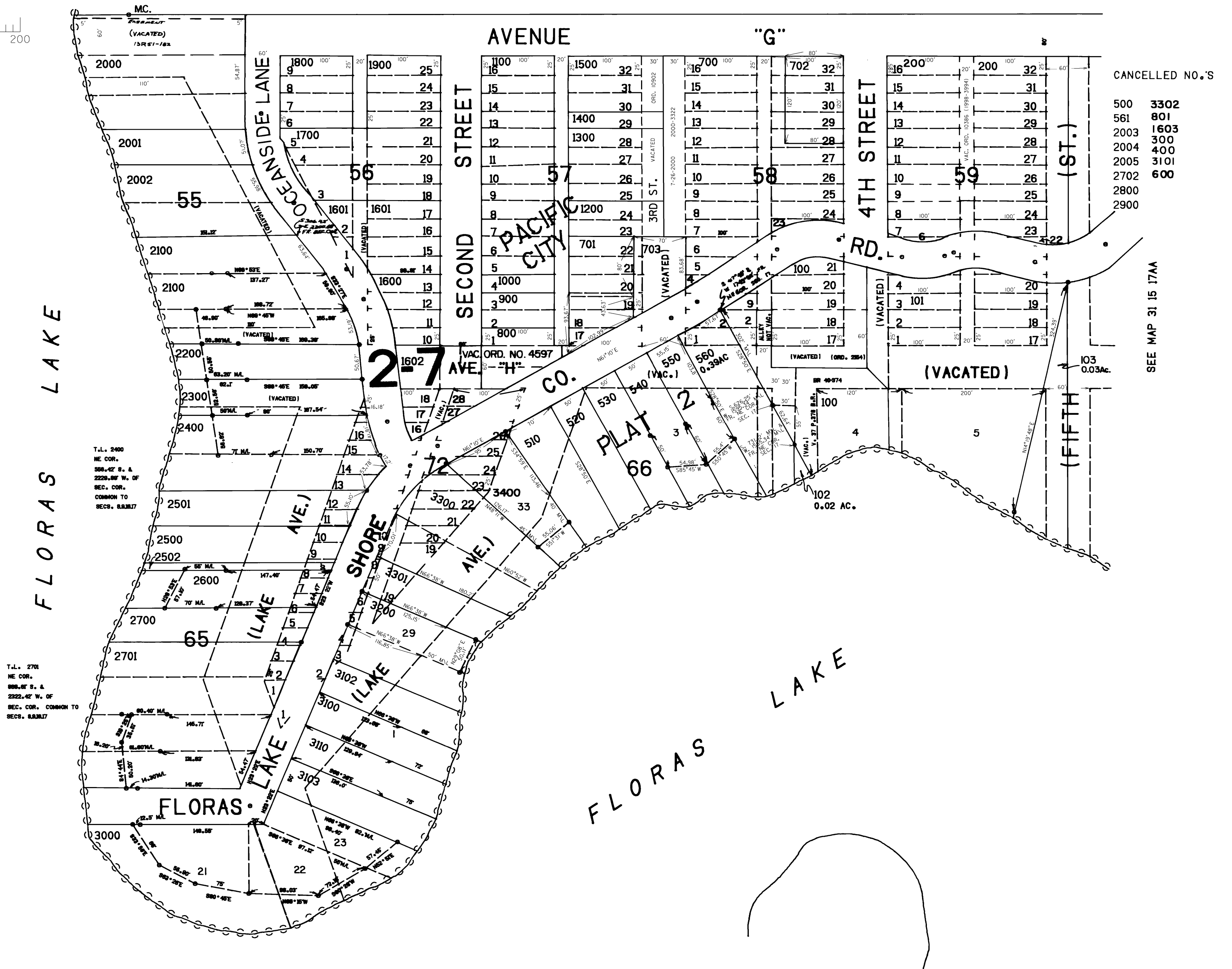
31 15 17AB

1" = 100'

SEE MAP 31 15 8



SEE MAP 31 15 17



CANCELLED NO.'S

- 500 3302
- 561 801
- 2003 1603
- 2004 300
- 2005 400
- 2005 3101
- 2702 600
- 2800
- 2900

SEE MAP 31 15 17A

SEE MAP 31 15 17

Revised 8/9/00, CS

31 15 17AB