

THIS MAP WAS PREPARED FOR
ASSESSMENT PURPOSE ONLY

SE1/4 SEC. 11 T.31 S. R.15 W. W.M.
CURRY COUNTY

31 15 IID

1" = 200'

2-7

SEE MAP 31 15 11A

E 1/4 COR.

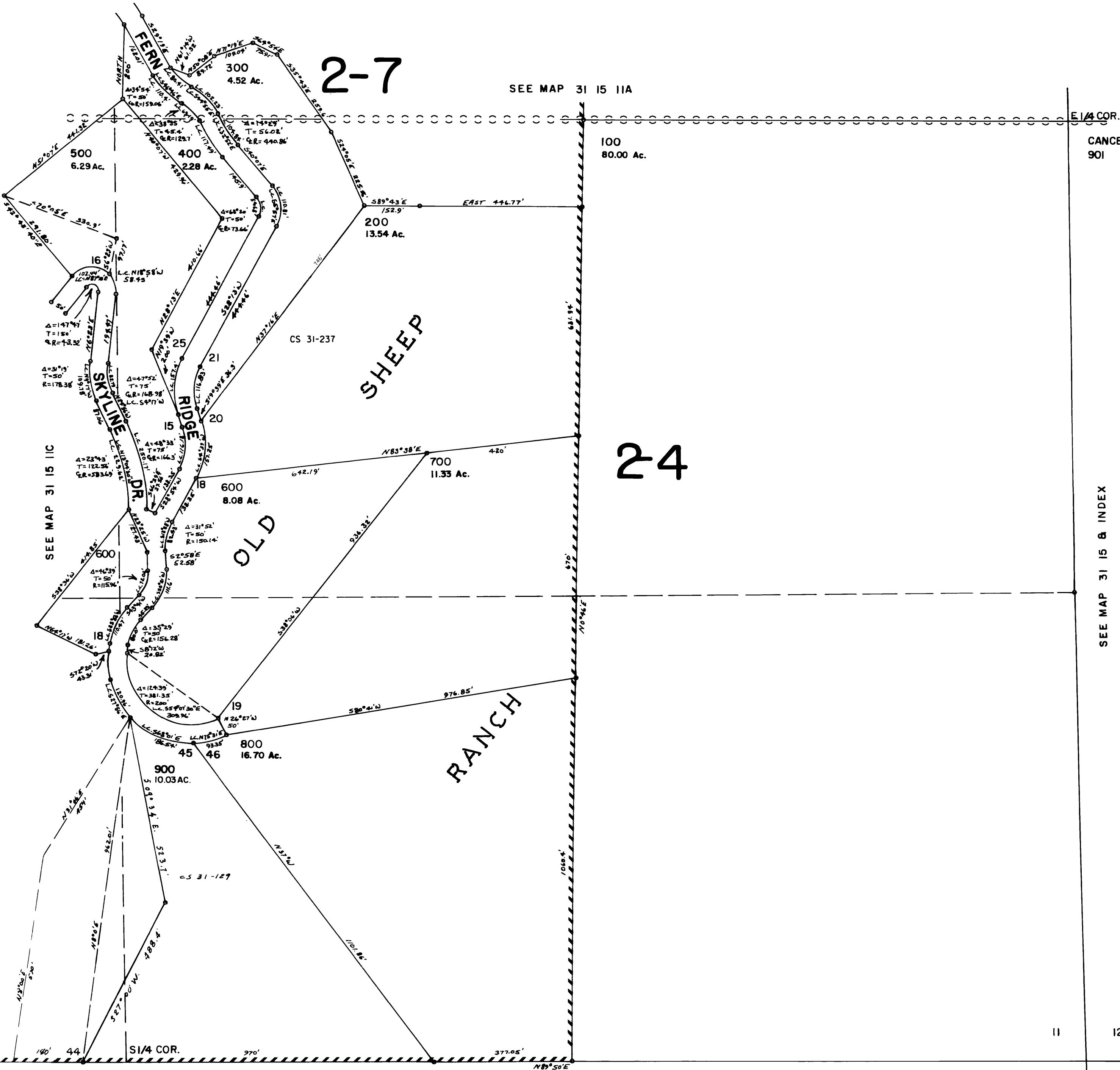
CANCELLED NO.'S
901

100
80.00 Ac.

SHEEP

24

SEE MAP 31 15 & INDEX



SEE MAP 31 15 & INDEX

11

12

14

13

Revised
1/25/2006, DBJ

31 15 IID

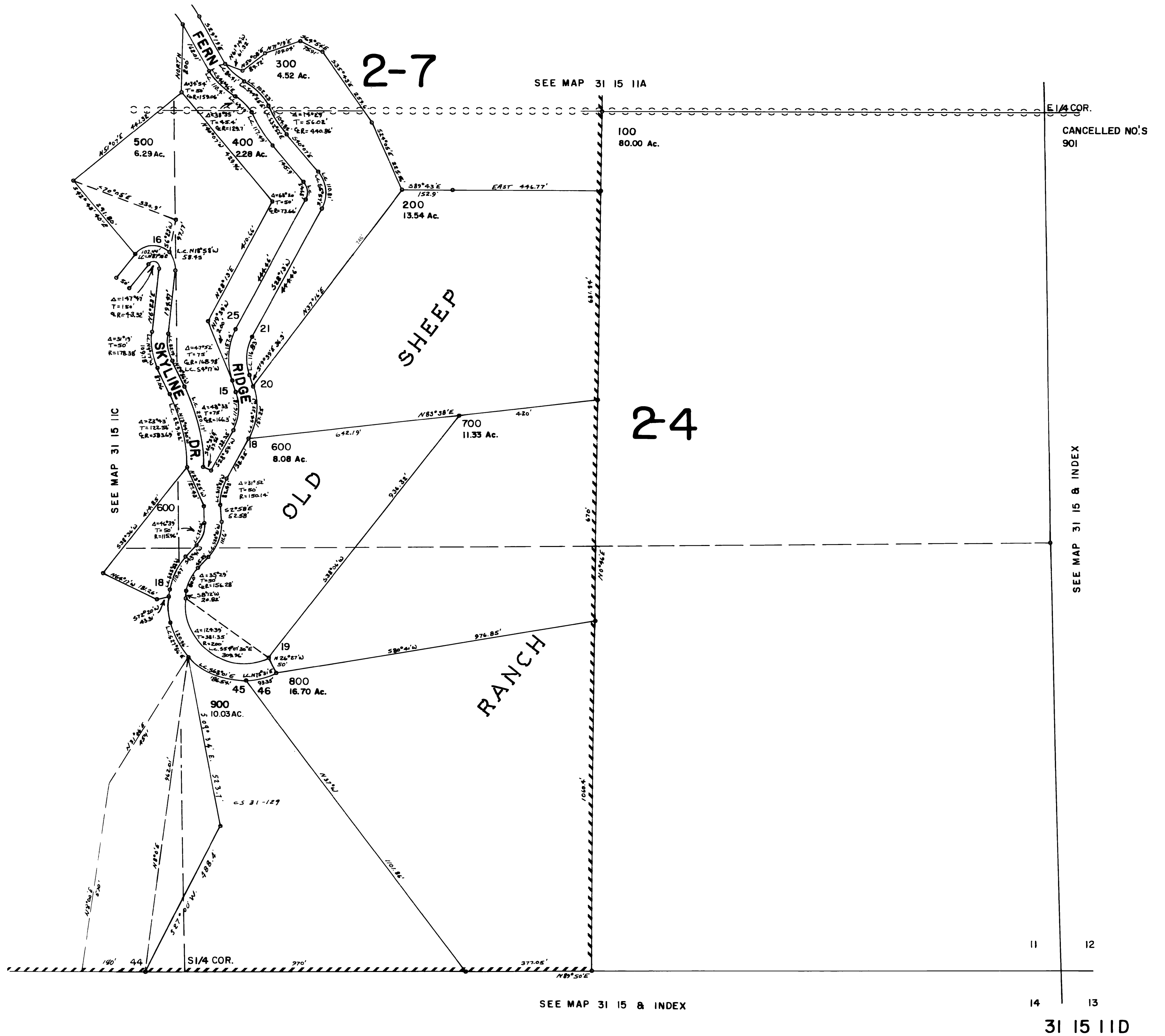
THIS MAP WAS PREPARED FOR
ASSESSMENT PURPOSE ONLY

SE1/4 SEC. 11 T.31 S. R.15 W. W.M.

31 15 11D

CURRY COUNTY

1" = 200'



E1/4 COR.
CANCELLED NO.'S
901

SEE MAP 31 15 8 INDEX

SEE MAP 31 15 8 INDEX

11 12
14 13

31 15 11D