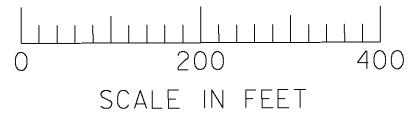


THIS MAP WAS PREPARED FOR
ASSESSMENT PURPOSE ONLY

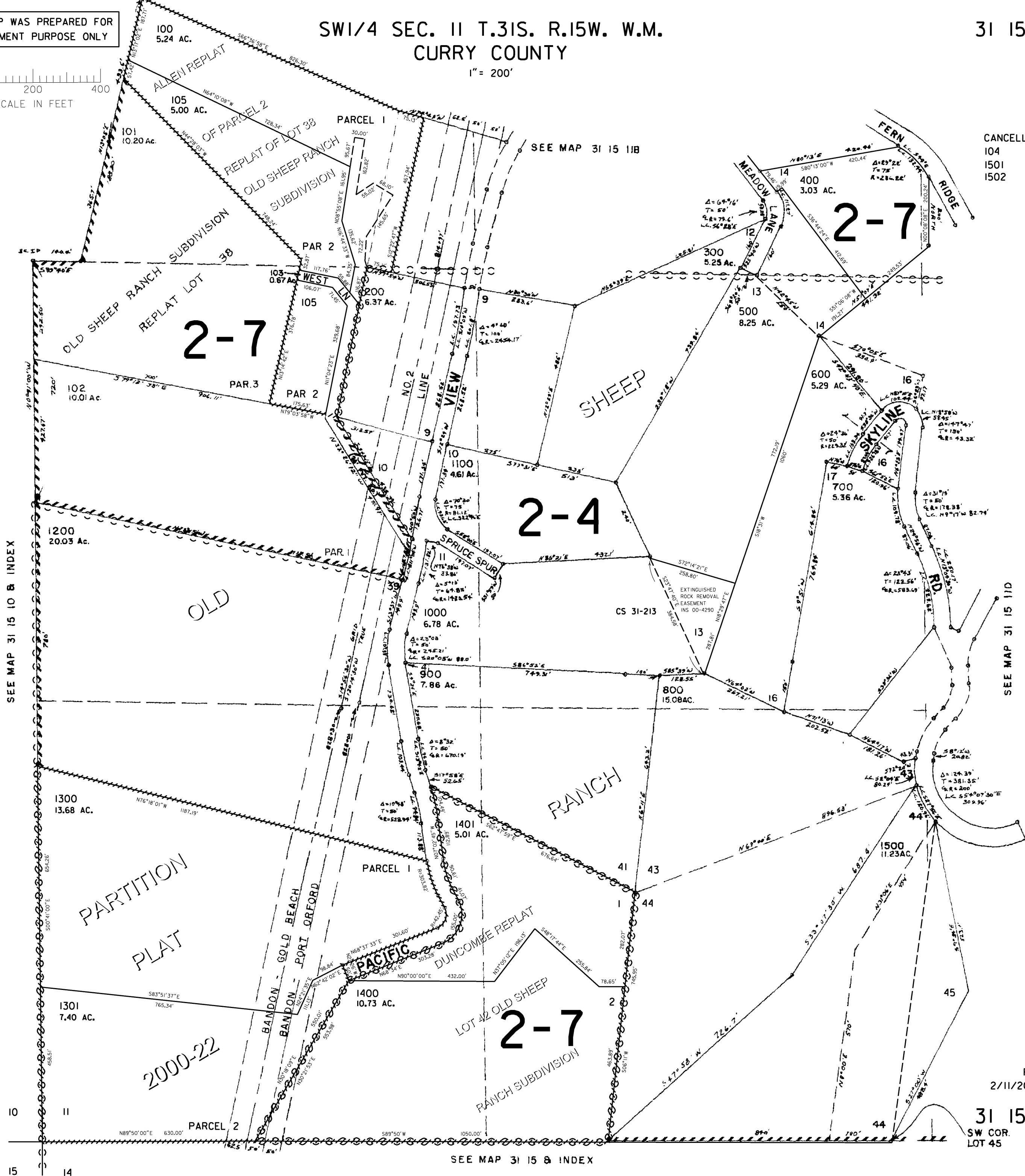
SW1/4 SEC. 11 T.31S. R.15W. W.M.
CURRY COUNTY

31 15 11C



1" = 200'

CANCELLED NO.
104
1501
1502



SEE MAP 31 15 10 B INDEX

SEE MAP 31 15 11D

SEE MAP 31 15 8 INDEX

Revised
2/11/2010 RAA

31 15 11C
SW COR.
LOT 45

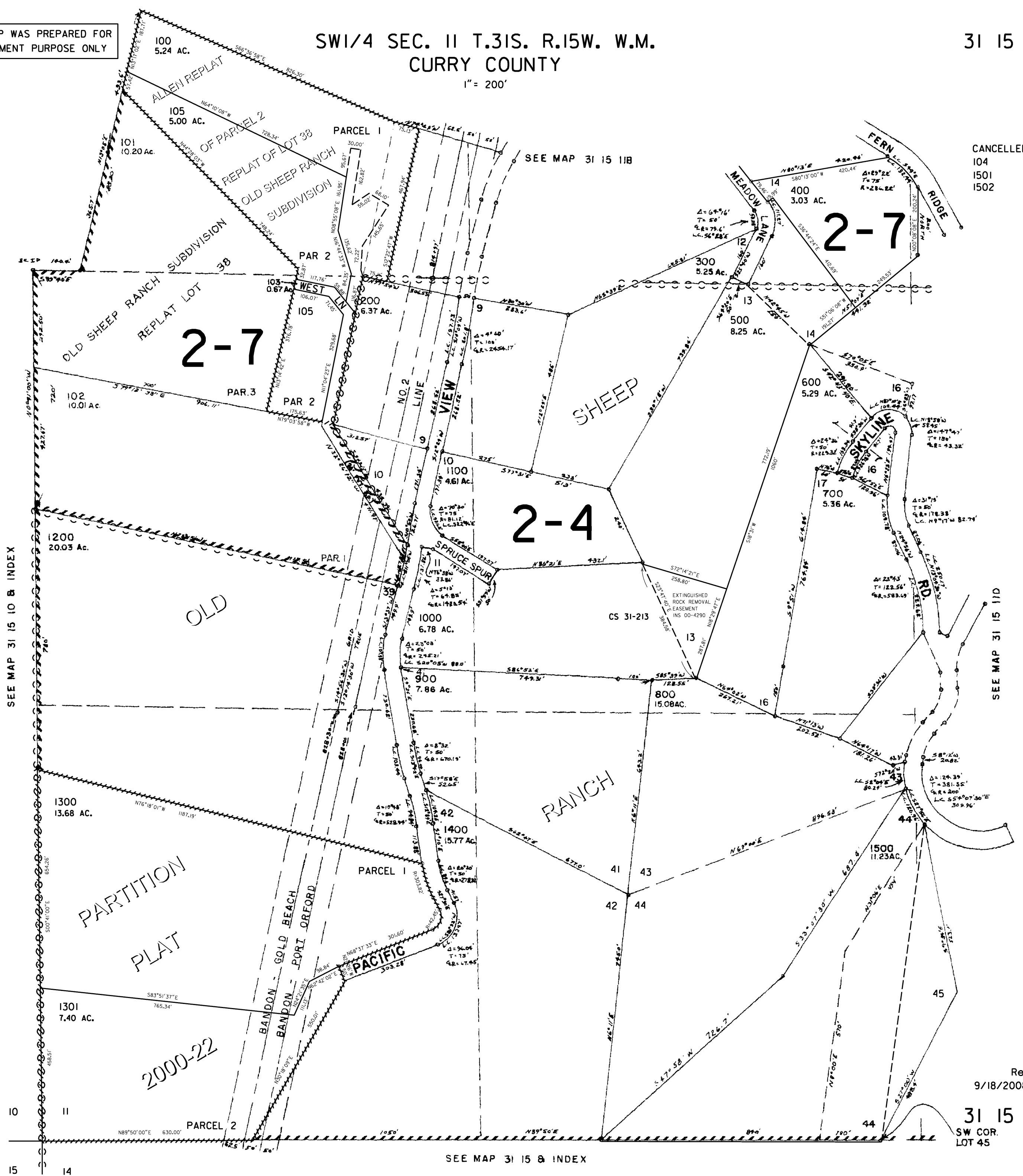
THIS MAP WAS PREPARED FOR ASSESSMENT PURPOSE ONLY

SW1/4 SEC. II T.31S. R.15W. W.M. CURRY COUNTY

31 15 11C

1" = 200'

CANCELLED NO.
104
1501
1502



Revised
9/18/2008 RAA

31 15 11C

SW COR.
LOT 45

\$TIMES
\$DATES\$
\$FILES\$
\$USERNAMES\$

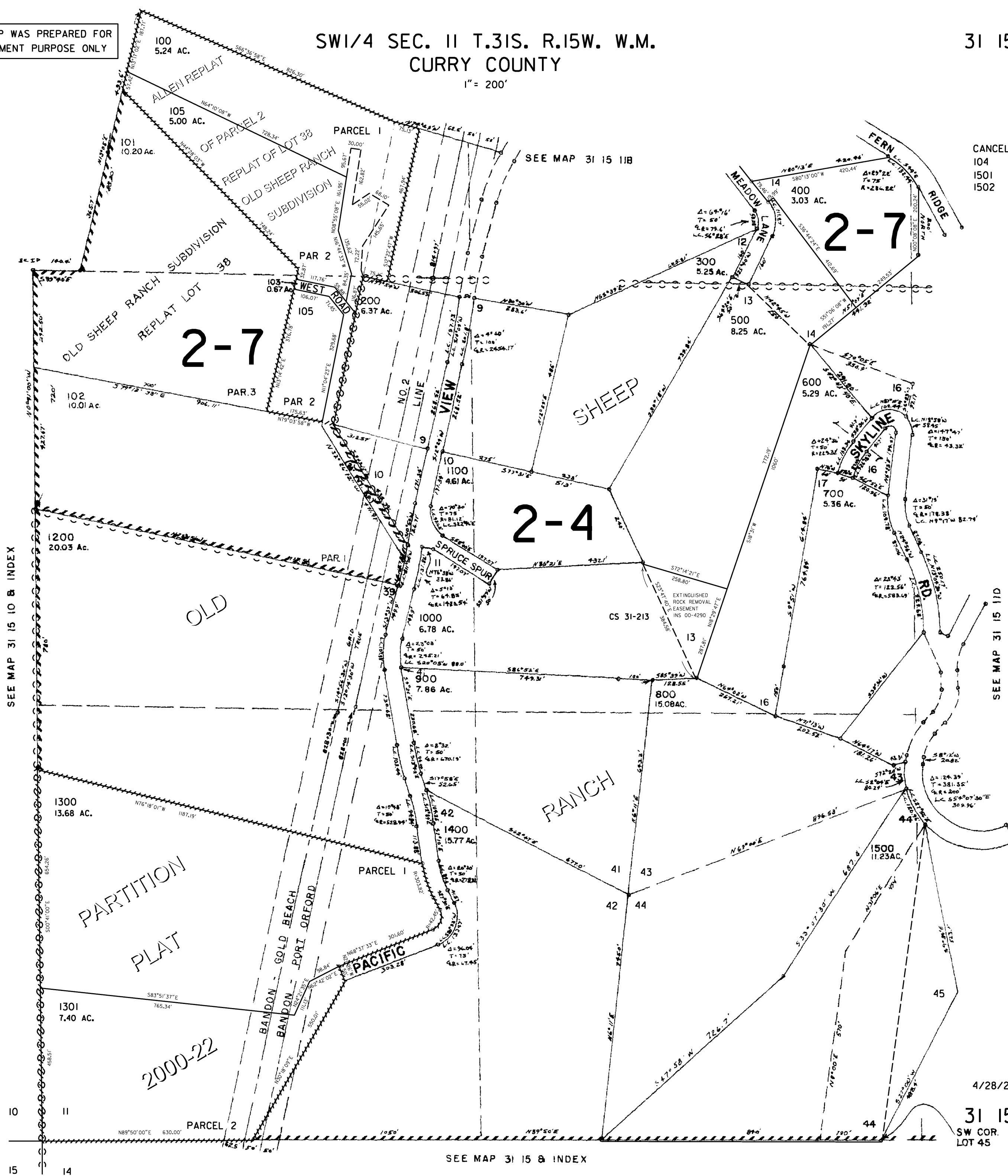
THIS MAP WAS PREPARED FOR ASSESSMENT PURPOSE ONLY

SW1/4 SEC. II T.31S. R.15W. W.M. CURRY COUNTY

31 15 11C

1" = 200'

CANCELLED NO. 104 1501 1502



\$TIMES

\$DATES

\$FILES

\$USERNAMES

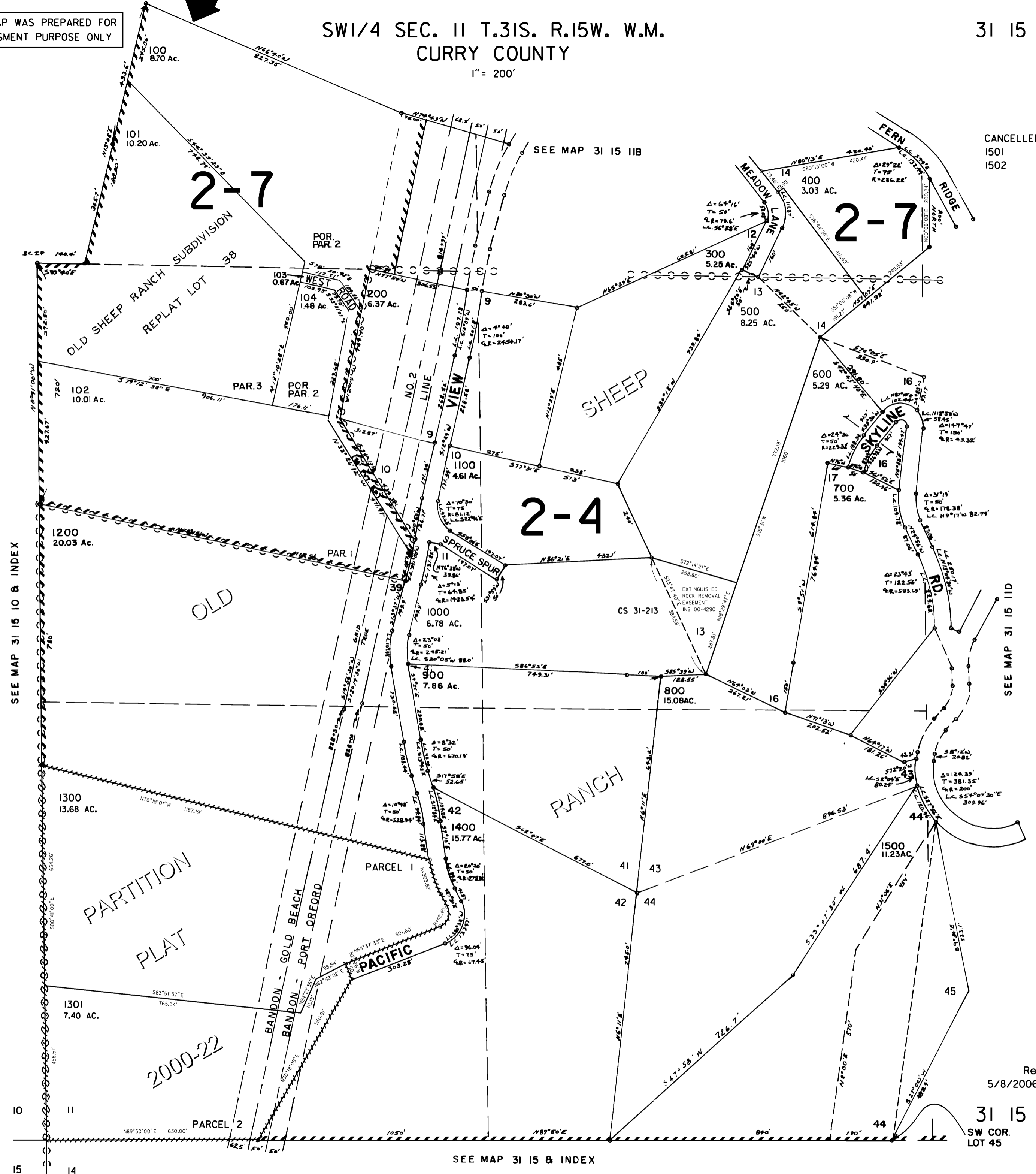
THIS MAP WAS PREPARED FOR ASSESSMENT PURPOSE ONLY

SW1/4 SEC. II T.31S. R.15W. W.M.
CURRY COUNTY

31 15 11C

1" = 200'

CANCELLED NO.
1501
1502



SEE MAP 31 15 10 B INDEX

SEE MAP 31 15 11D

SEE MAP 31 15 & INDEX

Revised
5/8/2006, DBJ

31 15 11C

SW COR.
LOT 45

\$TIMES\$
\$DATES\$
\$FILES\$
\$USERNAME\$

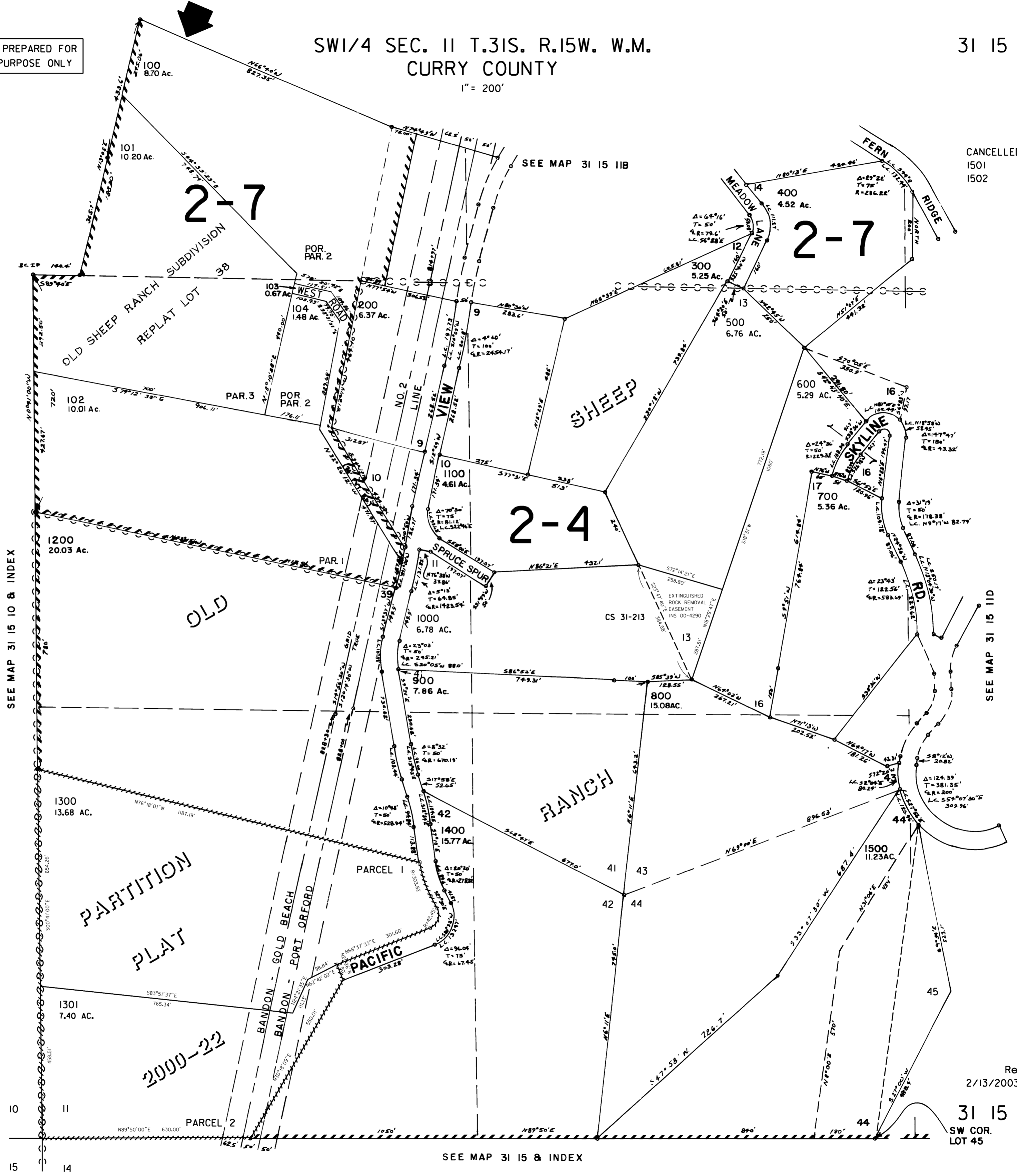
THIS MAP WAS PREPARED FOR ASSESSMENT PURPOSE ONLY

SW1/4 SEC. II T.31S. R.15W. W.M.
CURRY COUNTY

1" = 200'

31 15 11C

CANCELLED NO.
1501
1502



SEE MAP 31 15 10 & INDEX

SEE MAP 31 15 11D

SEE MAP 31 15 & INDEX

Revised
2/13/2003, DBJ

31 15 11C

SW COR.
LOT 45