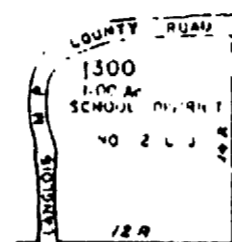


1" = 2000'

IN SECTION 31

1. S. 10° 15' E., 430'
2. S. 1° 30' E., 284'
3. S. 12° 50' E., 200'
4. S. 69° 20' E., 103'
5. N. 82° 30' E., 193'
6. S. 55° 30' E., 351'
7. S. 64° 30' E., 280'
8. N. 87° 40' E., 535'
9. N. 58° 30' E., 165'
10. N. 44° 35' E., 114'
11. N. 71° 0' E., 214'
12. N. 62° 40' E., 142'
13. N. 56° 10' E., 100'
14. S. 71° 40' E., 86'
15. N. 65° 40' E., 112'
16. N. 32° 15' E., 72'
17. N. 68° 05' E., 116'
18. N. 79° 50' E., 103'
19. N. 40° 54' E., 297'
20. N. 13° 44' E., 148'
21. N. 19° 56' E., 61'

IN SE 1/4 NW 1/4 SEC 28



1" = 200'

IN SECTION 32

1. S. 57° E., 2.50'
 2. N. 49° E., 3.50'
 3. S. 44° 30' E., 3.50'
 4. N. 64° E., 4.00'
 5. N. 32° 30' E., 2.00'
 6. N. 59° E., 3.20'
 7. NORTH 5.00'
 8. N. 4° E., 4.50'
 9. N. 59° E., 5.00'
 10. N. 54° E., 5.00'
 11. N. 35° 00' E., 8.00'
 12. N. 72° W., 7.00'
 13. N. 18° W., 1.50'
- IN SEC. 32
13. S. 18° E., 1.50'
 12. S. 72° E., 7.00'
 14. N. 70° E., 4.00'
 15. N. 81° E., 5.73'
 16. N. 37° E., 2.32'
 17. NORTH 0.40'

PARCEL 1501

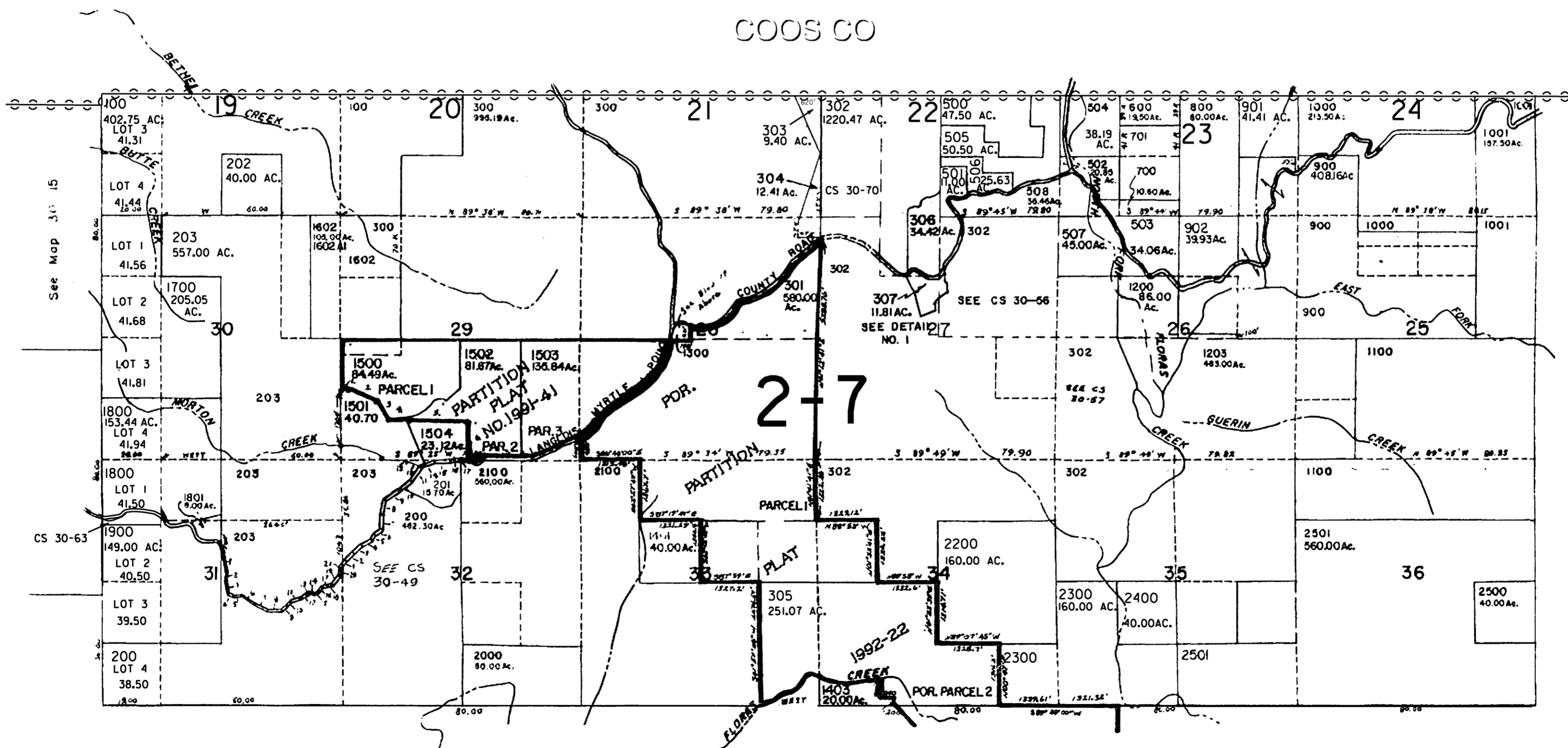
SEC 29

- | | | |
|---|-----------------|----------|
| 1 | S 88° 27' 26" E | 127.10' |
| 2 | S 66° 26' 35" E | 275.10' |
| 3 | S 34° 14' 48" E | 488.10' |
| 4 | N 37° 54' 28" E | 364.31' |
| 5 | S 88° 27' 26" E | 1323.72' |
| 6 | S 66° 26' 35" E | 850.00' |

CANCELLED NO.'S

- 400
- 500U1
- 500U2
- 503U1
- 503U2
- 505U1
- 505U2
- 506U1
- 506U2
- 700U1
- 700U2
- 1201
- 1202
- 1400
- 1402
- 1600
- 1601
- 1603
- 2101
- 250IU1
- 250IU2
- 2502

COOS CO



See Map 31 15

See Map 30 13

SEE MAP 31 14

THIS MAP WAS PREPARED FOR
ASSESSMENT PURPOSE ONLY

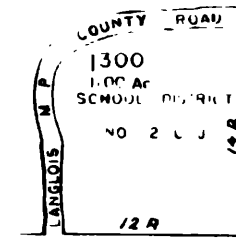
T.30S. R.14W. W.M.
CURRY COUNTY

1" = 2000'

IN SECTION 31

1. S 10° 15' E., 430'
2. S 1° 30' E., 284'
3. S 12° 50' E., 200'
4. S 69° 20' E., 103'
5. N 82° 30' E., 193'
6. S 55° 30' E., 351'
7. S 67° 30' E., 280'
8. N 87° 40' E., 335'
9. N 58° 30' E., 165'
10. N 44° 35' E., 114'
11. N 71° 0' E., 214'
12. N 62° 40' E., 142'
13. N 56° 10' E., 100'
14. S 71° 40' E., 86'
15. N 65° 40' E., 112'
16. N 32° 15' E., 72'
17. N 68° 05' E., 116'
18. N 79° 50' E., 103'
19. N 40° 50' E., 297'
20. N 13° 40' E., 148'
21. N 19° 56' E., 61'

IN SE 1/4 NW 1/4 SEC 28



1" = 200'

IN SECTION 32

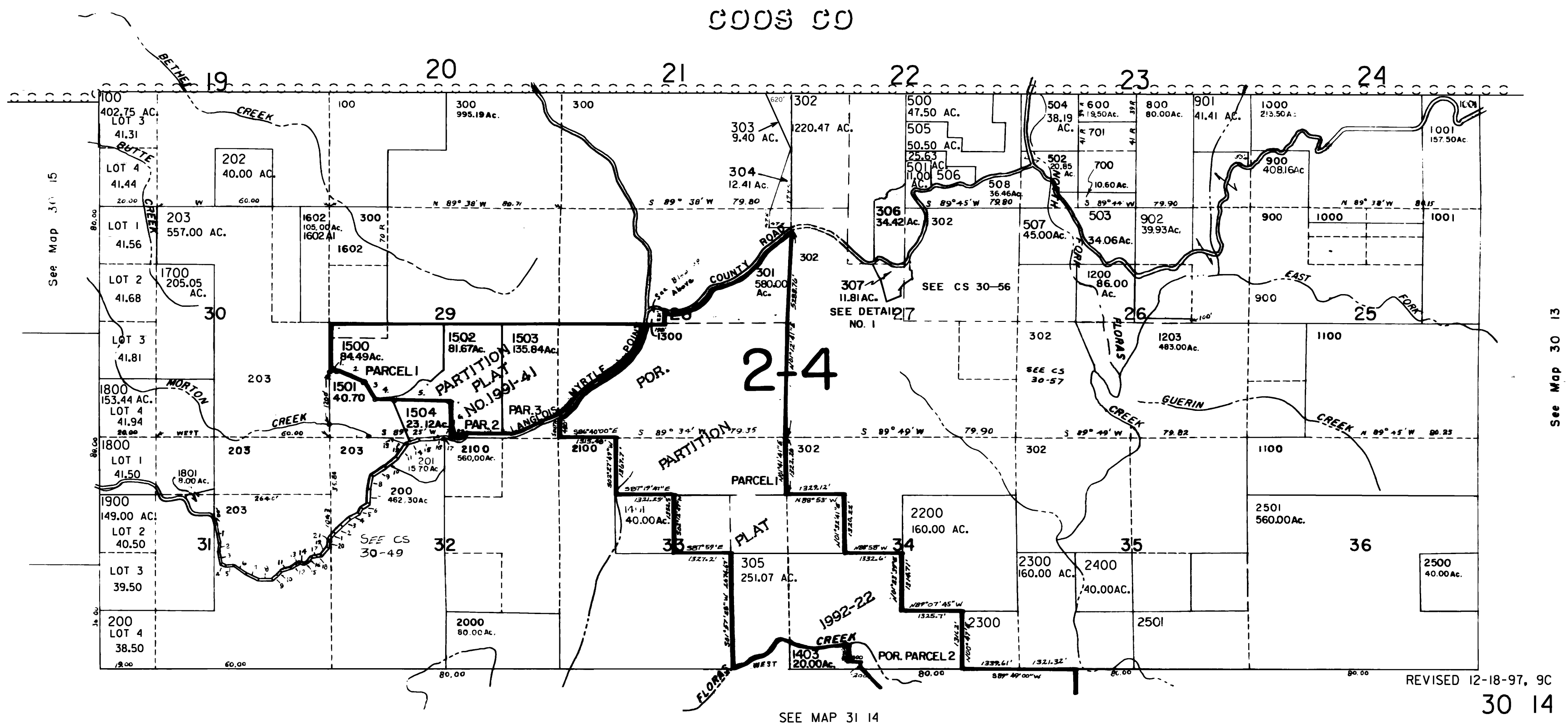
1. N 37° E., 2.50'
 2. N 49° E., 3.50'
 3. N 44° 30' E., 3.50'
 4. N 64° E., 4.00'
 5. N 32° 30' E., 2.00'
 6. N 59° E., 3.20'
 7. NORTH 5.00'
 8. N 4° E., 4.50'
 9. N 59° E., 5.00'
 10. N 54° E., 5.00'
 11. N 35° 00' E., 8.00'
 12. N 72° W., 7.00'
 13. N 18° W., 1.50'
- IN SEC. 32
13. S 18° E., 1.50'
 12. S 72° E., 7.00'
 14. N 70° E., 4.00'
 15. N 81° E., 5.75'
 16. N 37° E., 2.32'
 17. NORTH 0.40'

PARCEL 1501

- SEC 29
1. S 88° 27' 26" E 127.12'
 2. S 66° 26' 35" E 255.12'
 3. S 44° 14' 48" E 488.10'
 4. N 37° 54' 28" E 364.31'
 5. S 89° 29' E 1323.72'
 6. SOUTH 850.00'

CANCELLED NO'S

- 700U1
- 700U2
- 503U1
- 503U2
- 1601
- 1603
- 500U1
- 500U2
- 505U1
- 505U2
- 506U1
- 506U2
- 2501U1
- 2501U2
- 2502
- 1600
- 1400
- 2101
- 400
- 1201
- 1202
- 1402



See Map 30 15

See Map 30 13

SEE MAP 31 14

REVISED 12-18-97, 9C